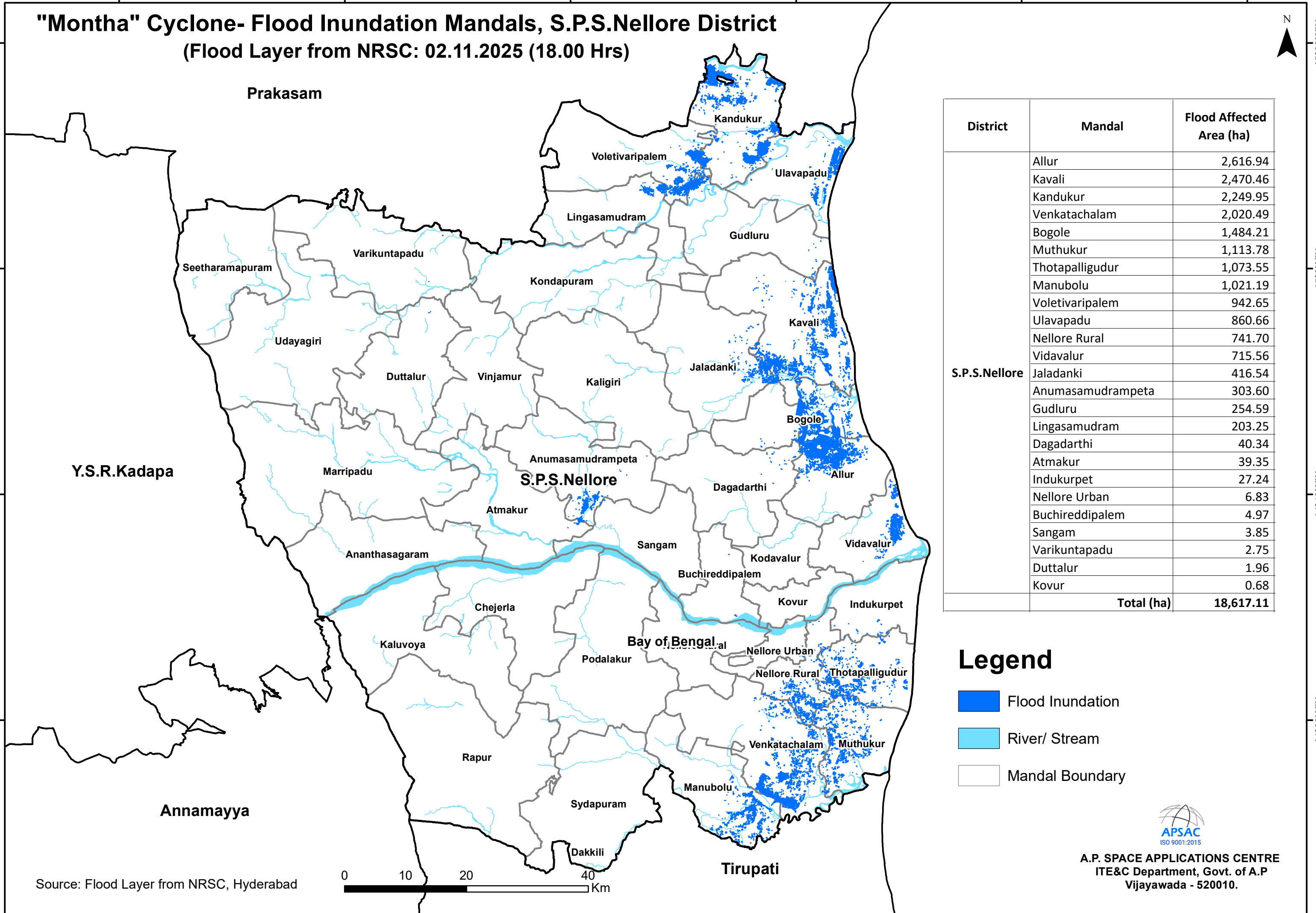


# "Montha" Cyclone- Flood Inundation Mandals, S.P.S.Nellore District

(Flood Layer from NRSC: 02.11.2025 (18.00 Hrs))



District	Mandal	Flood Affected Area (ha)
S.P.S.Nellore	Allur	2,616.94
	Kavali	2,470.46
	Kandukur	2,249.95
	Venkatachalam	2,020.49
	Bogole	1,484.21
	Muthukur	1,113.78
	Thotapalligudur	1,073.55
	Manubolu	1,021.19
	Voletivaripalem	942.65
	Ulavapadu	860.66
	Nellore Rural	741.70
	Vidavalur	715.56
	Jaladanki	416.54
	Anumasamudrampeta	303.60
	Gudluru	254.59
	Lingasamudram	203.25
	Dagadarthi	40.34
	Atmakur	39.35
	Indukurpet	27.24
	Nellore Urban	6.83
	Buchireddipalem	4.97
	Sangam	3.85
	Varikuntapadu	2.75
	Duttalur	1.96
	Kovur	0.68
<b>Total (ha)</b>		<b>18,617.11</b>

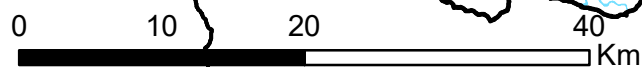
## Legend

- Flood Inundation
- River/ Stream
- Mandal Boundary



A.P. SPACE APPLICATIONS CENTRE  
ITE&C Department, Govt. of A.P  
Vijayawada - 520010.

Source: Flood Layer from NRSC, Hyderabad



79°0'0"E 79°20'0"E 79°40'0"E 80°0'0"E 80°20'0"E 80°40'0"E

15°20'0"N 15°0'0"N 14°40'0"N 14°20'0"N

15°20'0"N 15°0'0"N 14°40'0"N 14°20'0"N