

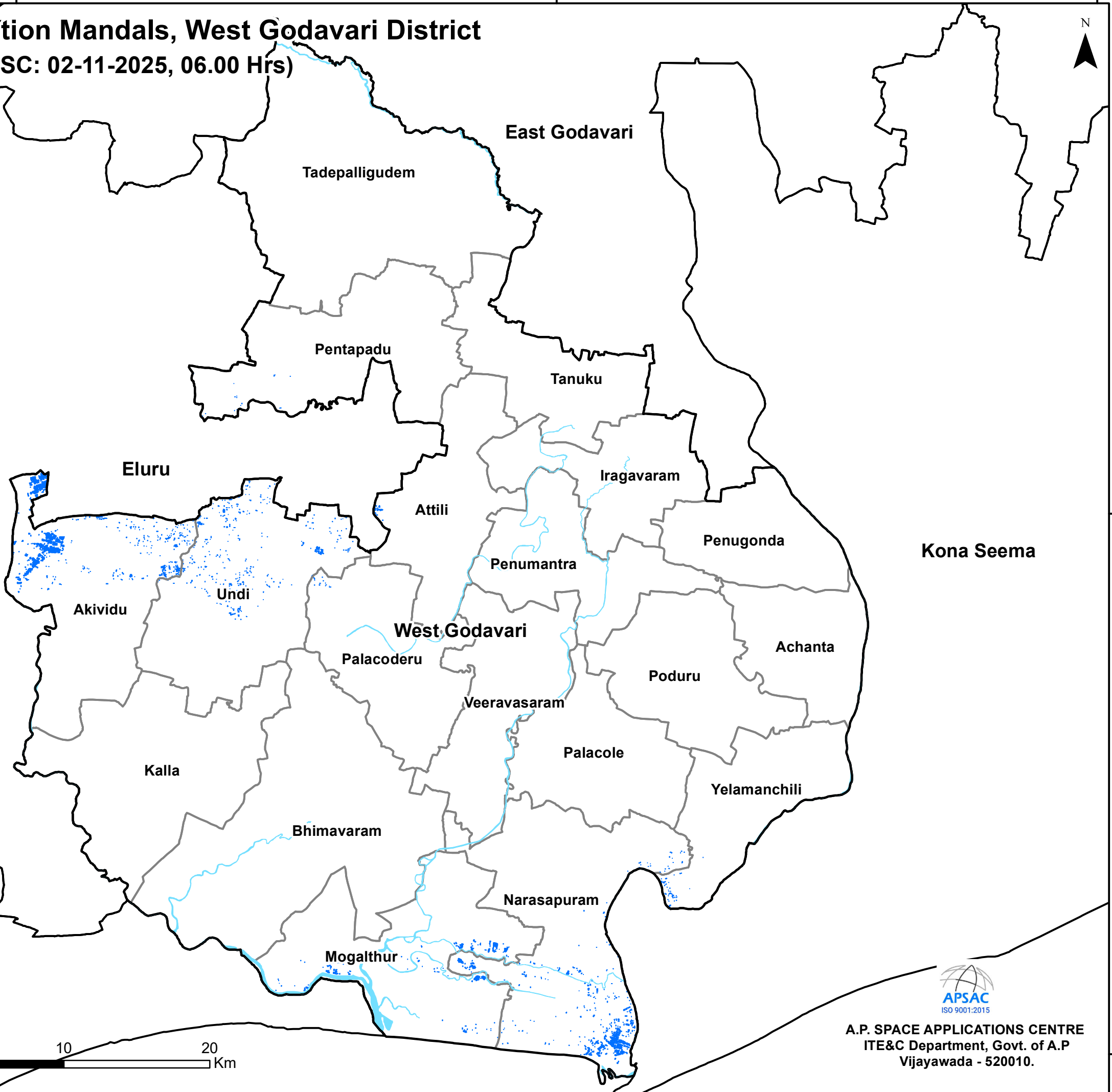
# "Montha" Cyclone- Flood Inundation Mandals, West Godavari District

(Flood Layer from NRSC: 02-11-2025, 06.00 Hrs)

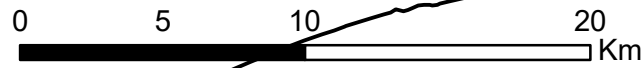
District	Mandal	Flood Affected Area (ha)
West Godavari	Akividu	296.49
	Narasapuram	173.37
	Undi	71.92
	Mogalthur	71.18
	Yelamanchili	10.39
	Attili	5.68
	Palacoderu	2.55
	Pentapadu	1.98
	<b>Total (ha)</b>	<b>633.57</b>

## Legend

-  Flood Inundation
-  River/ Stream
-  Mandal Boundary



Krishna



Source: Flood Layer from NRSC, Hyderabad



A.P. SPACE APPLICATIONS CENTRE  
ITE&C Department, Govt. of A.P  
Vijayawada - 520010.

82°0'0"E

81°40'0"E

81°20'0"E

16°40'0"N

16°40'0"N

16°20'0"N

16°20'0"N

82°0'0"E

81°40'0"E

81°20'0"E