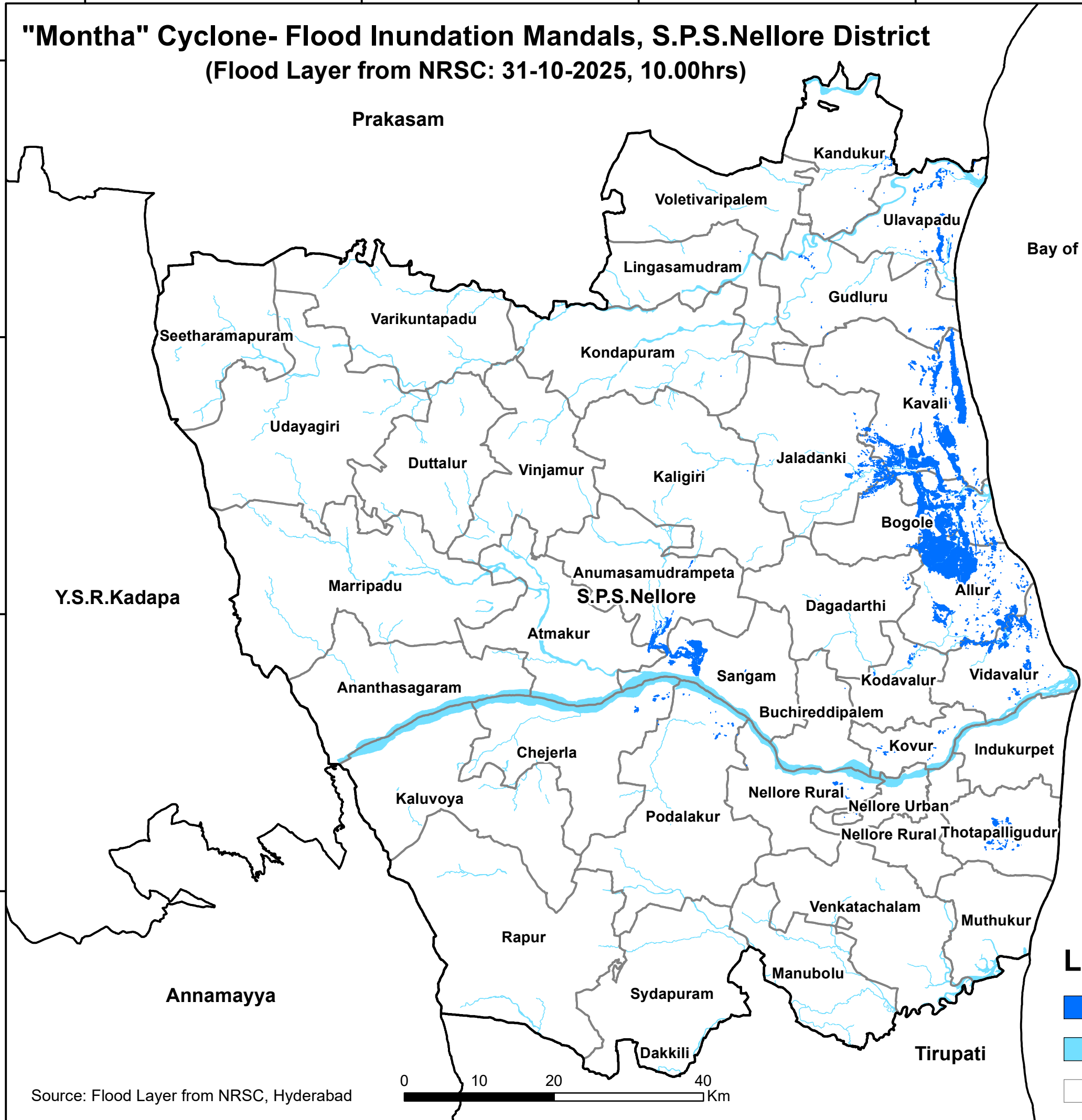


"Montha" Cyclone- Flood Inundation Mandals, S.P.S.Nellore District

(Flood Layer from NRSC: 31-10-2025, 10.00hrs)



District	Mandal	Flood Affected Area (ha)	
S.P.S.Nellore	Allur	3,631.34	
	Kavali	3,323.79	
	Bogole	2,386.94	
	Sangam	741.95	
	Vidavalur	655.13	
	Ulavapadu	438.72	
	Jaladanki	293.45	
	Anumasamudrampeta	267.28	
	Thotapalligudur	230.11	
	Gudluru	104.85	
	Kodavalur	65.40	
	Kovur	50.34	
	Chejerla	48.11	
	Atmakur	42.15	
	Nellore Rural	40.65	
	Podalakur	31.51	
	Dagadarthi	27.20	
	Kandukur	21.41	
	Kaligiri	2.18	
	Nellore Urban	1.92	
	Buchireddipalem	0.62	
	Kondapuram	0.50	
	Lingasamudram	0.50	
	Total (ha)		12,406.03

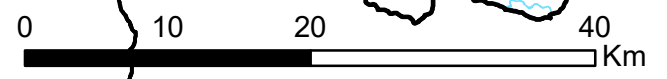
Legend

- Flood Inundation
- River/ Stream
- Mandal Boundary



A.P. SPACE APPLICATIONS CENTRE
ITE&C Department, Govt. of A.P
Vijayawada - 520010.

Source: Flood Layer from NRSC, Hyderabad



79°0'0"E 79°20'0"E 79°40'0"E 80°0'0"E 80°20'0"E 80°40'0"E

15°20'0"N 15°0'0"N 14°40'0"N 14°20'0"N

15°20'0"N 15°0'0"N 14°40'0"N 14°20'0"N