

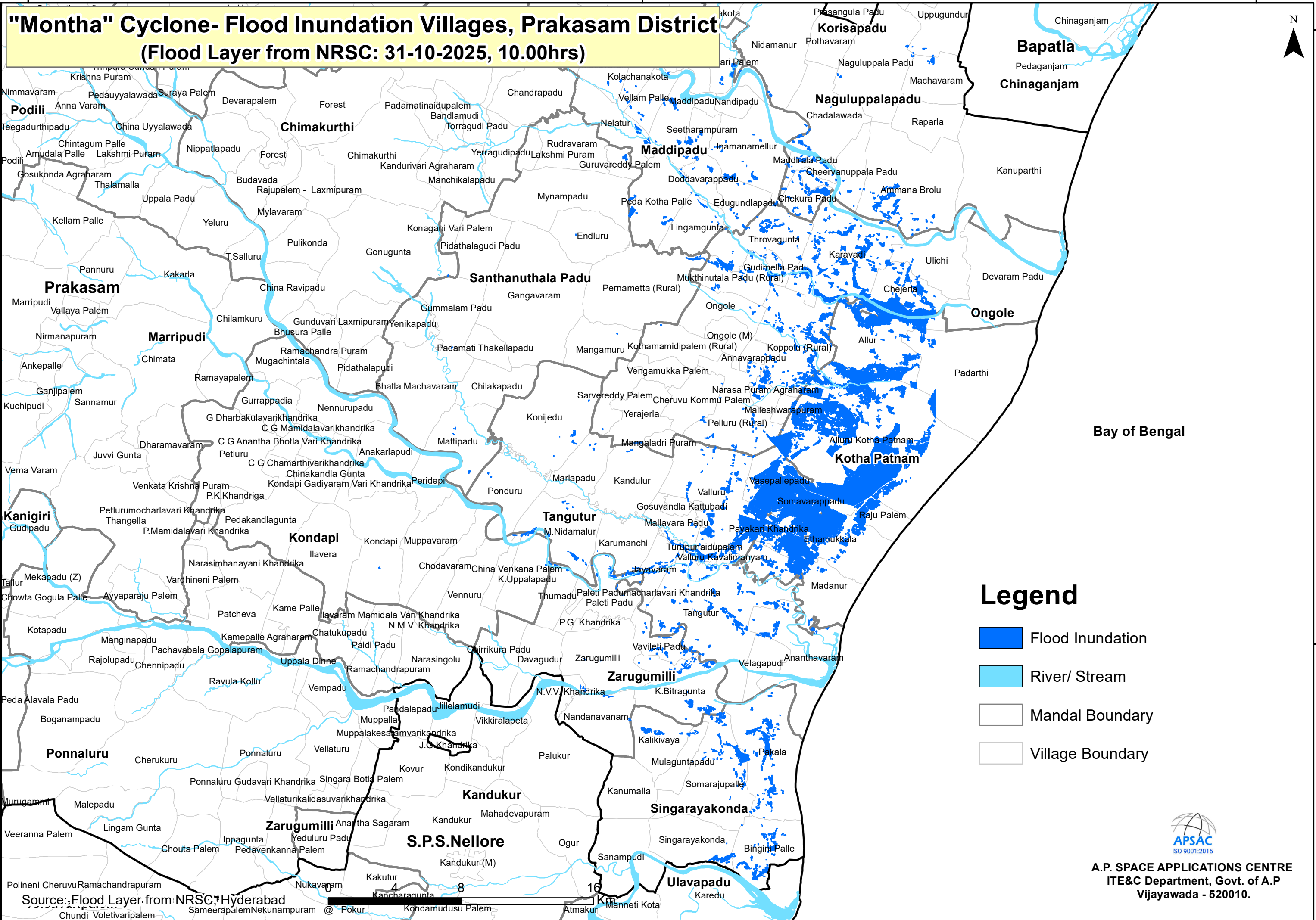
79°40'0"E

80°0'0"E

80°20'0"E

"Montha" Cyclone- Flood Inundation Villages, Prakasam District

(Flood Layer from NRSC: 31-10-2025, 10.00hrs)



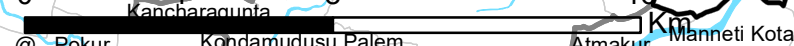
Legend

- Flood Inundation
- River/ Stream
- Mandal Boundary
- Village Boundary



A.P. SPACE APPLICATIONS CENTRE
 ITE&C Department, Govt. of A.P
 Vijayawada - 520010.

Source: Flood Layer from NRSC, Hyderabad



79°40'0"E

80°0'0"E

80°20'0"E

15°20'0"N

15°20'0"N

15°40'0"N

15°40'0"N