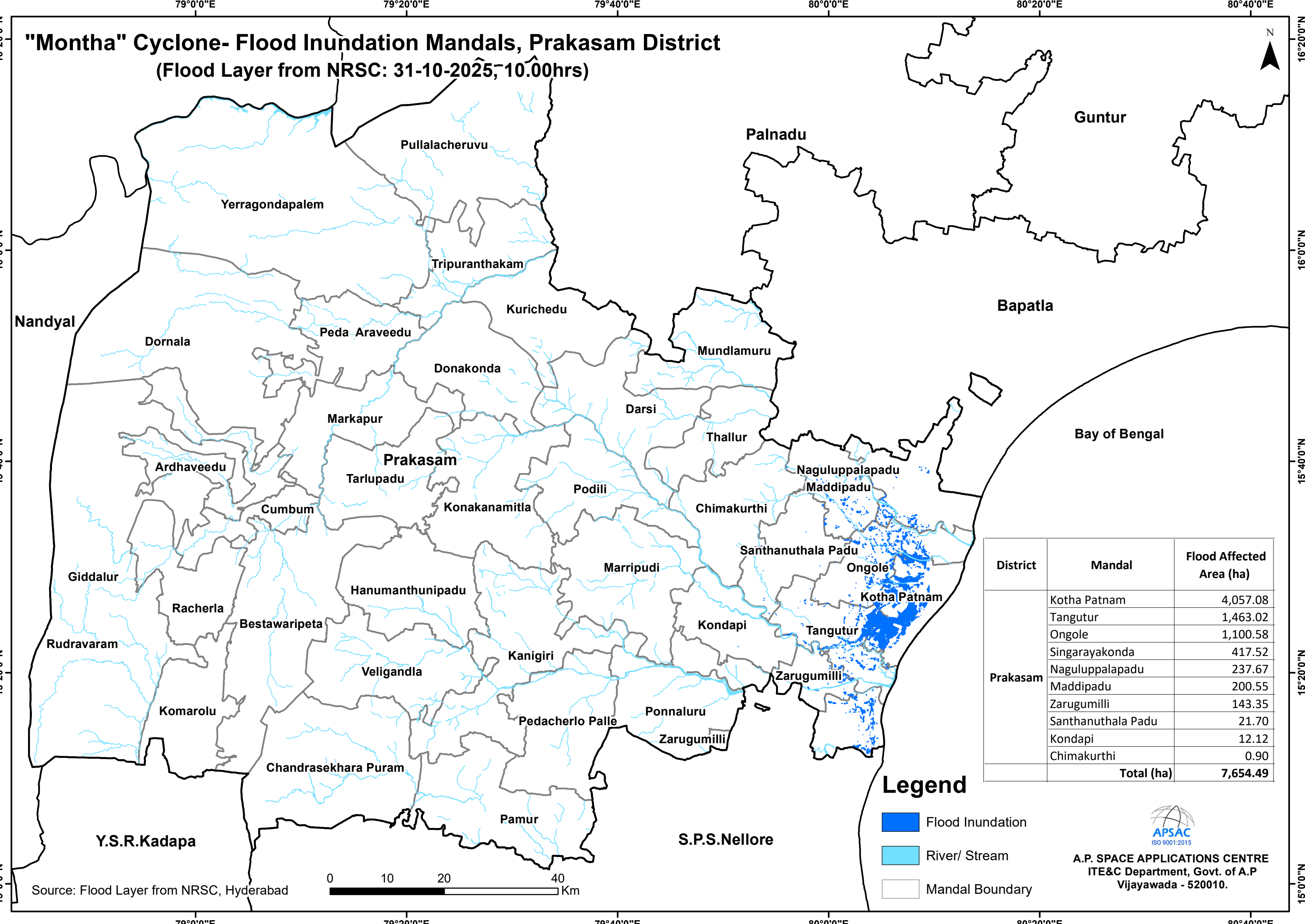


"Montha" Cyclone- Flood Inundation Mandals, Prakasam District (Flood Layer from NRSC: 31-10-2025, 10.00hrs)



District	Mandal	Flood Affected Area (ha)
Prakasam	Kotha Patnam	4,057.08
	Tangutur	1,463.02
	Ongole	1,100.58
	Singarayakonda	417.52
	Naguluppalapadu	237.67
	Maddipadu	200.55
	Zarugumilli	143.35
	Santhanuthala Padu	21.70
	Kondapi	12.12
	Chimakurthi	0.90
	Total (ha)	7,654.49

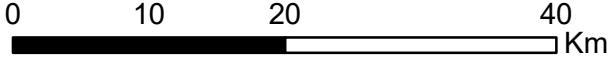
Legend

- Flood Inundation
- River/ Stream
- Mandal Boundary



A.P. SPACE APPLICATIONS CENTRE
ITE&C Department, Govt. of A.P
Vijayawada - 520010.

Source: Flood Layer from NRSC, Hyderabad



16°20'0"N
16°0'0"N
15°40'0"N
15°20'0"N
15°0'0"N

16°20'0"N
16°0'0"N
15°40'0"N
15°20'0"N
15°0'0"N

79°0'0"E 79°20'0"E 79°40'0"E 80°0'0"E 80°20'0"E 80°40'0"E

79°0'0"E 79°20'0"E 79°40'0"E 80°0'0"E 80°20'0"E 80°40'0"E