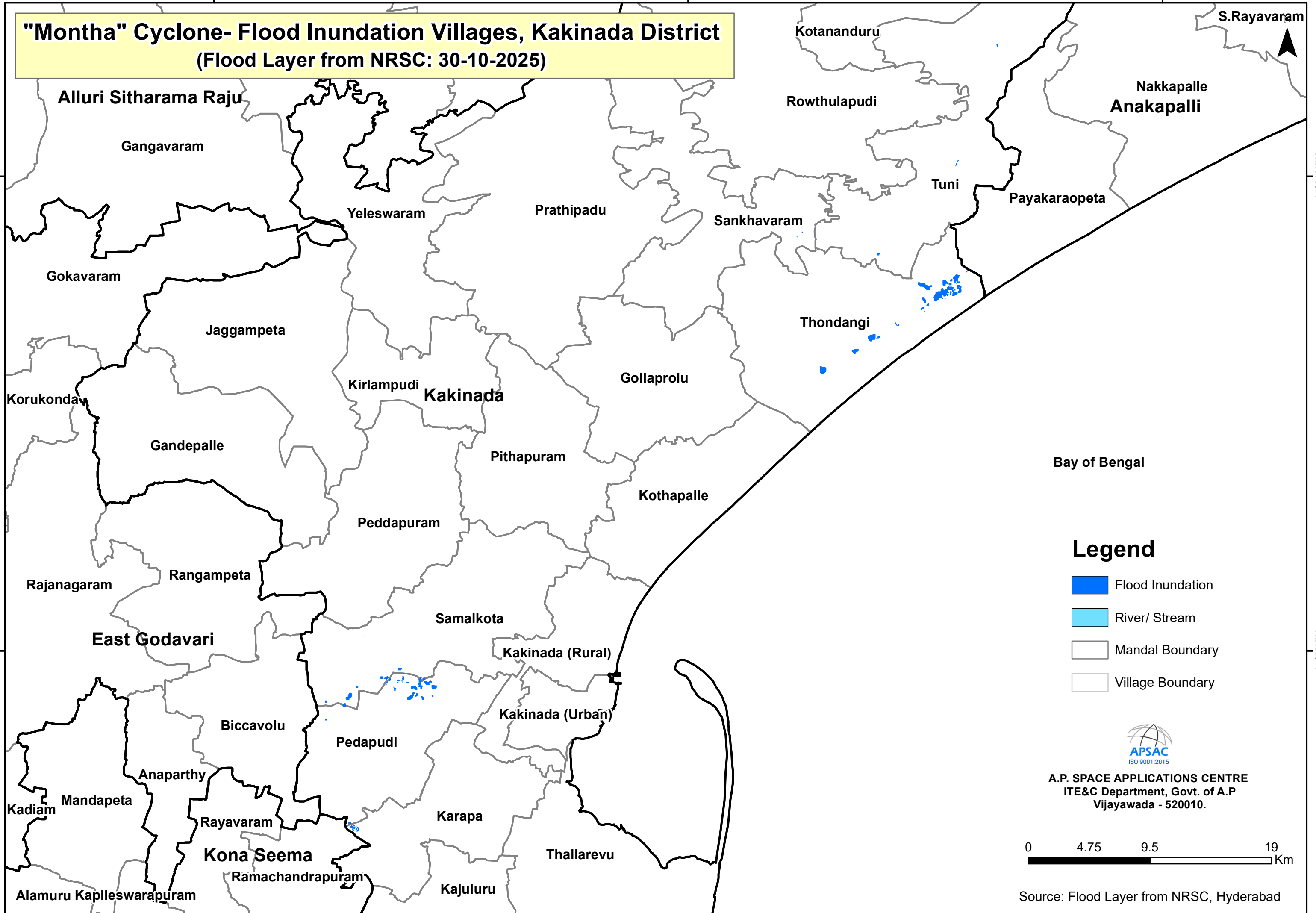


"Montha" Cyclone- Flood Inundation Villages, Kakinada District
 (Flood Layer from NRSC: 30-10-2025)

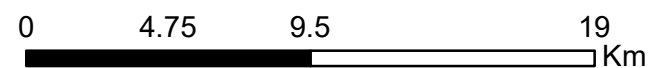


Legend

- Flood Inundation
- River/ Stream
- Mandal Boundary
- Village Boundary



A.P. SPACE APPLICATIONS CENTRE
 ITE&C Department, Govt. of A.P
 Vijayawada - 520010.



Source: Flood Layer from NRSC, Hyderabad

82°0'0"E 82°20'0"E 82°40'0"E

17°20'0"N 17°0'0"N

17°0'0"N 17°0'0"N

82°0'0"E 82°20'0"E 82°40'0"E