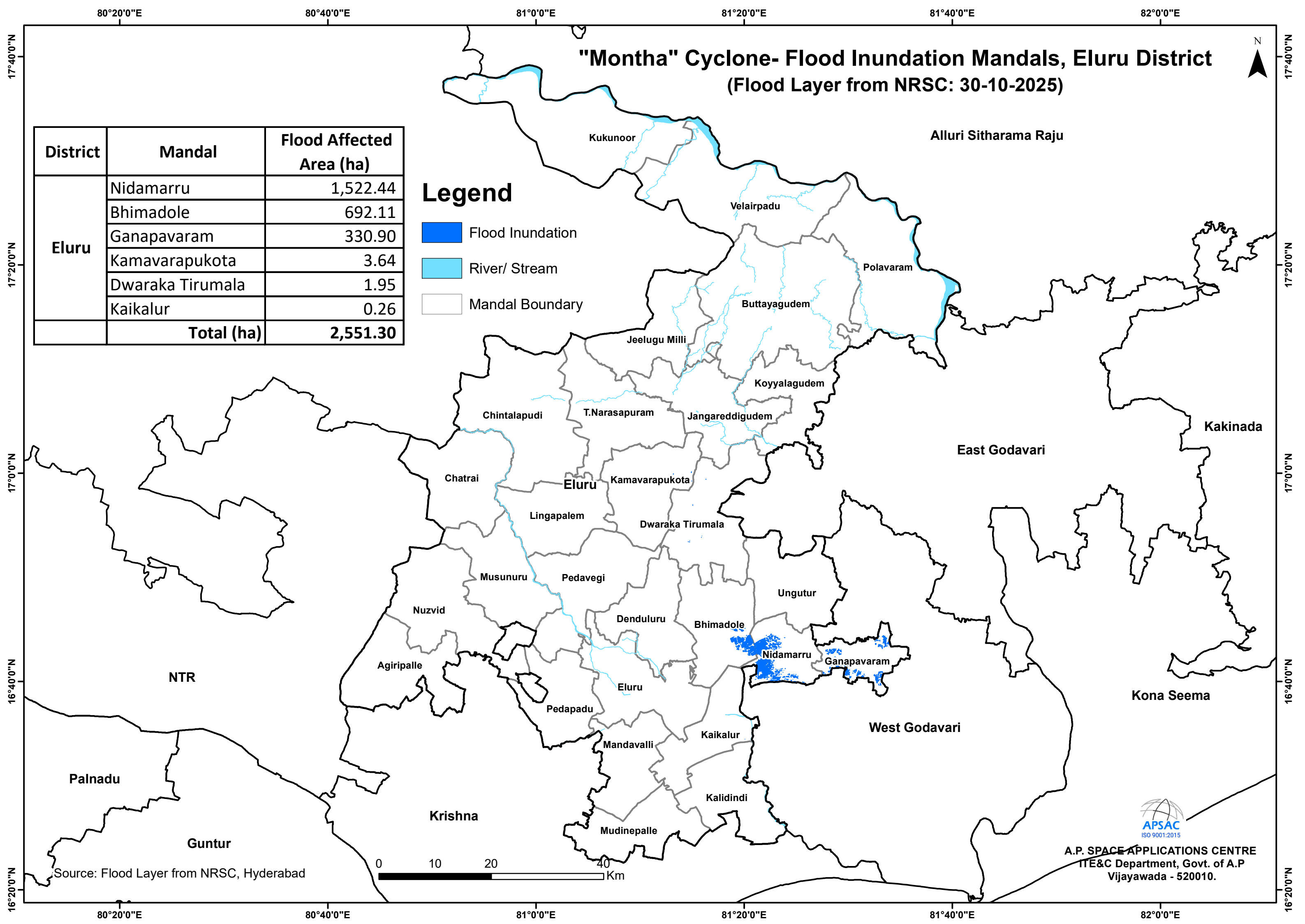


"Montha" Cyclone- Flood Inundation Mandals, Eluru District (Flood Layer from NRSC: 30-10-2025)

District	Mandal	Flood Affected Area (ha)
Eluru	Nidamarra	1,522.44
	Bhimadole	692.11
	Ganapavaram	330.90
	Kamavarapukota	3.64
	Dwaraka Tirumala	1.95
	Kaikalur	0.26
	Total (ha)	2,551.30

Legend

- Flood Inundation
- River/ Stream
- Mandal Boundary



Source: Flood Layer from NRSC, Hyderabad



A.P. SPACE APPLICATIONS CENTRE
ITE&C Department, Govt. of A.P
Vijayawada - 520010.