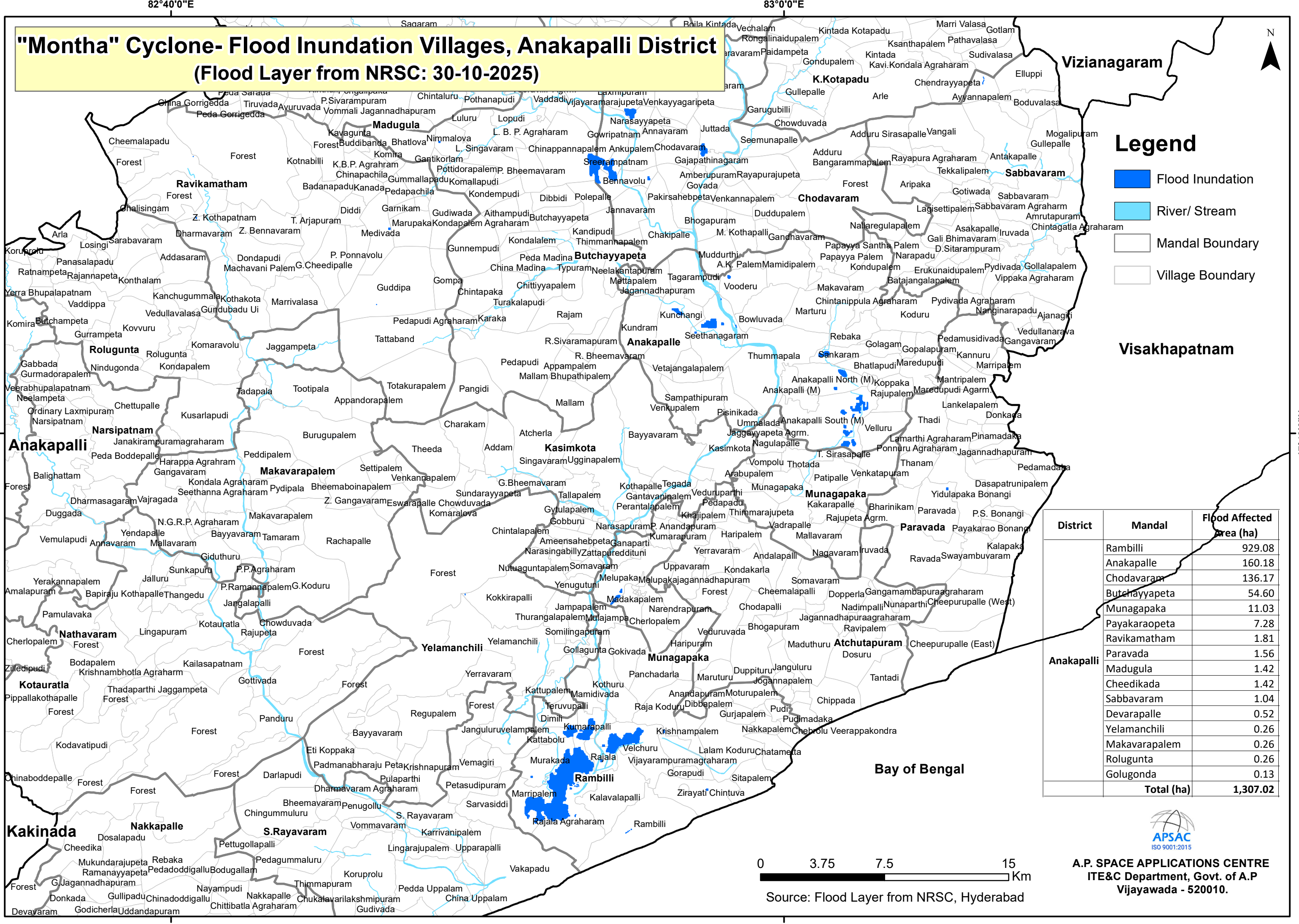


"Montha" Cyclone- Flood Inundation Villages, Anakapalli District (Flood Layer from NRSC: 30-10-2025)



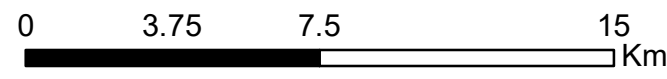
Legend

- Flood Inundation
- River/ Stream
- Mandal Boundary
- Village Boundary

District	Mandal	Flood Affected Area (ha)
Anakapalli	Rambilli	929.08
	Anakapalle	160.18
	Chodavaram	136.17
	Butchayyapeta	54.60
	Munagapaka	11.03
	Payakaraopeta	7.28
	Ravikamatham	1.81
	Paravada	1.56
	Madugula	1.42
	Cheedikada	1.42
	Sabbavaram	1.04
	Devarapalle	0.52
	Yelamanchili	0.26
	Makavarapalem	0.26
	Rolugunta	0.26
Golugonda	0.13	
Total (ha)		1,307.02



A.P. SPACE APPLICATIONS CENTRE
ITE&C Department, Govt. of A.P
Vijayawada - 520010.



Source: Flood Layer from NRSC, Hyderabad