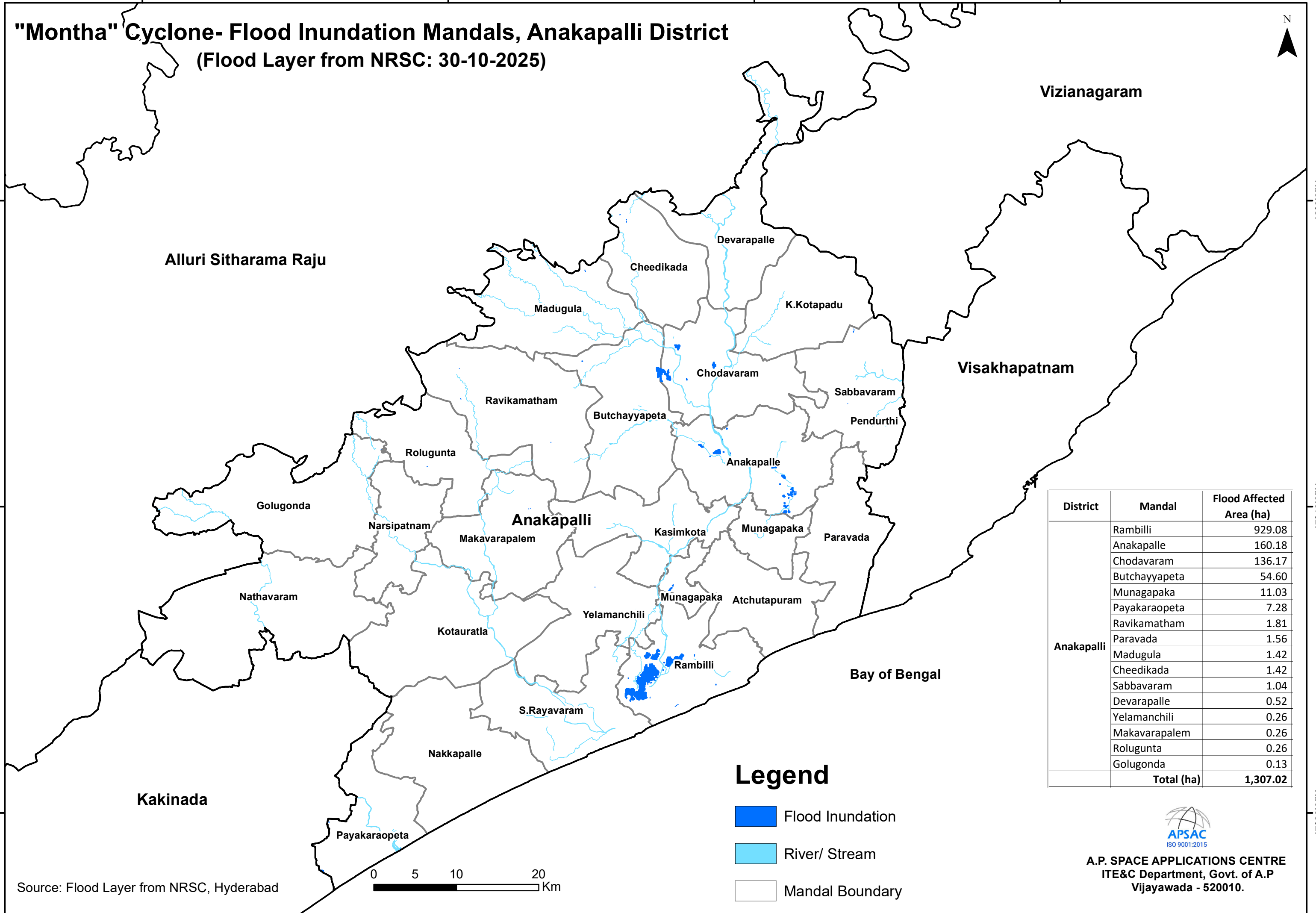


"Montha" Cyclone- Flood Inundation Mandals, Anakapalli District (Flood Layer from NRSC: 30-10-2025)

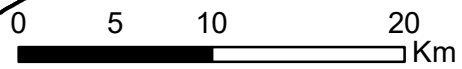


District	Mandal	Flood Affected Area (ha)
Anakapalli	Rambilli	929.08
	Anakapalle	160.18
	Chodavaram	136.17
	Butchayyapeta	54.60
	Munagapaka	11.03
	Payakaraopeta	7.28
	Ravikamatham	1.81
	Paravada	1.56
	Madugula	1.42
	Cheedikada	1.42
	Sabbavaram	1.04
	Devarapalle	0.52
	Yelamanchili	0.26
	Makavarapalem	0.26
	Rolugunta	0.26
Golugonda	0.13	
Total (ha)		1,307.02

Legend

- Flood Inundation
- River/ Stream
- Mandal Boundary

Source: Flood Layer from NRSC, Hyderabad



A.P. SPACE APPLICATIONS CENTRE
ITE&C Department, Govt. of A.P
Vijayawada - 520010.