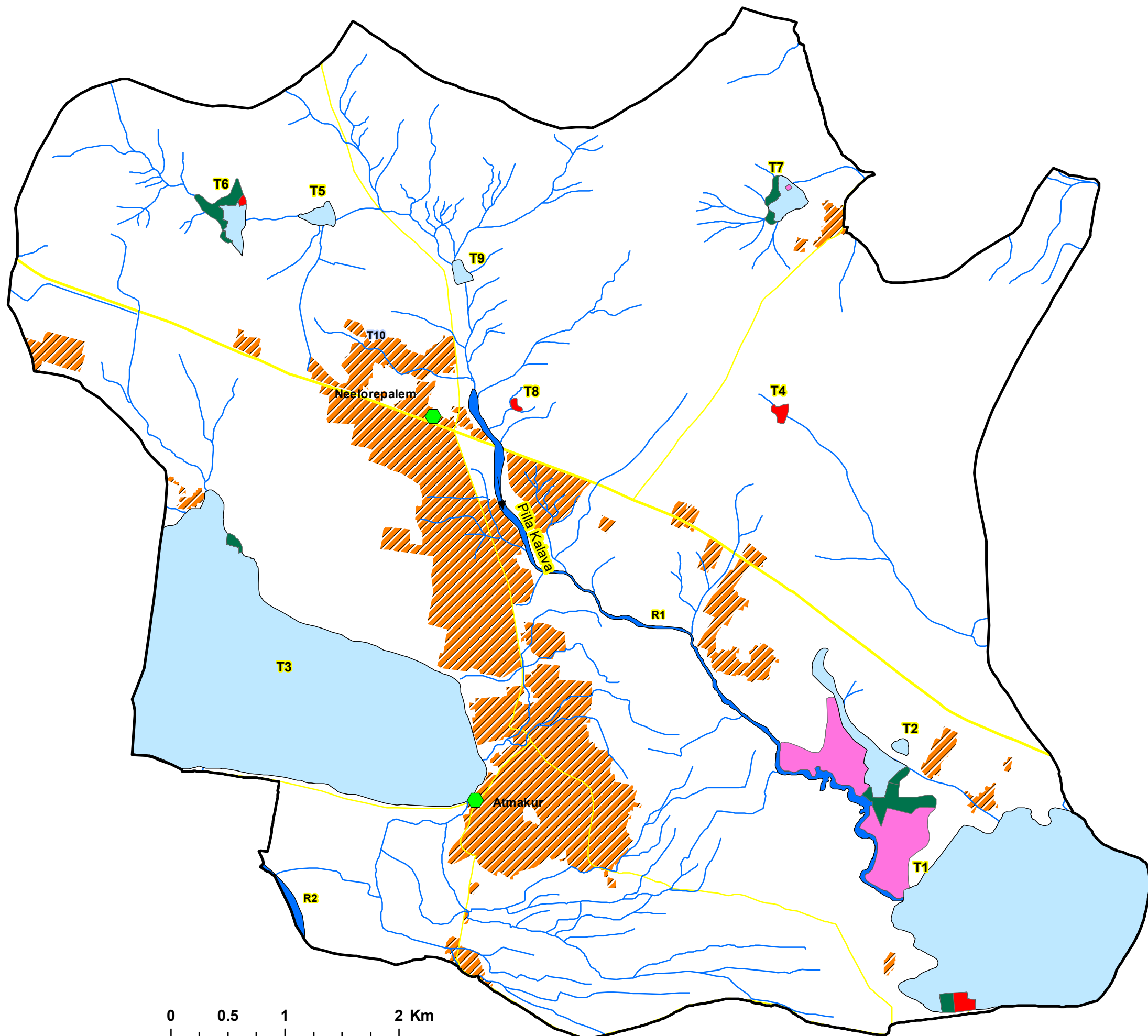


# Mapping of Urban Lakes / Rivers and it's Changes Atmakur Urban Local Body, SPS Nellore District, Andhra Pradesh



### Legend

- Habitation
- Drainage
- State Highway
- District Road
- Urban Local Body
- Settlement
- R1 River
- T1 Tank
- 2011 Change
- 2016 Change
- 2022 Change

### Source:

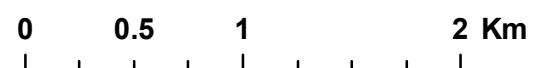
1. Urban Local Body Boundary provided by the Commissioner and Director of Municipal Administration, GoAP.

### Data used:

2. Tank / Lake / River / Reservoir / Drainage / Canal boundary digitized based on SoI Topo-sheet and Cartosat+LISS-IV Satellite Data (2.5 metres resolution) year 2011.
3. Changes of 2011 digitized based on Cartosat+LISS-IV Satellite Data (2.5 metres resolution - year 2011).
4. Changes of 2016 digitized based on Cartosat+LISS-IV Satellite Data (2.5 metres resolution - year 2016).
5. Changes of 2022 digitized based on Sentinel Satellite Data (10 metres resolution - Feb 2022).

Note: This map and contents required to be ground-truth and vetted by the Collector and District Magistrate, SPS Nellore District and the Departments.

Sl.No.	Waterbody Name (Refer Map)	Total Waterbody	2011	2016	2022	Remaining Waterbody
			Changes	Changes	Changes	
Area in Acre(s) (AC)						
1	River (R1)	66.48	0.00	0.00	0.00	66.48
2	River (R2)	9.12	0.00	0.00	0.00	9.12
3	Tank (T1)	905.48	133.58	28.65	6.25	737.00
4	Tank (T2)	3.68	0.00	0.00	0.00	3.68
5	Tank (T3)	1089.47	0.00	2.76	0.00	1086.70
6	Tank (T4)	4.05	0.00	0.00	4.05	0.00
7	Tank (T5)	9.61	0.00	0.00	0.00	9.61
8	Tank (T6)	30.29	0.00	14.52	1.09	14.68
9	Tank (T7)	22.91	0.39	5.75	0.00	16.77
10	Tank (T8)	1.72	0.00	0.00	1.72	0.00
11	Tank (T9)	5.94	0.00	0.00	0.00	5.94
<b>Grand Total</b>		<b>2148.73</b>	<b>133.96</b>	<b>51.69</b>	<b>13.10</b>	<b>1949.98</b>



Prepared By



Andhra Pradesh Space Applications Centre  
ITE & C Department, Govt., of A.P.  
Vijayawada - 520010

14°40'0"N

14°40'0"N

14°38'0"N

14°38'0"N

14°36'0"N

14°36'0"N

79°36'0"E

79°38'0"E

79°40'0"E

79°42'0"E

79°36'0"E

79°38'0"E

79°40'0"E

79°42'0"E