

78°32'0"E







78°33'0"E

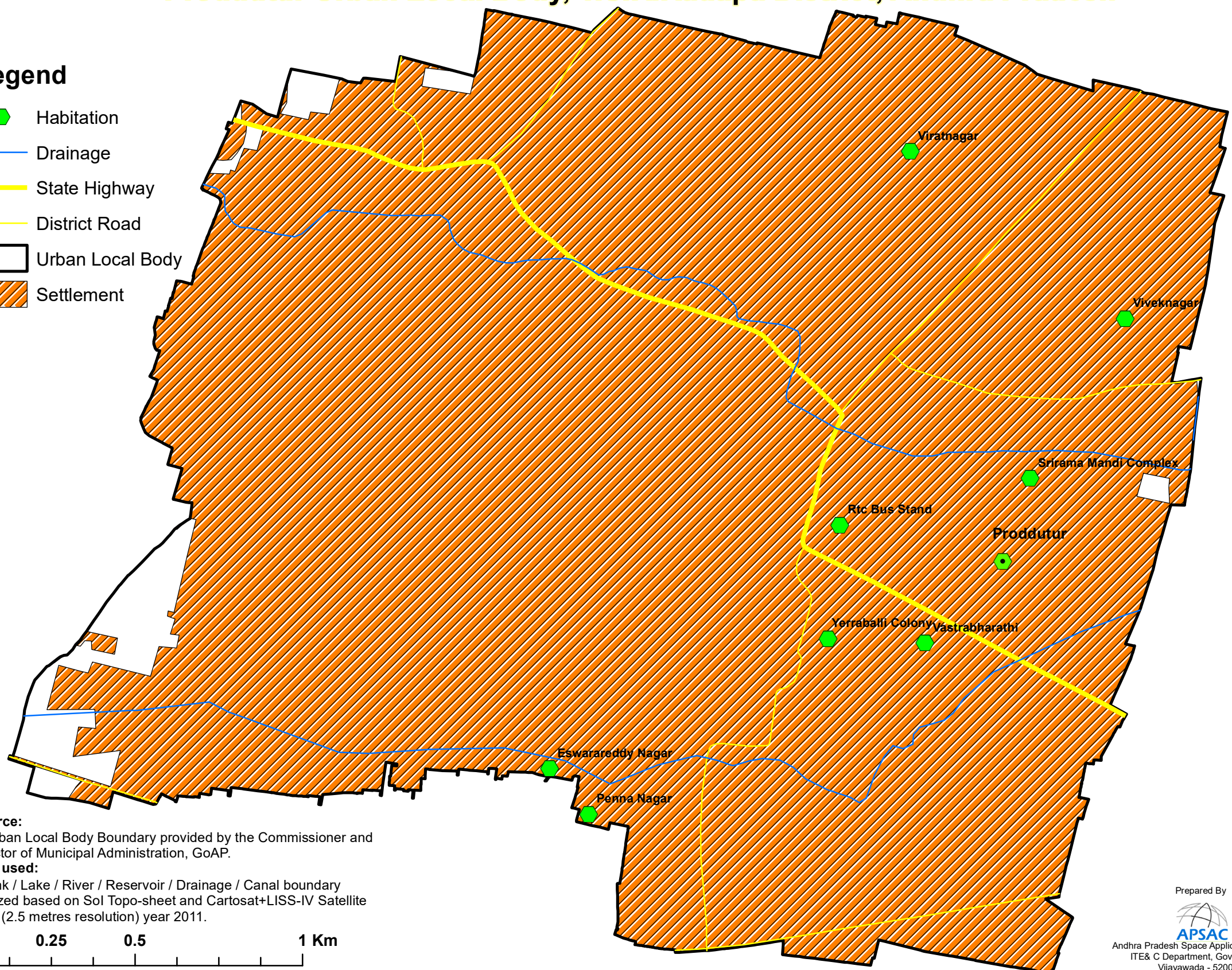
78°34'0"E

Mapping of Urban Tanks / Rivers and it's Encroachments Proddutur Urban Local Body, Y.S.R.Kadapa District, Andhra Pradesh

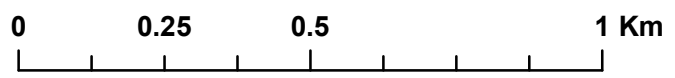


Legend

-  Habitation
-  Drainage
-  State Highway
-  District Road
-  Urban Local Body
-  Settlement



Source:
 1. Urban Local Body Boundary provided by the Commissioner and Director of Municipal Administration, GoAP.
Data used:
 2. Tank / Lake / River / Reservoir / Drainage / Canal boundary digitized based on Sol Topo-sheet and Cartosat+LISS-IV Satellite Data (2.5 metres resolution) year 2011.



Prepared By

 Andhra Pradesh Space Applications Centre
 ITE & C Department, Govt., of A.P.
 Vijayawada - 520010

78°32'0"E

78°33'0"E

78°34'0"E

14°45'0"N

14°45'0"N