

Mapping of Urban Tanks / Rivers and it's Encroachments Mydukur Urban Local Body, Y.S.R.Kadapa District, Andhra Pradesh



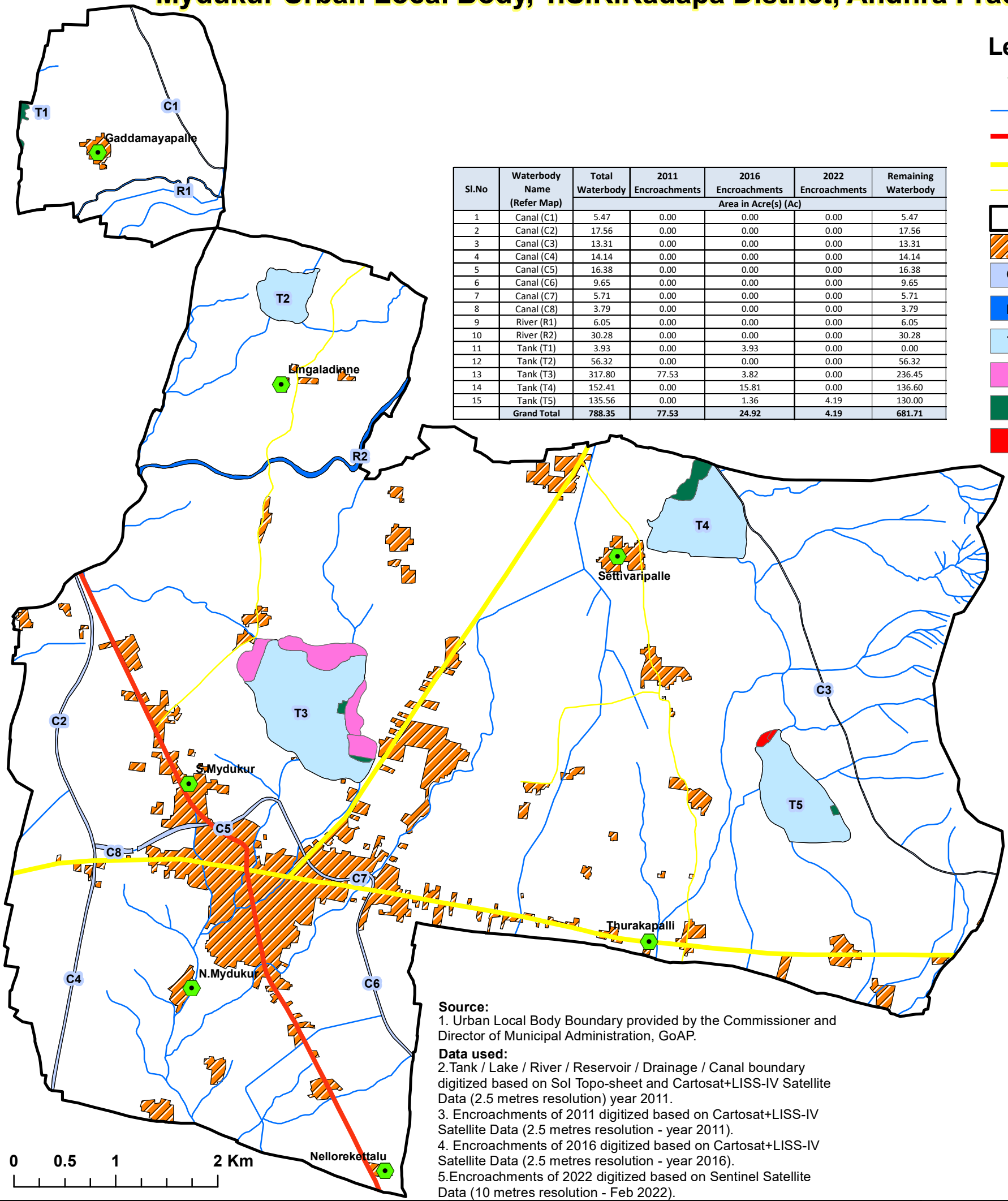
14°47'30"N
14°45'0"N
14°42'30"N

14°47'30"N
14°45'0"N
14°42'30"N

Legend

- Habitation
- Drainage
- National Highway
- State Highway
- District Road
- Urban Local Body
- Settlement
- Canal
- River
- Tank
- 2011 Encroachments
- 2016 Encroachments
- 2022 Encroachments

Sl.No	Waterbody Name (Refer Map)	Total Waterbody	2011 Encroachments	2016 Encroachments	2022 Encroachments	Remaining Waterbody
1	Canal (C1)	5.47	0.00	0.00	0.00	5.47
2	Canal (C2)	17.56	0.00	0.00	0.00	17.56
3	Canal (C3)	13.31	0.00	0.00	0.00	13.31
4	Canal (C4)	14.14	0.00	0.00	0.00	14.14
5	Canal (C5)	16.38	0.00	0.00	0.00	16.38
6	Canal (C6)	9.65	0.00	0.00	0.00	9.65
7	Canal (C7)	5.71	0.00	0.00	0.00	5.71
8	Canal (C8)	3.79	0.00	0.00	0.00	3.79
9	River (R1)	6.05	0.00	0.00	0.00	6.05
10	River (R2)	30.28	0.00	0.00	0.00	30.28
11	Tank (T1)	3.93	0.00	3.93	0.00	0.00
12	Tank (T2)	56.32	0.00	0.00	0.00	56.32
13	Tank (T3)	317.80	77.53	3.82	0.00	236.45
14	Tank (T4)	152.41	0.00	15.81	0.00	136.60
15	Tank (T5)	135.56	0.00	1.36	4.19	130.00
Grand Total		788.35	77.53	24.92	4.19	681.71



Source:
1. Urban Local Body Boundary provided by the Commissioner and Director of Municipal Administration, GoAP.

Data used:
2. Tank / Lake / River / Reservoir / Drainage / Canal boundary digitized based on Sol Topo-sheet and Cartosat+LISS-IV Satellite Data (2.5 metres resolution) year 2011.
3. Encroachments of 2011 digitized based on Cartosat+LISS-IV Satellite Data (2.5 metres resolution - year 2011).
4. Encroachments of 2016 digitized based on Cartosat+LISS-IV Satellite Data (2.5 metres resolution - year 2016).
5. Encroachments of 2022 digitized based on Sentinel Satellite Data (10 metres resolution - Feb 2022).

