

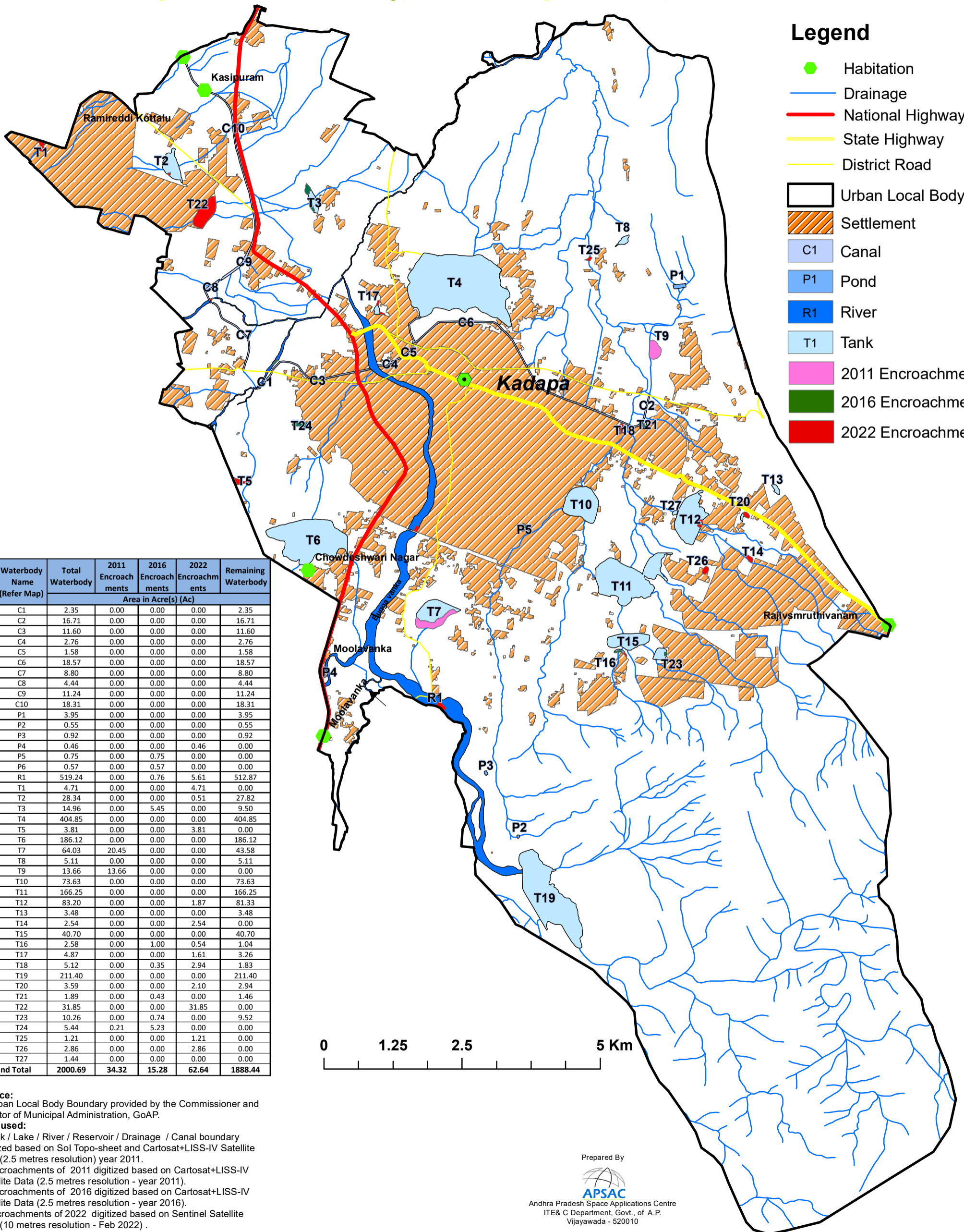
# Mapping of Urban Tanks / Rivers and it's Encroachments

## Kadapa Urban Local Body, Y.S.R Kadapa District, Andhra Pradesh

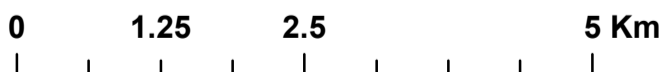


### Legend

- Habitation
- Drainage
- National Highway
- State Highway
- District Road
- Urban Local Body
- Settlement
- C1 Canal
- P1 Pond
- R1 River
- T1 Tank
- 2011 Encroachments
- 2016 Encroachments
- 2022 Encroachments



Sl.No	Waterbody Name (Refer Map)	Total Waterbody	Area in Acre(s) (Ac)			Remaining Waterbody
			2011 Encroachments	2016 Encroachments	2022 Encroachments	
1	C1	2.35	0.00	0.00	0.00	2.35
2	C2	16.71	0.00	0.00	0.00	16.71
3	C3	11.60	0.00	0.00	0.00	11.60
4	C4	2.76	0.00	0.00	0.00	2.76
5	C5	1.58	0.00	0.00	0.00	1.58
6	C6	18.57	0.00	0.00	0.00	18.57
7	C7	8.80	0.00	0.00	0.00	8.80
8	C8	4.44	0.00	0.00	0.00	4.44
9	C9	11.24	0.00	0.00	0.00	11.24
10	C10	18.31	0.00	0.00	0.00	18.31
11	P1	3.95	0.00	0.00	0.00	3.95
12	P2	0.55	0.00	0.00	0.00	0.55
13	P3	0.92	0.00	0.00	0.00	0.92
14	P4	0.46	0.00	0.00	0.46	0.00
15	P5	0.75	0.00	0.75	0.00	0.00
16	P6	0.57	0.00	0.57	0.00	0.00
17	R1	519.24	0.00	0.76	5.61	512.87
18	T1	4.71	0.00	0.00	4.71	0.00
19	T2	28.34	0.00	0.00	0.51	27.82
20	T3	14.96	0.00	5.45	0.00	9.50
21	T4	404.85	0.00	0.00	0.00	404.85
22	T5	3.81	0.00	0.00	3.81	0.00
23	T6	186.12	0.00	0.00	0.00	186.12
24	T7	64.03	20.45	0.00	0.00	43.58
25	T8	5.11	0.00	0.00	0.00	5.11
26	T9	13.66	13.66	0.00	0.00	0.00
27	T10	73.63	0.00	0.00	0.00	73.63
28	T11	166.25	0.00	0.00	0.00	166.25
29	T12	83.20	0.00	0.00	1.87	81.33
30	T13	3.48	0.00	0.00	0.00	3.48
31	T14	2.54	0.00	0.00	2.54	0.00
32	T15	40.70	0.00	0.00	0.00	40.70
33	T16	2.58	0.00	1.00	0.54	1.04
34	T17	4.87	0.00	0.00	1.61	3.26
35	T18	5.12	0.00	0.35	2.94	1.83
36	T19	211.40	0.00	0.00	0.00	211.40
37	T20	3.59	0.00	0.00	2.10	2.94
38	T21	1.89	0.00	0.43	0.00	1.46
39	T22	31.85	0.00	0.00	31.85	0.00
40	T23	10.26	0.00	0.74	0.00	9.52
41	T24	5.44	0.21	5.23	0.00	0.00
42	T25	1.21	0.00	0.00	1.21	0.00
43	T26	2.86	0.00	0.00	2.86	0.00
44	T27	1.44	0.00	0.00	0.00	0.00
<b>Grand Total</b>		<b>2000.69</b>	<b>34.32</b>	<b>15.28</b>	<b>62.64</b>	<b>1888.44</b>



**Source:**  
 1. Urban Local Body Boundary provided by the Commissioner and Director of Municipal Administration, GoAP.  
**Data used:**  
 2. Tank / Lake / River / Reservoir / Drainage / Canal boundary digitized based on Sol Topo-sheet and Cartosat+LISS-IV Satellite Data (2.5 metres resolution) year 2011.  
 3. Encroachments of 2011 digitized based on Cartosat+LISS-IV Satellite Data (2.5 metres resolution - year 2011).  
 4. Encroachments of 2016 digitized based on Cartosat+LISS-IV Satellite Data (2.5 metres resolution - year 2016).  
 5. Encroachments of 2022 digitized based on Sentinel Satellite Data (10 metres resolution - Feb 2022) .

Prepared By  
  
**APSAC**  
 Andhra Pradesh Space Applications Centre  
 ITE & C Department, Govt., of A.P.  
 Vijayawada - 520010