

78°22'0"E

78°24'0"E

Mapping of Urban Tanks / Rivers and it's Encroachments Jammalamadugu Urban Local Body, Y.S.R.Kadapa District, Andhra Pradesh



Source:

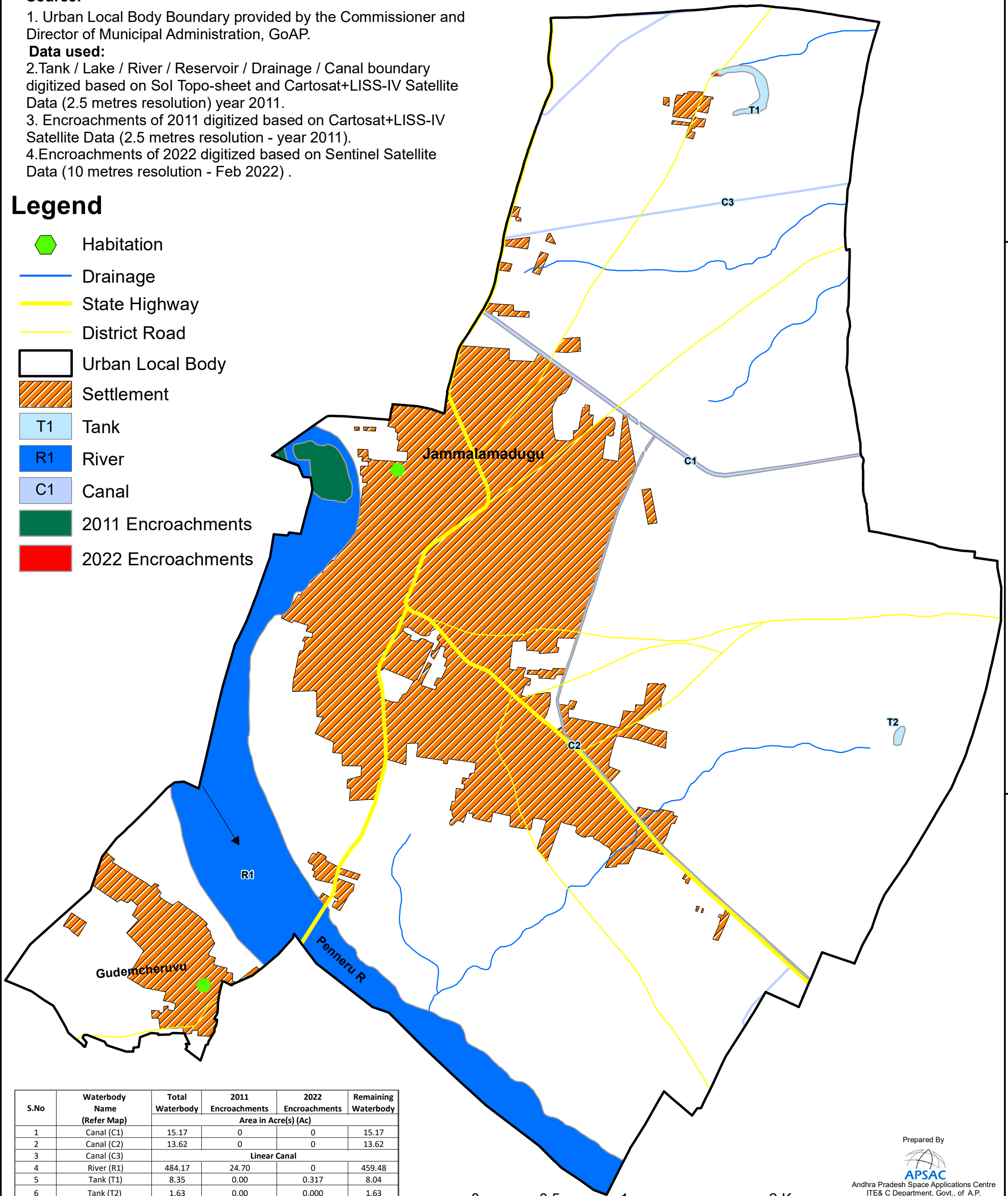
1. Urban Local Body Boundary provided by the Commissioner and Director of Municipal Administration, GoAP.

Data used:

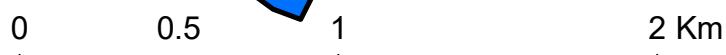
- 2. Tank / Lake / River / Reservoir / Drainage / Canal boundary digitized based on Sol Topo-sheet and Cartosat+LISS-IV Satellite Data (2.5 metres resolution) year 2011.
- 3. Encroachments of 2011 digitized based on Cartosat+LISS-IV Satellite Data (2.5 metres resolution - year 2011).
- 4. Encroachments of 2022 digitized based on Sentinel Satellite Data (10 metres resolution - Feb 2022) .

Legend

- Habitation
- Drainage
- State Highway
- District Road
- Urban Local Body
- Settlement
- T1 Tank
- R1 River
- C1 Canal
- 2011 Encroachments
- 2022 Encroachments



S.No	Waterbody Name (Refer Map)	Total Waterbody	2011	2022	Remaining Waterbody
			Encroachments	Encroachments	
Area in Acre(s) (Ac)					
1	Canal (C1)	15.17	0	0	15.17
2	Canal (C2)	13.62	0	0	13.62
3	Canal (C3)	Linear Canal			
4	River (R1)	484.17	24.70	0	459.48
5	Tank (T1)	8.35	0.00	0.317	8.04
6	Tank (T2)	1.63	0.00	0.000	1.63
Grand Total		522.95	24.70	0.317	497.94



78°22'0"E

78°24'0"E