

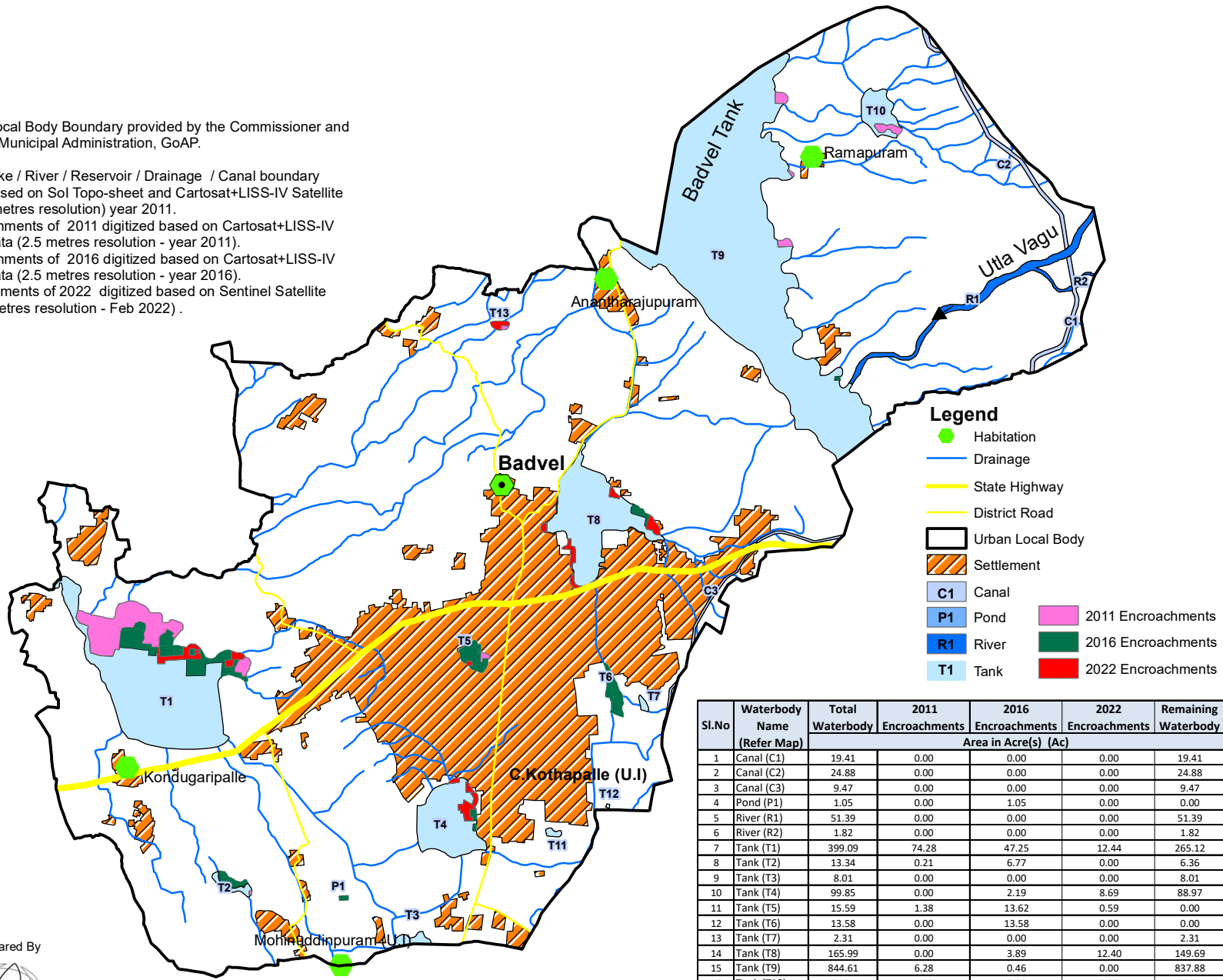
Mapping of Urban Tanks / Rivers and it's Encroachments Badvel Urban Local Body, Y.S.R.Kadapa District, Andhra Pradesh

Source:

1. Urban Local Body Boundary provided by the Commissioner and Director of Municipal Administration, GoAP.

Data used:

2. Tank / Lake / River / Reservoir / Drainage / Canal boundary digitized based on Sol Topo-sheet and Cartosat+LISS-IV Satellite Data (2.5 metres resolution) year 2011.
3. Encroachments of 2011 digitized based on Cartosat+LISS-IV Satellite Data (2.5 metres resolution - year 2011).
4. Encroachments of 2016 digitized based on Cartosat+LISS-IV Satellite Data (2.5 metres resolution - year 2016).
5. Encroachments of 2022 digitized based on Sentinel Satellite Data (10 metres resolution - Feb 2022) .



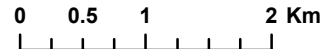
Legend

- Habitation
- Drainage
- State Highway
- District Road
- Urban Local Body
- Settlement
- C1 Canal
- P1 Pond
- R1 River
- T1 Tank
- 2011 Encroachments
- 2016 Encroachments
- 2022 Encroachments

Sl.No	Waterbody Name (Refer Map)	Total Waterbody	2011	2016	2022	Remaining Waterbody
			Encroachments	Encroachments	Encroachments	
Area in Acre(s) (Ac)						
1	Canal (C1)	19.41	0.00	0.00	0.00	19.41
2	Canal (C2)	24.88	0.00	0.00	0.00	24.88
3	Canal (C3)	9.47	0.00	0.00	0.00	9.47
4	Pond (P1)	1.05	0.00	1.05	0.00	0.00
5	River (R1)	51.39	0.00	0.00	0.00	51.39
6	River (R2)	1.82	0.00	0.00	0.00	1.82
7	Tank (T1)	399.09	74.28	47.25	12.44	265.12
8	Tank (T2)	13.34	0.21	6.77	0.00	6.36
9	Tank (T3)	8.01	0.00	0.00	0.00	8.01
10	Tank (T4)	99.85	0.00	2.19	8.69	88.97
11	Tank (T5)	15.59	1.38	13.62	0.59	0.00
12	Tank (T6)	13.58	0.00	13.58	0.00	0.00
13	Tank (T7)	2.31	0.00	0.00	0.00	2.31
14	Tank (T8)	165.99	0.00	3.89	12.40	149.69
15	Tank (T9)	844.61	6.28	0.46	0.00	837.88
16	Tank (T10)	34.25	4.29	0.00	0.00	29.95
17	Tank (T11)	2.51	0.00	0.00	0.00	2.51
18	Tank (T12)	0.38	0.00	0.00	0.00	0.38
19	Tank (T13)	3.50	0.62	0.00	2.88	0.00
Grand Total		1711.04	87.06	88.81	37.00	1498.17

Prepared By

 Andhra Pradesh Space Applications Centre
 ITE & C Department, Govt., of A.P.
 Vijayawada - 520010



14°47'30"N
14°45'0"N
14°42'30"N

14°47'30"N
14°45'0"N
14°42'30"N

79°2'30"E

79°5'0"E

79°7'30"E