









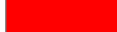


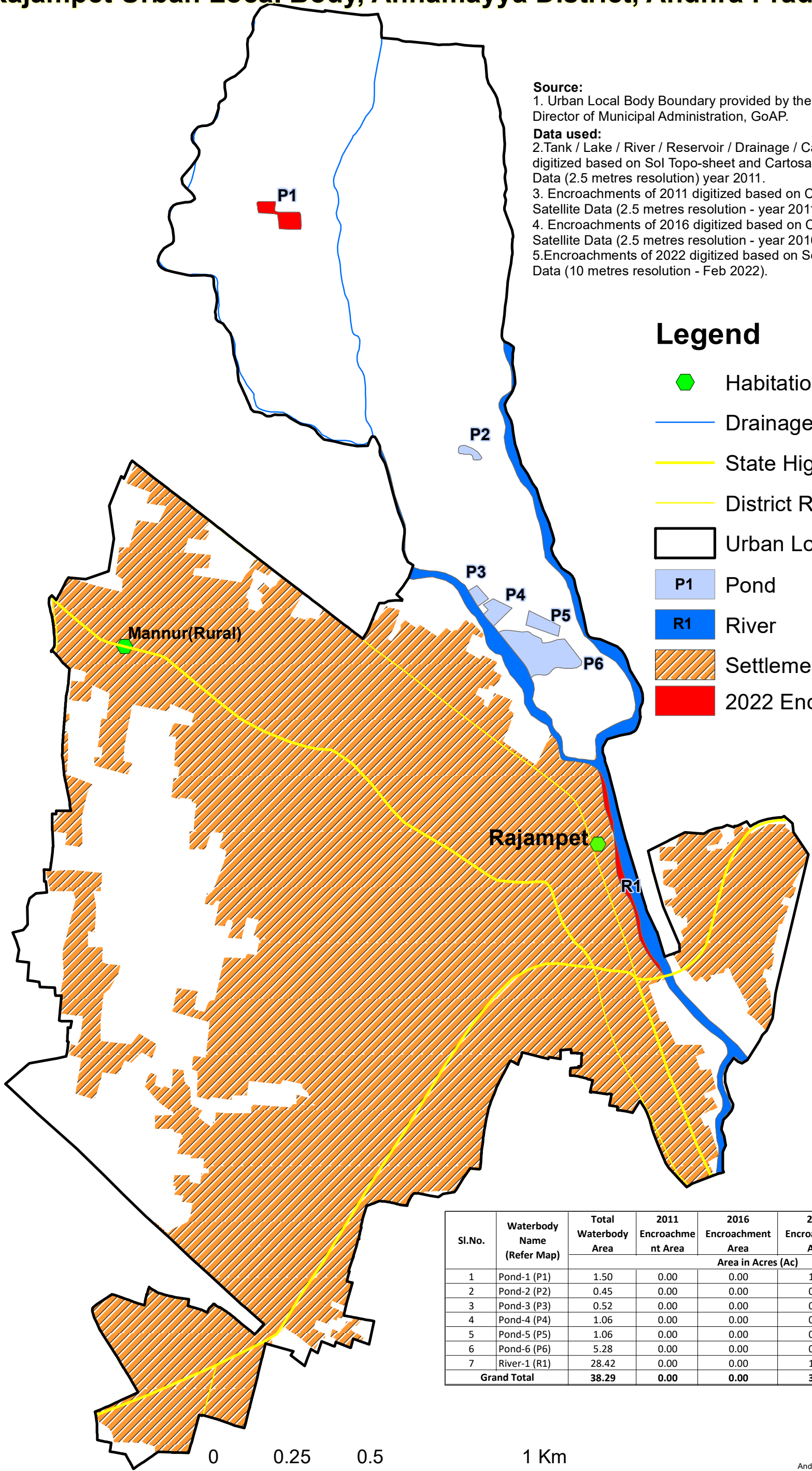
Mapping of Urban Tanks/ Rivers and its Encroachments Rajampet Urban Local Body, Annamayya District, Andhra Pradesh

Source:
1. Urban Local Body Boundary provided by the Commissioner and Director of Municipal Administration, GoAP.

Data used:
2. Tank / Lake / River / Reservoir / Drainage / Canal boundary digitized based on Sol Topo-sheet and Cartosat+LISS-IV Satellite Data (2.5 metres resolution) year 2011.
3. Encroachments of 2011 digitized based on Cartosat+LISS-IV Satellite Data (2.5 metres resolution - year 2011).
4. Encroachments of 2016 digitized based on Cartosat+LISS-IV Satellite Data (2.5 metres resolution - year 2016).
5. Encroachments of 2022 digitized based on Sentinel Satellite Data (10 metres resolution - Feb 2022).

Legend

-  Habitation
-  Drainage
-  State Highway
-  District Road
-  Urban Local Body
-  P1 Pond
-  R1 River
-  Settlement
-  2022 Encroachment



Sl.No.	Waterbody Name (Refer Map)	Total Waterbody Area	2011 Encroachment Area	2016 Encroachment Area	2022 Encroachment Area	Remaining Waterbody Area
1	Pond-1 (P1)	1.50	0.00	0.00	1.50	0.00
2	Pond-2 (P2)	0.45	0.00	0.00	0.00	0.45
3	Pond-3 (P3)	0.52	0.00	0.00	0.00	0.52
4	Pond-4 (P4)	1.06	0.00	0.00	0.00	1.06
5	Pond-5 (P5)	1.06	0.00	0.00	0.00	1.06
6	Pond-6 (P6)	5.28	0.00	0.00	0.00	5.28
7	River-1 (R1)	28.42	0.00	0.00	1.88	26.54
Grand Total		38.29	0.00	0.00	3.38	34.91

