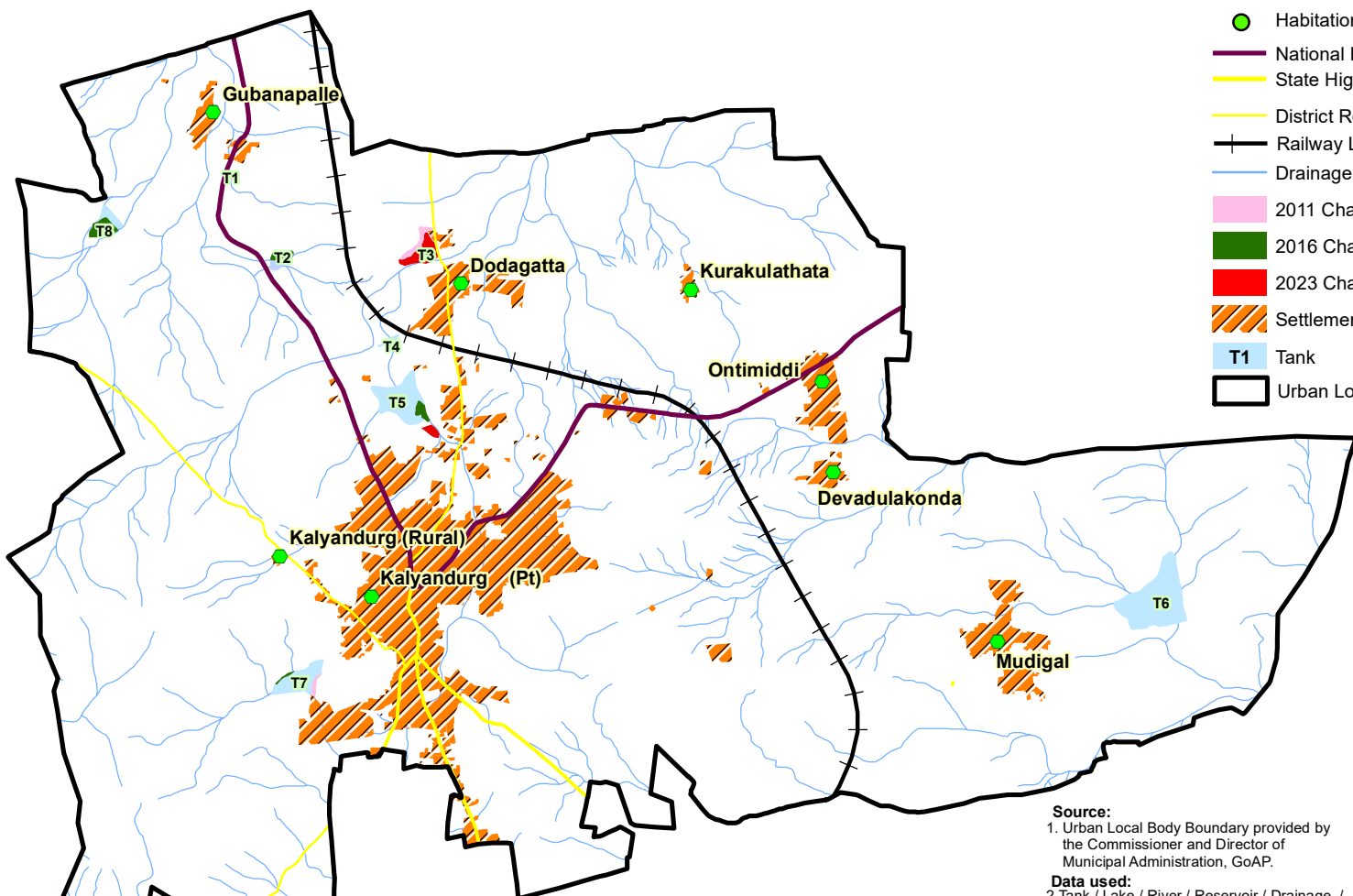


Mapping of Urban Tanks / Rivers and it's Changes Kalyandurg Urban Local Body, Anantapuramu District, Andhra Pradesh



Legend

- Habitation
- National Highway
- State Highway
- District Road
- Railway Line
- Drainage
- 2011 Change
- 2016 Change
- 2023 Change
- Settlement
- T1 Tank
- Urban Local Body



- Source:**
- Urban Local Body Boundary provided by the Commissioner and Director of Municipal Administration, GoAP.
- Data used:**
- Tank / Lake / River / Reservoir / Drainage / Canal boundary digitized based on Sol Topo-sheet and Cartosat+LISS-IV Satellite Data (2.5 metres resolution) year 2011.
 - Changes of 2011 digitized based on Cartosat+LISS-IV Satellite Data (2.5 metres resolution - year 2011).
 - Changes of 2016 digitized based on Cartosat+LISS-IV Satellite Data (2.5 metres resolution - year 2016).
 - Changes of 2023 digitized based on Sentinel Satellite Data (10 metres resolution - June 2023).

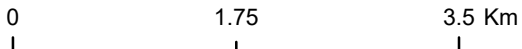
S.No	Waterbody Name (Refer Map)	Total Waterbody	2011	2016	2023	Remaining Waterbody
			Change	Change	Change	
Area in Acre(s)(AC)						
1	Tank (T1)	1.30	1.30	0.00	0.00	0.00
2	Tank (T2)	6.11	0.00	3.75	0.00	2.36
3	Tank (T3)	16.11	5.57	0.00	10.54	0.00
4	Tank (T4)	3.13	0.00	0.00	0.00	3.13
5	Tank (T5)	33.08	0.00	3.01	2.29	27.77
6	Tank (T6)	55.42	0.00	0.00	0.00	55.42
7	Tank (T7)	24.66	1.43	0.80	0.00	22.43
8	Tank (T8)	11.32	0.00	7.01	0.00	4.31
Grand Total		151.13	8.30	14.58	12.83	115.42

Note: This map and contents required to be ground-truth and vetted by the Collector and District Magistrate, Anantapuramu District and the Departments.

Prepared By



Andhra Pradesh Space Applications Centre
ITE & C Department, Govt., of A.P.
Vijayawada - 520010



14°35'0"N
14°32'30"N

14°35'0"N
14°32'30"N

77°5'0"E

77°7'30"E

77°10'0"E