

Mapping of Urban Tanks / Rivers and it's Changes Naidupeta Urban Local Body, Tirupati District, Andhra Pradesh



Source:

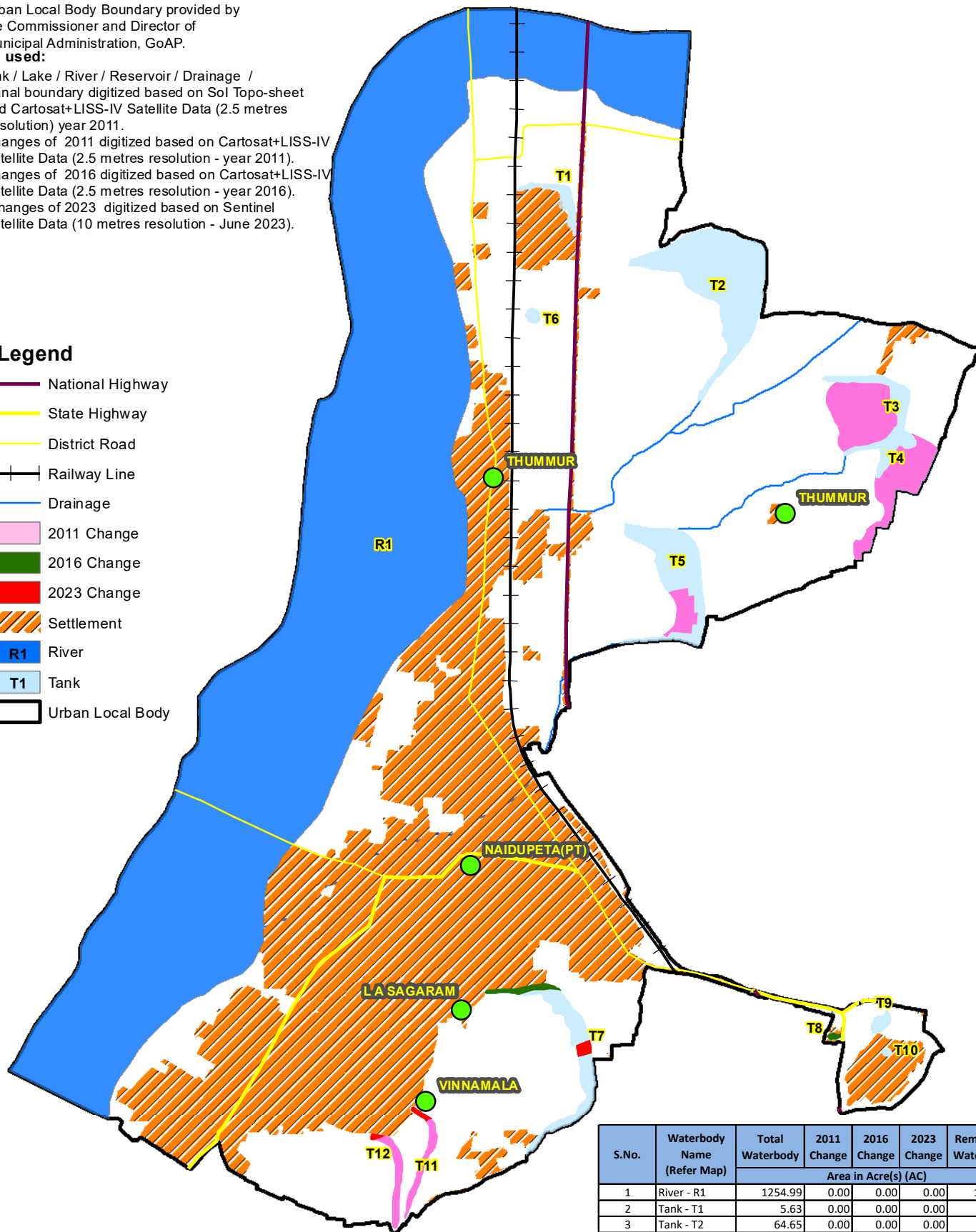
1. Urban Local Body Boundary provided by the Commissioner and Director of Municipal Administration, GoAP.

Data used:

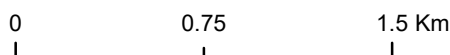
2. Tank / Lake / River / Reservoir / Drainage / Canal boundary digitized based on SoI Topo-sheet and Cartosat+LISS-IV Satellite Data (2.5 metres resolution) year 2011.
3. Changes of 2011 digitized based on Cartosat+LISS-IV Satellite Data (2.5 metres resolution - year 2011).
4. Changes of 2016 digitized based on Cartosat+LISS-IV Satellite Data (2.5 metres resolution - year 2016).
5. Changes of 2023 digitized based on Sentinel Satellite Data (10 metres resolution - June 2023).

Legend

- National Highway
- State Highway
- District Road
- Railway Line
- Drainage
- 2011 Change
- 2016 Change
- 2023 Change
- Settlement
- R1 River
- T1 Tank
- Urban Local Body



Note: This map and contents required to be ground-truth and vetted by the Collector and District Magistrate, Tirupati District and the Departments.



Prepared By



Andhra Pradesh Space Applications Centre
ITE& C Department, Govt., of A.P.
Vijayawada - 520010

S.No.	Waterbody Name (Refer Map)	Total Waterbody	2011 Change	2016 Change	2023 Change	Remaining Waterbody
Area in Acre(s) (AC)						
1	River - R1	1254.99	0.00	0.00	0.00	1254.99
2	Tank - T1	5.63	0.00	0.00	0.00	5.63
3	Tank - T2	64.65	0.00	0.00	0.00	64.65
4	Tank - T3	39.84	28.27	0.00	0.00	11.57
5	Tank - T4	27.64	22.26	0.00	0.00	5.38
6	Tank - T5	37.58	6.82	0.00	0.00	30.76
7	Tank - T6	1.42	0.00	0.00	0.00	1.42
8	Tank - T7	22.67	0.00	3.09	1.46	18.13
9	Tank - T8	0.63	0.00	0.63	0.00	0.00
10	Tank - T9	2.33	0.00	0.00	0.00	2.33
11	Tank - T10	0.55	0.00	0.00	0.00	0.55
12	Tank - T11	5.83	5.01	0.00	0.83	0.00
13	Tank - T12	6.24	5.76	0.00	0.48	0.00
Grand Total		1470.01	68.12	3.72	2.76	1395.42