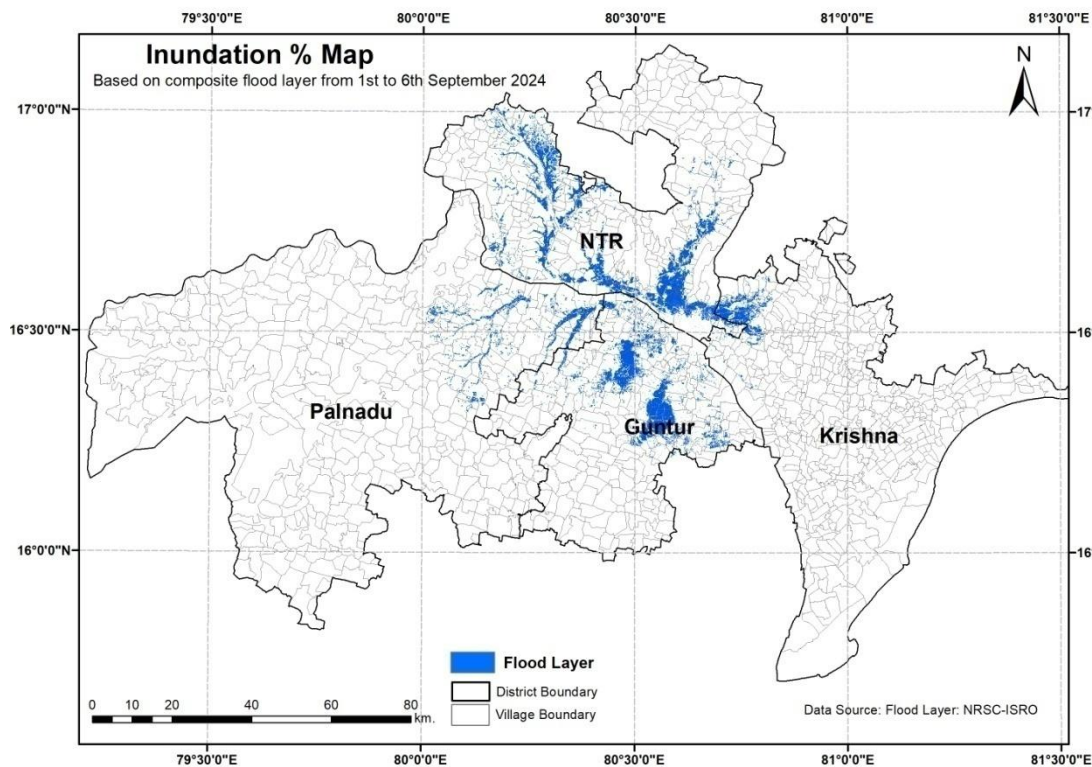


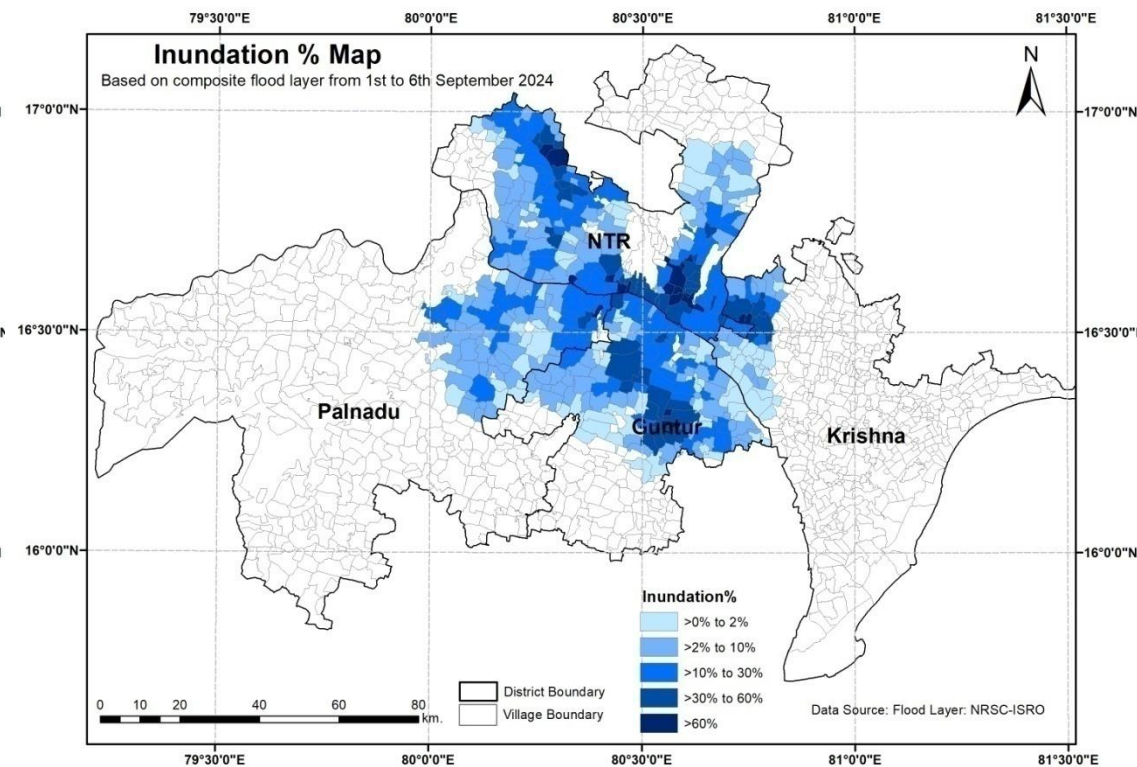
# Crop Area Inundation Due to Heavy Rainfall and Flooding in Andhra Pradesh

“A case study - Rain induced flood – 31st August 2024 to 6th September 2024”

## Inundation Map



## Inundation % Map



### Data Source

1. Flood layers from NRSC-ISRO (Date: 1<sup>st</sup> September, 3<sup>rd</sup> September, 5<sup>th</sup> September and 6<sup>th</sup> September 2024).
2. Crop Layer: Generated from MODIS data-250m. of 27<sup>th</sup> August 2024 (open source), NASA product.

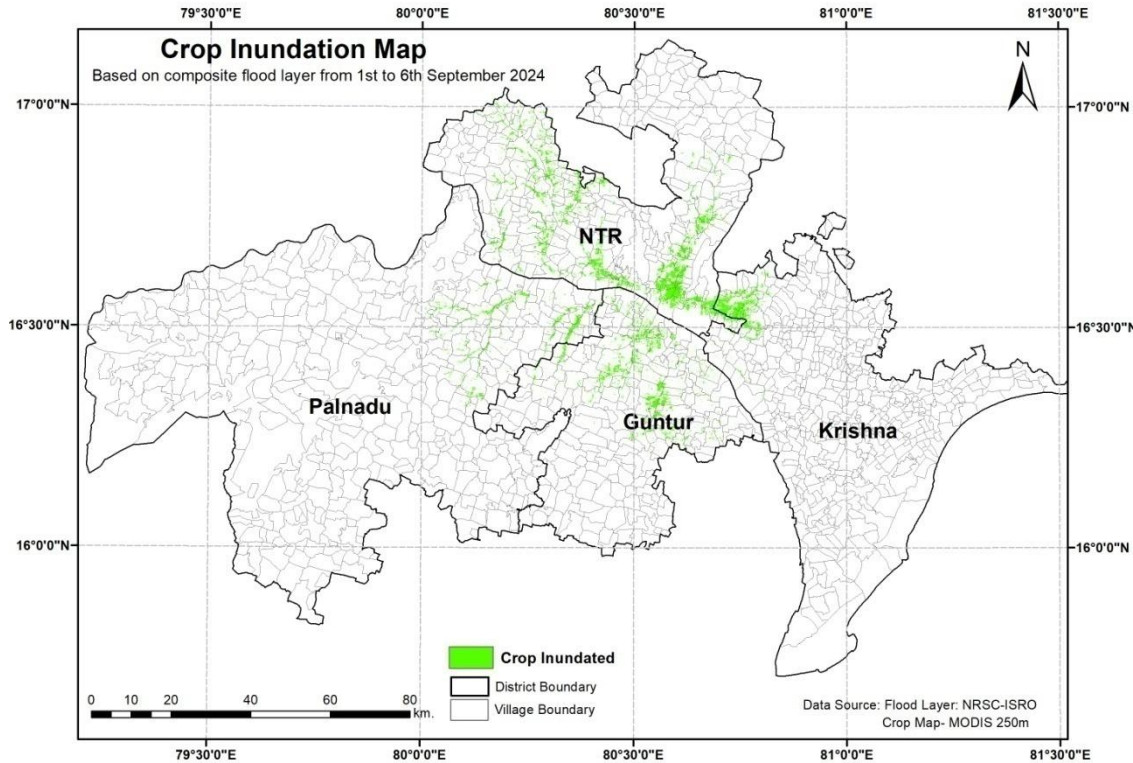
Prepared by: Sudheer Tiwari, Scientist, Agriculture. & Soils Division, APSAC, ITE&C, Department, Govt. of AP.

Reviewed by: Vice Chairman, APSAC, ITE&C, Department. Govt. of AP

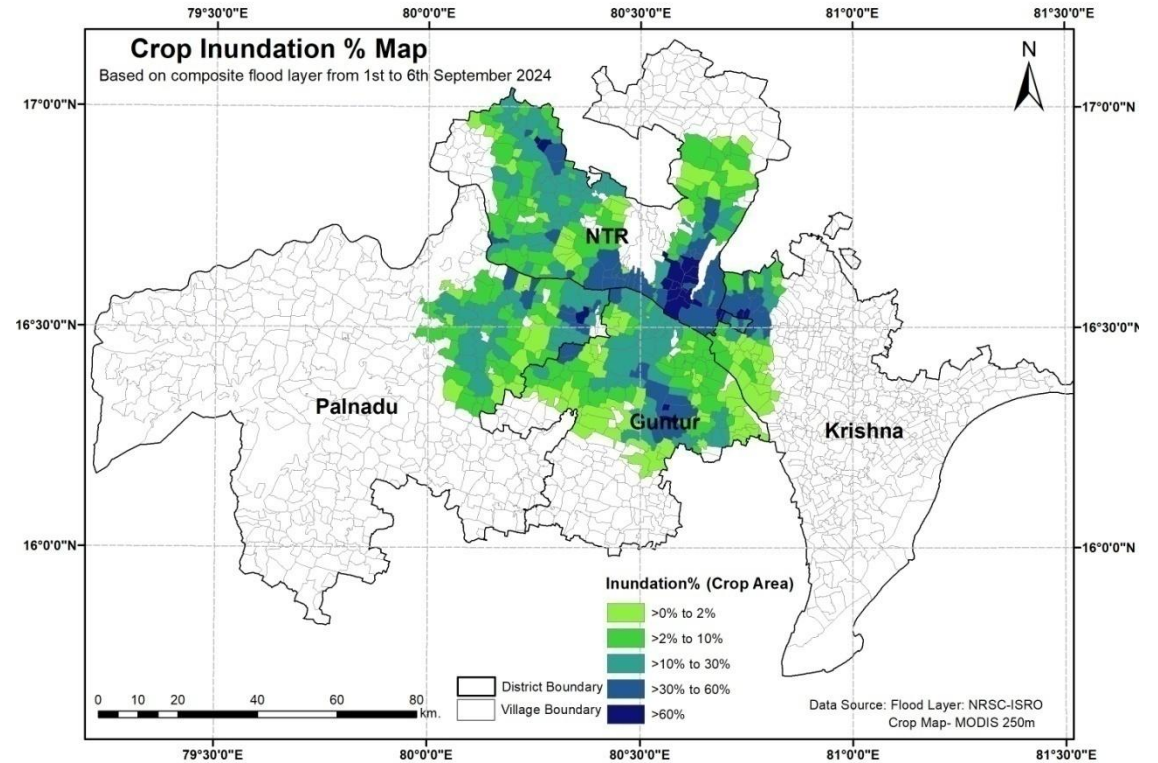
### Summary

1. The inundation map was generated using flood layers provided by NRSC, based on data from the 1st, 3rd, 5th and 6th of September 2024. A composite layer was created from these datasets, indicating a total flood-affected area of 64921.12ha.
2. Additionally, an inundation percentage map was developed, showing the proportion of each village affected by the flood, calculated based on the extent of the flooded area relative to the total village area.

## Crop Inundation Map

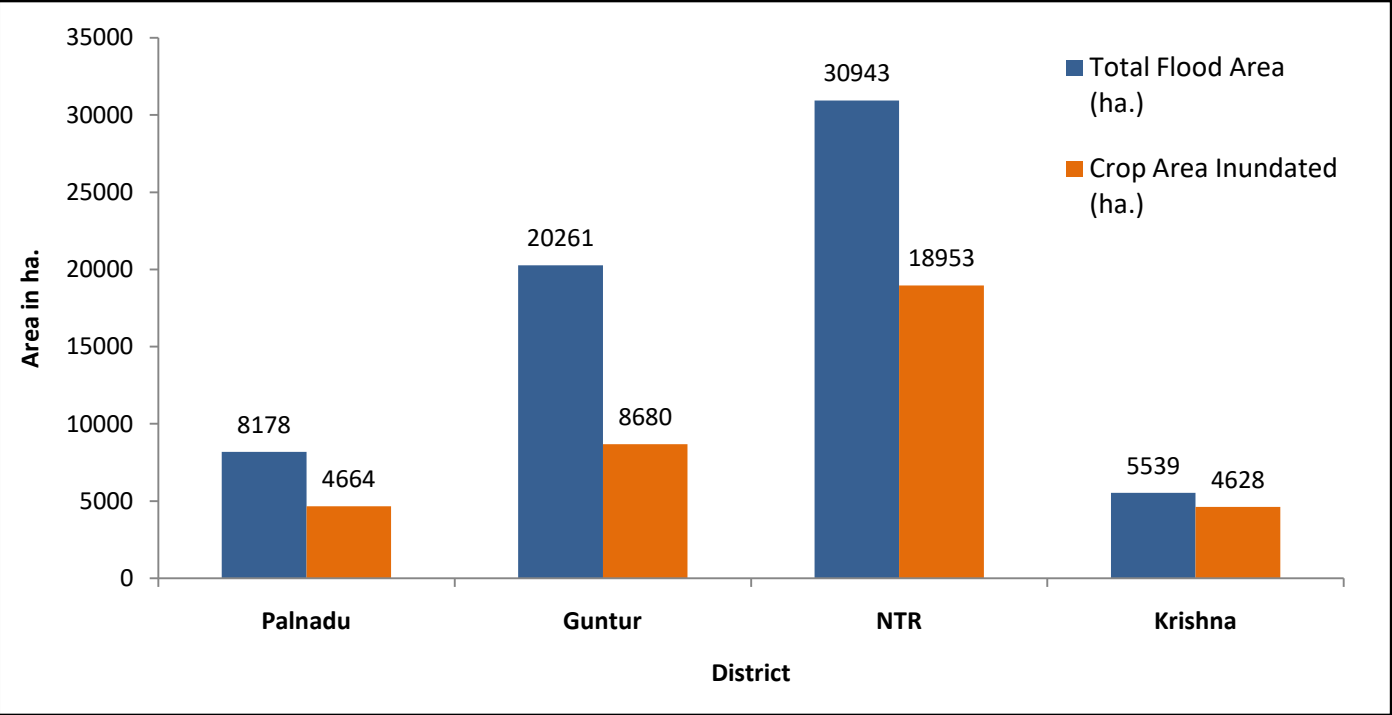


## Crop Inundation % Map



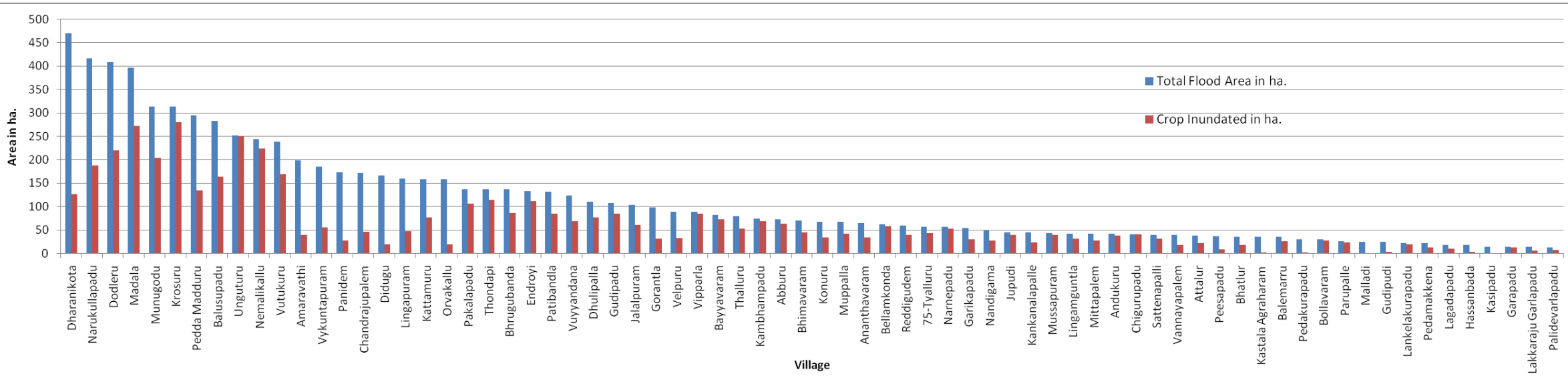
1. The total crop area inundated across the districts of NTR, Krishna, Palnadu, and Guntur is approximately 36924.48 ha.
2. A crop inundation percentage map has been created, which illustrates the proportion of the sown crop area in each village that has been affected by the flooding.
3. This map is based on a comparison between the total crop area sown and the crop area impacted by the floods.

# District-Level Statistics of Flooded Area and Crop Inundated Area (1st to 6th September 2024)

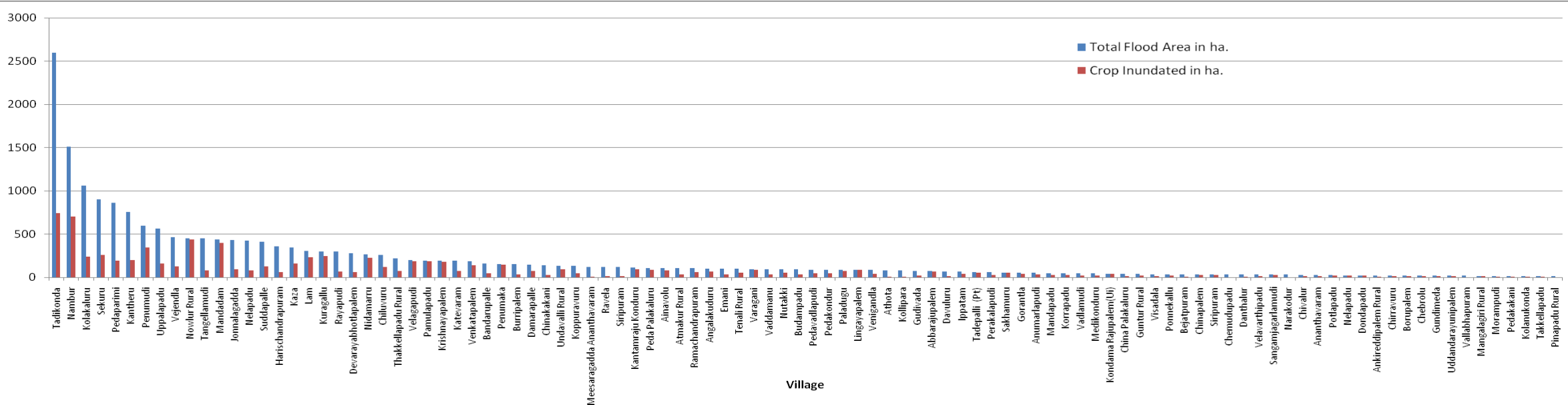


S. No.	District	Total Flood Area (ha.)	Crop Area Inundated (ha.)
1	Palnadu	8178	4664
2	Guntur	20261	8680
3	NTR	30943	18953
4	Krishna	5539	4628
<b>Total (ha.)</b>		<b>64921</b>	<b>36925</b>

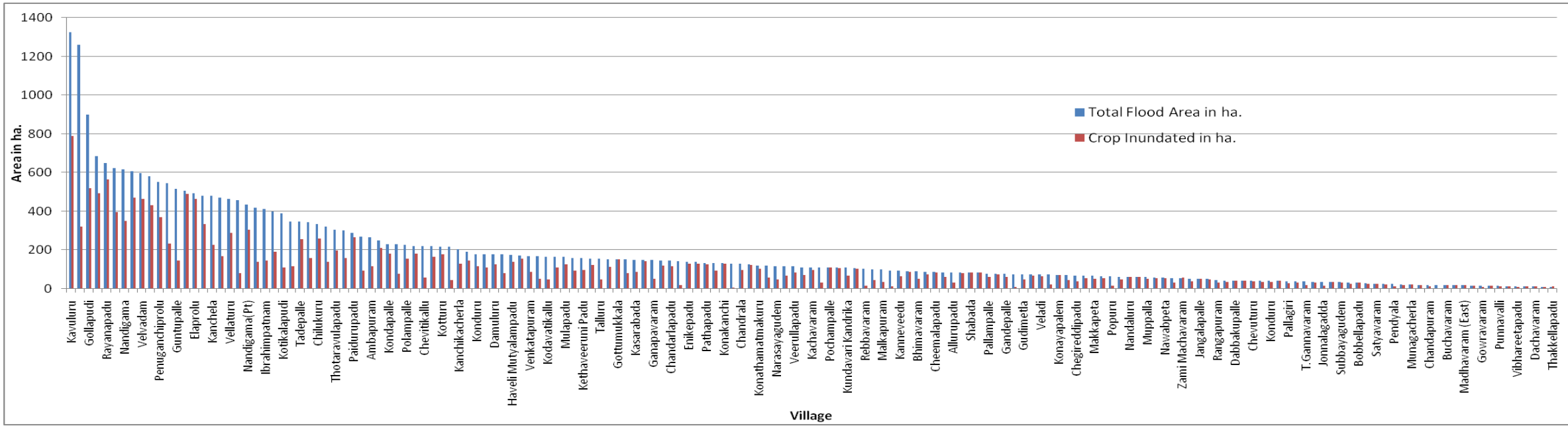
# 1. Palnadu district: Village wise Inundated Area and Crop Area Affected



# 2. Guntur district: Village wise Inundated Area and Crop Area Affected



### 3. NTR district: Village wise Inundated Area and Crop Area Affected



### 4. Krishna district: Village wise Inundated Area and Crop Area Affected

