

MONITORING OF IWMP WATERSHED PROJECTS USING GEO-INFORMATION

SUMMARY REPORT

IWMP-Batch-V

EAST GODAVARI -12/2013-14

Andhra Pradesh

Submitted to NRSC, Balanagar, Hyderabad

January-2023

T 0 - T 1 - T 2 - T 3 - T 4 - T 5



AGRICULTURE & SOIL
DIVISION
Andhra Pradesh Space
Applications Centre (APSAC)
ITE&C Department Govt. of
Andhra Pradesh



RURAL DEVELOPMENT AND
WATERSHED MONITORING
DIVISION
Land Resources and Land Use
Mapping and Monitoring Group,
Remote Sensing Application Area,
National Remote Sensing Centre, ISRO



DEPARTMENT OF LAND
RESOURCES
Ministry of Rural Development
Government of India

C O N T E N T S

- **EXECUTIVE SUMMARY**

01. STUDY AREA
02. SATELLITE & ANCILLARY DATA INCLUDING DRISHTI STATUS
03. MONITORING IN THE PROJECT AREA : Site wise changes in the project
04. CONCLUSIONS

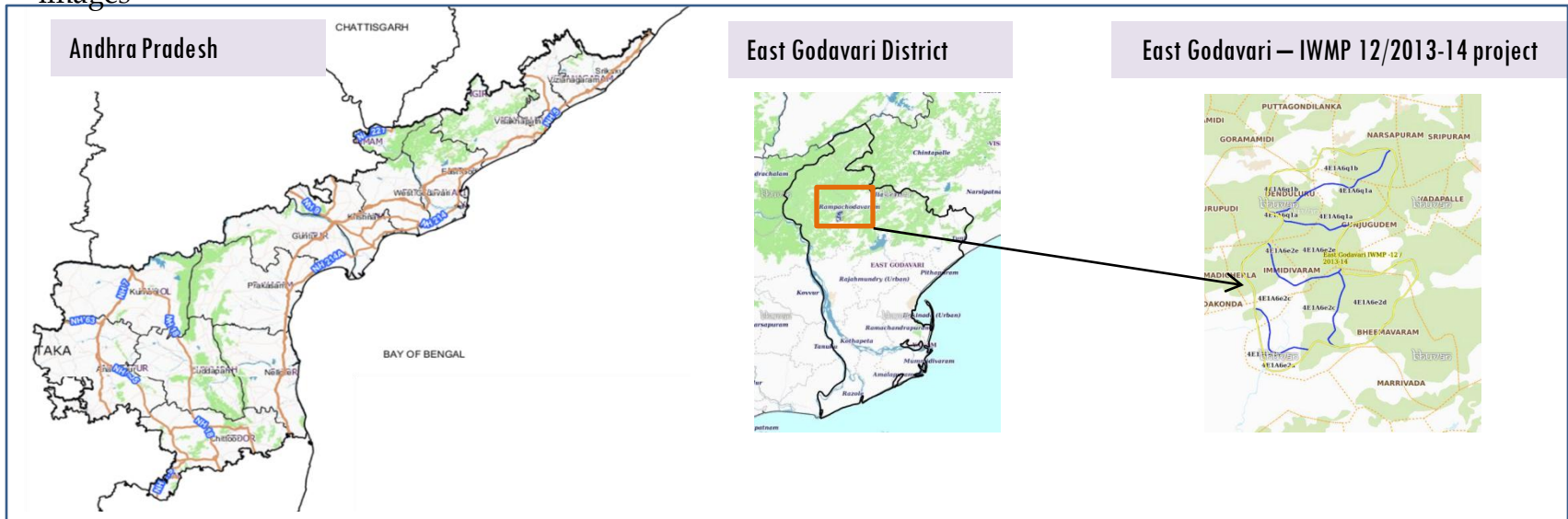
E X E C U T I V E S U M M A R Y

- Integrated Watersheds Management Project (IWMP) is a flagship programme of Department of Land Resources (DoLR), Ministry of Rural Development (MRD).
- National Remote Sensing Centre (NRSC), ISRO has designed and developed Bhuvan Geo-ICT Web portal tools namely - Srishti and Drishti for monitoring and evaluation of IWMP watersheds. It uses high spatial and temporal resolution sensors viz., Carto-1/2(2.5 m) , LISS-IV(5.8 m color).
- Current summary report gives details of Project - IWMP-12/2013-14, East Godavari District of Andhra Pradesh. The total geographical area of the project is **2,229 ha**. It comprises of 6 micro watersheds.
- In the project area 19 Drishti photos were uploaded showing check dams/Rock fill dam, livelihood activities, and remaining showing other activities.
- Water bodies have shown an decreased by 6.6 ha , which correspond to the various water bodies that have been converted into other land use classes in this period.
- Major percentage i.e. 26 % is covered by the agriculture, 49 % is covered by forest, 14 % is covered by scrubland and remaining by other land use classes.

PROJECT : EAST GODAVARI - IWMP-12/2013-14

DISTRICT : EAST GODAVARI , STATE : ANDHRA PRADESH

- The study area falls in Rampachodavaram Mandal of East Godavari district of Andhra Pradesh state. The total geographical area of the project is **2,258 ha**. It comprises of 6 micro watersheds. Location Map of the study area is shown in Figure below. Analysis is done for 2013-14 (T0) period (*Batch -1*) projects taking 2021-22 (T5) period satellite images



- The Climate is Comparatively moderate throughout the year except during the months of April to June when the temperature reaches a maximum of 48 deg. Centigrade.
- The normal rainfall of the district is 1280 mm. More than half of the rainfall is brought by south-west monsoon while a large portion of the rest of the district receives rainfall from the North-East Monsoon also, during October and November.

Satellite Data and Ancillary Data

Satellite data*	T0-A**	T0-B**	T5
	2013-14	2011-12	2021-22
LISS IV	2013-14		
SCENE 1			6-Jan-22
SCENE2			
SCENE 3			
SCENE 4			
CARTO	2013-14		
SCENE 1			6-Jan-22
SCENE2			
SCENE 3			
SCENE 4			




Ancillary Data

	Category	Sub category	Status
1	Thematic maps		
	LULC (1: 10 000)		
		DRAIANGE	YES
		SETTLEMENT	YES
		ROADS/RAILS	No
	LULC (1: 50 000)		
		2005-06	
		2008-09	
2	Activity Plan Maps		
3	Drishti Photographs		
		Total	19
4	Detailed Project Report		

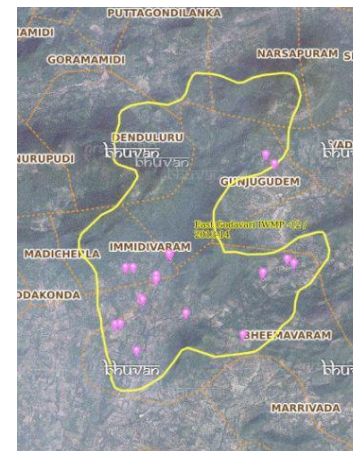
Natural Color Composite overlaid with Project boundaries and high detail stream network



Legend

-  Drainage (1:10000 Scale)
-  MWS Boundary
-  Project Boundary

Natural Color Composite overlaid with Drishti Points



Drishti Upload Status

Classification of the Activities

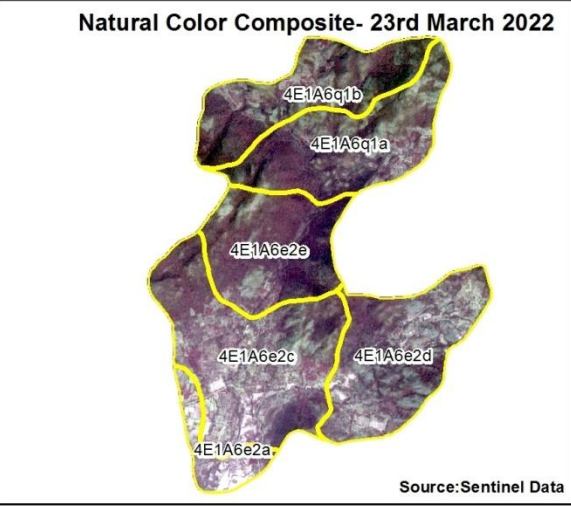
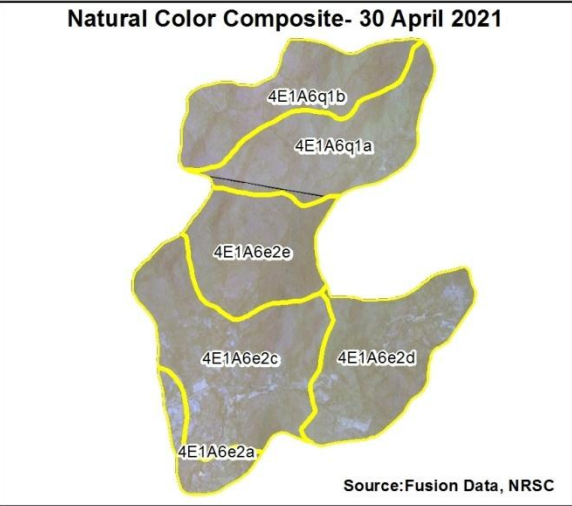
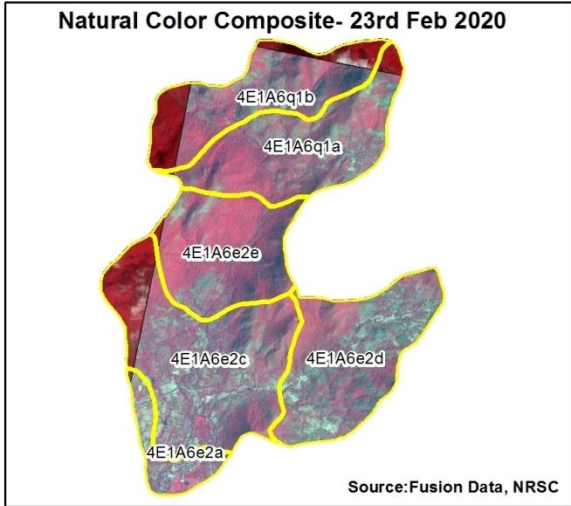
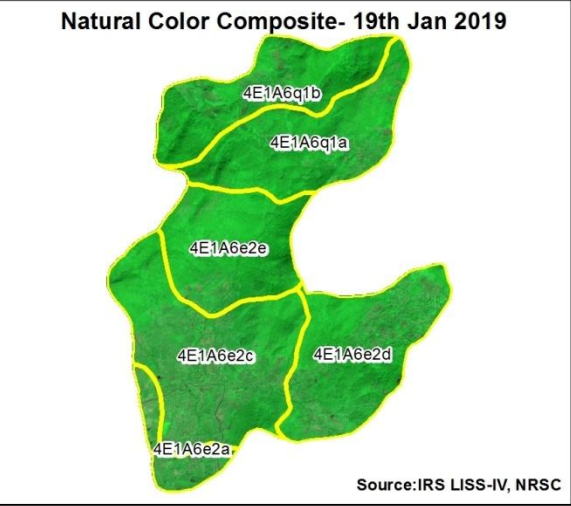
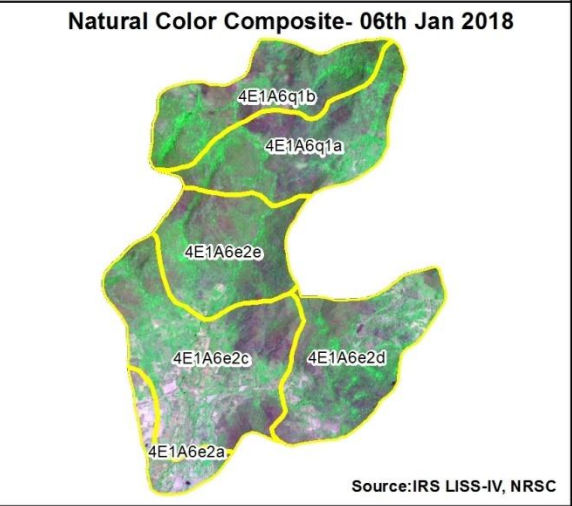
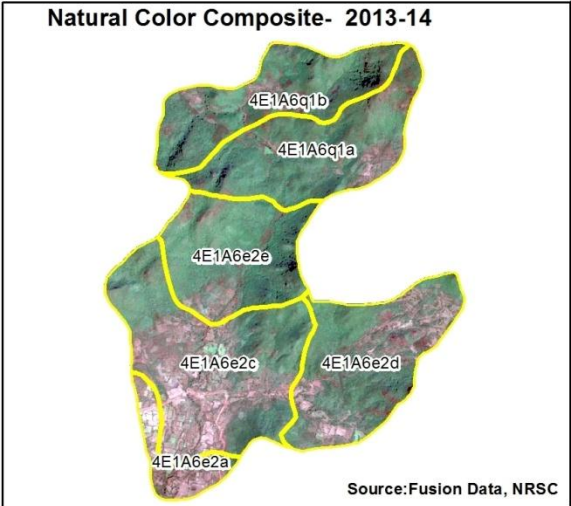
Sr. No	Activity	Drishti Photo	Visible on satellite
1	Afforestation	0	0
2	Horticulture	0	0
3	Agriculture	0	0
4	Pasture	0	0
5	Trench	0	0
6	Field Bunds	0	0
7	Terrace	0	0
8	Checks & Plugs	1	1
9	Gabion structure	0	0
10	Farm ponds/Dug out pit	1	1
11	Civil work-Check dams/Rock fill dam	1	1
12	Nallah Bunds/Drainage treatment	0	0
13	Percolation tanks / Ground water recharge structure	0	0
14	Production System and Micro-Enterprises	0	0
15	Livelihood Activities-Plantation/Horticulture	0	0
16	Capacity Building Activities	0	0
17	Entry Point Activity	0	0
18	Others	16	16
	TOTAL	19	19

MONITORING IN THE PROJECT AREA

Site Wise Changes in the Project

- Impacts of the activities carried out are presented through combination of Drishti and Srishti captures.
- T0 is the baseline period before implementation (2013-14) and T5 is 2021-22 period for monitoring.
- Captures are also provided wherever changes are observed in satellite images, that may match expected activity related impact, even though they don't have Drishti report yet.

Natural Colour Composite (NCC)



Monitoring of activities in East Godavari District, Andhra Pradesh. IWMP-12/2013-14



T0 Satellite data 2013



T1 Satellite data 2015



T2 Satellite data 2016



T3 Satellite data 2017



T4 Satellite data 2018



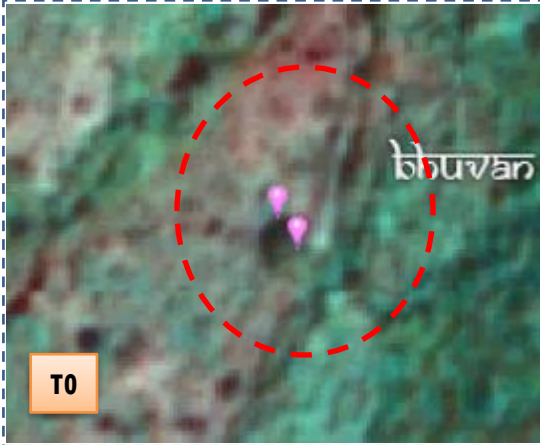
T5 Satellite data 2020



Drishti Id. 1704995

Horticulture

Monitoring of activities in East Godavari Dt Andhra Pradesh. IWMP-12/2013-14



T0

T0:2013-14



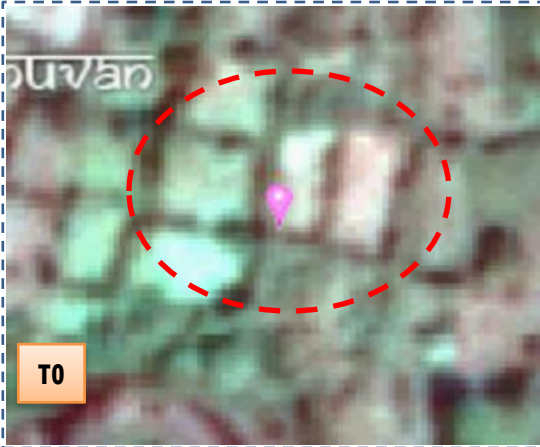
T1

T1: 09 November 2019



Drishti SI no. 7025417 MWS : 4E1A6e2e

Farm pond



T0

T0:2013-14



T1

T1: 09 November 2019



Drishti SI no. 3090200 MWS : 4E1A6e2c

Horticulture

Monitoring of activities in East Godavari Dt Andhra Pradesh. IWMP-12/2013-14



T0:2013-14



T1: 09 November 2019

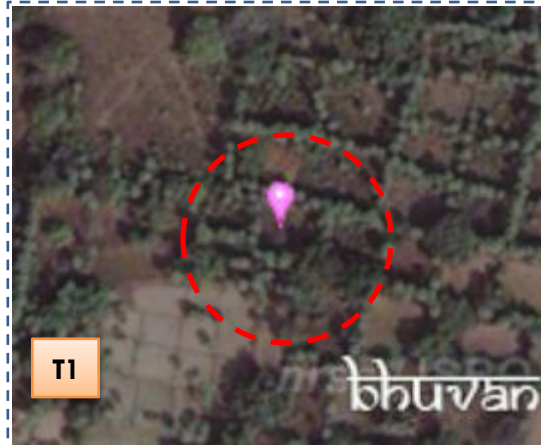


Drishti SI no. 7036521 MWS : 4E1A6e2c

Percolation tank



T0:2013-14



T1: 09 November 2019



Drishti SI no. 3095096 MWS : 4E1A6q1a

Percolation tank

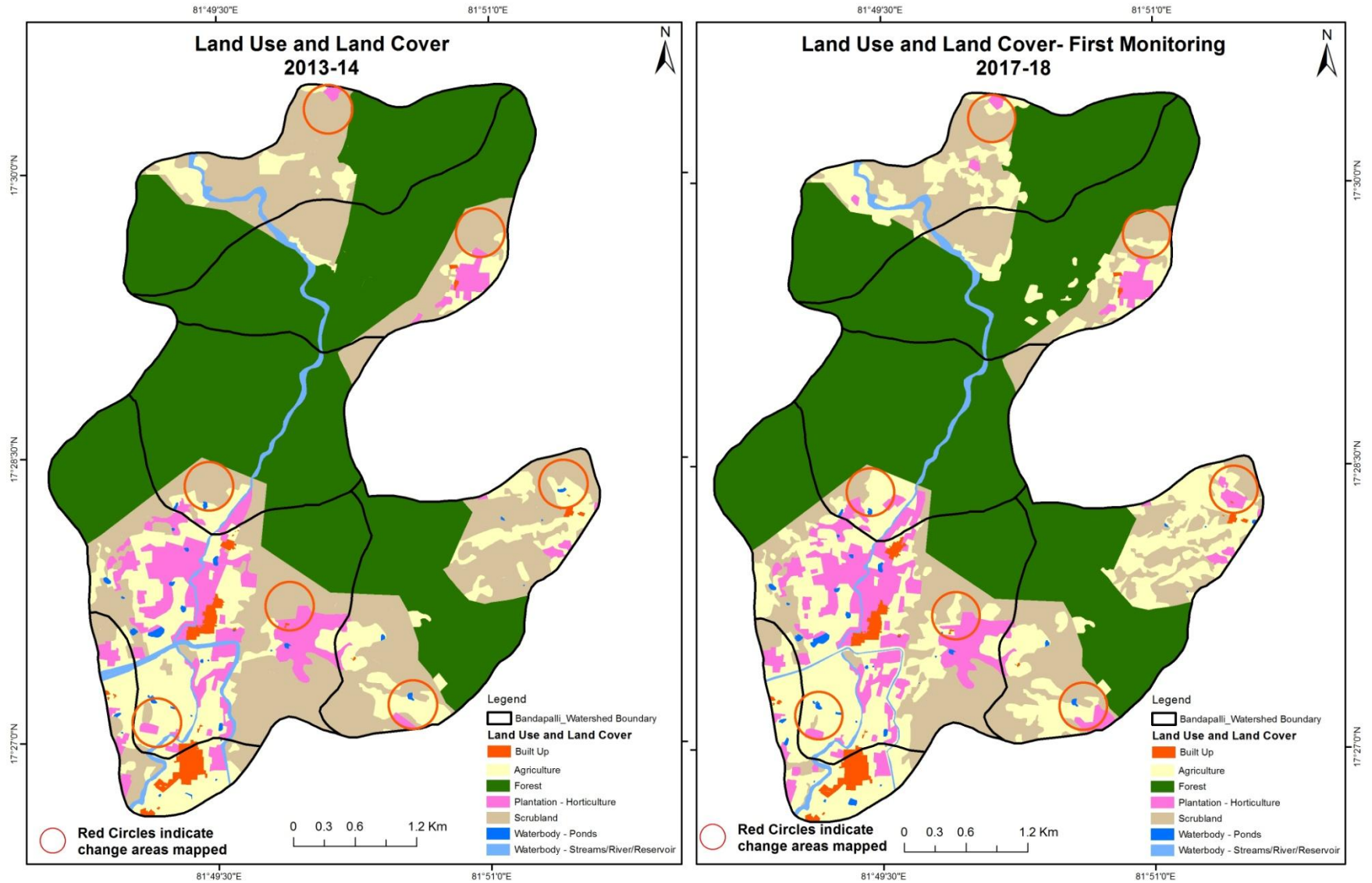
MONITORING IN THE PROJECT AREA

Land use and Land cover Changes in the Project

- Change in land use and land cover from T0 to T5 are analyzed in terms of built up, mining/dump, agriculture, plantation- horticulture, forest, barren rocky waterbody-streams/river/reservoir and waterbody -ponds.
- Captures are also provided wherever changes are observed in satellite images, that may match expected activity related impact, even though they don't have Drishti report yet.
- The result obtained for the period T0 to T5 are given in the change matrix table.
- In matrix table column represents the T0 (2013-14) and row represents the T5 (2021-22)

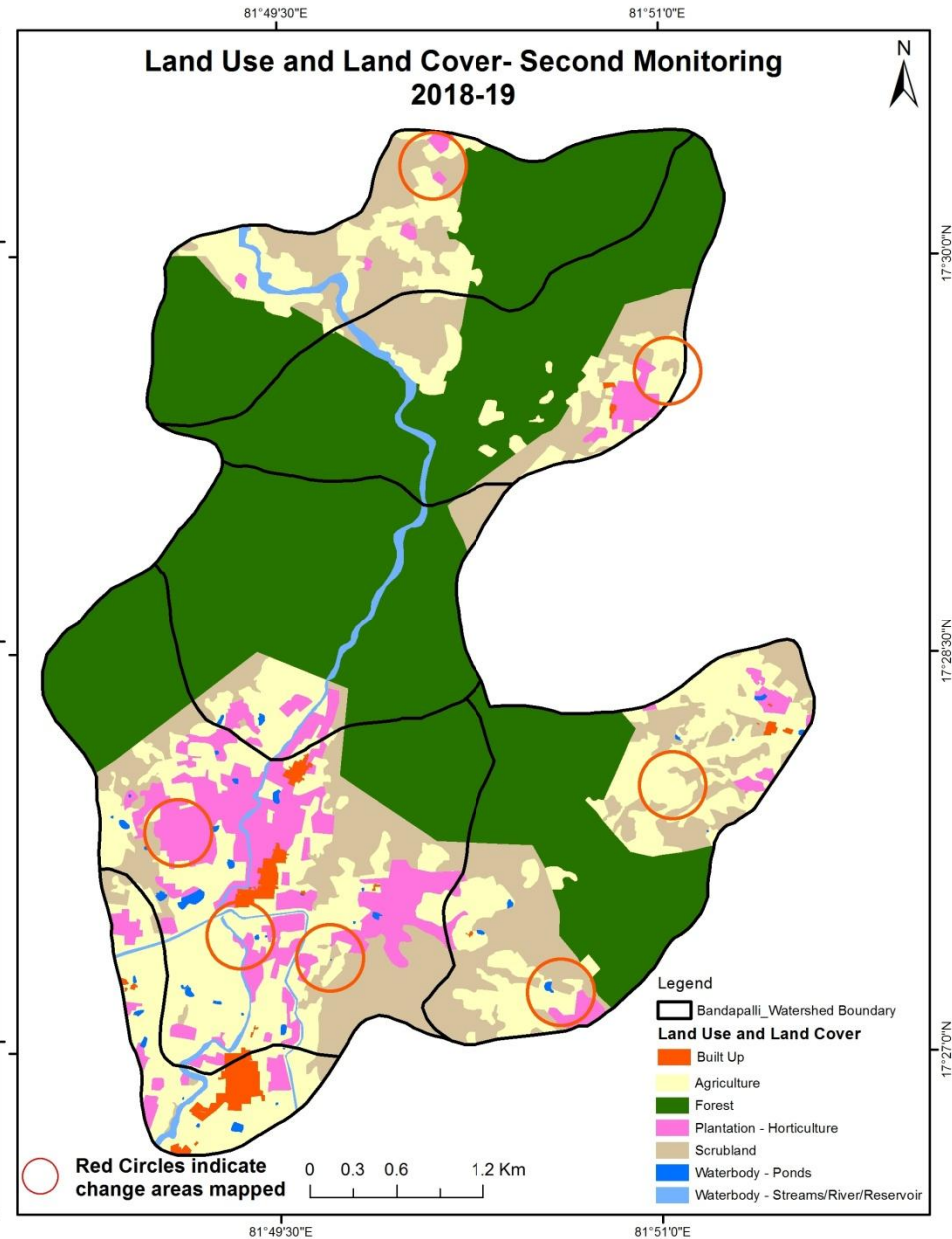
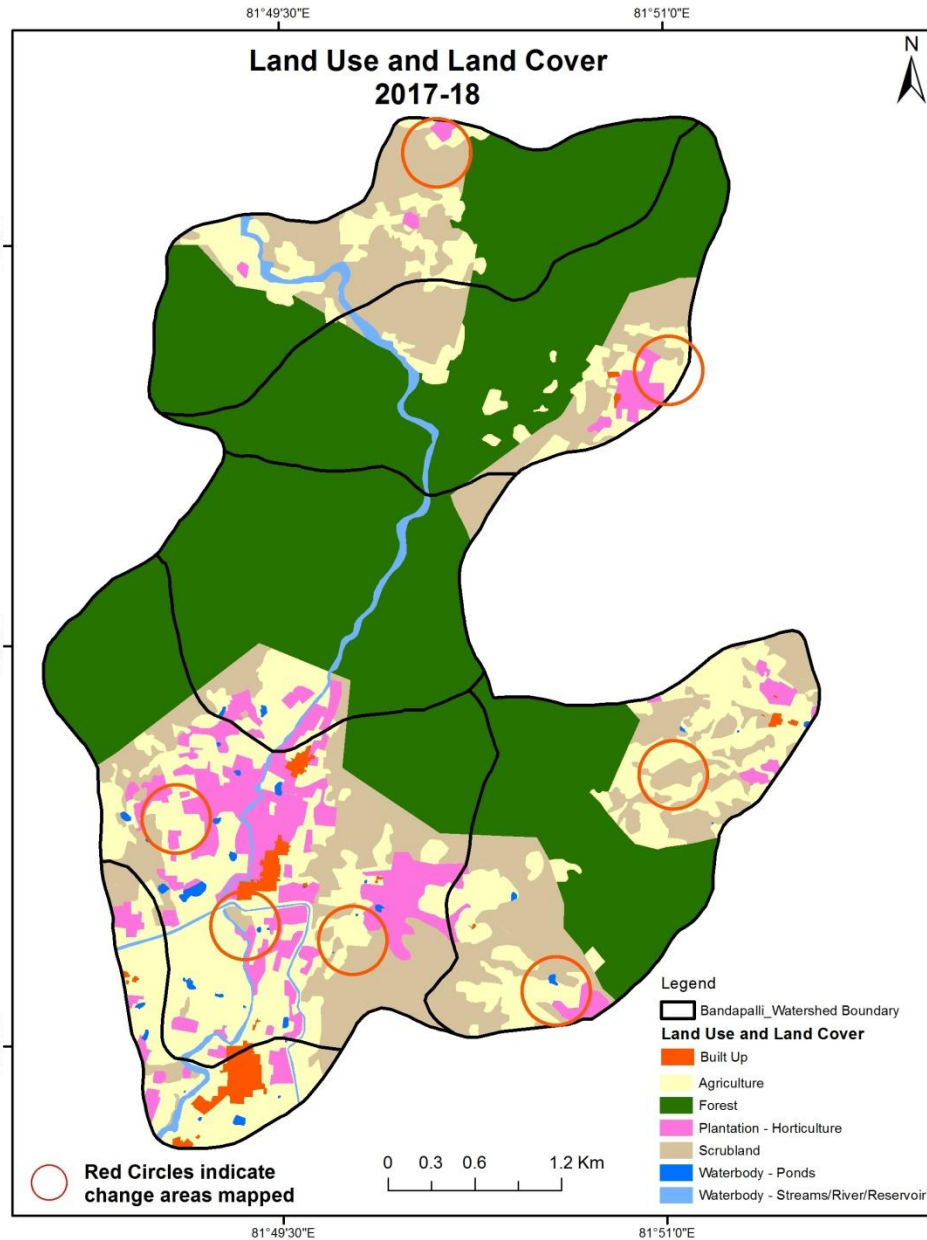
Comparative assessment of Land Use and Land Cover for Pre and Post IWMP implementation (2013-14 to 2017-18)

Scale: 1:10000



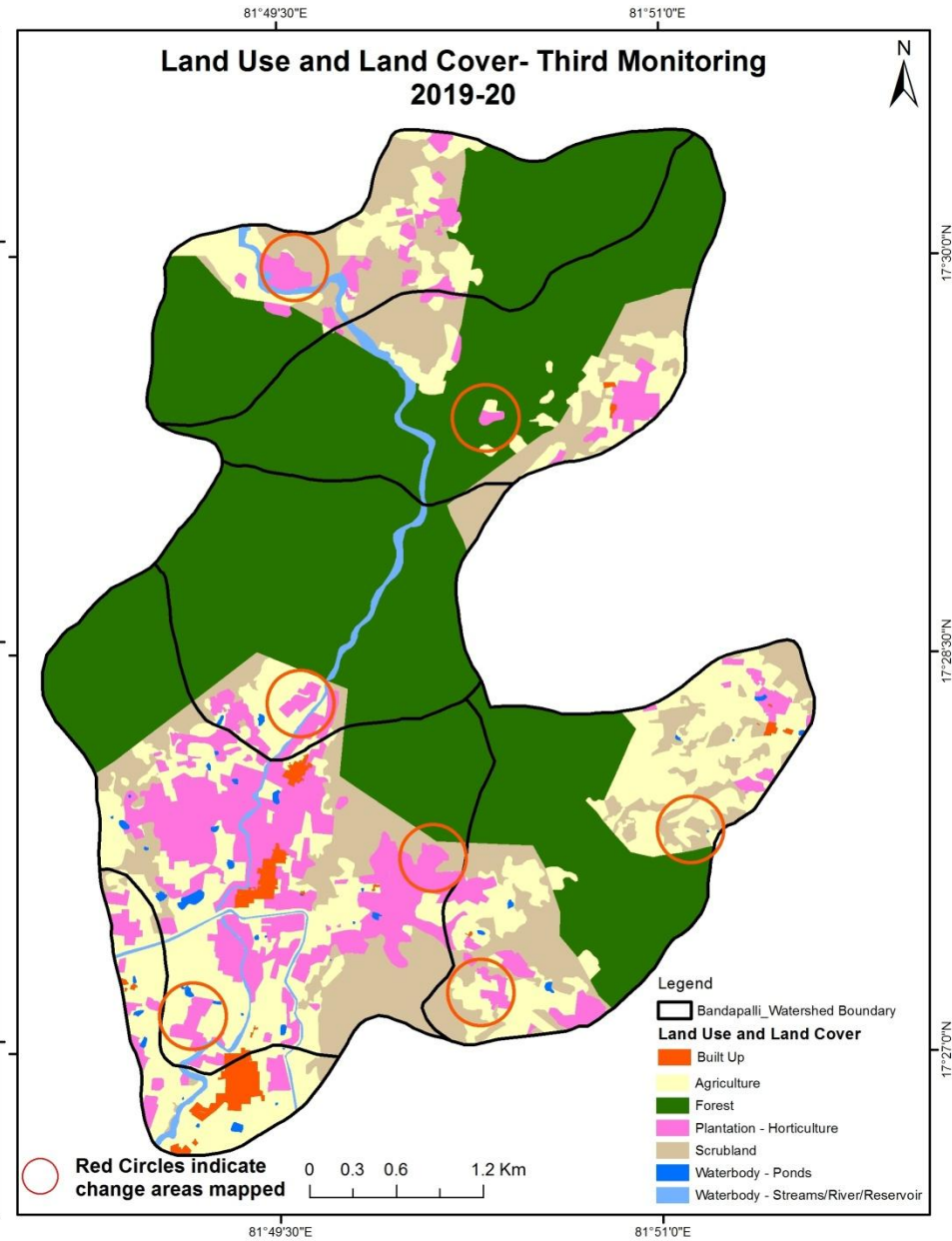
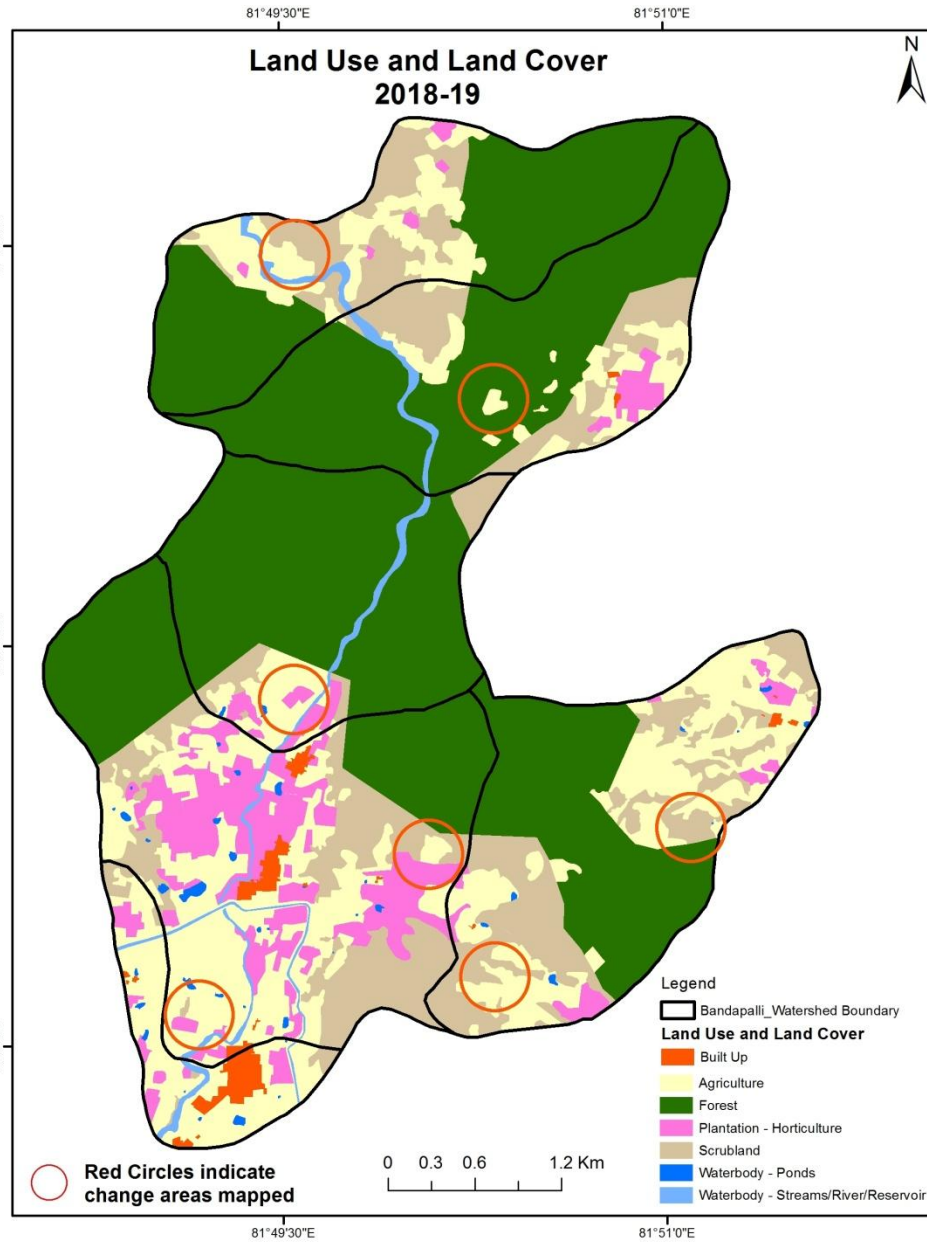
Comparative assessment of Land Use and Land Cover for Pre and Post IWMP implementation (2017-18 to 2018-19)

Scale: 1:10000



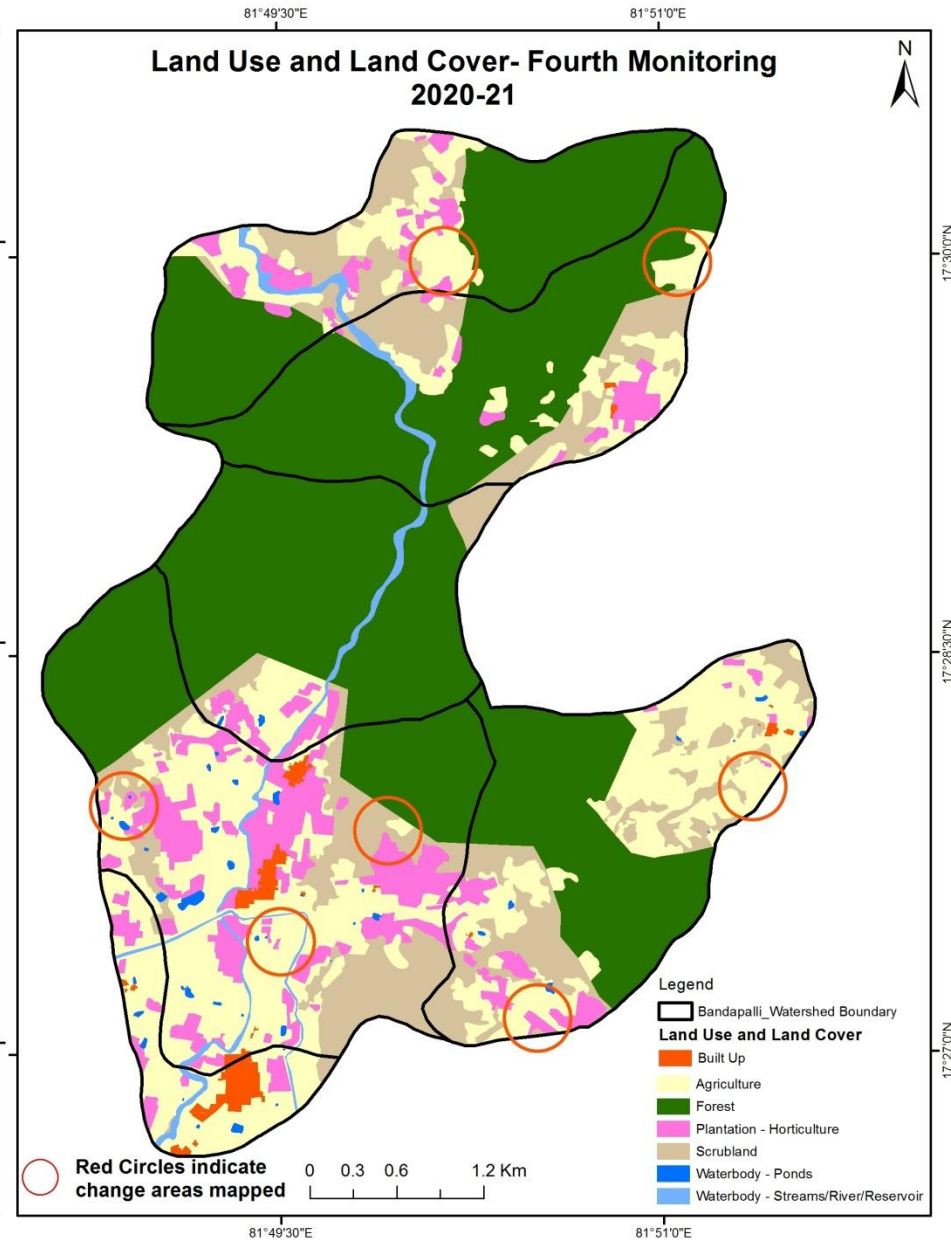
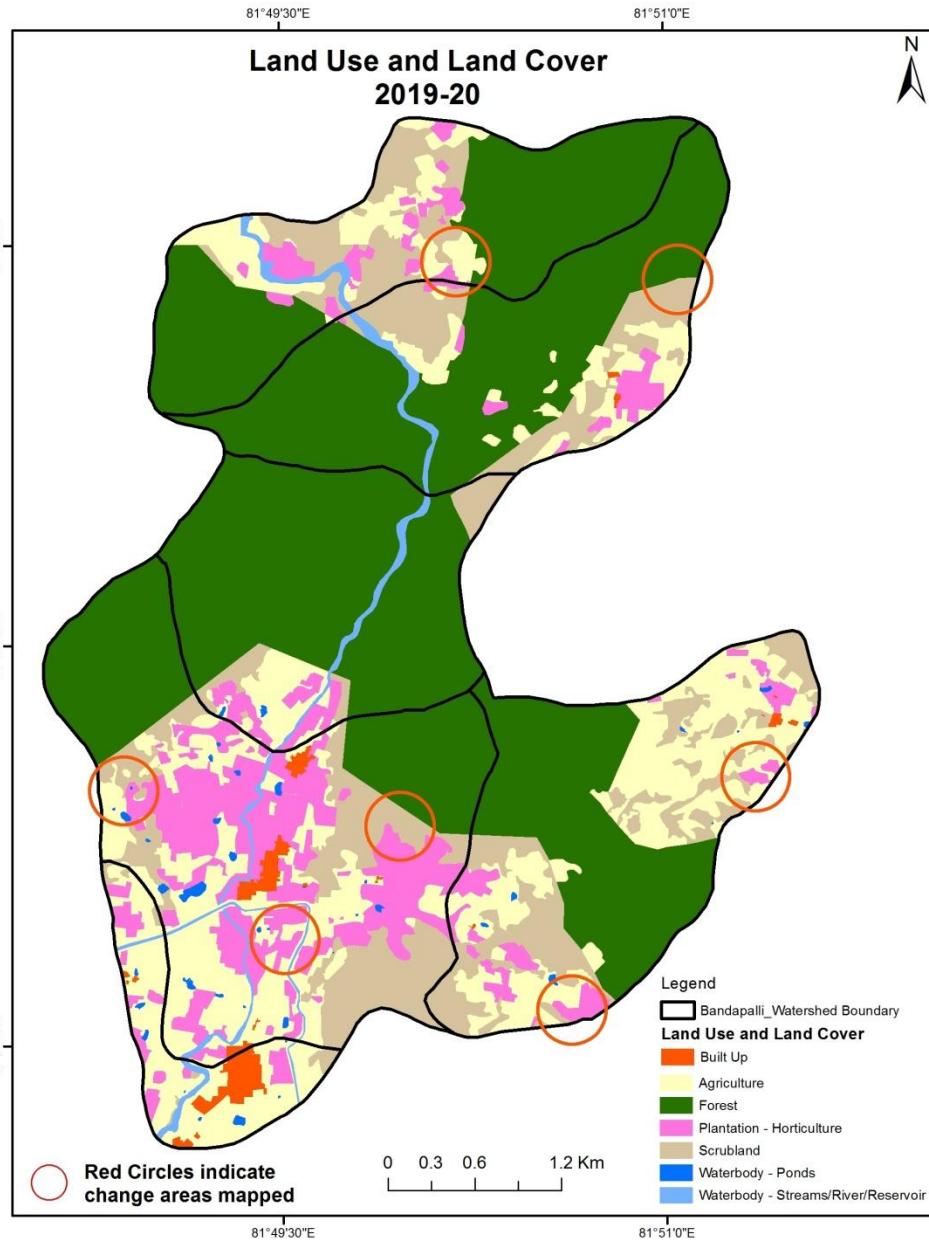
Comparative assessment of Land Use and Land Cover for Pre and Post IWMP implementation (2018-19 to 2019-20)

Scale: 1:10000



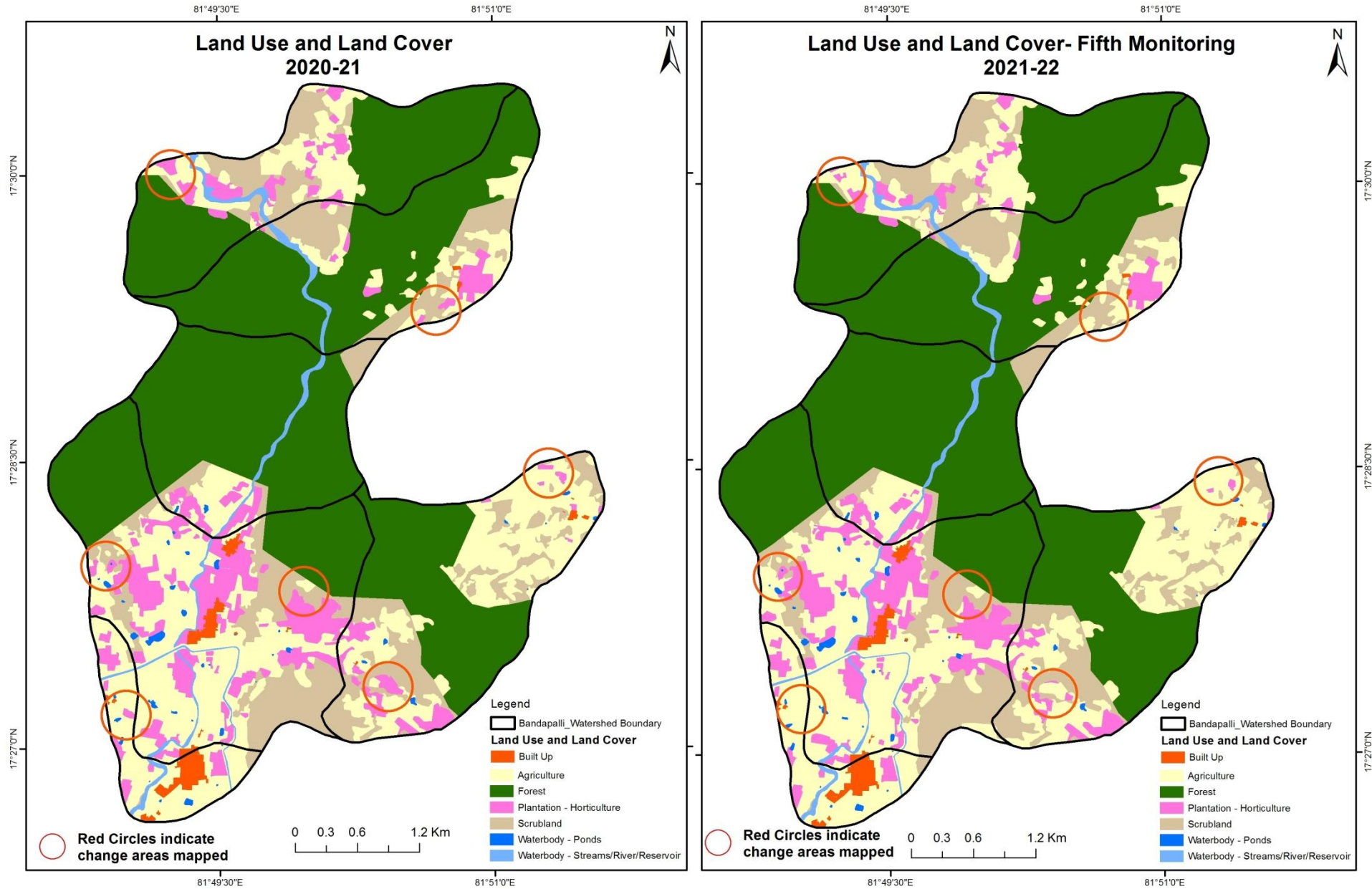
Comparative assessment of Land Use and Land Cover for Pre and Post IWMP implementation (2019-20 to 2020-21)

Scale: 1:10000



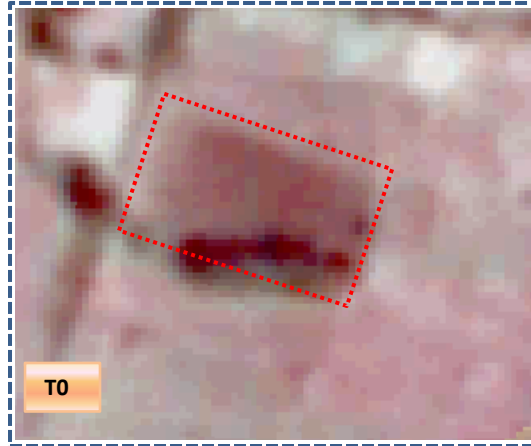
Comparative assessment of Land Use and Land Cover for Pre and Post IWMP implementation (2020-21 to 2021-22)

Scale: 1:10000

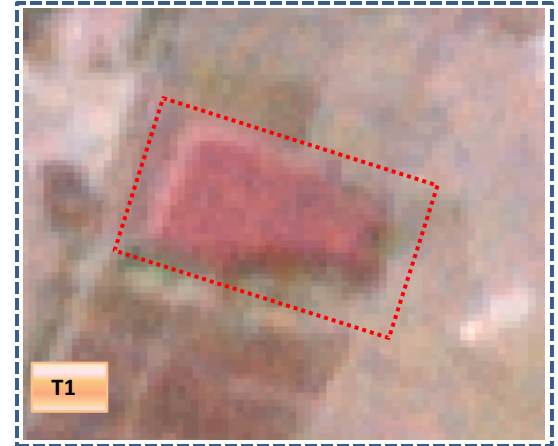


Land Use and Land Cover changes for Pre and Post treatment dates

Agriculture to Water body

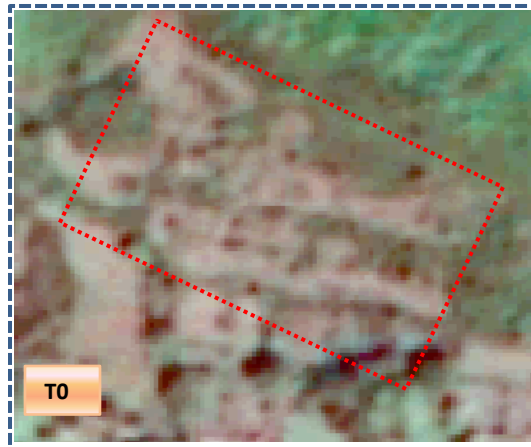


T0: 2013-14 ($81^{\circ}49'19.429''\text{E}$ $17^{\circ}26'42.896''\text{N}$)

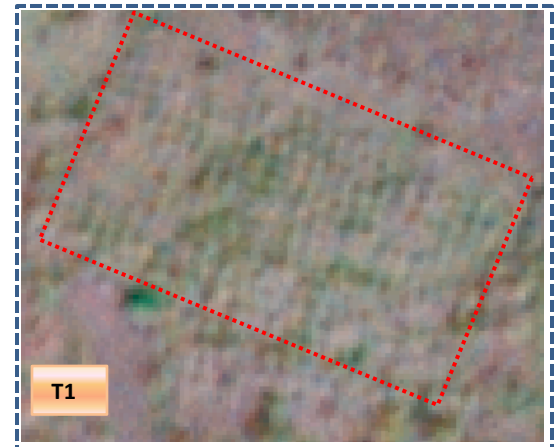


T1: 06 January 2018

Agriculture to Plantation



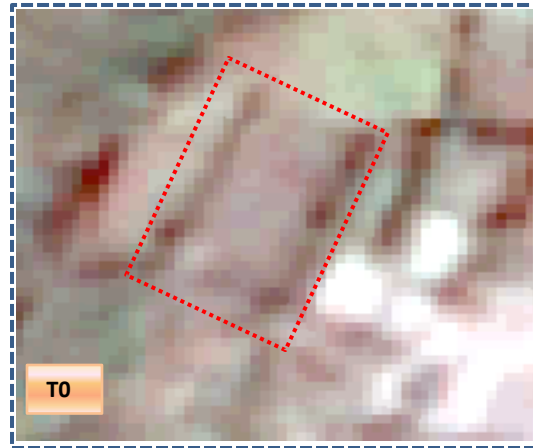
T0: 2013-14 ($81^{\circ}51'25.651''\text{E}$ $17^{\circ}28'18.556''\text{N}$)



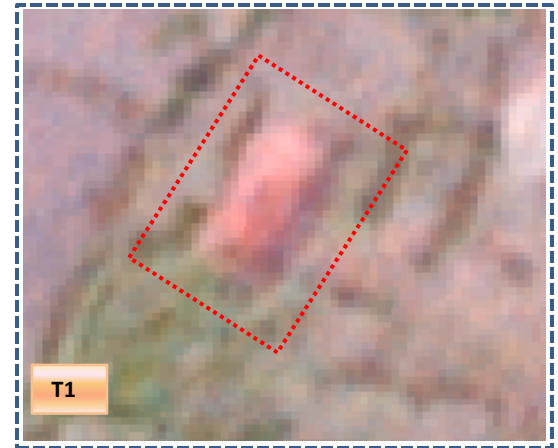
T1: 06 January 2018

Land Use and Land Cover changes for Pre and Post treatment dates

Agriculture to Water body

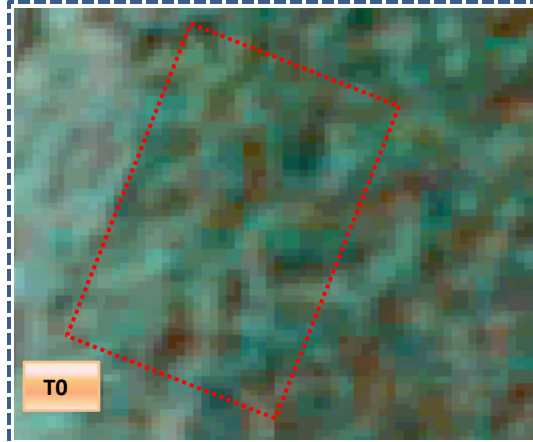


T0: 2013-14 (81°48'57.894"E 17°27'2.575"N)



T1: 06 January 2018

Scrubland to Agriculture



T0: 2013-14 (81°49'42.275"E 17°28'11.547"N)



T1: 06 January 2018

Table showing change matrix depicting Land cover transitions during study period-2013-14 to 2017-18

Land cover	Monitoring period (T1)										Units in Hectares	
	Built up	Mining/ dump	Agriculture	Plantation Horticulture	Forest	Forest Plantation	Barren Rocky	Scrub	Waterbody- Streams/River	Water body Ponds	Grand Total	
T0												
Built up	21.01										21.01	
Mining/dump												
Agriculture	0.64		297.99	20.62						0.94	320.20	
Plantation Horticulture	0.04		10.39	125.97						0.07	136.46	
Forest			13.01		1104.92						1117.93	
Forest Plantation												
Barren Rocky												
Scrub	0.40		151.86	8.30				423.77		0.01	584.33	
Waterbody- Streams/River			8.11						35.27		43.38	
Waterbody – Ponds				0.25						5.79	6.04	
Grand Total	22.08		481.36	155.14	1104.92			423.77	35.27	6.81	2229.35	

- In matrix table diagonal elements represent the both periods in the same class and off diagonal elements represents the changes in between the classes.
- In T0 22 ha of the agriculture area has decreased and it is converted into Built-up, plantation and water body in T1.
- In T1 183 ha of the agriculture area has increased from plantations, forest, scrubland and water body of T0. The additional agriculture are coming from waterbody in T1 represents seasonal agriculture.

Table showing change matrix depicting Land cover transitions during study period-2017-18 to 2018-19

Land cover	Monitoring period (T2)										Units in Hectares		
	Built up	Mining/ dump	Agriculture	Plantation Horticulture	Forest	Forest Plantation	Barren Rocky	Scrub	Waterbody- Streams/River	Water body Ponds	Grand Total		
T1													
Built up	22.08												22.08
Mining/dump													
Agriculture			467.79	13.28							0.28		481.36
Plantation Horticulture			0.26	154.60							0.28		155.14
Forest					1104.92								1104.92
Forest Plantation													
Barren Rocky													
Scrub			41.86	0.95				380.96					423.77
Waterbody- Streams/River									35.27				35.27
Waterbody – Ponds										6.81			6.81
Grand Total	22.08		509.91	168.83	1104.92			380.96	35.27		7.38		2229.35

- In matrix table diagonal elements represent the both periods in the same class and off diagonal elements represents change in between the classes.
- In T1 13 ha of the agriculture area has decreased and it is converted into plantations and water body in T2.
- In T2 42 ha of the agriculture area has increased from plantations and scrubland of T1.
- The additional agriculture are coming from waterbody in T2 represents seasonal agriculture.

Table showing change matrix depicting Land cover transitions during study period-2018-19 to 2019-20

Land cover	Monitoring period (T3)										Units in Hectares		
	Built up	Mining/ dump	Agriculture	Plantation Horticulture	Forest	Forest Plantation	Barren Rocky	Scrub	Waterbody- Streams/River	Water body Ponds	Grand Total		
Built up	21.98			0.10									22.08
Mining/dump													
Agriculture	0.12		434.37	75.30							0.12		509.91
Plantation Horticulture				168.83									168.83
Forest			1.33		1103.59								1104.92
Forest Plantation													
Barren Rocky													
Scrub			29.04	5.70				346.21					380.96
Waterbody- Streams/River									35.27				35.27
Waterbody – Ponds											7.38		7.38
Grand Total	22.10		464.75	249.93	1103.59			346.21	35.27		7.50		2229.35

- In matrix table diagonal elements represent the both periods in the same class and off diagonal elements represents change in between the classes.
- In T2 75 ha of the agriculture area has decreased and it is converted into Built-up, plantations and water body in T3.
- In T3 30 ha of the agriculture area has increased from forest and scrubland of T2.
- The additional agriculture are coming from waterbody in T3 represents seasonal agriculture.

Table showing change matrix depicting Land cover transitions during study period-2019-20 to 2020-21

Land cover	Monitoring period (T4)										Units in Hectares		
	Built up	Mining/ dump	Agriculture	Plantation Horticulture	Forest	Forest Plantation	Barren Rocky	Scrub	Waterbody- Streams/River	Water body Ponds	Grand Total		
Built up	22.10												22.10
Mining/dump													
Agriculture			455.41	9.33									464.75
Plantation Horticulture			60.34	189.60									249.93
Forest			11.76		1091.83								1103.59
Forest Plantation													
Barren Rocky													
Scrub			25.18					321.03					346.21
Waterbody- Streams/River											35.27		35.27
Waterbody – Ponds									7.50				7.50
Grand Total	22.10		552.69	198.93	1091.83			321.03	7.50		35.27		2229.35

- In matrix table diagonal elements represent the both periods in the same class and off diagonal elements represents change in between the classes.
- In T3 9.3 ha of the agriculture area has decreased and it is converted into plantations in T4.
- In T4 97 ha of the agriculture area has increased from plantation, forest and scrubland of T3.
- The additional agriculture are coming from waterbody in T4 represents seasonal agriculture.

Table showing change matrix depicting Land cover transitions during study period-2020-21 to 2021-22

Land cover	Monitoring period (T5)										Units in Hectares		
	Built up	Mining/ dump	Agriculture	Plantation Horticulture	Forest	Forest Plantation	Barren Rocky	Scrub	Waterbody- Streams/River	Water body Ponds	Grand Total		
T4													
Built up	22.10												22.10
Mining/dump													
Agriculture			552.69										552.69
Plantation Horticulture			21.95	176.98									198.93
Forest					1091.83								1091.83
Forest Plantation													
Barren Rocky													
Scrub			5.50					315.53					321.03
Waterbody- Streams/River									35.27				35.27
Waterbody – Ponds											7.50		7.50
Grand Total	22.10		580.14	176.98	1091.83			315.53	35.27		7.50		2229.35

- In matrix table diagonal elements represent the both periods in the same class and off diagonal elements represents change in between the classes.
- In T5 27.4 ha of the agriculture area has increased from plantations and scrubland of T4.
- The additional agriculture are coming from waterbody in T5 represents seasonal agriculture.

Conclusion

1. DPR of the project is uploaded on to Bhuvan Portal.
2. The LULC shows that there is an increase in Crop land, Built up area, Reservoir / Tanks & decrease in Scrubland as presented in the change matrix for different years.
3. There is an decrease of 6.6 Hectares in Reservoir / Tanks area as compared between baseline LU/LC data 2013-14 (T0) & 2021-22 (T5) years.
4. There is an increase of 161, 28, 87 & 27 Hectares from T0-T1, T1-T2, T3-T4 & T4-T5 respectively and overall increase of 259 Hectares in Crop land area as compared between baseline LU/LC data 2013-14 (T0) & 2021-22 (T5) years.
5. About **40 ha of the plantation/horticulture area has been increased** in during the monitoring period of 2013-14 (T0) to 2021-22 (T5) years.
6. There is a decrease of 268 Hectares in Scrubland area as compared between 2013-14 (T0) & 2021-22 (T5) years.
7. Farm ponds (01) is visible on IWMP Bhuvan Srishti portal out of Bhuvan Drishti photo of Farm ponds (01) verified from the portal.