

# MONITORING OF IWMP WATERSHED PROJECTS USING GEO-INFORMATION

## SUMMARY REPORT

YSR KADAPA -47/2011-12  
Andhra Pradesh

Submitted to NRSC, Balanagar, Hyderabad  
February-2022

**T 0 - T 1 - T 2 - T 3 - T 4 - T 5**



AGRICULTURE & SOIL  
DIVISION  
Andhra Pradesh Space  
Applications Centre (APSAC)  
ITE&C Department Govt. of  
Andhra Pradesh



RURAL DEVELOPMENT AND  
WATERSHED MONITORING  
DIVISION  
Land Resources and Land Use  
Mapping and Monitoring Group,  
Remote Sensing Application Area,  
National Remote Sensing Centre, ISRO



DEPARTMENT OF LAND  
RESOURCES  
Ministry of Rural Development  
Government of India

# C O N T E N T S

- **EXECUTIVE SUMMARY**

01. STUDY AREA
02. SATELLITE & ANCILLARY DATA INCLUDING DRISHTI STATUS
03. MONITORING IN THE PROJECT AREA : Site wise changes in the project
04. CONCLUSIONS

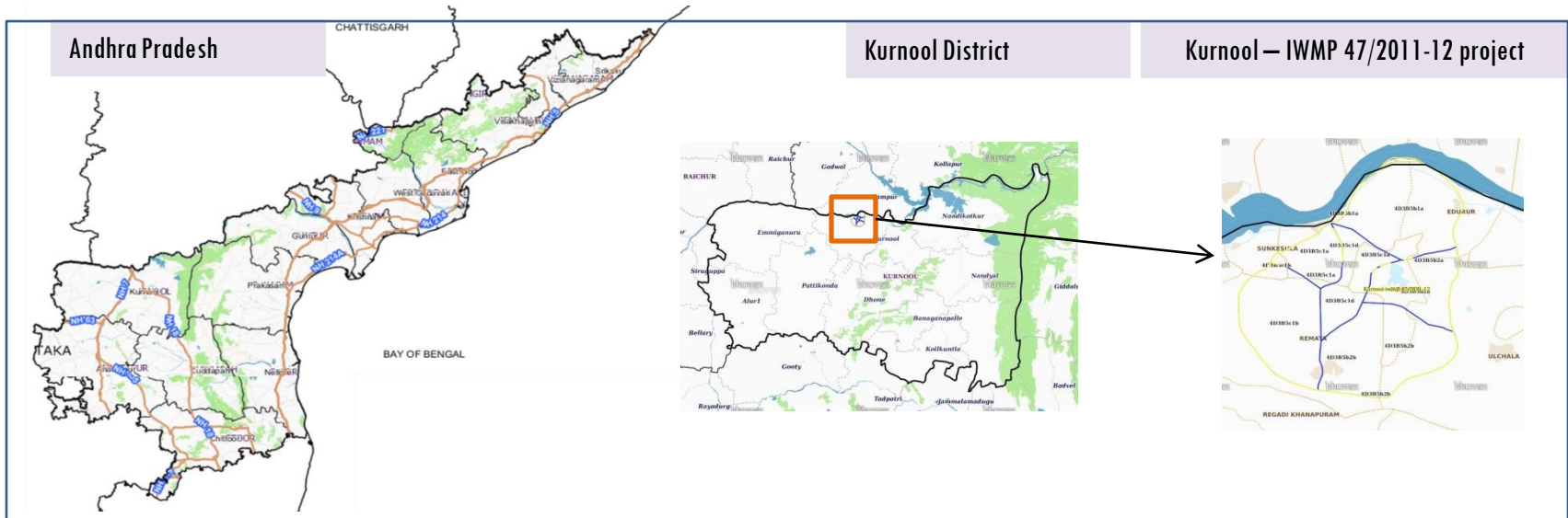
## EXECUTIVE SUMMARY

- Integrated Watersheds Management Project (IWMP) is a flagship programme of Department of Land Resources (DoLR), Ministry of Rural Development (MRD).
- National Remote Sensing Centre (NRSC), ISRO has designed and developed Bhuvan Geo-ICT Web portal tools namely - Srishti and Drishti for monitoring and evaluation of IWMP watersheds. It uses high spatial and temporal resolution sensors viz., Carto-1/2(2.5 m) , LISS-IV(5.8 m color).
- Current summary report gives details of Project - IWMP-47/2011-12, Kurnool District of Andhra Pradesh. The total geographical area of the project is **5,321** ha. It comprises of 6 micro watersheds.
- In the project area 483 Drishti photos were uploaded showing check dams/checks & plugins, Farm ponds, Livelihood measures and remaining showing others.
- Water bodies have shown an increased by 22 ha , which correspond to the other land use classes that have been converted into various water bodies in this period.
- Major percentage i.e. 87 % is covered by the agriculture, 8 % is covered by scrub land, 2 % is covered by water body and remaining by other land use classes.

# PROJECT : KURNOOL – IWMP-47/2011-12

## DISTRICT : KURNOOL , STATE : ANDHRA PRADESH

- The study area falls in Kurnool Mandal of Kurnool district of Andhra Pradesh state. The total geographical area of the project is **5,321** ha. It comprises of 6 micro watersheds. Location Map of the study area is shown in Figure below. Analysis is done for 2011-12 (T0) period (**Batch -1**) projects taking 2019-20 (T5) period satellite images



- The climate is tropical with temperatures ranging from 26 °C to 46 °C in the summer and 12 °C to 31 °C in the winter. The average annual rainfall is about 705 millimeters (28 in).
- The average annual rainfall of the district is 665.5mm, which ranges from nil rainfall in January and December to 139.6 mm in September. August and September are the wettest months. The mean seasonal rainfall distribution is 459.1mm in southwest monsoon (June September), 133.7mm in northeast monsoon ( Oct-Dec), 1.9 mm rainfall in Winter (Jan Feb) and 70.8 mm in summer (March–May).

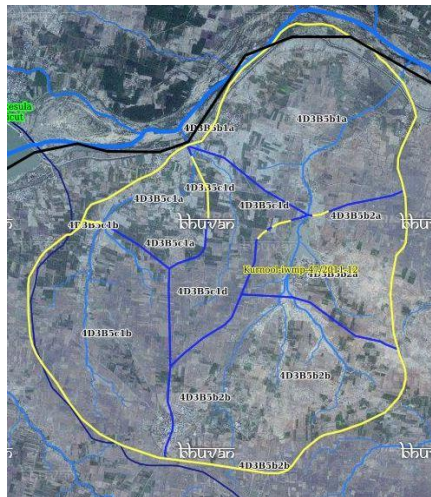
# Satellite Data and Ancillary Data

| Satellite data* | T0-A**  | T0-B**  | T5        |
|-----------------|---------|---------|-----------|
|                 | 2011-12 | 2011-12 | 2019-20   |
| LISS IV         | 2011-12 |         |           |
| SCENE 1         |         |         | 19-Feb-20 |
| SCENE2          |         |         |           |
| SCENE 3         |         |         |           |
| SCENE 4         |         |         |           |
| CARTO           | 2011-12 |         |           |
| SCENE 1         |         |         | 19-Feb-20 |
| SCENE2          |         |         |           |
| SCENE 3         |         |         |           |
| SCENE 4         |         |         |           |




## Ancillary Data

|   | Category                | Sub category | Status |
|---|-------------------------|--------------|--------|
| 1 | Thematic maps           |              |        |
|   | LULC ( 1: 10 000)       |              |        |
|   |                         | DRAIANGE     | YES    |
|   |                         | SETTLEMENT   | YES    |
|   |                         | ROADS/RAILS  | No     |
|   | LULC (1: 50 000)        |              |        |
|   |                         | 2005-06      |        |
|   |                         | 2008-09      |        |
| 2 | Activity Plan Maps      |              |        |
| 3 | Drishti Photographs     |              |        |
|   |                         | Total        | 483    |
| 4 | Detailed Project Report |              |        |

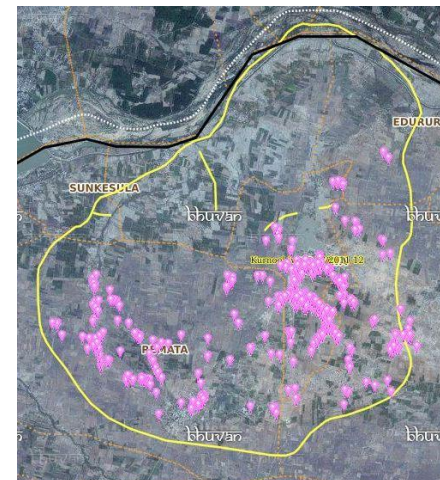
## Natural Color Composite overlaid with Project boundaries and high detail stream network



### Legend

-  Drainage (1:10000 Scale)
-  MWS Boundary
-  Project Boundary

## Natural Color Composite overlaid with Drishti Points



### Drishti Upload Status

## Classification of the Activities

| Sr. No | Activity  | Drishti Photo | Visible on satellite |
|--------|---|---------------|----------------------|
| 1      | Afforestation                                       | 0             | 0                    |
| 2      | Agriculture/Horticulture                            | 0             | 0                    |
| 3      | Blockplanting                                       | 0             | 0                    |
| 4      | Bund planting                                       | 0             | 0                    |
| 5      | Drainage Treatment                                  | 0             | 0                    |
| 6      | Farm ponds/Dug out pit                              | 1             | 1                    |
| 7      | Check dams (Civil work)                             | 0             | 0                    |
| 8      | Checks & plugins                                    | 101           | 95                   |
| 9      | Om (Other measurement)                              | 0             | 0                    |
| 10     | LM (Livelihood Measures)                            | 0             | 0                    |
| 11     | Nallah Bunds/Drainage treatment                     | 0             | 0                    |
| 12     | Percolation tanks / Ground water recharge structure | 0             | 0                    |
| 13     | Production System and Micro-Enterprises             | 0             | 0                    |
| 14     | Livelihood Activities                               | 0             | 0                    |
| 15     | Capacity Building Activities                        | 0             | 0                    |
| 16     | Entry Point Activity                                | 0             | 0                    |
| 17     | Others  | 417           | 387                  |
|        | <b>TOTAL</b>  | <b>519</b>    | <b>483</b>           |

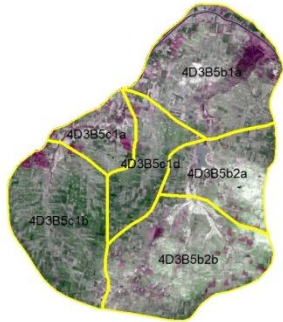
## MONITORING IN THE PROJECT AREA

### Site Wise Changes in the Project

- Impacts of the activities carried out are presented through combination of Drishti and Srishti captures.
- T0 is the baseline period before implementation (2011-12) and T5 is 2019-20 period for monitoring.
- Captures are also provided wherever changes are observed in satellite images, that may match expected activity related impact, even though they don't have Drishti report yet.

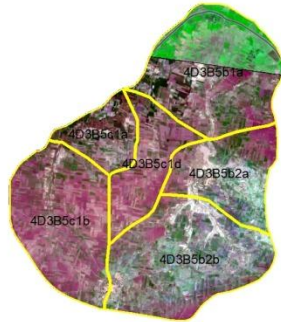
# Natural Color Composite

Natural Color Composite- 2011-12



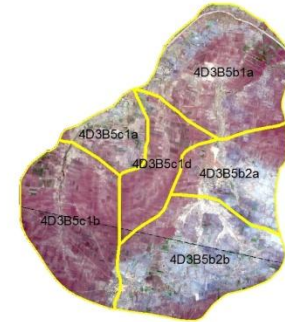
Source:Fusion data,NRSC

Natural Color Composite- 28 th October 2015



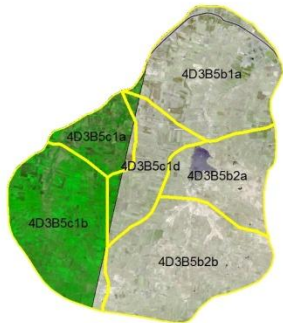
Source:NCC,NRSC

Natural Color Composite- 30th April 2017



Source:NCC,NRSC

Natural Color Composite-22nd November 2017



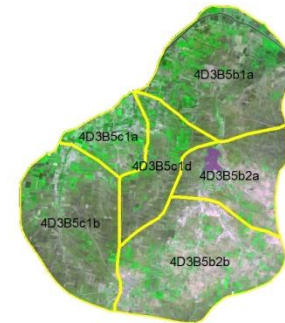
Source:LISS-IV,NRSC

Natural Color Composite-04th January 2019



Source:Sentinel-2

Natural Color Composite- 19th February 2020



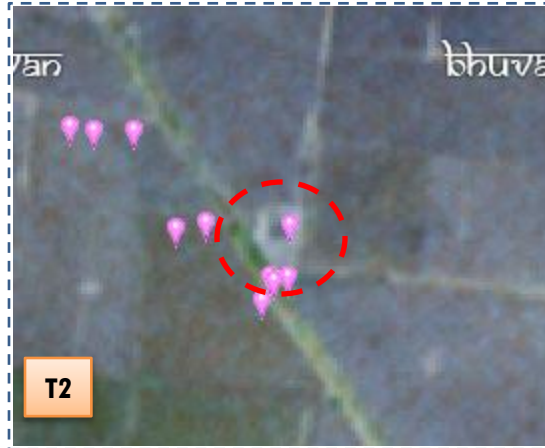
Source:LISS-IV,NRSC



Monitoring of activities in Kurnool Dt Andhra Pradesh. IWMP-47/2011-12



T1: 22 April 2015



T2: 30 April 2017

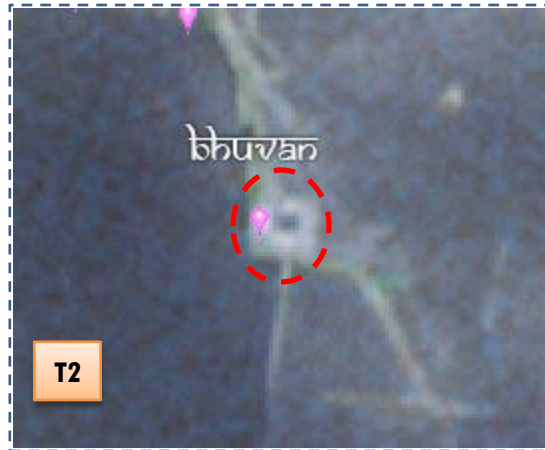


Drishti Sl no. 1668206 MWS :4D3B5c1b

Farm pond



T1: 22 April 2015



T2: 30 April 2017



Drishti Sl no. 1668217 MWS :4D3B5c1b

Farm pond

Monitoring of activities in Kurnool Dt Andhra Pradesh. IWMP-47/2011-12



T1

T1: 22 April 2015



T2

T2: 30 April 2017



Drishti Sl no. 1668239 MWS : 4D3B5c1b

Farm pond



T1

T1: 18 February 2015



T2

T2: 30 April 2017



Drishti Sl no. 1793900 MWS : 4D3B5b2b

Farm pond



Monitoring of activities in Kurnool Dt Andhra Pradesh. IWMP-47/2011-12

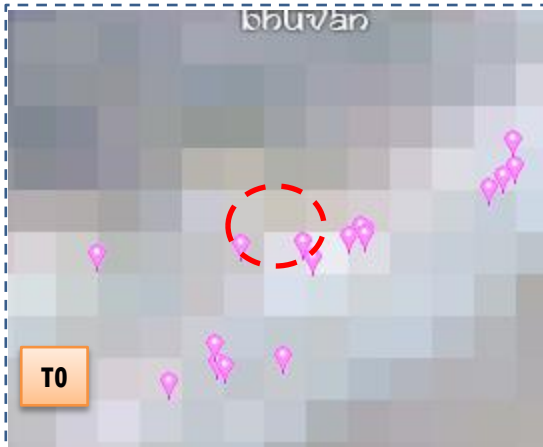


T0:2010-11

T1: 28 October 2015

Drishti Sl no. 141483- MWS :4D3B5c1b

Check dam



T0:2010-11

T1: 28 October 2015

Drishti Sl no. 2414836 MWS :4D3B5b2b

Farm pond

Monitoring of activities in Kurnool Dt Andhra Pradesh. IWMP-47/2011-12



T0

T0: 2010-11



T1

T1: 28 October 2015



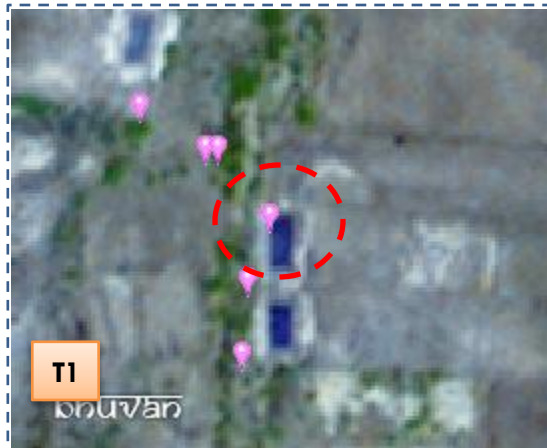
Drishti Sl no. 2553891- MWS : 4D3B5b2b

Farm pond



T0

T0: 2010-11



T1

T1: 28 October 2015



Drishti Sl no. 7006643-b MWS : 4D3B5c1

Farm pond

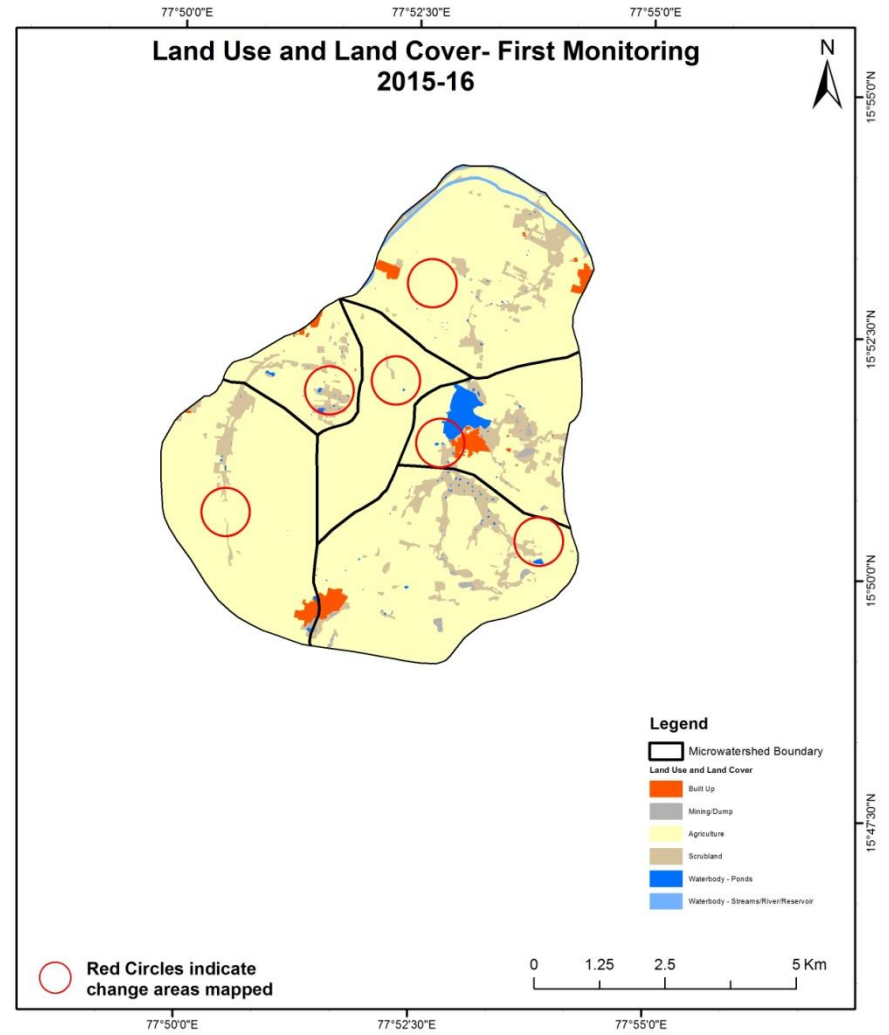
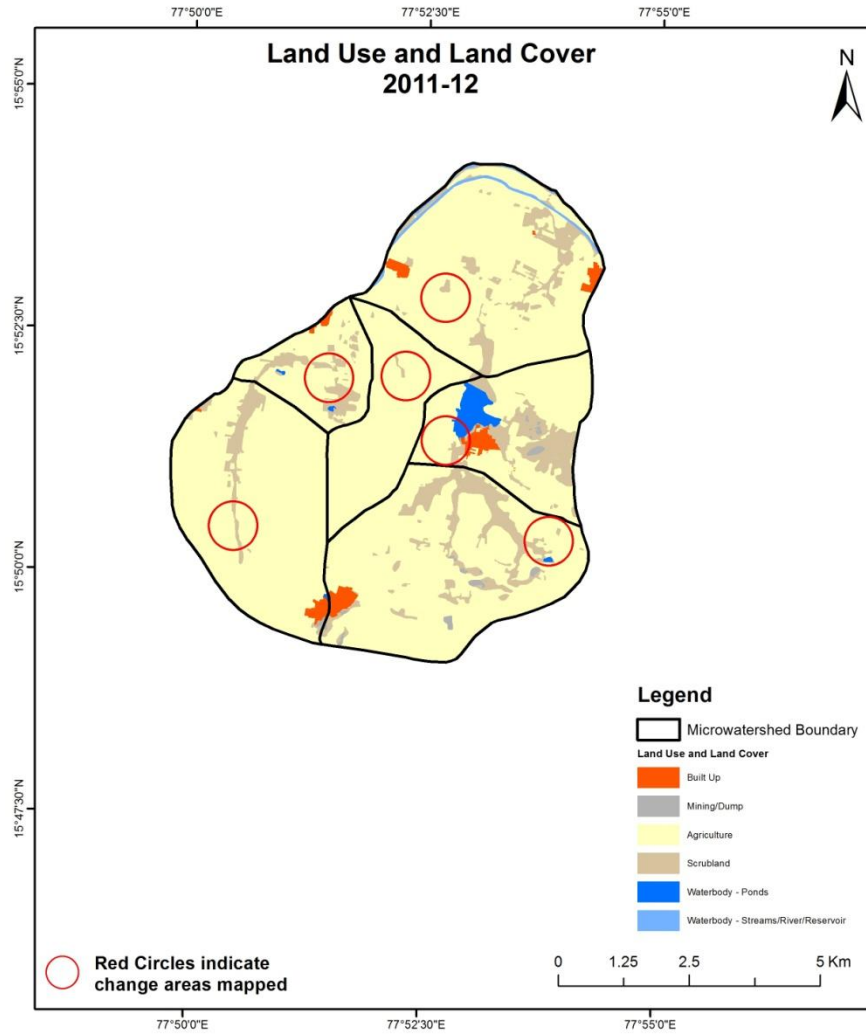
## MONITORING IN THE PROJECT AREA

### Land use and Land cover Changes in the Project

- Change in land use and land cover from T0 to T5 are analyzed in terms of built up, mining/dump, agriculture, plantation- horticulture, forest, barren rocky waterbody-streams/river/reservoir and waterbody -ponds.
- Captures are also provided wherever changes are observed in satellite images, that may match expected activity related impact, even though they don't have Drishti report yet.
- The result obtained for the period T0 to T5 are given in the change matrix table.
- In matrix table column represents the T0 (2011-12) and row represents the T5 (2019-20)

# Comparative assessment of Land Use and Land Cover for Pre and Post IWMP implementation (2011-12 to 2015-16)

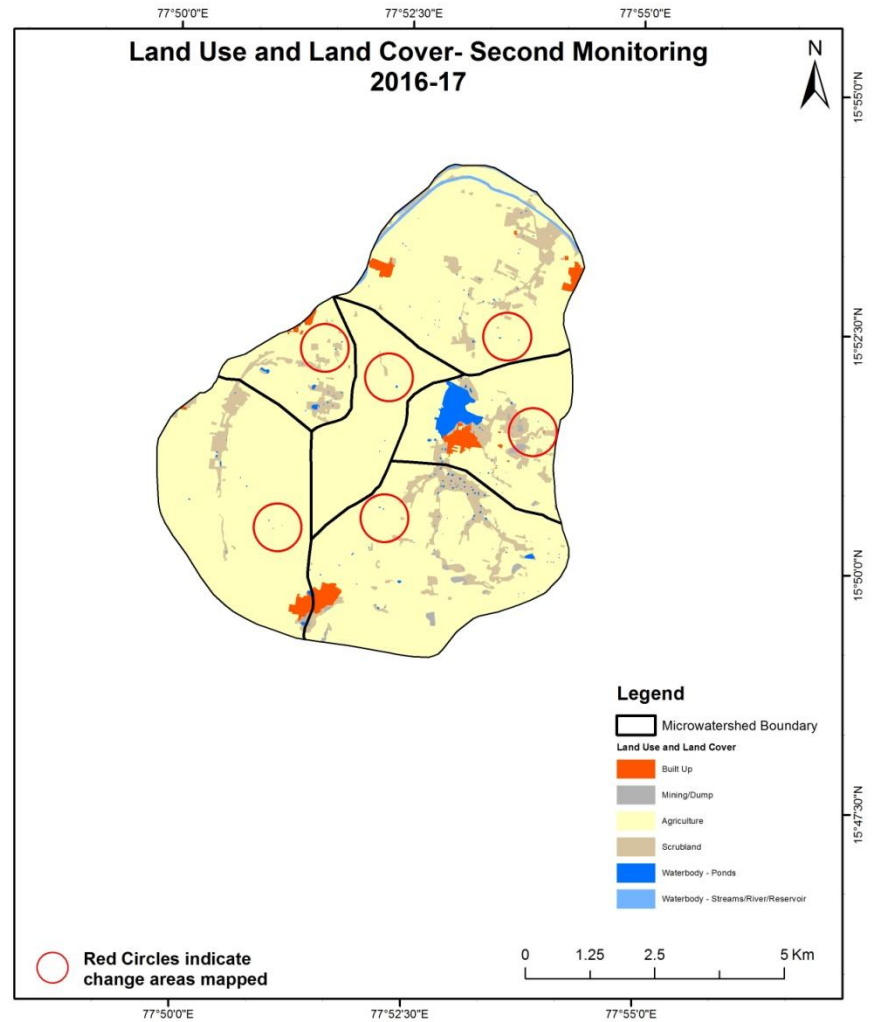
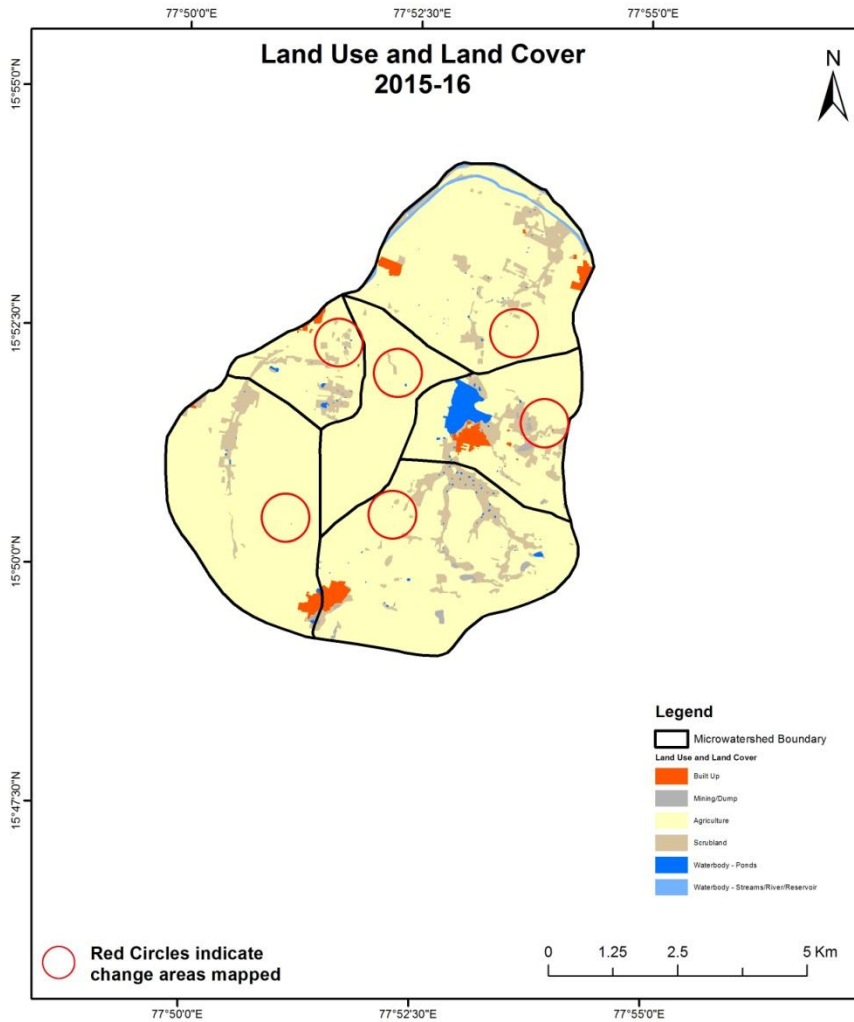
Scale: 1:10000





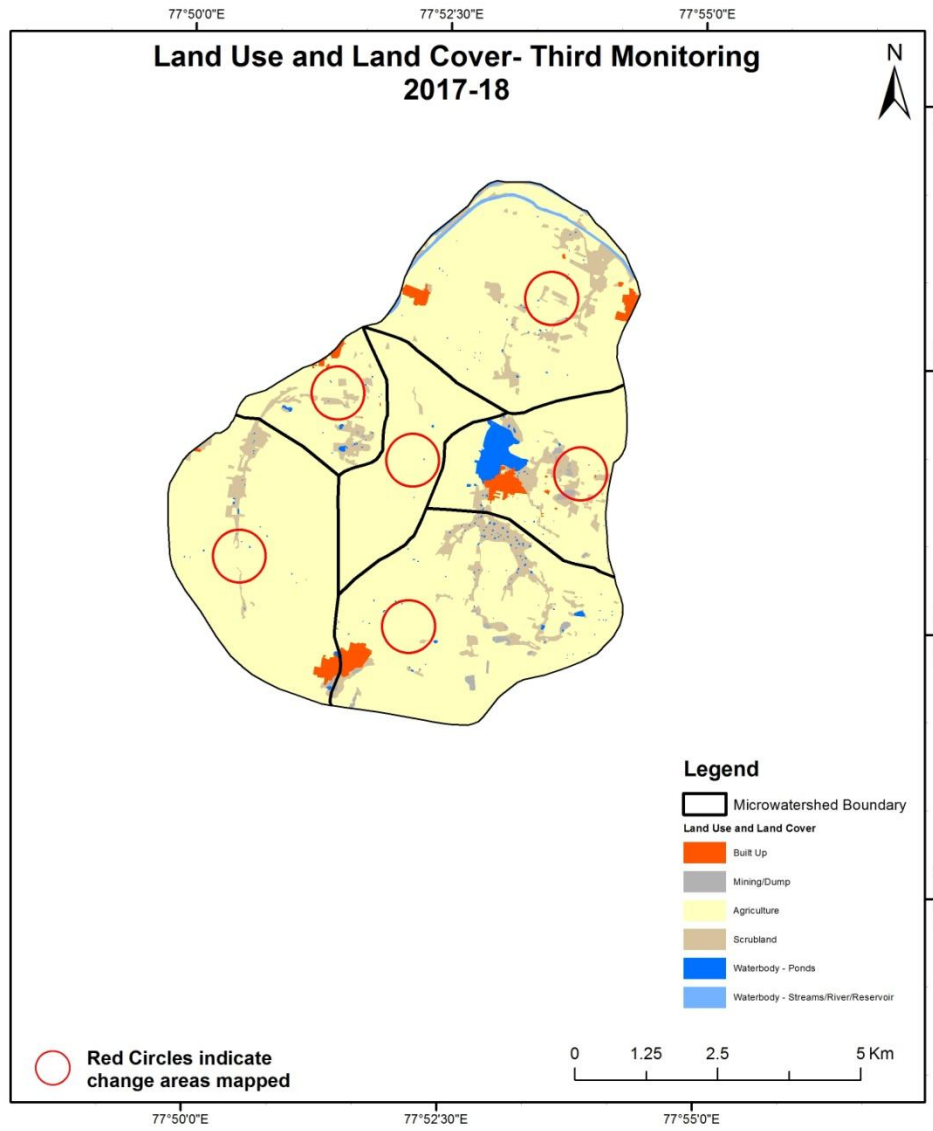
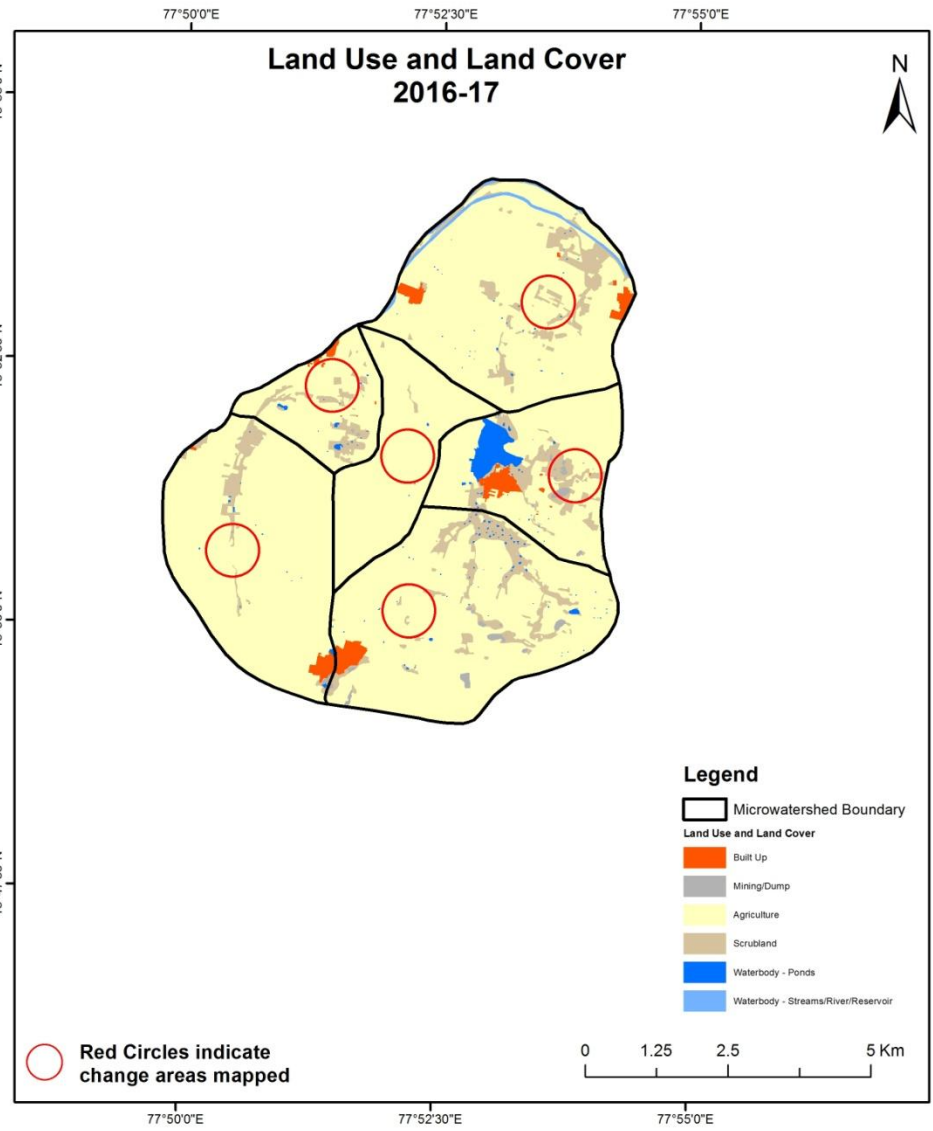
# Comparative assessment of Land Use and Land Cover for Pre and Post IWMP implementation (2015-16 to 2016-17)

Scale: 1:10000



# Comparative assessment of Land Use and Land Cover for Pre and Post IWMP implementation (2016-17 to 2017-18)

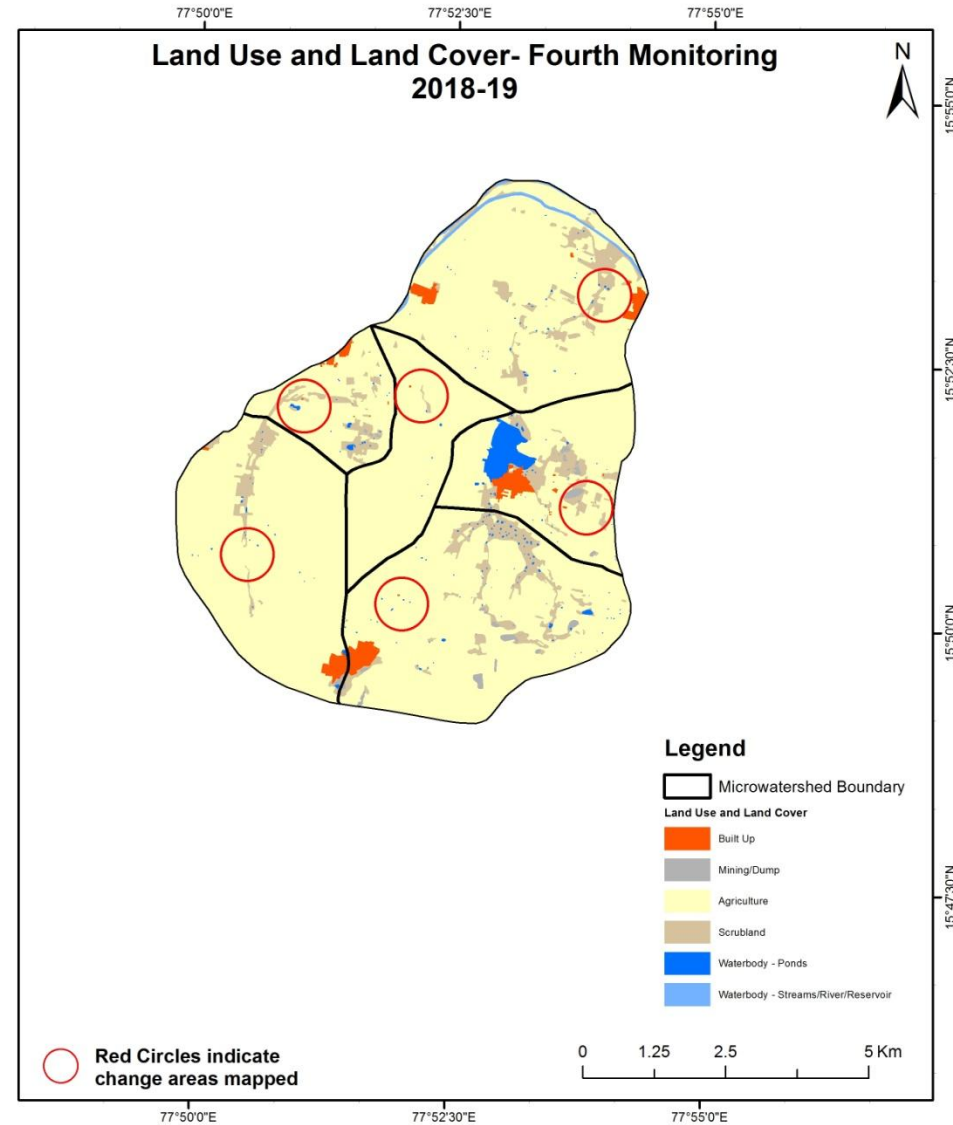
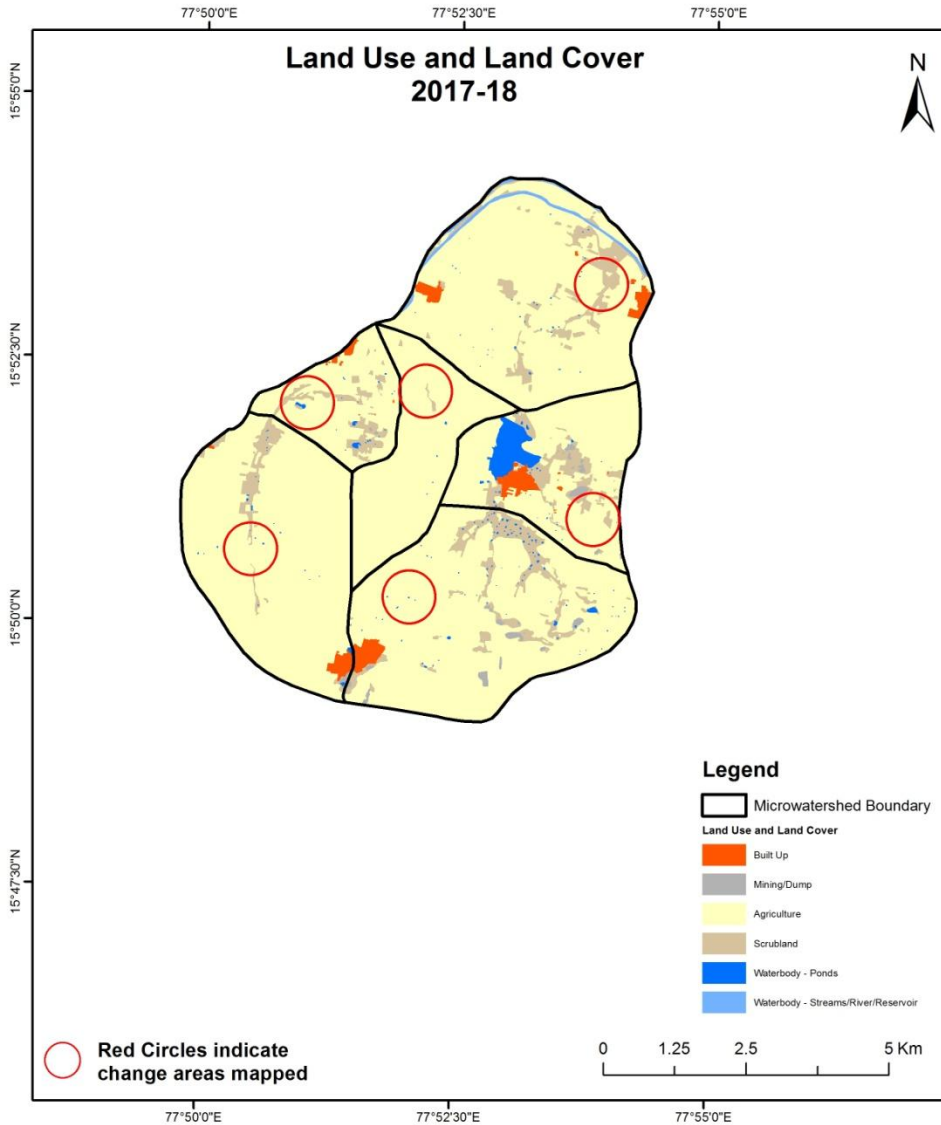
Scale: 1:10000





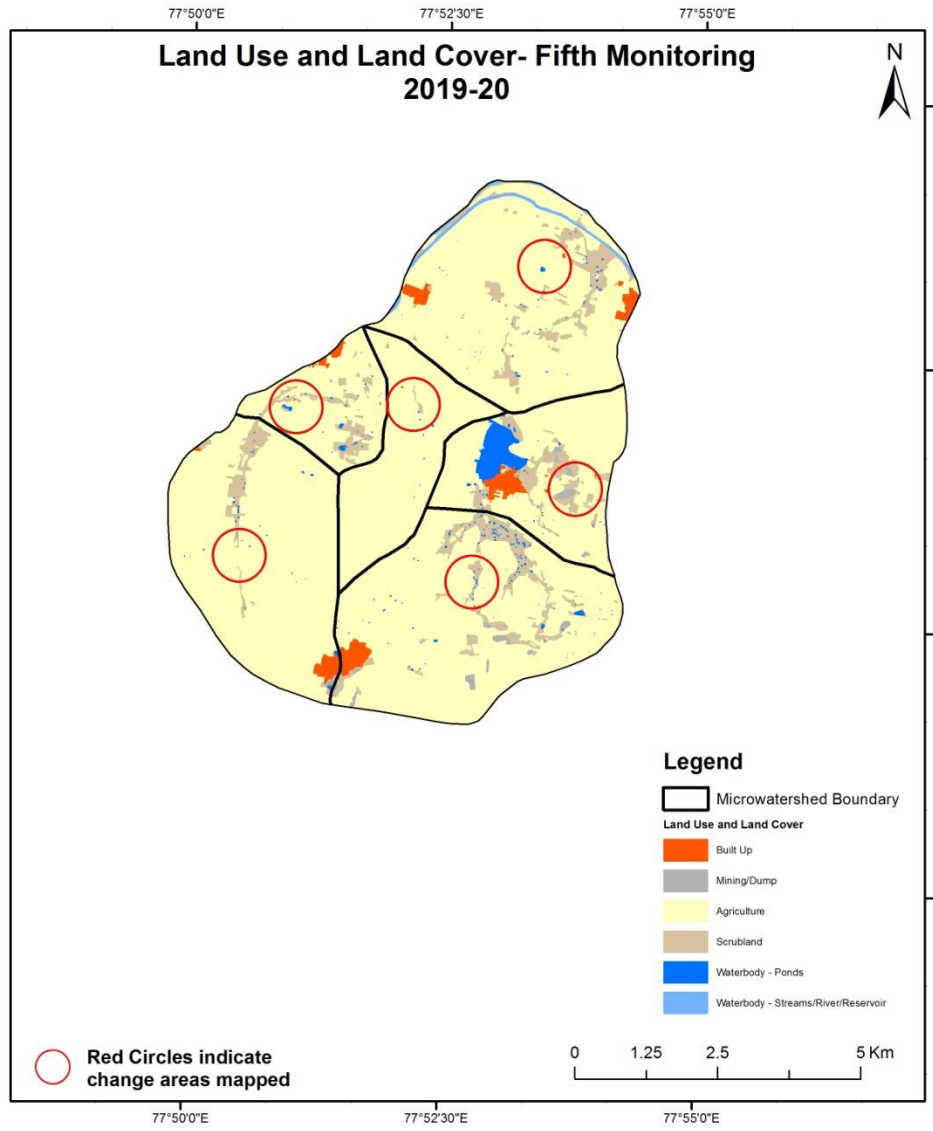
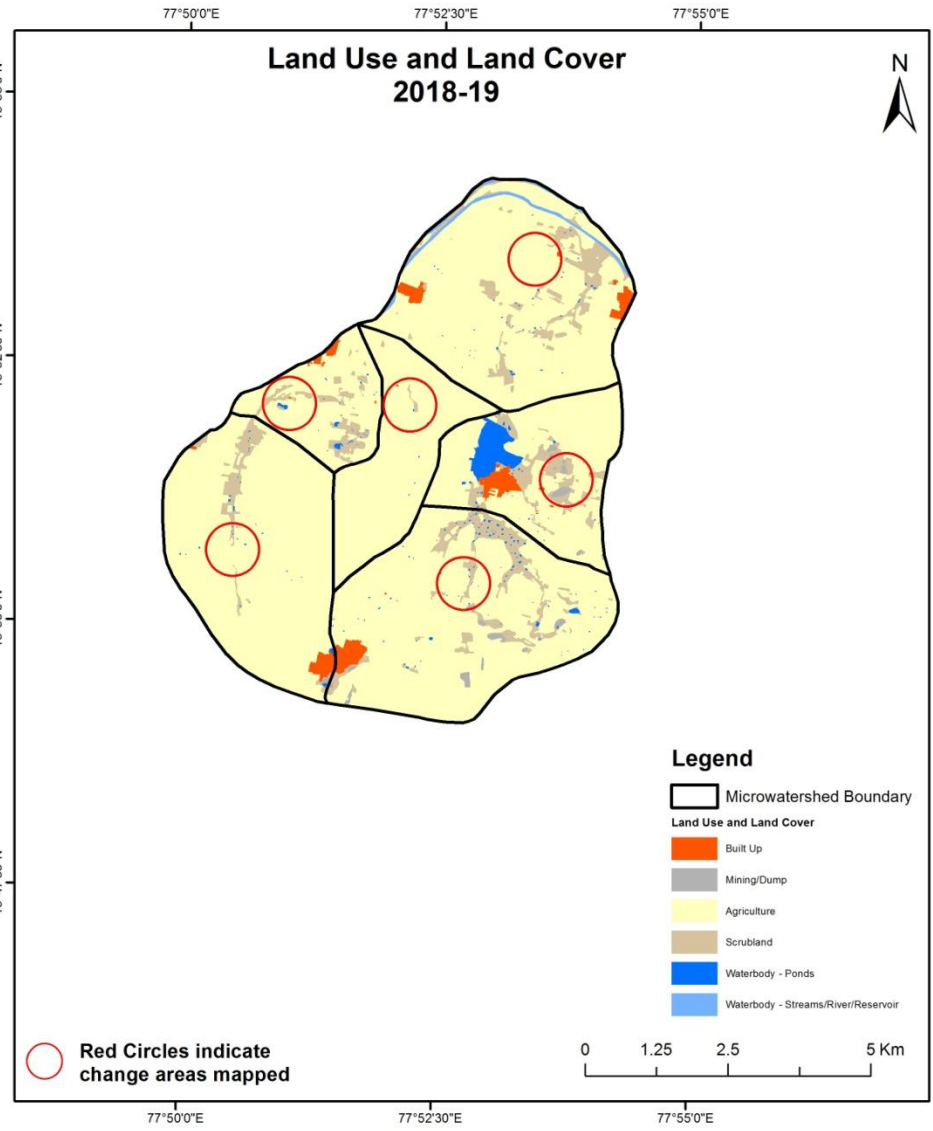
# Comparative assessment of Land Use and Land Cover for Pre and Post IWMP implementation (2017-18 to 2018-19)

Scale: 1:10000



# Comparative assessment of Land Use and Land Cover for Pre and Post IWMP implementation (2018-19 to 2019-20)

Scale: 1:10000

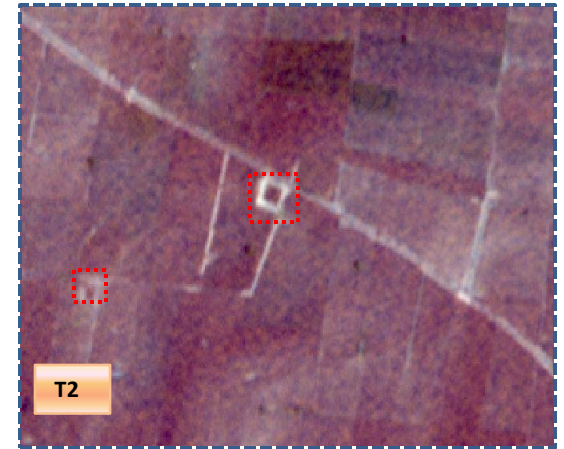


## Land Use and Land Cover changes for Pre and Post treatment dates

Agriculture to water body



T1: 2015-16(77°50'9.166"E 15°50'42.043"N )



T2: 30 April 2017

Agriculture to water body



T1: 2015-16 (77°53'41.31"E 15°52'24.69"N )



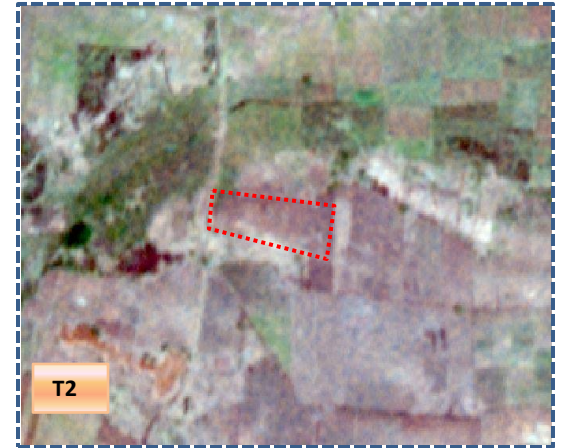
T2: 30 April 2017

## Land Use and Land Cover changes for Pre and Post treatment dates

Scrub to Agriculture



T1: 2015-16(77°51'2.873"E 15°52'9.376"N )

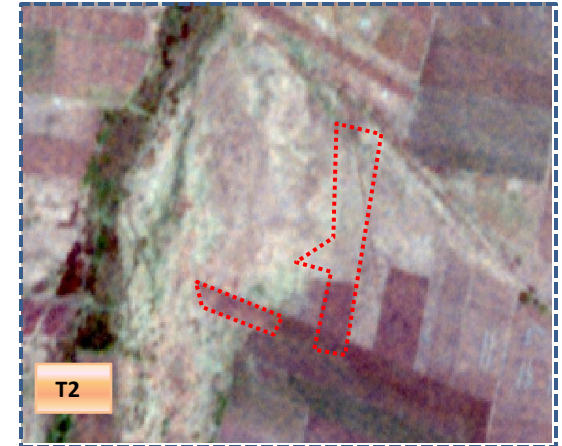


T2: 30 April 2017

Scrub to Agriculture



T1: 2015-16(77°50'46.007"E 15°51'43.998"N )

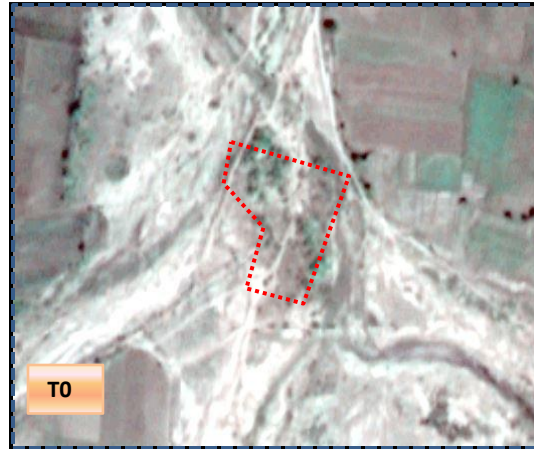


T2: 30 April 2017



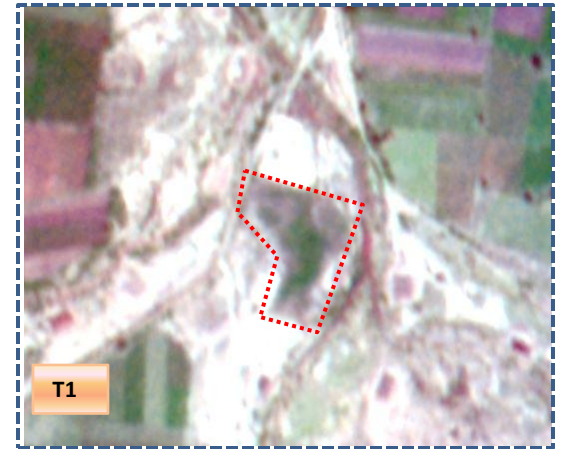
## Land Use and Land Cover changes for Pre and Post treatment dates

### Scrub to Agriculture



T0

T0: 2011-12 (77°52'55.319"E 15°51'1.801"N )



T1

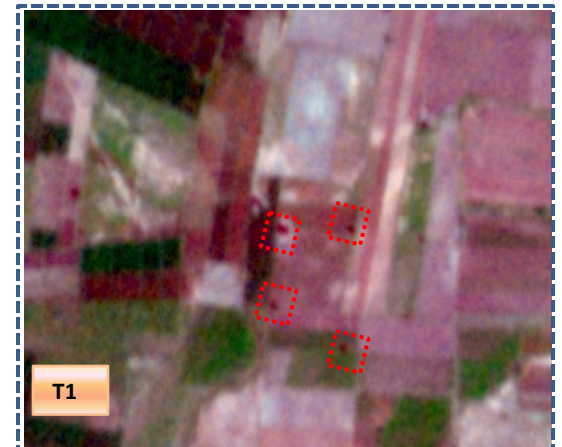
T1: 28 October 2015

### Agriculture to water body



T0

T0: 2011-12 (77°52'46.697"E 15°52'36.426"N )



T1

T1: 28 October 2015

## Land Use and Land Cover changes for Pre and Post treatment dates

Scrub to Agriculture

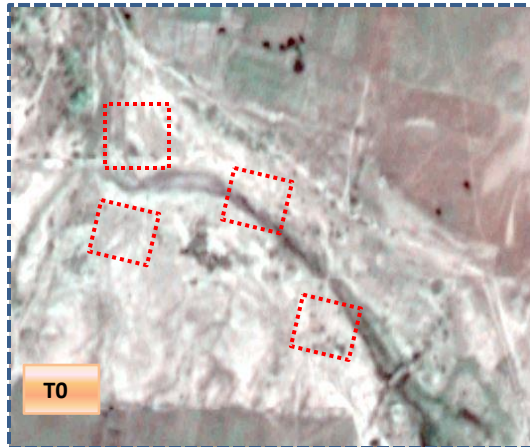


T0: 2011-12 (77°52'20.609"E 15°50'38.955"N )



T1: 28 October 2015

Scrub to water body



T0: 2011-12 (77°52'58.526"E 15°50'56.081"N )



T1: 28 October 2015

**Table showing change matrix depicting Land cover transitions during study period-2011-12 to 2015-16**

| Land cover                          | Monitoring period (T1) |                 |                |                            |        |                      |                 |               |                             |                     | Units in Hectares |  |                |
|-------------------------------------|------------------------|-----------------|----------------|----------------------------|--------|----------------------|-----------------|---------------|-----------------------------|---------------------|-------------------|--|----------------|
|                                     | Built up               | Mining/<br>dump | Agriculture    | Plantation<br>Horticulture | Forest | Forest<br>Plantation | Barren<br>Rocky | Scrub         | Waterbody-<br>Streams/River | Water body<br>Ponds | Grand Total       |  |                |
| T0                                  |                        |                 |                |                            |        |                      |                 |               |                             |                     |                   |  |                |
| <b>Built up</b>                     | 86.87                  |                 |                |                            |        |                      |                 |               |                             |                     |                   |  | <b>86.87</b>   |
| <b>Mining/dump</b>                  |                        | 22.83           |                |                            |        |                      |                 |               |                             |                     |                   |  | <b>22.83</b>   |
| <b>Agriculture</b>                  | 2.29                   | 0.24            | 4495.11        |                            |        |                      |                 |               |                             |                     | 2.95              |  | <b>4500.60</b> |
| <b>Plantation<br/>Horticulture</b>  |                        |                 |                |                            |        |                      |                 |               |                             |                     |                   |  |                |
| <b>Forest</b>                       |                        |                 |                |                            |        |                      |                 |               |                             |                     |                   |  |                |
| <b>Forest<br/>Plantation</b>        |                        |                 |                |                            |        |                      |                 |               |                             |                     |                   |  |                |
| <b>Barren Rocky</b>                 |                        |                 |                |                            |        |                      |                 |               |                             |                     |                   |  |                |
| <b>Scrub</b>                        | 1.37                   | 1.53            | 103.86         |                            |        |                      |                 | 502.57        |                             |                     | 6.19              |  | <b>615.52</b>  |
| <b>Waterbody-<br/>Streams/River</b> |                        |                 |                |                            |        |                      |                 |               | 41.91                       |                     |                   |  | <b>41.91</b>   |
| <b>Waterbody –<br/>Ponds</b>        |                        |                 | 0.23           |                            |        |                      |                 |               |                             |                     | 53.95             |  | <b>54.18</b>   |
| <b>Grand Total</b>                  | <b>90.54</b>           | <b>24.60</b>    | <b>4599.21</b> |                            |        |                      |                 | <b>502.57</b> | <b>41.91</b>                |                     | <b>63.10</b>      |  | <b>5321.92</b> |

- In matrix table diagonal elements represent the both periods in the same class and off diagonal elements represents change in between the classes.
- In T0 05 ha of the agriculture area has decreased and it is converted into Built-up, mining /dump and water body in T1.
- In T1 104 ha of the agriculture area has increased from scrubland and water body of T0.
- The additional agriculture are coming from waterbody in T1 represents seasonal agriculture.

**Table showing change matrix depicting Land cover transitions during study period-2015-16 to 2016-17**

| Land cover                          | Monitoring period (T2) |                 |                |                            |        |                      |                 |               |                             |                     | Units in Hectares |  |
|-------------------------------------|------------------------|-----------------|----------------|----------------------------|--------|----------------------|-----------------|---------------|-----------------------------|---------------------|-------------------|--|
|                                     | Built up               | Mining/<br>dump | Agriculture    | Plantation<br>Horticulture | Forest | Forest<br>Plantation | Barren<br>Rocky | Scrub         | Waterbody-<br>Streams/River | Water body<br>Ponds | Grand Total       |  |
| <b>T1</b>                           |                        |                 |                |                            |        |                      |                 |               |                             |                     |                   |  |
| <b>Built up</b>                     | 90.54                  |                 |                |                            |        |                      |                 |               |                             |                     | <b>90.54</b>      |  |
| <b>Mining/dump</b>                  |                        | 24.60           |                |                            |        |                      |                 |               |                             |                     | <b>24.60</b>      |  |
| <b>Agriculture</b>                  | 0.73                   | 0.16            | 4596.92        |                            |        |                      |                 |               |                             | 1.40                | <b>4599.21</b>    |  |
| <b>Plantation<br/>Horticulture</b>  |                        |                 |                |                            |        |                      |                 |               |                             |                     |                   |  |
| <b>Forest</b>                       |                        |                 |                |                            |        |                      |                 |               |                             |                     |                   |  |
| <b>Forest<br/>Plantation</b>        |                        |                 |                |                            |        |                      |                 |               |                             |                     |                   |  |
| <b>Barren Rocky</b>                 |                        |                 |                |                            |        |                      |                 |               |                             |                     |                   |  |
| <b>Scrub</b>                        | 1.41                   | 0.45            | 39.50          |                            |        |                      |                 | 460.39        |                             | 0.82                | <b>502.57</b>     |  |
| <b>Waterbody-<br/>Streams/River</b> |                        |                 |                |                            |        |                      |                 |               | 41.91                       |                     | <b>41.91</b>      |  |
| <b>Waterbody –<br/>Ponds</b>        |                        |                 |                |                            |        |                      |                 |               |                             | 63.10               | <b>63.10</b>      |  |
| <b>Grand Total</b>                  | <b>92.67</b>           | <b>25.22</b>    | <b>4636.42</b> |                            |        |                      |                 | <b>460.39</b> | <b>41.91</b>                | <b>65.31</b>        | <b>5321.92</b>    |  |

- In matrix table diagonal elements represent the both periods in the same class and off diagonal elements represents change in between the classes.
- In T1 02 ha of the agriculture area has decreased and it is converted into Built-up, mining/dump and water body in T2.
- In T2 39 ha of the agriculture area has increased from scrubland area of T1. The additional agriculture are coming from waterbody in T2 represents seasonal agriculture.



**Table showing change matrix depicting Land cover transitions during study period-2016-17 to 2017-18**

| Land cover                          | Monitoring period (T3) |                 |                |                            |        |                      |                 |               |                             |                     | Units in Hectares |  |
|-------------------------------------|------------------------|-----------------|----------------|----------------------------|--------|----------------------|-----------------|---------------|-----------------------------|---------------------|-------------------|--|
|                                     | Built up               | Mining/<br>dump | Agriculture    | Plantation<br>Horticulture | Forest | Forest<br>Plantation | Barren<br>Rocky | Scrub         | Waterbody-<br>Streams/River | Water body<br>Ponds | Grand Total       |  |
| <b>Built up</b>                     | 92.67                  |                 |                |                            |        |                      |                 |               |                             |                     | <b>92.67</b>      |  |
| <b>Mining/dump</b>                  |                        | 25.11           |                |                            |        |                      |                 |               |                             | 0.11                | <b>25.22</b>      |  |
| <b>Agriculture</b>                  | 0.36                   | 0.90            | 4634.27        |                            |        |                      |                 |               |                             | 0.88                | <b>4636.42</b>    |  |
| <b>Plantation<br/>Horticulture</b>  |                        |                 |                |                            |        |                      |                 |               |                             |                     |                   |  |
| <b>Forest</b>                       |                        |                 |                |                            |        |                      |                 |               |                             |                     |                   |  |
| <b>Forest<br/>Plantation</b>        |                        |                 |                |                            |        |                      |                 |               |                             |                     |                   |  |
| <b>Barren Rocky</b>                 |                        |                 |                |                            |        |                      |                 |               |                             |                     |                   |  |
| <b>Scrub</b>                        | 0.03                   | 1.44            | 28.66          |                            |        |                      |                 | 426.49        |                             | 3.78                | <b>460.39</b>     |  |
| <b>Waterbody-<br/>Streams/River</b> |                        |                 |                |                            |        |                      |                 |               | 41.91                       |                     | <b>41.91</b>      |  |
| <b>Waterbody –<br/>Ponds</b>        |                        |                 |                |                            |        |                      |                 |               |                             | 65.31               | <b>65.31</b>      |  |
| <b>Grand Total</b>                  | <b>93.06</b>           | <b>27.45</b>    | <b>4662.93</b> |                            |        |                      |                 | <b>426.49</b> | <b>41.91</b>                | <b>70.08</b>        | <b>5321.92</b>    |  |

- In matrix table diagonal elements represent the both periods in the same class and off diagonal elements represents change in between the classes.
- In T2 02 ha of the agriculture area has decreased and it is converted into Built-up, mining/dump and water body in T3.
- In T3 28 ha of the agriculture area has increased from scrubland of T2.
- The additional agriculture are coming from waterbody in T3 represents seasonal agriculture.

**Table showing change matrix depicting Land cover transitions during study period-2017-18 to 2018-19**

| Land cover                          | Monitoring period (T4) |                 |                |                            |        |                      |                 |               |                             |                     | Units in Hectares |  |                |
|-------------------------------------|------------------------|-----------------|----------------|----------------------------|--------|----------------------|-----------------|---------------|-----------------------------|---------------------|-------------------|--|----------------|
|                                     | Built up               | Mining/<br>dump | Agriculture    | Plantation<br>Horticulture | Forest | Forest<br>Plantation | Barren<br>Rocky | Scrub         | Waterbody-<br>Streams/River | Water body<br>Ponds | Grand Total       |  |                |
| <b>T3</b>                           |                        |                 |                |                            |        |                      |                 |               |                             |                     |                   |  |                |
| <b>Built up</b>                     | 93.06                  |                 |                |                            |        |                      |                 |               |                             |                     |                   |  | <b>93.06</b>   |
| <b>Mining/dump</b>                  |                        | 27.45           |                |                            |        |                      |                 |               |                             |                     |                   |  | <b>27.45</b>   |
| <b>Agriculture</b>                  | 1.98                   |                 | 4660.73        |                            |        |                      |                 |               |                             |                     | 0.22              |  | <b>4662.93</b> |
| <b>Plantation<br/>Horticulture</b>  |                        |                 |                |                            |        |                      |                 |               |                             |                     |                   |  |                |
| <b>Forest</b>                       |                        |                 |                |                            |        |                      |                 |               |                             |                     |                   |  |                |
| <b>Forest<br/>Plantation</b>        |                        |                 |                |                            |        |                      |                 |               |                             |                     |                   |  |                |
| <b>Barren Rocky</b>                 |                        |                 |                |                            |        |                      |                 |               |                             |                     |                   |  |                |
| <b>Scrub</b>                        | 0.53                   | 0.47            | 1.47           |                            |        |                      |                 | 423.17        |                             |                     | 0.84              |  | <b>426.49</b>  |
| <b>Waterbody-<br/>Streams/River</b> |                        |                 |                |                            |        |                      |                 |               | 41.91                       |                     |                   |  | <b>41.91</b>   |
| <b>Waterbody –<br/>Ponds</b>        |                        |                 | 0.29           |                            |        |                      |                 |               |                             |                     | 69.80             |  | <b>70.08</b>   |
| <b>Grand Total</b>                  | <b>95.58</b>           | <b>27.92</b>    | <b>4662.49</b> |                            |        |                      |                 | <b>423.17</b> | <b>41.91</b>                |                     | <b>70.86</b>      |  | <b>5321.92</b> |

- In matrix table diagonal elements represent the both periods in the same class and off diagonal elements represents change in between the classes.
- In T3 2.2 ha of the agriculture area has decreased and it is converted into Built-up and water body in T4.
- In T4 1.7 ha of the agriculture area has increased from scrubland and water body of T3.
- The additional agriculture are coming from waterbody in T4 represents seasonal agriculture.

**Table showing change matrix depicting Land cover transitions during study period-2018-19 to 2019-20**

| Land cover                          | Monitoring period (T5) |                 |                |                            |        |                      |                 |               |                             |                     | Units in Hectares |  |                |
|-------------------------------------|------------------------|-----------------|----------------|----------------------------|--------|----------------------|-----------------|---------------|-----------------------------|---------------------|-------------------|--|----------------|
|                                     | Built up               | Mining/<br>dump | Agriculture    | Plantation<br>Horticulture | Forest | Forest<br>Plantation | Barren<br>Rocky | Scrub         | Waterbody-<br>Streams/River | Water body<br>Ponds | Grand Total       |  |                |
| <b>T4</b>                           |                        |                 |                |                            |        |                      |                 |               |                             |                     |                   |  |                |
| <b>Built up</b>                     | 95.58                  |                 |                |                            |        |                      |                 |               |                             |                     |                   |  | <b>95.58</b>   |
| <b>Mining/dump</b>                  |                        | 27.92           |                |                            |        |                      |                 |               |                             |                     |                   |  | <b>27.92</b>   |
| <b>Agriculture</b>                  | 0.94                   |                 | 4659.26        |                            |        |                      |                 |               |                             |                     | 2.29              |  | <b>4662.49</b> |
| <b>Plantation<br/>Horticulture</b>  |                        |                 |                |                            |        |                      |                 |               |                             |                     |                   |  |                |
| <b>Forest</b>                       |                        |                 |                |                            |        |                      |                 |               |                             |                     |                   |  |                |
| <b>Forest<br/>Plantation</b>        |                        |                 |                |                            |        |                      |                 |               |                             |                     |                   |  |                |
| <b>Barren Rocky</b>                 |                        |                 |                |                            |        |                      |                 |               |                             |                     |                   |  |                |
| <b>Scrub</b>                        | 0.21                   |                 | 4.81           |                            |        |                      |                 | 414.19        |                             |                     | 3.96              |  | <b>423.17</b>  |
| <b>Waterbody-<br/>Streams/River</b> |                        |                 |                |                            |        |                      |                 |               | 41.91                       |                     |                   |  | <b>41.91</b>   |
| <b>Waterbody –<br/>Ponds</b>        |                        |                 |                |                            |        |                      |                 |               |                             |                     | 70.86             |  | <b>70.86</b>   |
| <b>Grand Total</b>                  | <b>96.72</b>           | <b>27.92</b>    | <b>4664.07</b> |                            |        |                      |                 | <b>414.19</b> | <b>41.91</b>                |                     | <b>77.11</b>      |  | <b>5321.92</b> |

- In matrix table diagonal elements represent the both periods in the same class and off diagonal elements represents change in between the classes.
- In T4 3.2 ha of the agriculture area has decreased and it is converted into Built-up and water body in T5.
- In T5 4.8 ha of the agriculture area has increased from scrubland of T4.
- The additional agriculture are coming from waterbody in T5 represents seasonal agriculture.

# Conclusion

1. DPR of the project is uploaded on to Bhuvan Portal.
2. The LULC shows that there is an increase in Crop land, Built up area, Reservoir / Tanks & decrease in Scrubland as presented in the change matrix for different years.
3. There is an increase of 22 Hectares in Reservoir / Tanks area as compared between baseline LU/LC data 2011-12 (T0) & 2019-20 (T5) years.
4. There is an increase of 98, 37, 26 & 1.5 Hectares From T0 to T1, T1-T2, T2-T3 & T4-T5 respectively and overall increase of 163 Hectares in Crop land area as compared between baseline LU/LC data 2011-12 (T0) & 2019-20 (T5) years.
5. There is a decrease of 201 Hectares in Scrubland area as compared between 2011-12 (T0) & 2019-20 (T5) years.
6. Farm ponds (1) is visible on IWMP Bhuvan Srishti portal out of Bhuvan Drishti photo of Farm ponds (1) verified from the portal.