

MONITORING OF IWMP WATERSHED PROJECTS USING GEO-INFORMATION

SUMMARY REPORT

KURNOOL -27/2010-11
Andhra Pradesh

Submitted to NRSC, Balanagar, Hyderabad
July-2021

T 0 - T 1 - T 2 - T 3 - T 4 - T 5



AGRICULTURE & SOIL
DIVISION
Andhra Pradesh Space
Applications Centre (APSAC)
ITE&C Department Govt. of
Andhra Pradesh



RURAL DEVELOPMENT AND
WATERSHED MONITORING
DIVISION
Land Resources and Land Use
Mapping and Monitoring Group,
Remote Sensing Application Area,
National Remote Sensing Centre, ISRO



DEPARTMENT OF LAND
RESOURCES
Ministry of Rural Development
Government of India

C O N T E N T S

- **EXECUTIVE SUMMARY**

01. STUDY AREA
02. SATELLITE & ANCILLARY DATA INCLUDING DRISHTI STATUS
03. MONITORING IN THE PROJECT AREA : Site wise changes in the project
04. CONCLUSIONS

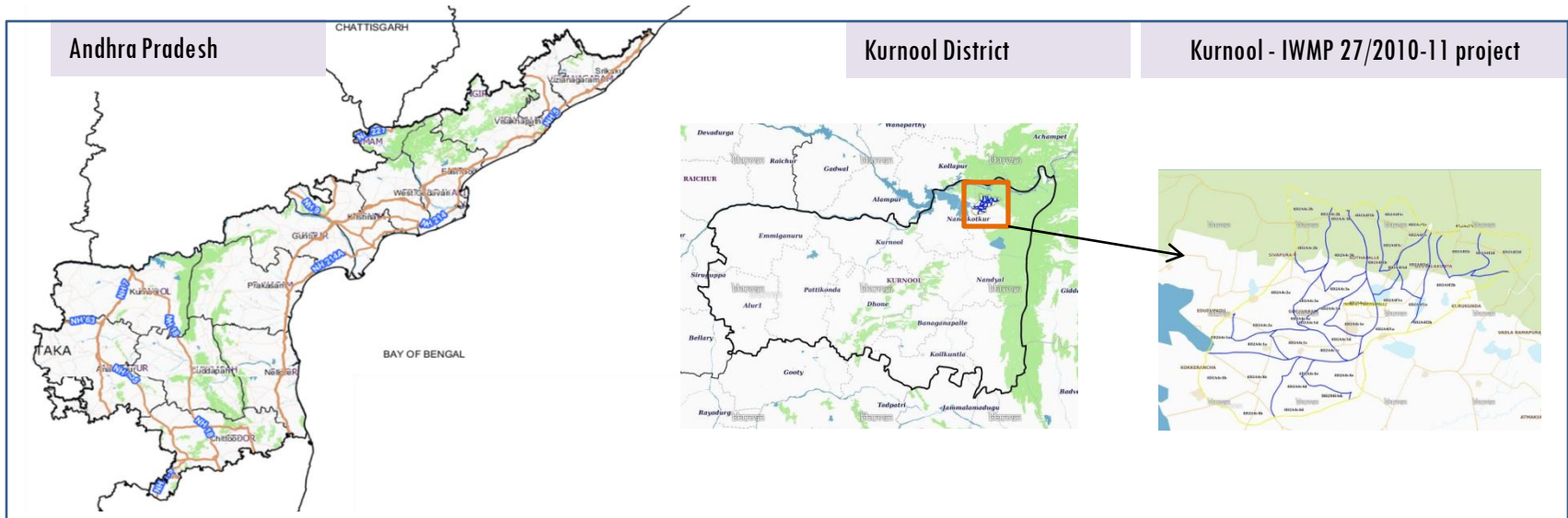
E X E C U T I V E S U M M A R Y

- Integrated Watersheds Management Project (IWMP) is a flagship programme of Department of Land Resources (DoLR), Ministry of Rural Development (MRD).
- National Remote Sensing Centre (NRSC), ISRO has designed and developed Bhuvan Geo-ICT Web portal tools namely - Srishti and Drishti for monitoring and evaluation of IWMP watersheds. It uses high spatial and temporal resolution sensors viz., Carto-1/2(2.5 m) , LISS-IV(5.8 m color).
- Current summary report gives details of Project - IWMP-27/2010-11, Kurnool District of Andhra Pradesh. The total geographical area of the project is 11,371.13 ha. It comprises of 18 micro watersheds.
- In the project area 315 Drishti photos were uploaded showing 20 check dams/checks & plugins, 175 Farm ponds, 3 Livelihood measures and remaining showing others.
- Major percentage i.e. 59.9% is covered by the agriculture, 33.8 % is covered by forest, 3.4 % is covered by water body and remaining by other land use classes.

PROJECT : KURNOOL - IWMP-27/2010-11

DISTRICT : KURNOOL , STATE : ANDHRA PRADESH

- The study area falls in Kothapalli Mandal of Kurnool district of Andhra Pradesh state. The total geographical area of the project is 11,371.13 ha. It comprises of 18 micro watersheds. Location Map of the study area is shown in Figure below. Analysis is done for 2010-11 (T0) period (*Batch -1*) projects taking 2018-19 (T5) period satellite images



- The climate is tropical with temperatures ranging from 26 °C to 46 °C in the summer and 12 °C to 31 °C in the winter. The average annual rainfall is about 705 millimeters (28 in).
- The average annual rainfall of the district is 665.5mm, which ranges from nil rainfall in January and December to 139.6 mm in September. August and September are the wettest months. The mean seasonal rainfall distribution is 459.1mm in southwest monsoon (June September), 133.7mm in northeast monsoon (Oct-Dec), 1.9 mm rainfall in Winter (Jan Feb) and 70.8 mm in summer (March-May).

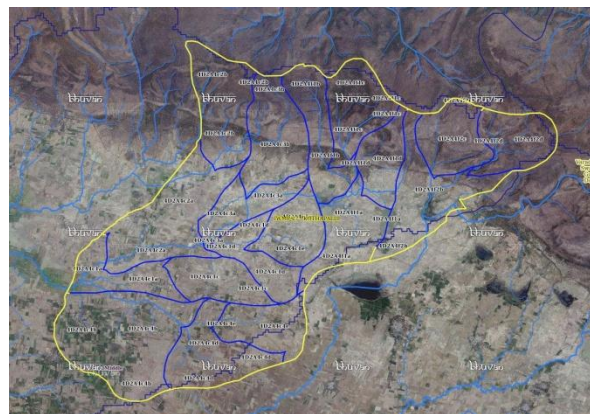
Satellite Data and Ancillary Data

Satellite data*	T0-A**	T0-B**	T5
	2010-11	2011-12	2018-19
LISS IV	2010-11		
SCENE 1			22-Dec-19
SCENE2			
SCENE 3			
SCENE 4			
CARTO	2010-11		
SCENE 1			22-Dec-19
SCENE2			
SCENE 3			
SCENE 4			

Ancillary Data

	Category	Sub category	Status
1	Thematic maps		
	LULC (1: 10 000)		
		DRAIANGE	YES
		SETTLEMENT	YES
		ROADS/RAILS	No
	LULC (1: 50 000)		
		2005-06	
		2008-09	
2	Activity Plan Maps		
3	Drishhti Photographs		
		Total	315
4	Detailed Project Report		

Natural Color Composite overlaid with Project boundaries and high detail stream network



Legend



Drainage (1:10000 Scale)

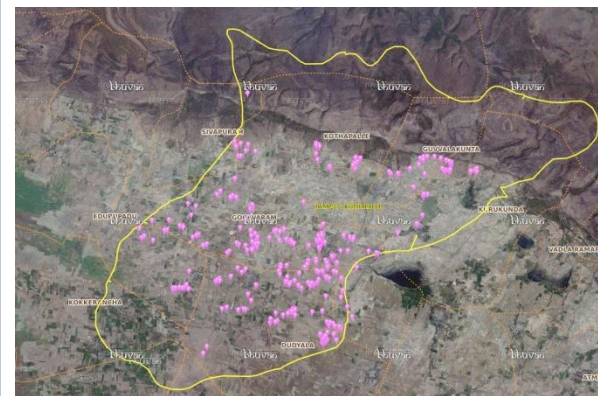


MWS Boundary



Project Boundary

Natural Color Composite overlaid with Drishhti Points



Drishhti Upload Status

Classification of the Activities

Sr. No	Activity	Drishti Photo	Visible on satellite
1	Afforestation	0	0
2	Horticulture	0	0
3	Agriculture	0	0
4	Blockplanting	0	0
5	Bund planting	0	0
6	Drainage Treatment	0	0
7	Farm ponds/Dug out pit	198	175
8	Check dams (Civil work)	0	0
9	Checks & plugins	24	20
10	Om (Other measurement)	0	0
11	LM (Livelihood Measures)	3	3
12	Nallah Bunds/Drainage treatment	0	0
13	Percolation tanks / Ground water recharge structure	0	0
14	Production System and Micro-Enterprises	0	0
15	Livelihood Activities	0	0
16	Capacity Building Activities	0	0
17	Entry Point Activity	0	0
18	Others	0	0
	TOTAL	352	315

MONITORING IN THE PROJECT AREA

Site Wise Changes in the Project

- Impacts of the activities carried out are presented through combination of Drishti and Srishti captures.
- T0 is the baseline period before implementation (2010-11) and T5 is 2018-19 period for monitoring.
- Captures are also provided wherever changes are observed in satellite images, that may match expected activity related impact, even though they don't have Drishti report yet.

Monitoring of activities in Kurnool Dt Andhra Pradesh. IWMP-27/2010-11



T0

T0:2010-11



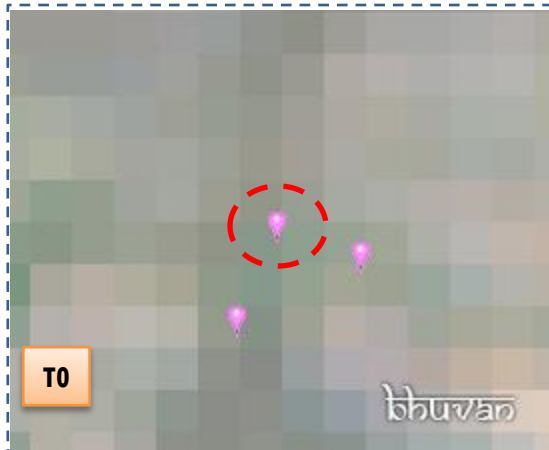
T1

T1: 22 February 2014



Drishti Sl no. 149260 MWS :4D2A4f1d

Farm pond



T0

T0:2010-11



T1

T1: 22 February 2014



Drishti Sl no. 160677 MWS :4D2A4c1d

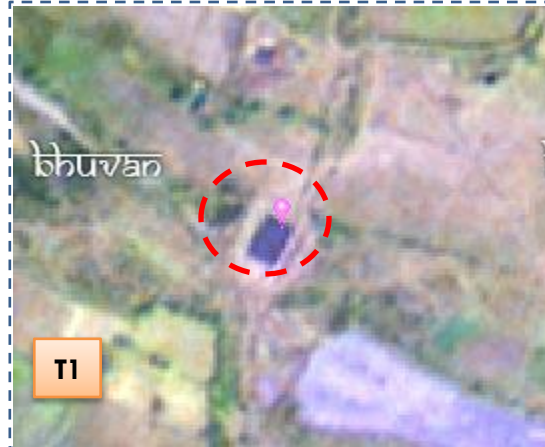
Farm pond

Monitoring of activities in Kurnool Dt Andhra Pradesh. IWMP-27/2010-11



T0

T0: 2010-11



T1

T1: 22 February 2014



Drishti Sl no. 2462323 MWS : 4D2A4c1c

Farm pond



T0

T0: 2010-11



T1

T1: 22 February 2014



Drishti Sl no. 2466668 MWS : 4D2A4c1e

Farm pond

Natural Color Composite – 2010-11 to 2018-19

Natural Color Composite- 2010-11



Source:Fusen data,NRSC

Natural Color Composite- 09th May 2015



Source:NCC,NRSC

Natural Color Composite-2016



Source: Sentinel_II, NRSC

Natural Color Composite- 01st April 2017



Source:LISS-IV,NRSC

Natural Color Composite- 01st March 2018



Source: Sentinel_II, NRSC

Natural Color Composite- 25th March 2019



Source: Sentinel_II, NRSC

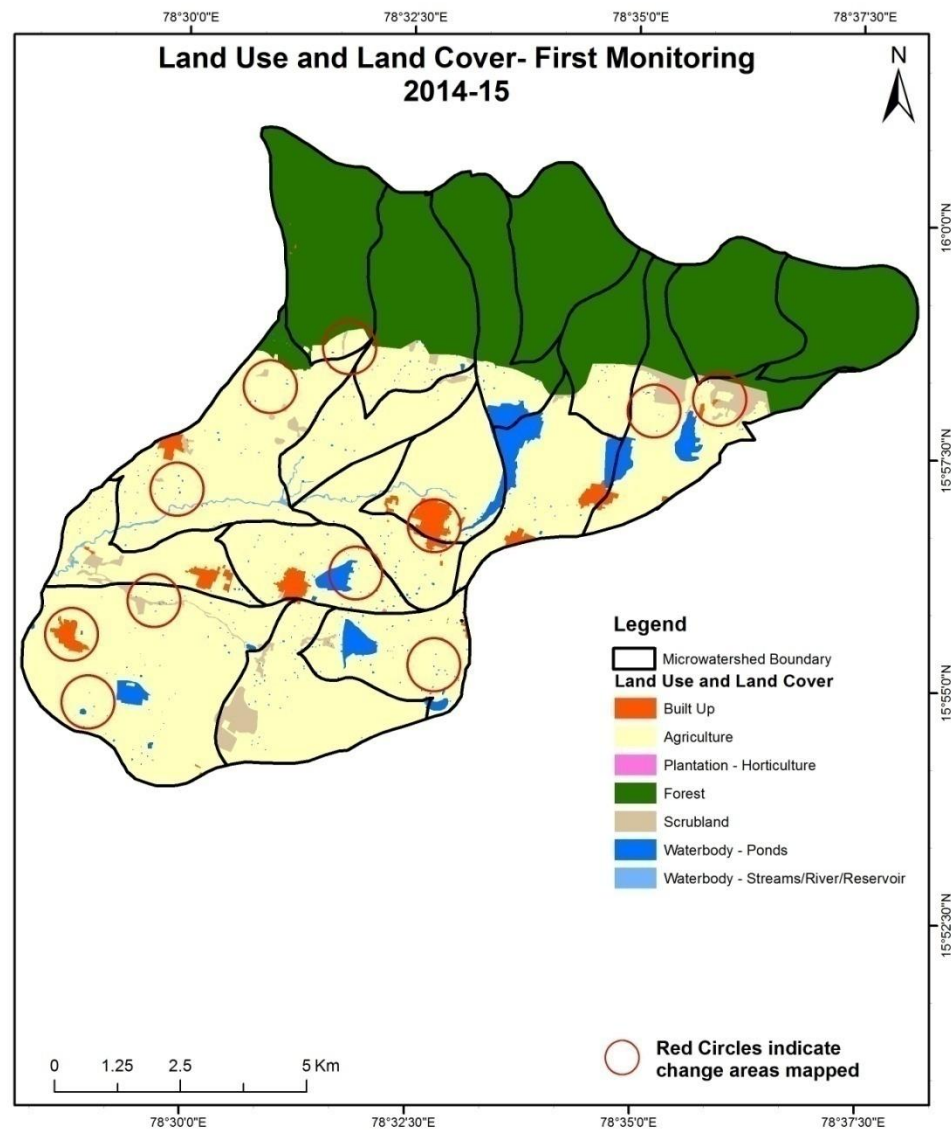
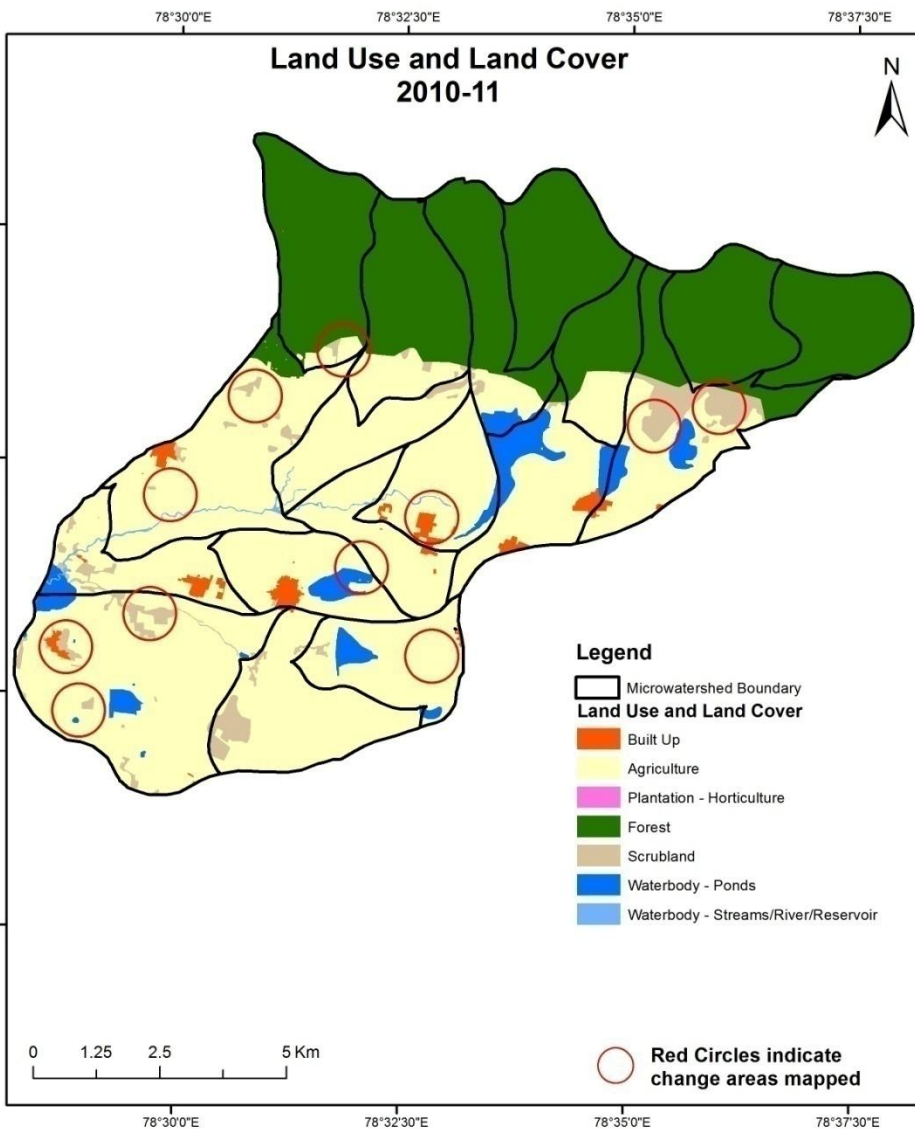
MONITORING IN THE PROJECT AREA

Land use and Land cover Changes in the Project

- Change in land use and land cover from T0 to T5 are analyzed in terms of built up, mining/dump, agriculture, plantation- horticulture, forest, barren rocky waterbody-streams/river/reservoir and waterbody -ponds.
- Captures are also provided wherever changes are observed in satellite images, that may match expected activity related impact, even though they don't have Drishti report yet.
- The result obtained for the period T0 to T5 are given in the change matrix table.
- In matrix table column represents the T0 (2010-11) and row represents the T5 (2018-19)

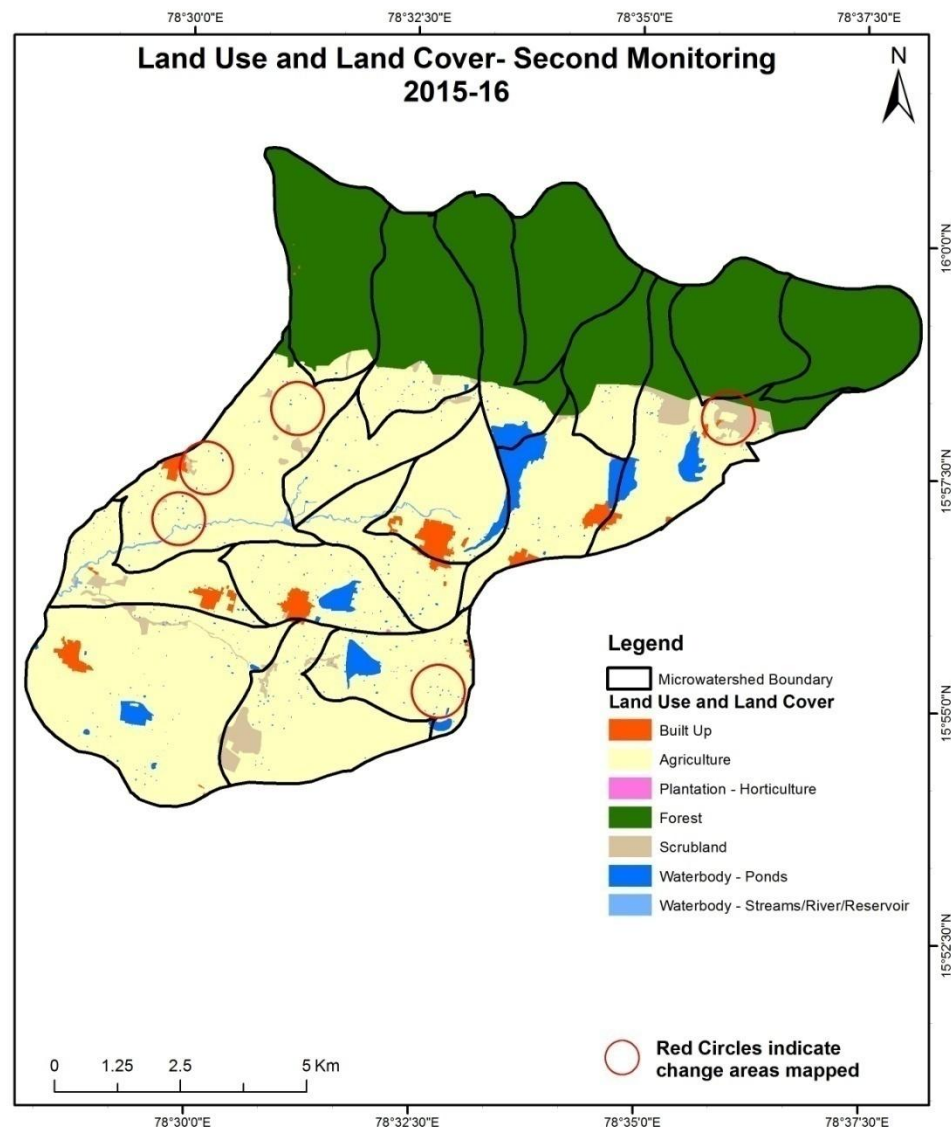
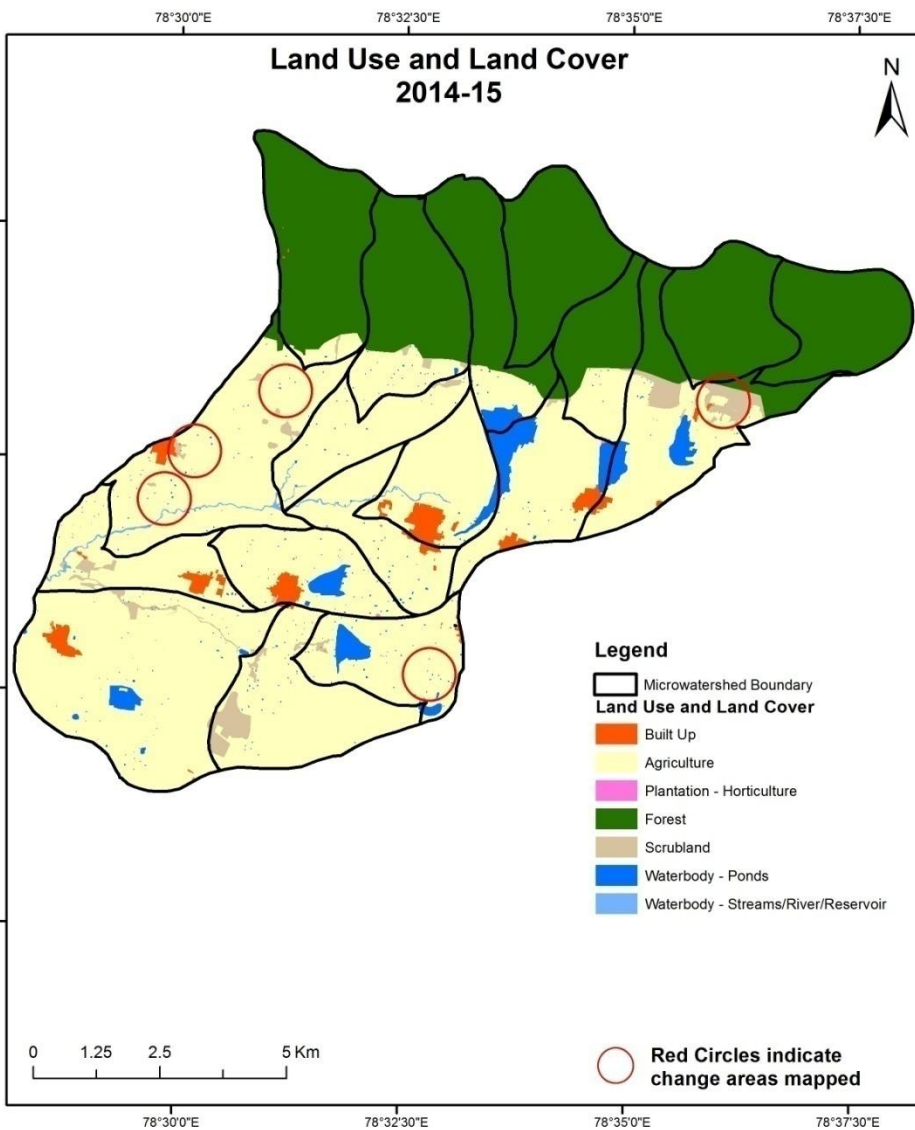
Comparative assessment of Land Use and Land Cover for Pre and Post IWMP implementation (2010-11 to 2014-15)

Scale: 1:10000



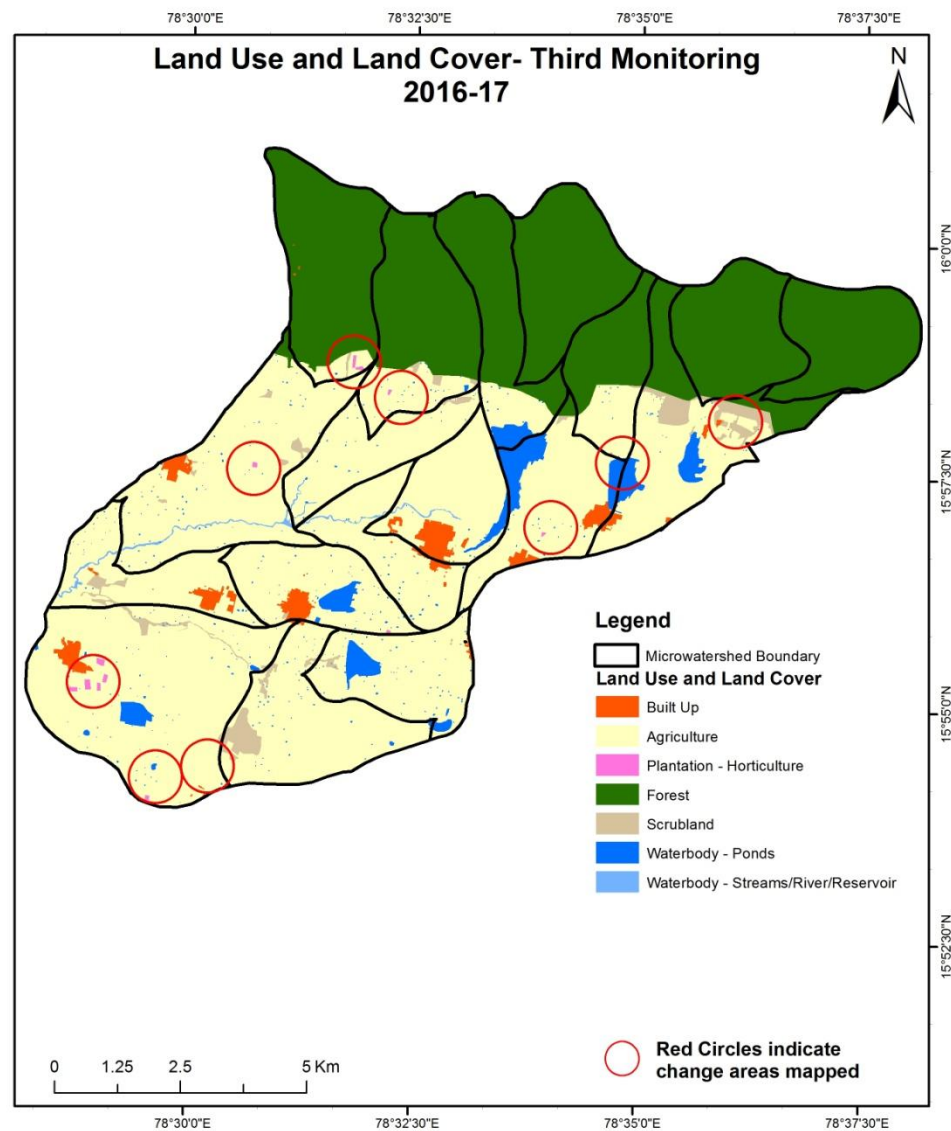
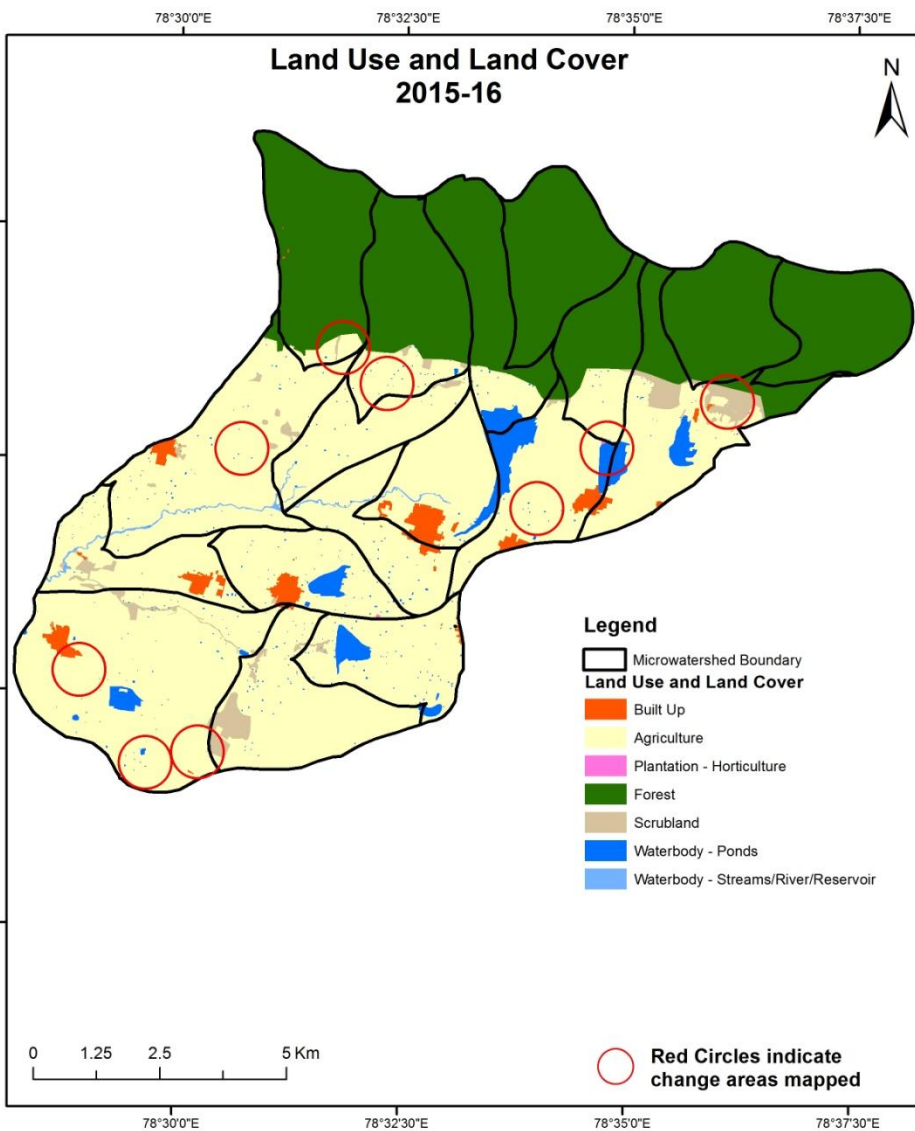
Comparative assessment of Land Use and Land Cover for Pre and Post IWMP implementation (2014-15 to 2015-16)

Scale: 1:10000



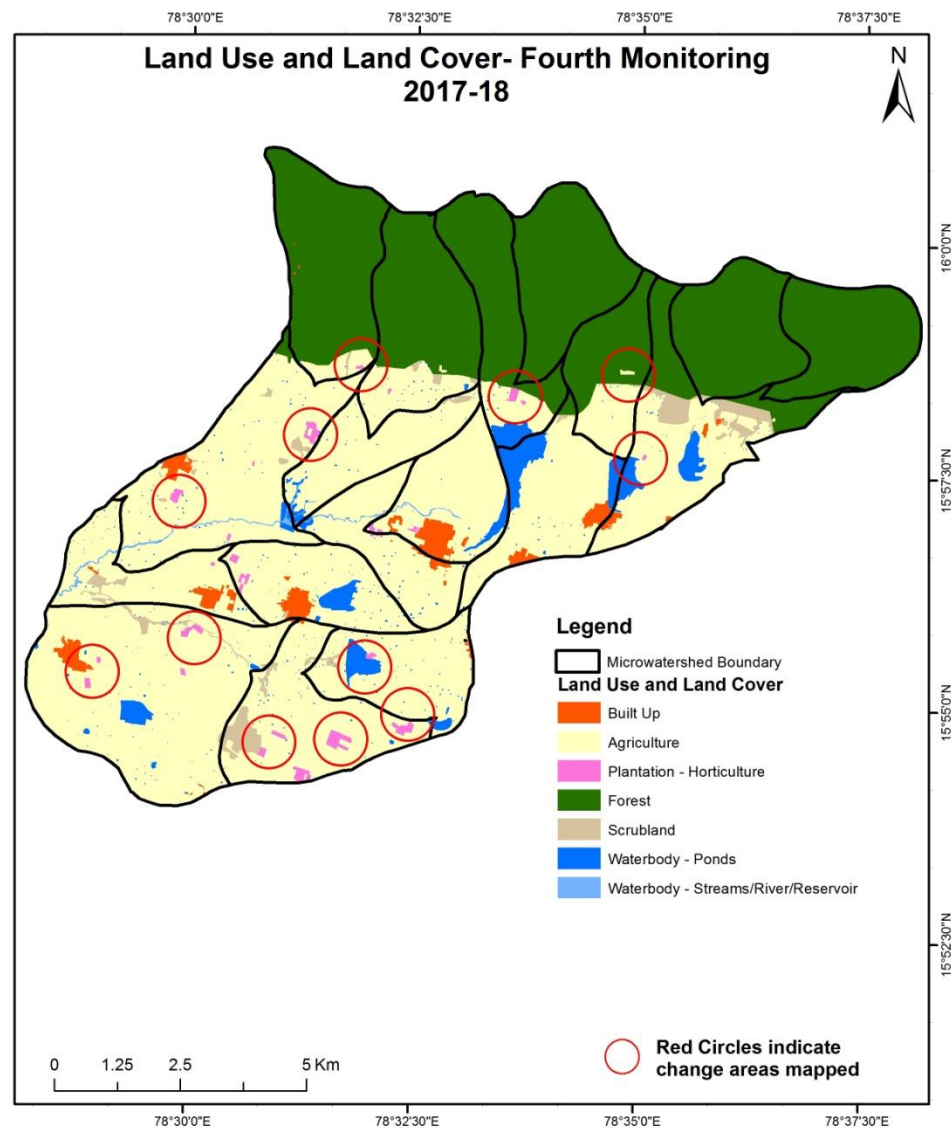
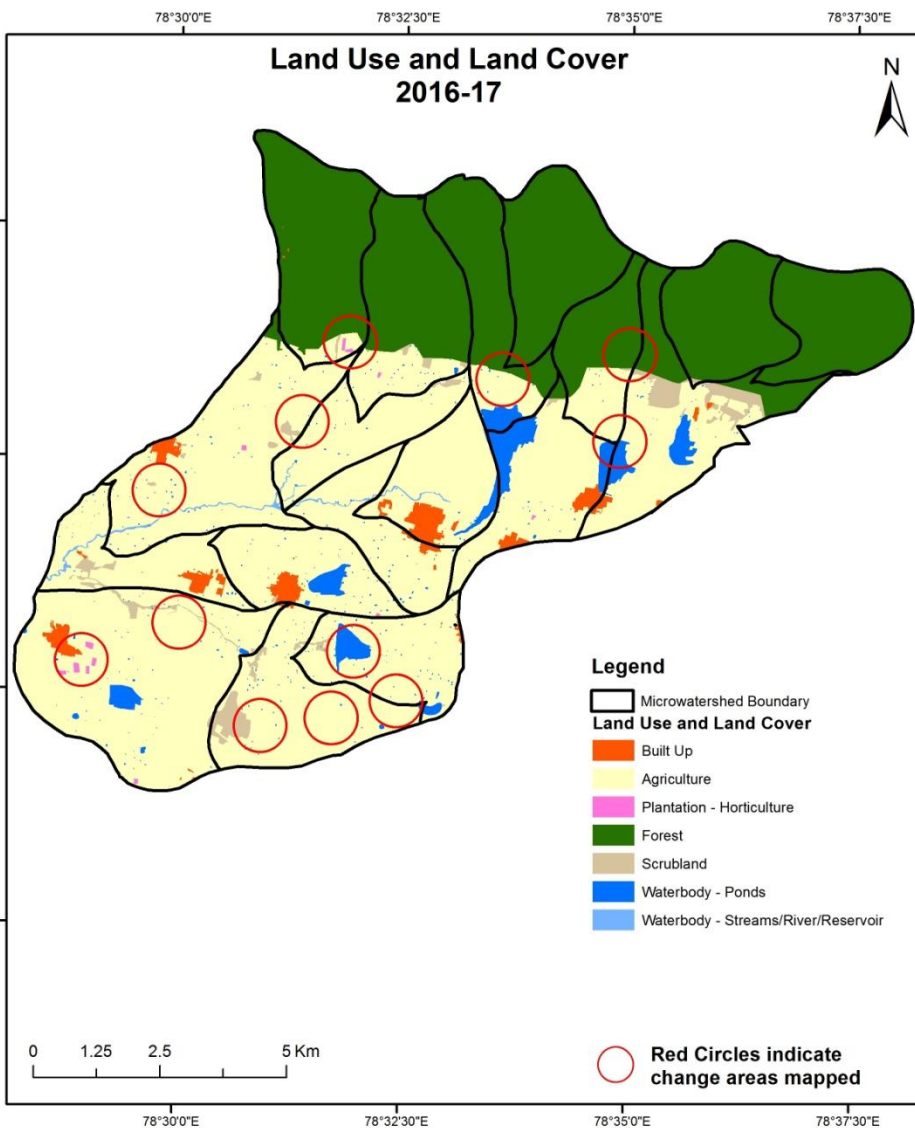
Comparative assessment of Land Use and Land Cover for Pre and Post IWMP implementation (2015-16 to 2016-17)

Scale: 1:10000



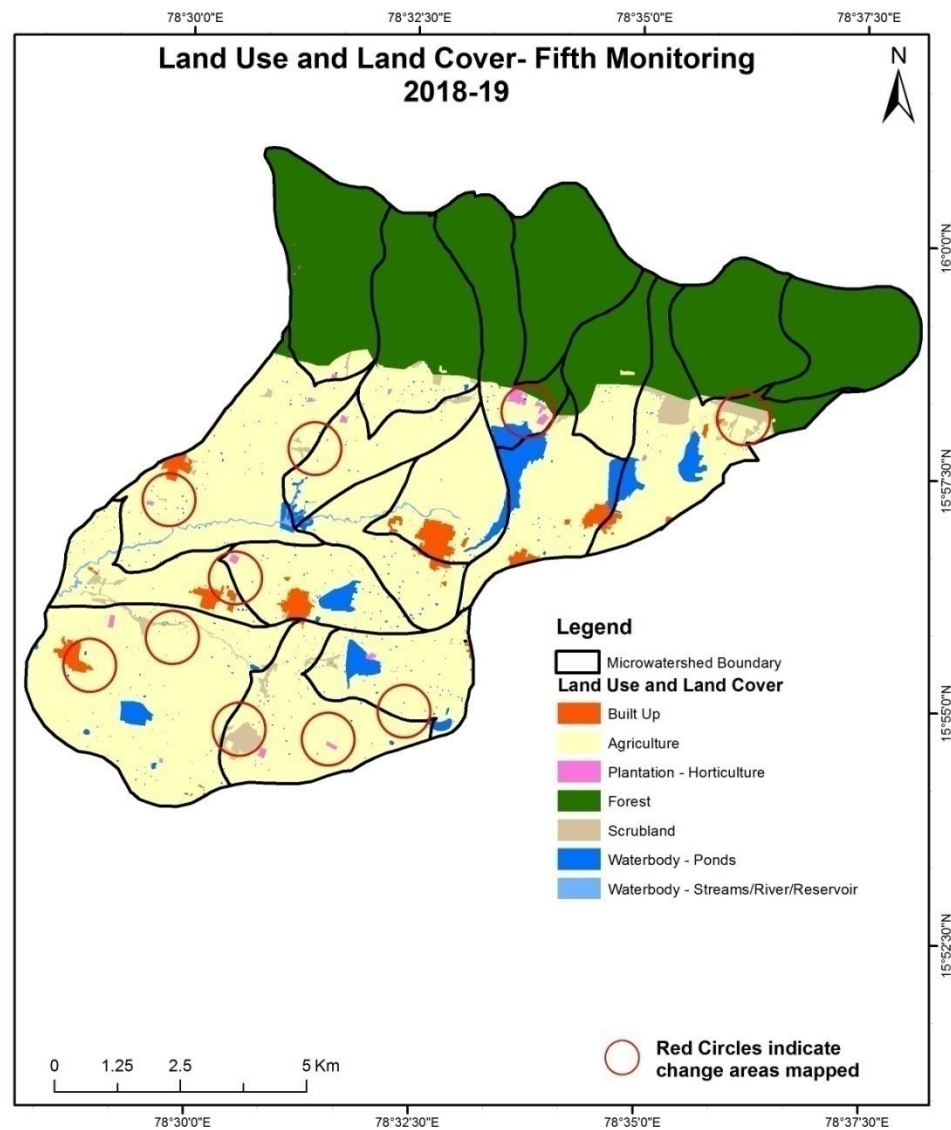
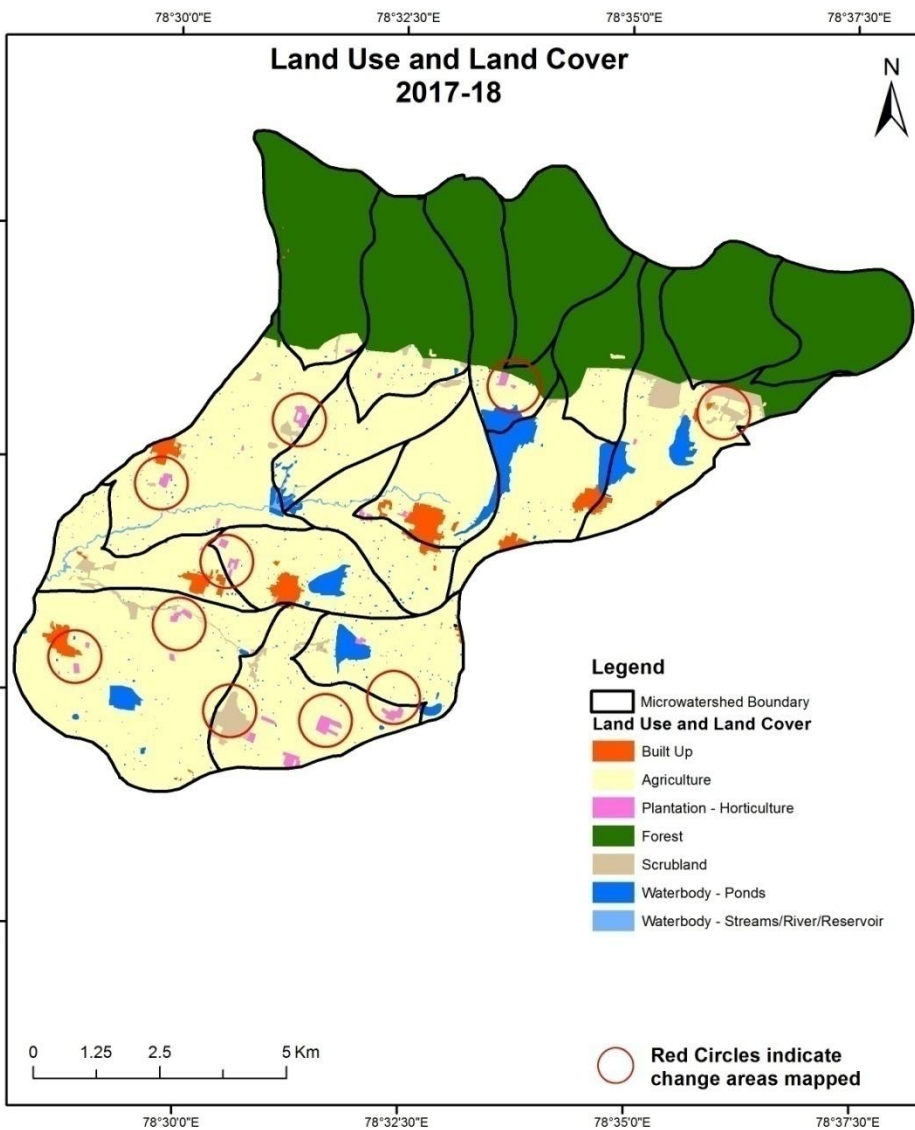
Comparative assessment of Land Use and Land Cover for Pre and Post IWMP implementation (2016-17 to 2017-18)

Scale: 1:10000



Comparative assessment of Land Use and Land Cover for Pre and Post IWMP implementation (2017-18 to 2018-19)

Scale: 1:10000

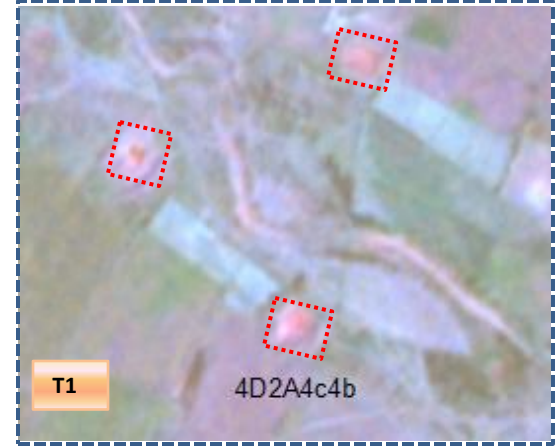


Land Use and Land Cover changes for Pre and Post treatment dates

Scrub to Water body



T0: 2010-11



T1: 30 November 2014

Agriculture to water body



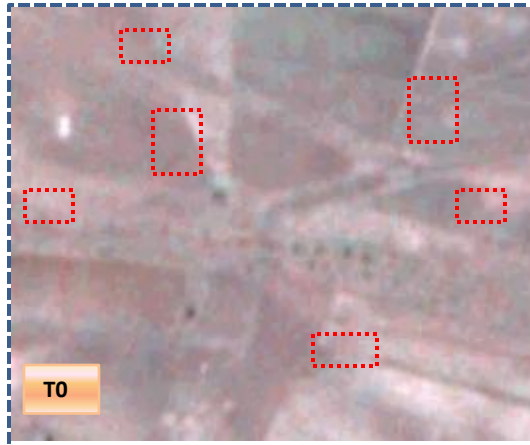
T0: 2010-11



T1: 30 November 2014

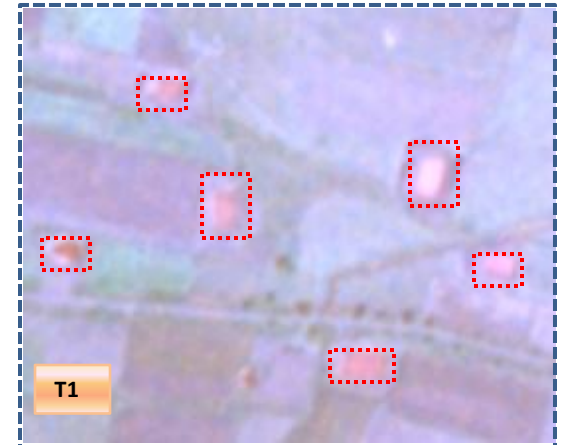
Land Use and Land Cover changes for Pre and Post treatment dates

Agriculture to Water body



T0

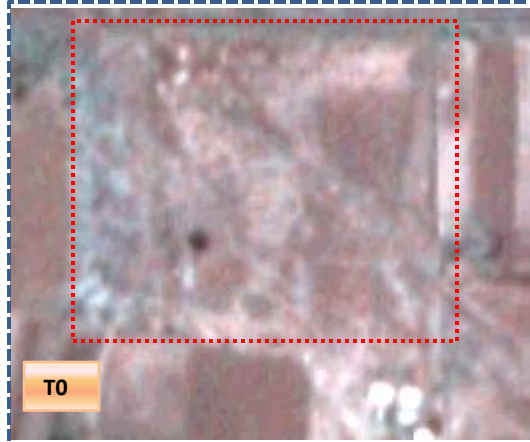
T0: 2010-11



T1

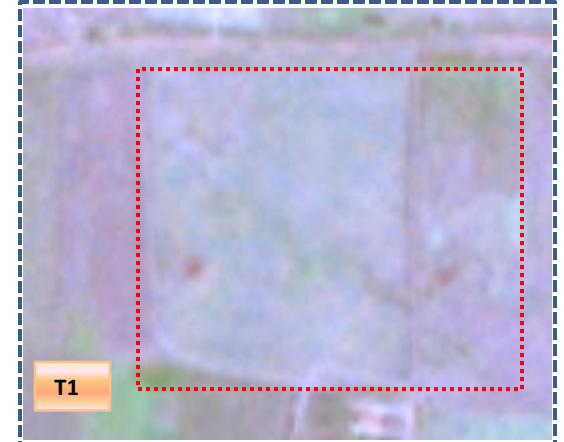
T1: 30 November 2014

Scrub to Agriculture



T0

T0: 2010-11



T1

T1: 30 November 2014

Table showing change matrix depicting Land cover transitions during study period-2010-11 to 2014-15

Land cover	Monitoring period (T1)										Units in Hectares		
	Built up	Mining/ dump	Agriculture	Plantation Horticulture	Forest	Forest Plantation	Barren Rocky	Scrub	Waterbody- Streams/River	Water body Ponds	Grand Total		
Built up	150.97												150.97
Mining/dump													
Agriculture	36.55		6400.92	0.55						25.65			6463.67
Plantation Horticulture				1.17									1.17
Forest	0.38		44.92		3855.48						0.02		3900.80
Forest Plantation													
Barren Rocky													
Scrub	14.59		142.75					247.95			1.80		407.09
Waterbody- Streams/River									33.55				33.55
Waterbody – Ponds			120.56								293.31		413.88
Grand Total	202.49		6709.16	1.72	3855.48			247.95	33.55		320.79		11371.14

- In matrix table diagonal elements represent the both periods in the same class and off diagonal elements represents change in between the classes.
- In T0 62.7 ha of the agriculture area has decreased and it is converted into Built-up, plantation and water body in T1.
- In T1 308.2 ha of the agriculture area has increased from forest, scrubland and water body of T0.
- The additional agriculture are coming from waterbody in T1 represents seasonal agriculture.

Table showing change matrix depicting Land cover transitions during study period-2014-15 to 2015-16

Land cover	Monitoring period (T2)										Units in Hectares		
	Built up	Mining/ dump	Agriculture	Plantation Horticulture	Forest	Forest Plantation	Barren Rocky	Scrub	Waterbody- Streams/River	Water body Ponds	Grand Total		
T1													
Built up	202.49												202.49
Mining/dump													
Agriculture	0.31		6708.40								0.45		6709.16
Plantation Horticulture				1.72									1.72
Forest					3855.45						0.03		3855.48
Forest Plantation													
Barren Rocky													
Scrub	0.05		0.41					247.45			0.03		247.95
Waterbody- Streams/River									33.55				33.55
Waterbody – Ponds			0.03								320.76		320.79
Grand Total	202.86		6708.83	1.72	3855.45			247.45	33.55		321.27		11371.14

- In matrix table diagonal elements represent the both periods in the same class and off diagonal elements represents change in between the classes.
- In T1 0.76 ha of the agriculture area has decreased and it is converted into Built-up and water body in T2.
- In T2 0.44 ha of the agriculture area has increased from scrubland and water body area of T1.
- The additional agriculture are coming from waterbody in T2 represents seasonal agriculture.

Table showing change matrix depicting Land cover transitions during study period-2015-16 to 2016-17

Land cover	Monitoring period (T3)										Units in Hectares	
	Built up	Mining/ dump	Agriculture	Plantation Horticulture	Forest	Forest Plantation	Barren Rocky	Scrub	Waterbody- Streams/River	Water body Ponds	Grand Total	
Built up	202.86										202.86	
Mining/dump												
Agriculture	1.26		6686.28	13.50						7.80	6708.83	
Plantation Horticulture			1.17	0.55							1.72	
Forest			1.42		3854.00					0.04	3855.45	
Forest Plantation												
Barren Rocky												
Scrub	2.56		29.23					215.66			247.45	
Waterbody- Streams/River									33.55		33.55	
Waterbody – Ponds										321.27	321.27	
Grand Total	206.68		6718.09	14.05	3854.00			215.66	33.55	329.11	11371.14	

- In matrix table diagonal elements represent the both periods in the same class and off diagonal elements represents change in between the classes.
- In T2 22.5 ha of the agriculture area has decreased and it is converted into Built-up, plantation and water body in T3.
- In T3 31.8 ha of the agriculture area has increased from plantation, forest and scrubland of T2.
- The additional agriculture are coming from waterbody in T3 represents seasonal agriculture.

Table showing change matrix depicting Land cover transitions during study period-2016-17 to 2017-18

Land cover	Monitoring period (T4)										Units in Hectares		
	Built up	Mining/ dump	Agriculture	Plantation Horticulture	Forest	Forest Plantation	Barren Rocky	Scrub	Waterbody- Streams/River	Water body Ponds	Grand Total		
Built up	206.68												206.68
Mining/dump													
Agriculture	1.72		6622.55	68.26							25.56		6718.09
Plantation Horticulture			8.36	5.68									14.05
Forest			6.11		3847.89								3854.00
Forest Plantation													
Barren Rocky													
Scrub	0.03							215.63					215.66
Waterbody- Streams/River									33.55				33.55
Waterbody – Ponds				1.22							327.89		329.11
Grand Total	208.43		6637.02	75.16	3847.89			215.63	33.55		353.45		11371.14

- In matrix table diagonal elements represent the both periods in the same class and off diagonal elements represents change in between the classes.
- In T3 95.54 ha of the agriculture area has decreased and it is converted into Built-up, plantation and water body in T4.
- In T4 14.48 ha of the agriculture area has increased from plantation and forest of T3.
- The additional agriculture are coming from waterbody in T4 represents seasonal agriculture.

Table showing change matrix depicting Land cover transitions during study period-2017-18 to 2018-19

Land cover	Monitoring period (T5)										Units in Hectares	
	Built up	Mining/ dump	Agriculture	Plantation Horticulture	Forest	Forest Plantation	Barren Rocky	Scrub	Waterbody- Streams/River	Water body Ponds	Grand Total	
Built up	208.43										208.43	
Mining/dump												
Agriculture	3.33		6615.23	17.15						1.31	6637.02	
Plantation Horticulture			60.81	14.35							75.16	
Forest			1.40		3846.43					0.06	3847.89	
Forest Plantation												
Barren Rocky												
Scrub			26.17					189.41		0.06	215.63	
Waterbody- Streams/River									33.55		33.55	
Waterbody – Ponds			1.38							352.07	353.45	
Grand Total	211.76		6704.99	31.51	3846.43			189.41	33.55	353.50	11371.14	

- In matrix table diagonal elements represent the both periods in the same class and off diagonal elements represents change in between the classes.
- In T4 21.7 ha of the agriculture area has decreased and it is converted into Built-up, plantation and water body in T5.
- In T5 89.7 ha of the agriculture area has increased from plantation, forest, scrubland and water body area of T4.
- The additional agriculture are coming from waterbody in T5 represents seasonal agriculture.

Conclusion

1. DPR of the project is uploaded on to Bhuvan Portal.
2. The LULC shows that there is an increase in Crop land, Built up area, Reservoir / Tanks & decrease in Scrubland as presented in the change matrix for different years.
3. There is an decrease of 60.3 Hectares in Reservoir / Tanks area as compared between baseline LU/LC data 2010-11 (T0) & 2018-19 (T5) years.
4. There is an increase of 51, 9 & 67 Hectares From T0 to T1, T2-T3 & T4-T5 respectively and overall increase of 241 Hectares in Crop land area as compared between baseline LU/LC data 2010-11 (T0) & 2018-19 (T5) years.
5. There is an increase of 30 ha of the Plantation/Horticulture area has been increased between 2010-11 (T0) & 2018-19 (T5) years.
6. There is a decrease of 217 Hectares in Scrubland area as compared between 2010-11 (T0) & 2018-19 (T5) years.
7. Farm ponds (0) is visible on IWMP Bhuvan Srishti portal out of Bhuvan Drishti photo of Farm ponds (1) verified from the portal.