

MONITORING OF IWMP WATERSHED PROJECTS USING GEO-INFORMATION

SUMMARY REPORT

CHITTOOR -12/2010-11

Andhra Pradesh

Submitted to NRSC, Balanagar, Hyderabad
March-2021

T 0 - T 1 - T 2 - T 3 - T 4 - T 5



AGRICULTURE & SOIL
DIVISION
Andhra Pradesh Space
Applications Centre (APSAC)
ITE&C Department Govt. of
Andhra Pradesh



RURAL DEVELOPMENT AND
WATERSHED MONITORING
DIVISION
Land Resources and Land Use
Mapping and Monitoring Group,
Remote Sensing Application Area,
National Remote Sensing Centre, ISRO



DEPARTMENT OF LAND
RESOURCES
Ministry of Rural Development
Government of India

C O N T E N T S

- **EXECUTIVE SUMMARY**

01. STUDY AREA
02. SATELLITE & ANCILLARY DATA INCLUDING DRISHTI STATUS
03. MONITORING IN THE PROJECT AREA : Site wise changes in the project
04. CONCLUSIONS

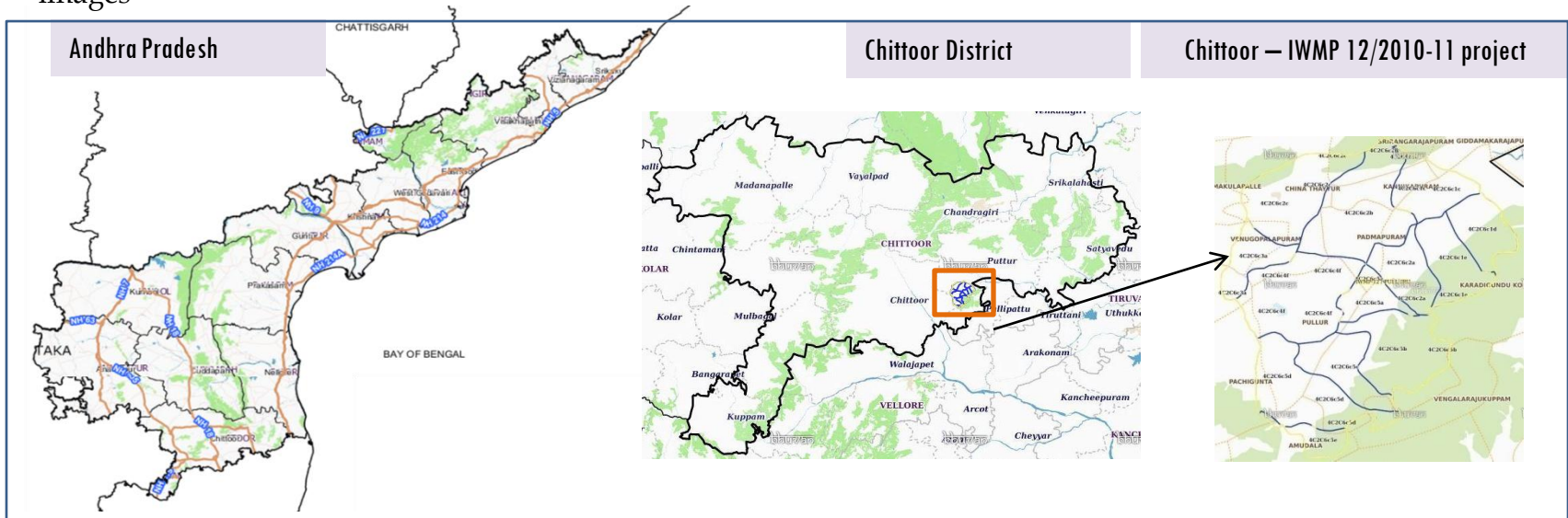
E X E C U T I V E S U M M A R Y

- Integrated Watersheds Management Project (IWMP) is a flagship programme of Department of Land Resources (DoLR), Ministry of Rural Development (MRD).
- National Remote Sensing Centre (NRSC), ISRO has designed and developed Bhuvan Geo-ICT Web portal tools namely – Srishti and Drishti for monitoring and evaluation of IWMP watersheds. It uses high spatial and temporal resolution sensors viz., Carto-1/2 (2.5 m) , LISS-IV(5.8 m color).
- Current summary report gives details of Project- IWMP-12/2010-11, Chittoor District of Andhra Pradesh. The total geographical area of the project is 8139 ha. It comprises of 10 micro watersheds.
- In the project area 28 Drishti photos were uploaded showing all water harvesting structures of check dams/Rock fill dam, recharge pits etc,.
- Project area as per image analysis has witnessed distinguishable increase in farm ponds, showing new farm ponds or dug out pits and check dams and drainage treatments with 68 ha increase in the area.
- Major percentage i.e. 42.7 % is covered by the agriculture, 26.5 % is covered by forest and 18.2 % is covered by scrubland and remaining by other land use classes.

PROJECT : CHITTOOR – IWMP-12/2010-11

DISTRICT : CHITTOOR , STATE : ANDHRA PRADESH

- The study area falls in Srirangarajapuram and Palasamudram Mandal of Chittoor district of Andhra Pradesh state. The total geographical area of the project is 8139 ha. It comprises of 10 micro watersheds. Location Map of the study area is shown in Figure below. Analysis is done for 2010-11 (T0) period (*Batch -II*) projects taking 2018-19 (T5) period satellite images



- The climate of the district is dry and healthy. Out of 66 mandals in the district, 31 are upland mandals which are located in Madanapalle division and are comparatively cooler than the eastern mandals except Chittoor mandal where the climate is moderate. December and January are the coldest months when the mean maximum temperature will be around 26.40 °C, May is the hottest month with the mean daily maximum temperature rising above 40 °C.
- The district receive 83.62 percent of rainfall during South-West monsoon and North-West monsoon period, the rainfall is nominal in summer. On an average the district receives more than 50 percent of rainfall during North- East monsoon.

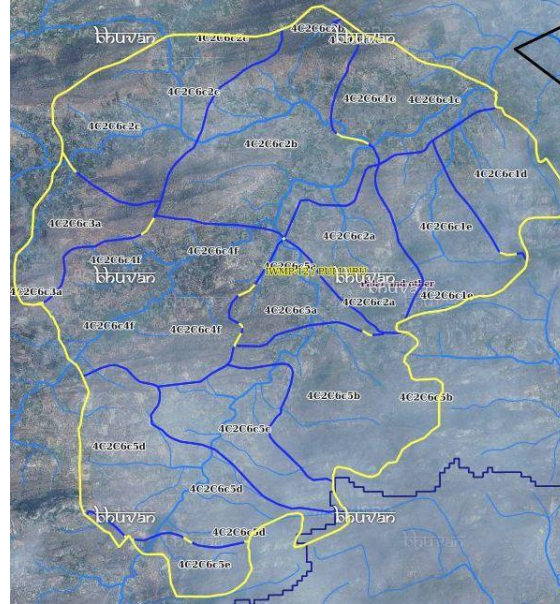
Satellite Data and Ancillary Data

Satellite data*	T0-A**	T0-B**	T5
	2010-11	2011-12	2018-19
LISS IV	2010-11		
SCENE 1			23-Feb-19
SCENE2			
SCENE 3			
SCENE 4			
CARTO	2010-11		
SCENE 1			23-Feb-19
SCENE2			
SCENE 3			
SCENE 4			

Ancillary Data

	Category	Sub category	Status
1	Thematic maps		
	LULC (1: 10 000)		
		DRAIANGE	YES
		SETTLEMENT	YES
		ROADS/RAILS	No
	LULC (1: 50 000)		
		2005-06	
		2008-09	
2	Activity Plan Maps		
3	Drishti Photographs		
		Total	28
4	Detailed Project Report		

Natural Color Composite overlaid with Project boundaries and high detail stream network



Legend



Drainage (1:10000 Scale)

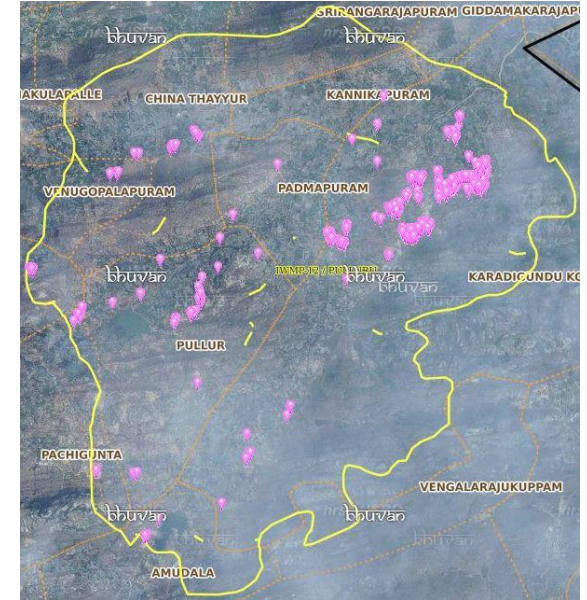


MWS Boundary



Project Boundary

Natural Color Composite overlaid with Drishti Points



Drishti Upload Status

Classification of the Activities

Sr. No	Activity	Drishti Photo	Visible on satellite
1	Agriculture/Horticulture	21	20
2	Bunding	0	0
3	Black planting	0	0
4	Bund Planting/Horticulture	0	0
5	Trench	0	0
6	Field Bunds	0	0
7	Existing activity	0	0
8	Checks & Plugs	0	0
9	New activity (boulder removal, farm ponds, dug out pits etc.,)	0	0
10	Farm ponds/Dug out pit	0	0
11	Civil work-Check dams /Rock fill dam	17	17
12	Drainage treatment /Nala Revetment, loose boulder structure, gully check	0	0
13	Land Developments (afforestation, horticulture and bund plantation of teak)	0	0
14	Lm (fodder development, varmi compost)	0	0
15	Livelihood Activities	0	0
16	Water harvesting structures (recharge pits and check dams)	0	0
17	Entry Point Activity (Cattle thought)	0	0
18	Others	664	350
	TOTAL	707	392

MONITORING IN THE PROJECT AREA

Site Wise Changes in the Project

- Impacts of the activities carried out are presented through combination of Drishti and Srishti captures.
- T0 is the baseline period before implementation (2010-11) and T5 is 2018-19 period for monitoring.
- Captures are also provided wherever changes are observed in satellite images, that may match expected activity related impact, even though they don't have Drishti report yet.

Chittoor-IWMP-12/2010-11

2009-10



January-2016



March-2017



Feb-2019



Activity :Horticulture

Monitoring of activities in Chittoor Dt Andhra Pradesh. IWMP-12/2010-11



T0:2010-11



T1: 10 January 2016



Drishti Sl no. 7034048 MWS :4C2C6c4f

Check dam



T0:2010-11



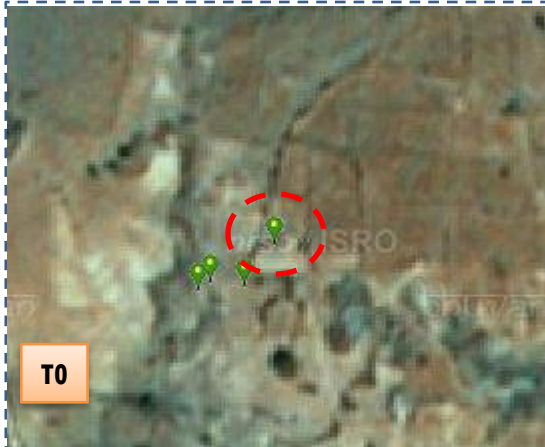
T1: 10 January 2016



Drishti Sl no. 2562276 MWS : 4C2B2c3a

Horticulture

Monitoring of activities in Chittoor Dt Andhra Pradesh. IWMP-12/2010-11



T0

T0: 2010-11



T1

T1: 10 January 2016



Drishti Sl no. 571441 MWS : 4C2B2c3e

Horticulture



T0

T0: 2010-11



T1

T1: 10 January 2016

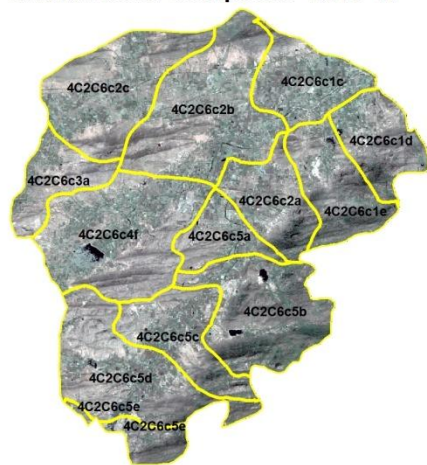


Drishti Sl no. 571612 MWS : 4C3D7a2j

Horticulture

Natural Color Composite – 2010-11 to 2018-19

Natural Color Composite- 2010-11



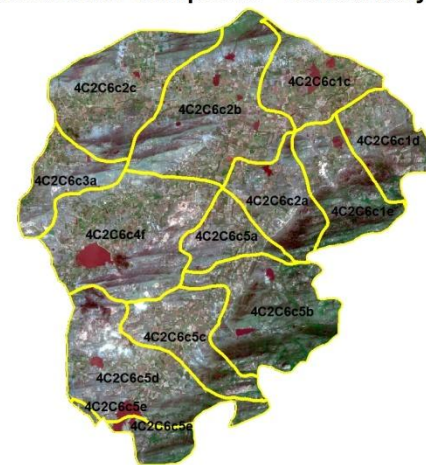
Source:Fusion data,NRSC

Natural Color Composite- 27th March 2014



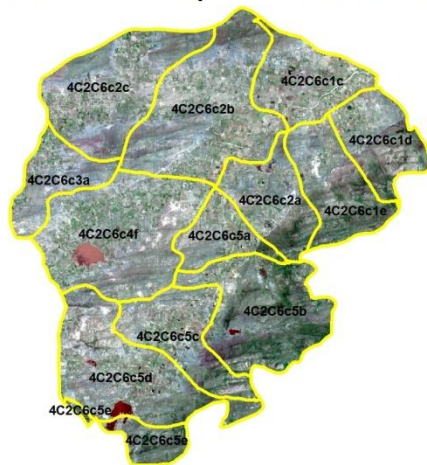
Source:LISS-IV,NRSC

Natural Color Composite- 10th January 2016



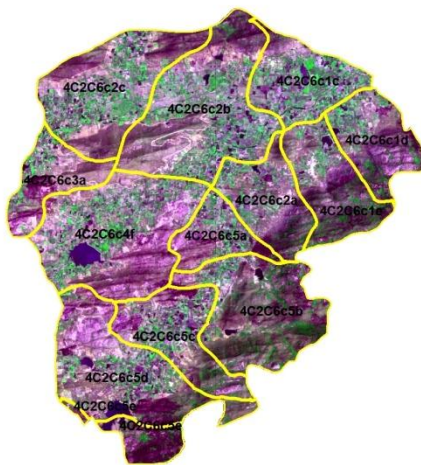
Source:NCC,NRSC

Natural Color Composite- 03rd March 2017



Source:NCC,NRSC

Natural Color Composite- 06th March 2018



Source:LISS-IV,NRSC

Natural Color Composite- 23rd February 2019



Source:Sentinel,NRSC

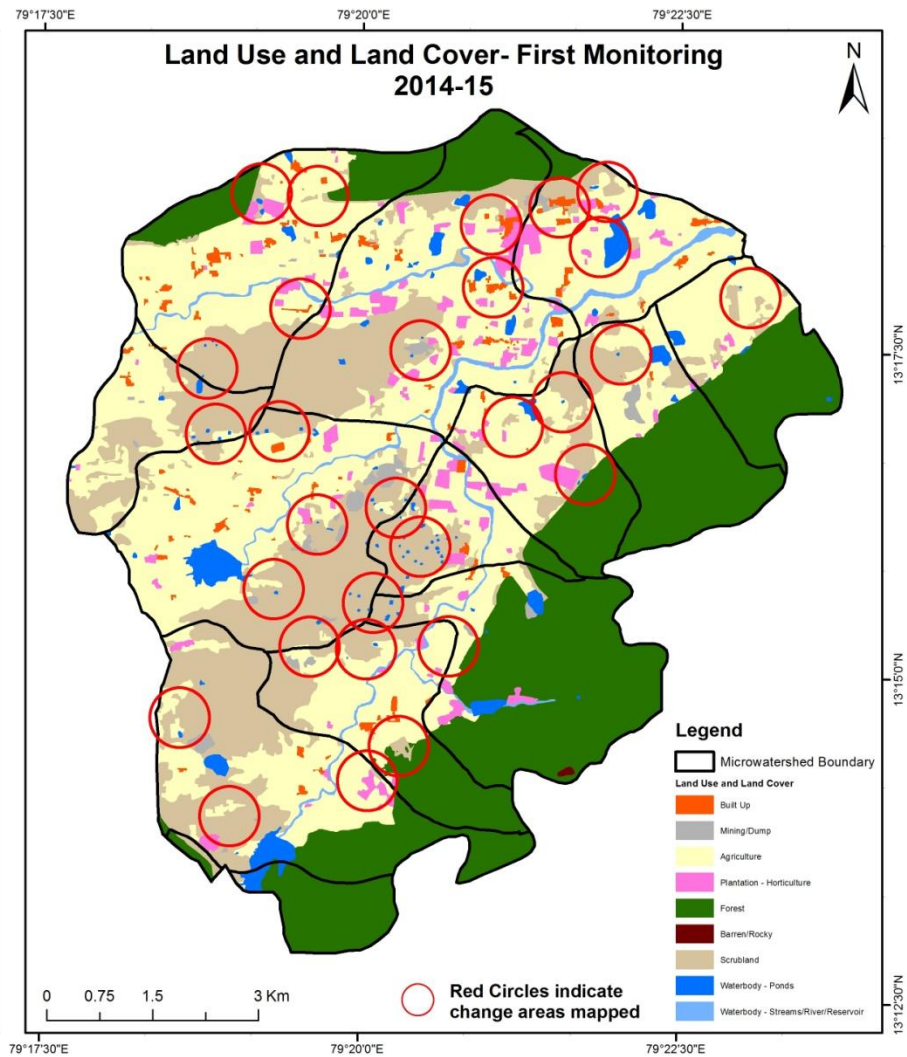
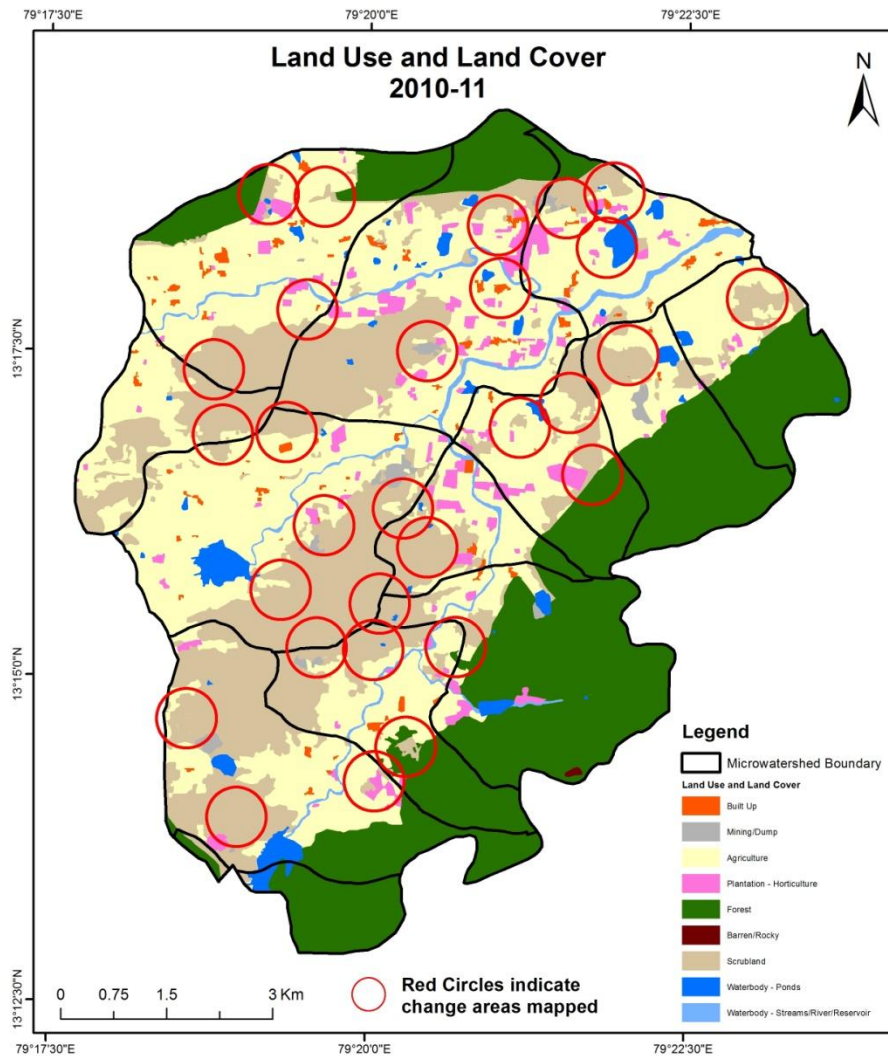
MONITORING IN THE PROJECT AREA

Land use and Land cover Changes in the Project

- Change in land use and land cover from T0 to T5 are analyzed in terms of built up, mining/dump, agriculture, plantation- horticulture, forest, barren rocky waterbody-streams/river/reservoir and waterbody -ponds.
- Captures are also provided wherever changes are observed in satellite images, that may match expected activity related impact, even though they don't have Drishti report yet.
- The result obtained for the period T0 to T5 are given in the change matrix table.
- In matrix table column represents the T0 (2010-11) and row represents the T5 (2018-19)

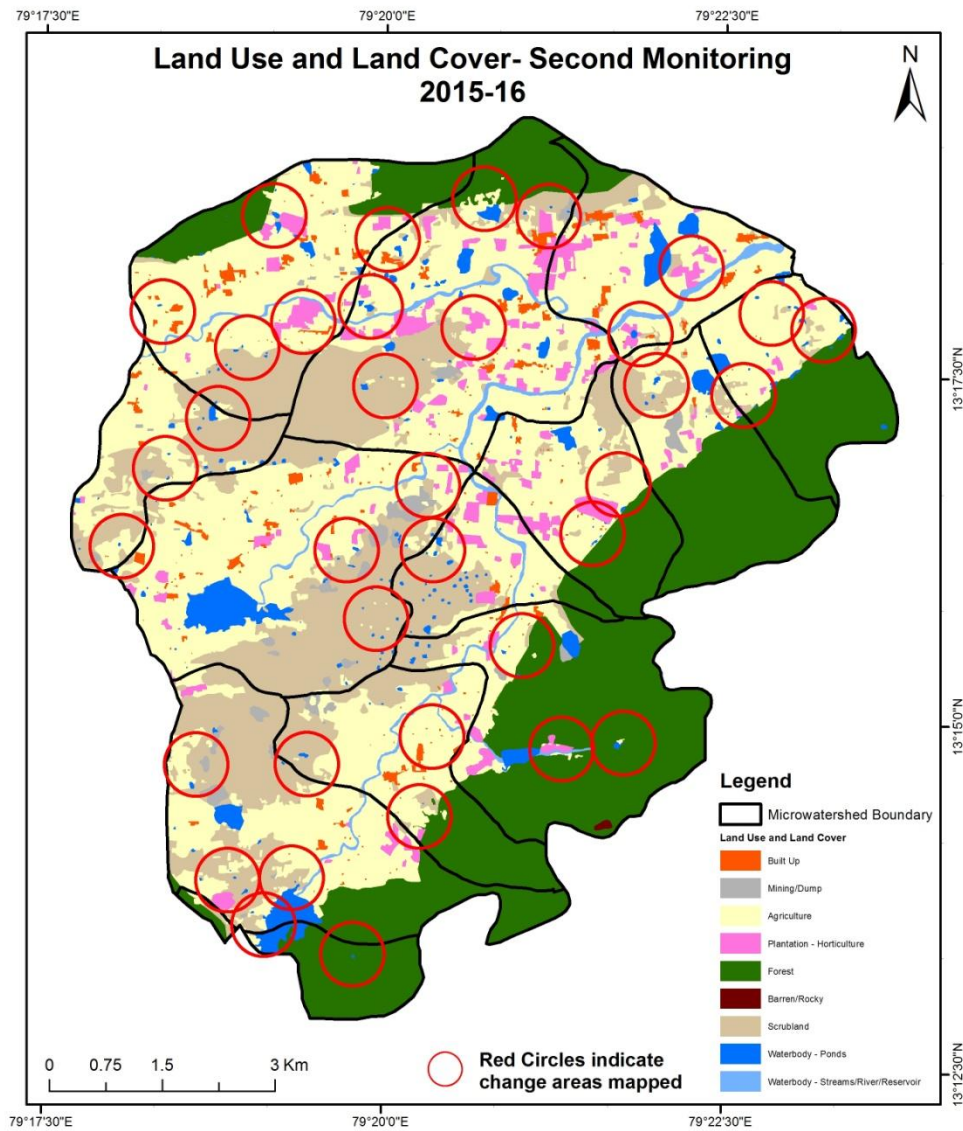
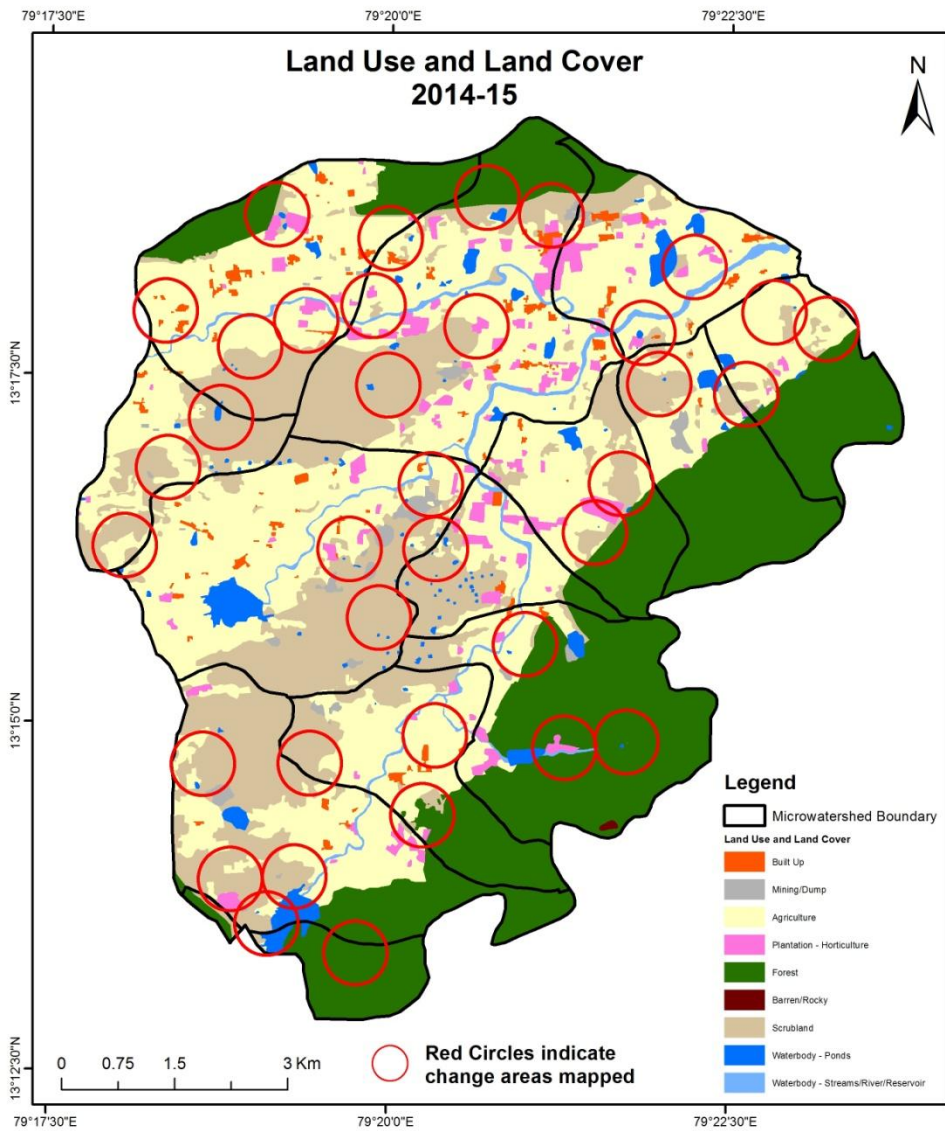
Comparative assessment of Land Use and Land Cover for Pre and Post IWMP implementation (2010-11 to 2014-15)

Scale: 1:10000



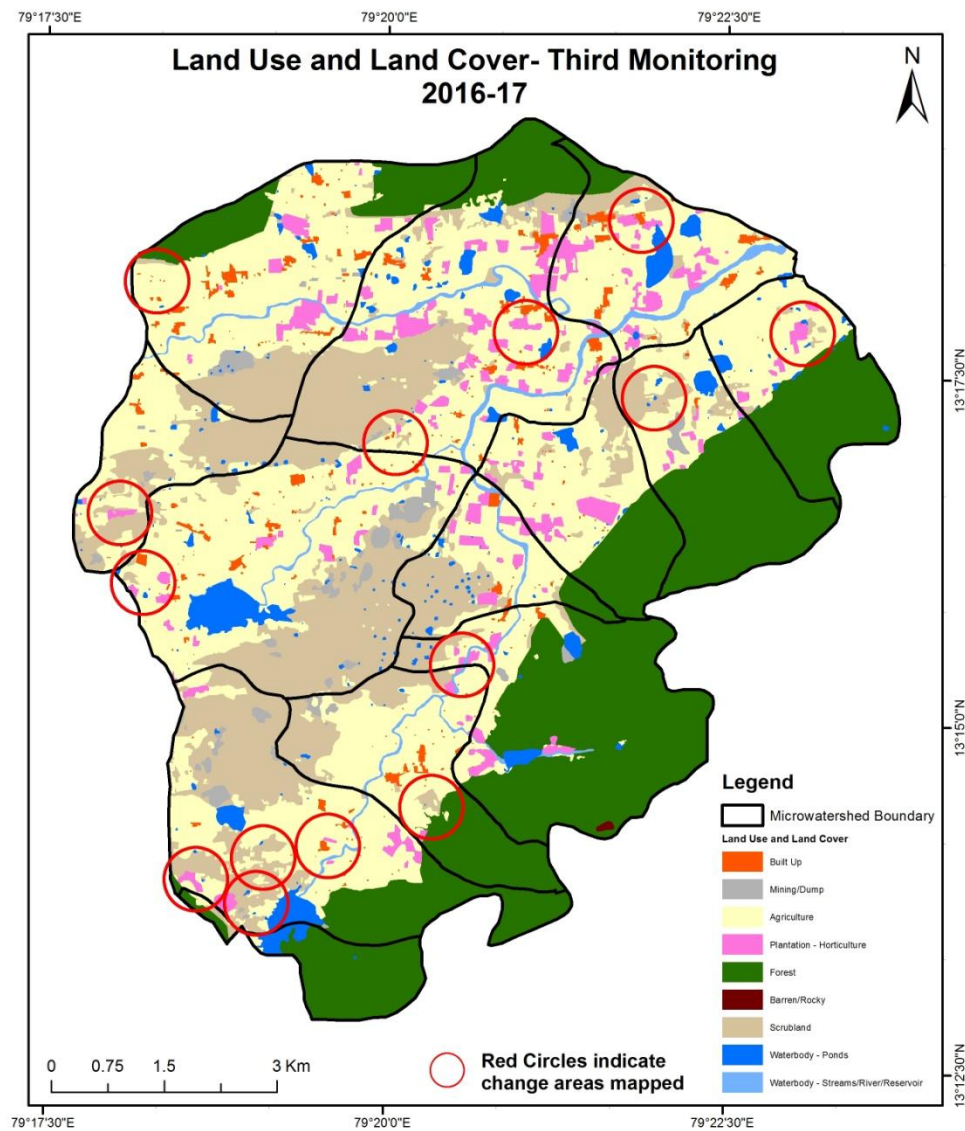
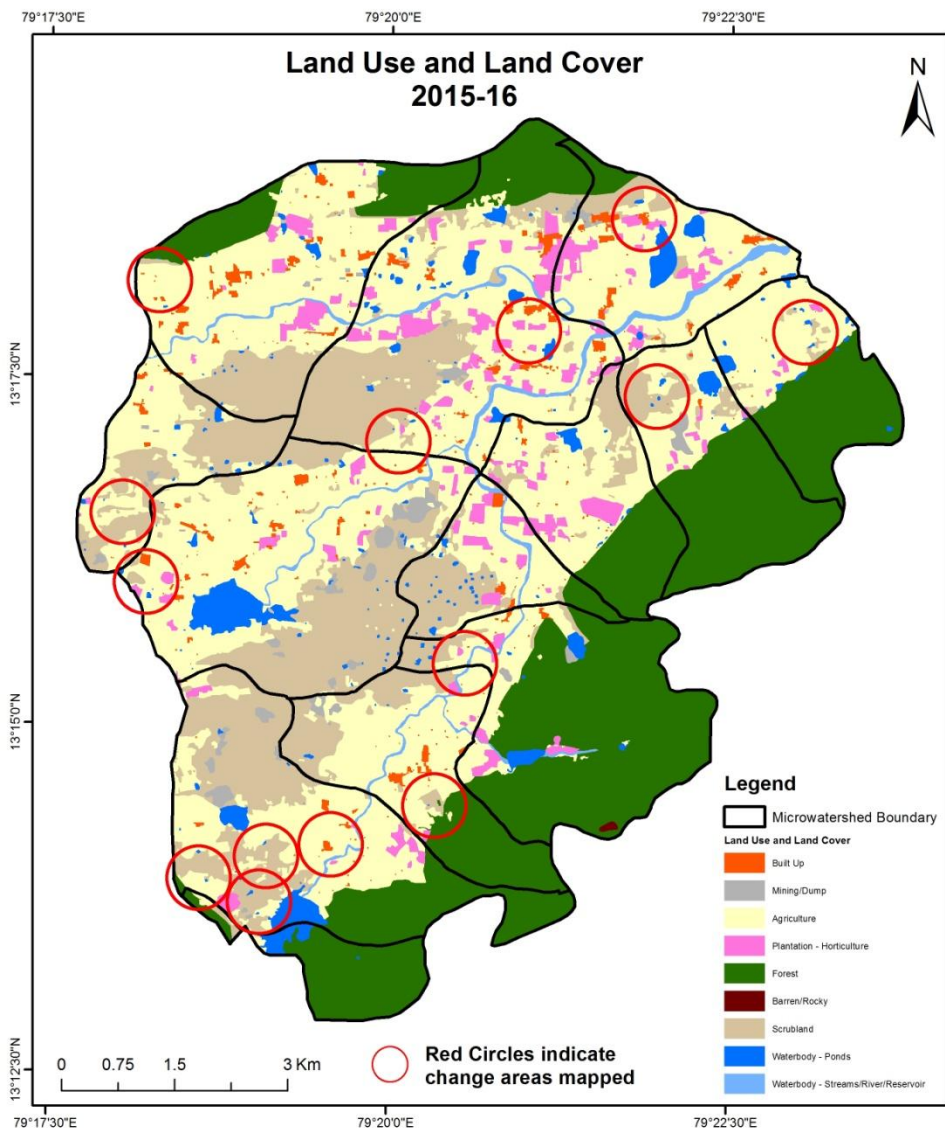
Comparative assessment of Land Use and Land Cover for Pre and Post IWMP implementation (2014-15 to 2015-16)

Scale: 1:10000



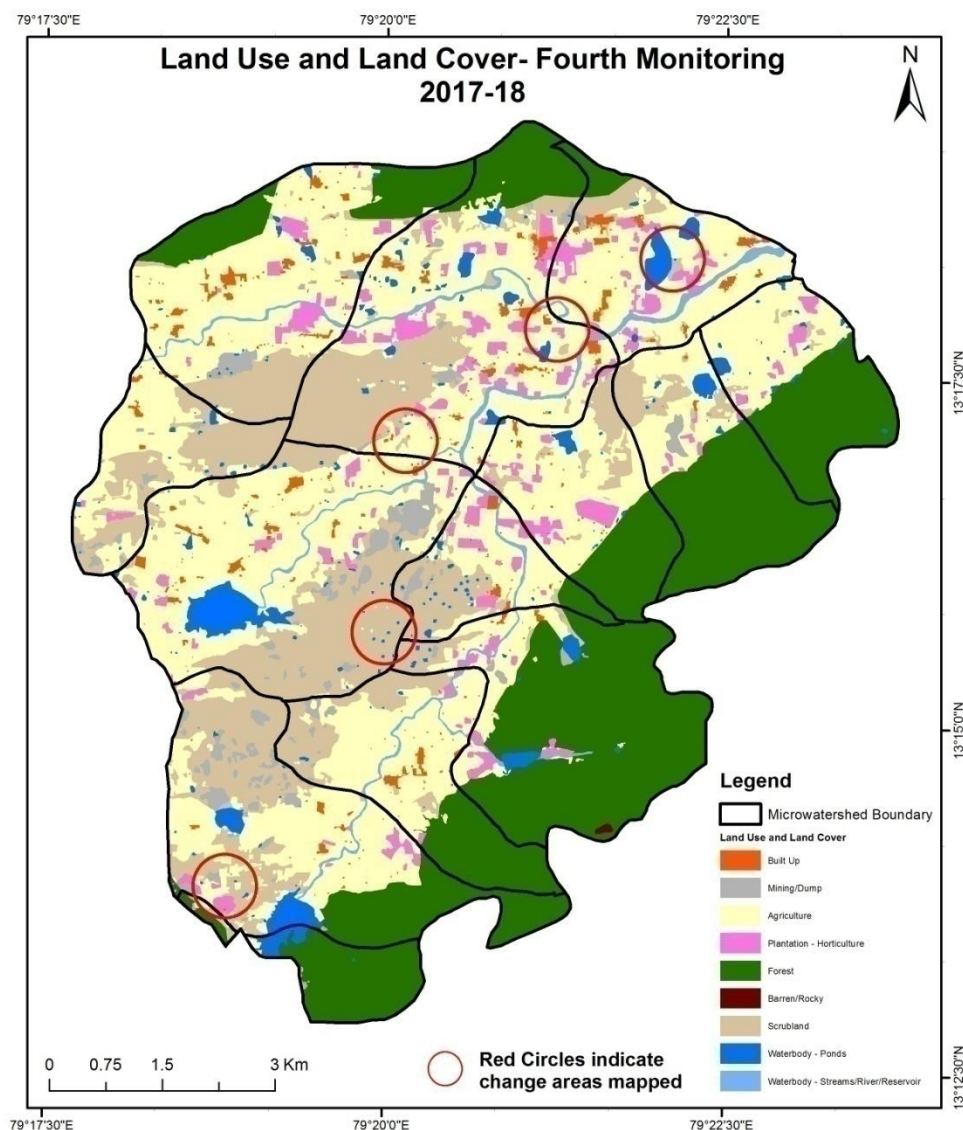
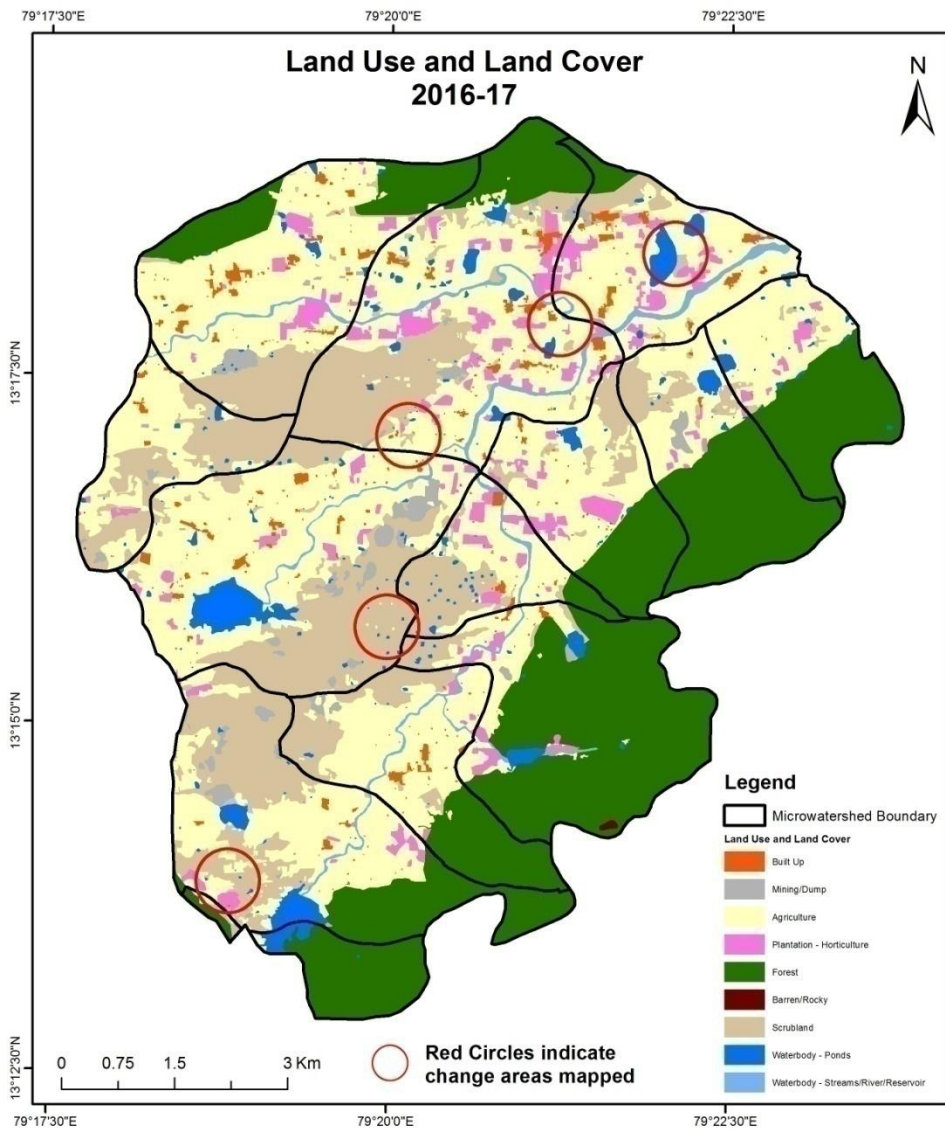
Comparative assessment of Land Use and Land Cover for Pre and Post IWMP implementation (2015-16 to 2016-17)

Scale: 1:10000



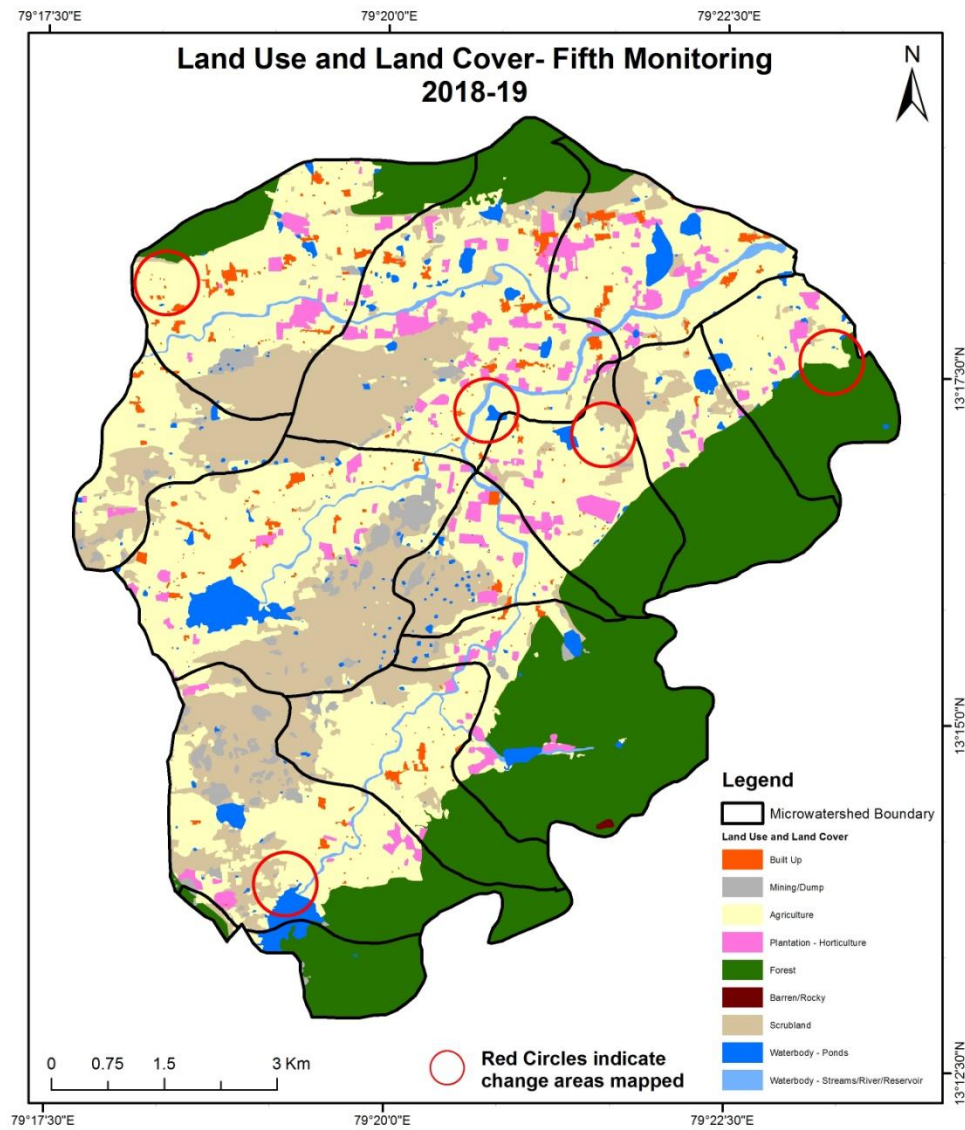
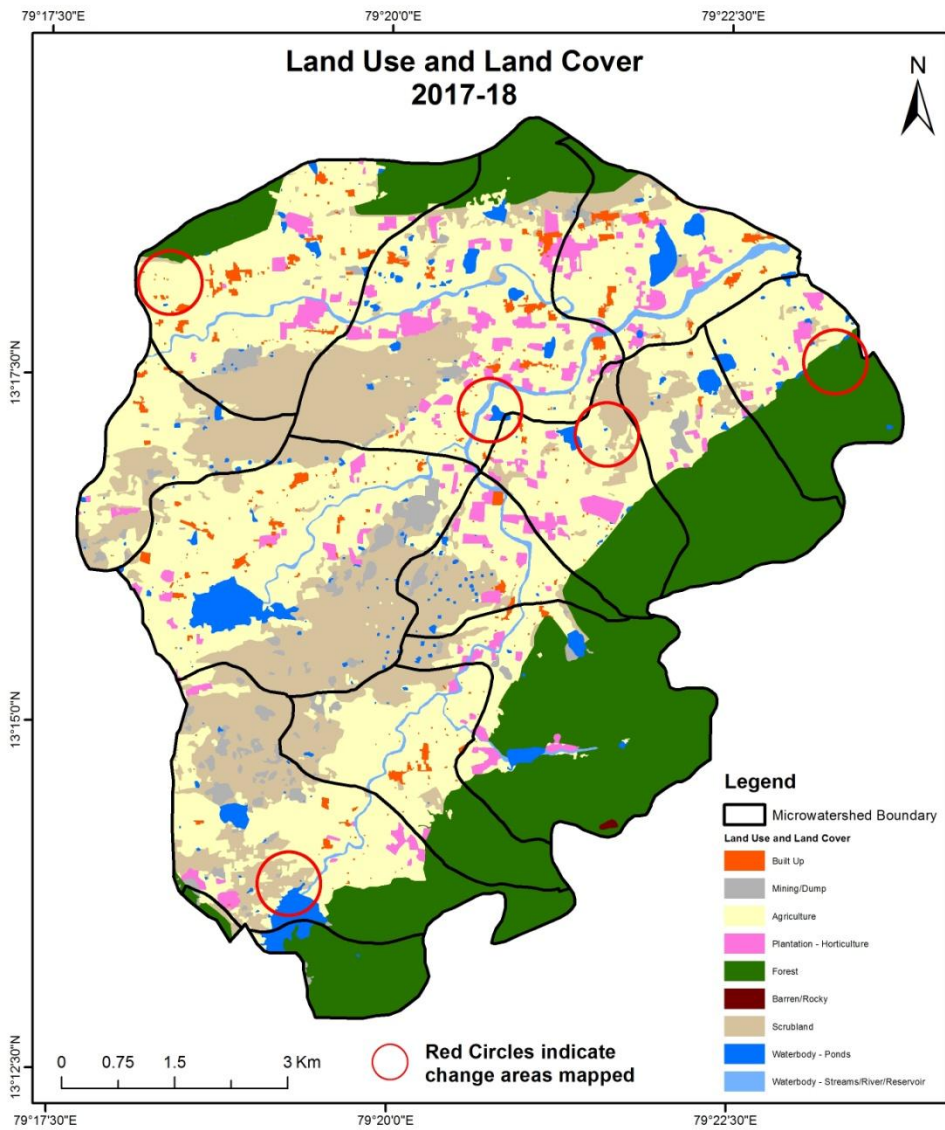
Comparative assessment of Land Use and Land Cover for Pre and Post IWMP implementation (2016-17 to 2017-18)

Scale: 1:10000



Comparative assessment of Land Use and Land Cover for Pre and Post IWMP implementation (2017-18 to 2018-19)

Scale: 1:10000



Land Use and Land Cover changes for Pre and Post treatment dates

Agriculture to Plantation



T2: 2015-16 (79°22'59.141"E 13°17'48.871"N)

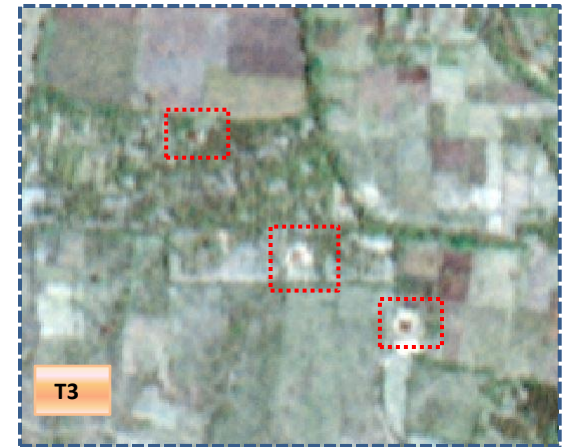


T3: 03 March 2017

Agriculture to Water body



T2: 2015-16 (79°20'41.723"E 13°16'16.884"N)



T3: 03 March 2017

Land Use and Land Cover changes for Pre and Post treatment dates

Agriculture to Plantation



T0: 2010-11



T1: 26 February 2015

Agriculture to Plantation



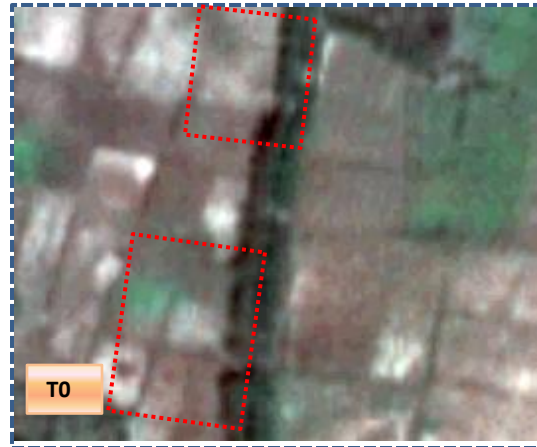
T0: 2010-11



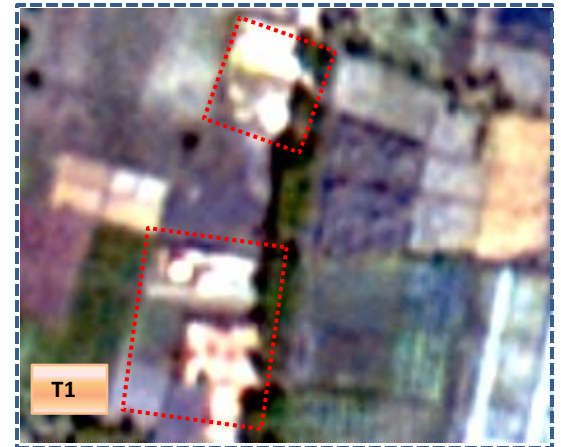
T1: 26 February 2015

Land Use and Land Cover changes for Pre and Post treatment dates

Agriculture to Built-up



T0: 2010-11



T1: 26 February 2015

Agriculture to Plantation



T0: 2010-11



T1: 26 February 2015

Table showing change matrix depicting Land cover transitions during study period-2010-11 to 2014-15

Land cover	Monitoring period (T1)										Units in Hectares		
	Built up	Mining/ dump	Agriculture	Plantation Horticulture	Forest	Forest Plantation	Barren Rocky	Scrub	Waterbody- Streams/River	Water body Ponds	Grand Total		
Built up	74.82												74.82
Mining/dump		52.75											52.75
Agriculture	22.88	2.56	3200.66	0.53				1.07			1.48		3229.17
Plantation Horticulture			3.21	256.46									259.66
Forest			10.82		2210.67						0.14		2221.62
Forest Plantation													
Barren Rocky							2.27						2.27
Scrub	4.27	16.81	112.87					1863.35			12.37		2009.66
Waterbody- Streams/River									118.21				118.21
Waterbody – Ponds			5.26								165.25		170.52
Grand Total	101.97	72.12	3332.81	256.98	2210.67		2.27	1864.42	118.21		179.24		8138.69

- In matrix table diagonal elements represent the both periods in the same class and off diagonal elements represents change in between the classes.
- In T0 28 ha of the agriculture area has decreased and it is converted into plantation, Built-up, mining/dump, scrub and water body in T1.
- In T1 132 ha of the agriculture area has increased from plantation, forest, scrubland and water body area of T0.
- Overall 103 ha of the agriculture area has been increased. The additional agriculture are coming from waterbody in T1 represents seasonal agriculture.

Table showing change matrix depicting Land cover transitions during study period-2014-15 to 2015-16

Land cover	Monitoring period (T2)										Units in Hectares		
T1	Built up	Mining/ dump	Agriculture	Plantation Horticulture	Forest	Forest Plantation	Barren Rocky	Scrub	Waterbody- Streams/River	Water body Ponds	Grand Total		
Built up	101.97												101.97
Mining/dump		71.88									0.24		72.12
Agriculture	15.45	3.50	3207.01	74.19							32.66		3332.81
Plantation Horticulture	0.37		14.88	241.73									256.98
Forest	0.21		25.23		2178.27						6.96		2210.67
Forest Plantation													
Barren Rocky							2.27						2.27
Scrub	0.62	18.18	195.31					1631.63			18.67		1864.42
Waterbody- Streams/River									118.21				118.21
Waterbody – Ponds											179.24		179.24
Grand Total	118.62	93.55	3442.44	315.92	2178.27		2.27	1631.63	118.21		237.77		8138.69

- In matrix table diagonal elements represent the both periods in the same class and off diagonal elements represents change in between the classes.
- In T1 125 ha of the agriculture area has decreased and it is converted into plantation, Built-up, mining/dump, scrub and water body in T2.
- In T2 235 ha of the agriculture area has increased from plantation, forest and scrubland area of T1.
- Overall 109 ha of the agriculture area has been increased. The additional agriculture are coming from waterbody in T2 represents seasonal agriculture.

Table showing change matrix depicting Land cover transitions during study period-2015-16 to 2016-17

Land cover	Monitoring period (T3)										Units in Hectares	
	Built up	Mining/ dump	Agriculture	Plantation Horticulture	Forest	Forest Plantation	Barren Rocky	Scrub	Waterbody- Streams/River	Water body Ponds	Grand Total	
Built up	118.62										118.62	
Mining/dump		93.55									93.55	
Agriculture	4.23	0.29	3401.80	35.54						0.58	3442.44	
Plantation Horticulture	0.15		4.60	311.06						0.10	315.92	
Forest		0.41	0.27		2177.28					0.30	2178.27	
Forest Plantation												
Barren Rocky							2.27				2.27	
Scrub	0.33	22.87	24.32					1584.04		0.08	1631.63	
Waterbody- Streams/River									118.21		118.21	
Waterbody – Ponds										237.77	237.77	
Grand Total	123.33	117.13	3430.99	346.60	2177.28		2.27	1584.04	118.21	238.83	8138.69	

- In matrix table diagonal elements represent the both periods in the same class and off diagonal elements represents change in between the classes.
- In T2 40 ha of the agriculture area has decreased and it is converted into plantation, Built-up, mining/dump and water body in T3.
- In T3 29 ha of the agriculture area has increased from plantation, forest and scrubland area of T2.
- Overall 11 ha of the agriculture area has been decreased. The additional agriculture are coming from waterbody in T3 represents seasonal agriculture.

Table showing change matrix depicting Land cover transitions during study period-2016-17 to 2017-18

Land cover	Monitoring period (T4)										Units in Hectares		
	Built up	Mining/ dump	Agriculture	Plantation Horticulture	Forest	Forest Plantation	Barren Rocky	Scrub	Waterbody- Streams/River	Water body Ponds	Grand Total		
Built up	123.33												123.33
Mining/dump		117.13											117.13
Agriculture	1.22	8.83	3412.27	8.46							0.22		3430.99
Plantation Horticulture	0.13		9.21	337.26									346.60
Forest		2.37			2174.91								2177.28
Forest Plantation													
Barren Rocky							2.27						2.27
Scrub		52.68	4.59	0.64				1526.02			0.11		1584.04
Waterbody- Streams/River									118.21				118.21
Waterbody – Ponds											238.83		238.83
Grand Total	124.68	181.01	3426.07	346.36	2174.91		2.27	1526.02	118.21		239.16		8138.69

- In matrix table diagonal elements represent the both periods in the same class and off diagonal elements represents change in between the classes.
- In T3 18 ha of the agriculture area has decreased and it is converted into plantation, Built-up, mining/dump, plantation and water body in T4.
- In T4 13 ha of the agriculture area has increased from plantation and scrubland area of T3.
- Overall 04 ha of the agriculture area has been decreased. The additional agriculture are coming from waterbody in T4 represents seasonal agriculture.

Table showing change matrix depicting Land cover transitions during study period-2017-18 to 2018-19

Land cover	Monitoring period (T5)										Units in Hectares	
	Built up	Mining/ dump	Agriculture	Plantation Horticulture	Forest	Forest Plantation	Barren Rocky	Scrub	Waterbody- Streams/River	Water body Ponds	Grand Total	
Built up	124.68										124.68	
Mining/dump		181.01									181.01	
Agriculture	0.10		3425.89							0.08	3426.07	
Plantation Horticulture			4.64	341.72							346.36	
Forest			13.12		2161.79						2174.91	
Forest Plantation												
Barren Rocky							2.27				2.27	
Scrub		5.55	35.60					1484.87			1526.02	
Waterbody- Streams/River									118.21		118.21	
Waterbody – Ponds										239.16	239.16	
Grand Total	124.78	186.56	3479.26	341.72	2161.79		2.27	1484.87	118.21	239.24	8138.69	

- In matrix table diagonal elements represent the both periods in the same class and off diagonal elements represents change in between the classes.
- In T4 0.18 ha of the agriculture area has decreased and it is converted into plantation, Built-up and water body in T5.
- In T5 53 ha of the agriculture area has increased from plantation, forest and scrubland area of T4.
- Overall 53 ha of the agriculture area has been decreased. The additional agriculture are coming from waterbody in T5 represents seasonal agriculture.

Conclusion

1. DPR of the project is uploaded on to Bhuvan Portal.
2. The LULC shows that there is an increase in Crop land, Built up area, Reservoir / Tanks & decrease in Scrubland as presented in the change matrix for different years.
3. There is an increase of 68 Hectares in Reservoir / Tanks area as compared between baseline LU/LC data 2010-11 (T0) & 2018-19 (T5) years.
4. There is an increase of 22, 109 & 53 Hectares From T0 to T1, T1-T2 & T4-T5 respectively and overall increase of 250 Hectares in Crop land area as compared between baseline LU/LC data 2010-11 (T0) & 2018-19 (T5) years.
5. There is an increase of 82 ha of the Plantation/Horticulture area has been increased between 2010-11 (T0) & 2018-19 (T5) years.
6. There is a decrease of 524 Hectares in Scrubland area as compared between 2010-11 (T0) & 2018-19 (T5) years.