

MONITORING OF IWMP WATERSHED PROJECTS USING GEO-INFORMATION

SUMMARY REPORT

ANANTAPURAMU -55/2011-12
Andhra Pradesh

Submitted to NRSC, Balanagar, Hyderabad
January-2022

T 0 - T 1 - T 2 - T 3 - T 4 - T 5



AGRICULTURE & SOIL
DIVISION
Andhra Pradesh Space
Applications Centre (APSAC)
ITE&C Department Govt. of
Andhra Pradesh



RURAL DEVELOPMENT AND
WATERSHED MONITORING
DIVISION
Land Resources and Land Use
Mapping and Monitoring Group,
Remote Sensing Application Area,
National Remote Sensing Centre, ISRO



DEPARTMENT OF LAND
RESOURCES
Ministry of Rural Development
Government of India

C O N T E N T S

- **EXECUTIVE SUMMARY**

01. STUDY AREA
02. SATELLITE & ANCILLARY DATA INCLUDING DRISHTI STATUS
03. MONITORING IN THE PROJECT AREA : Site wise changes in the project
04. CONCLUSIONS

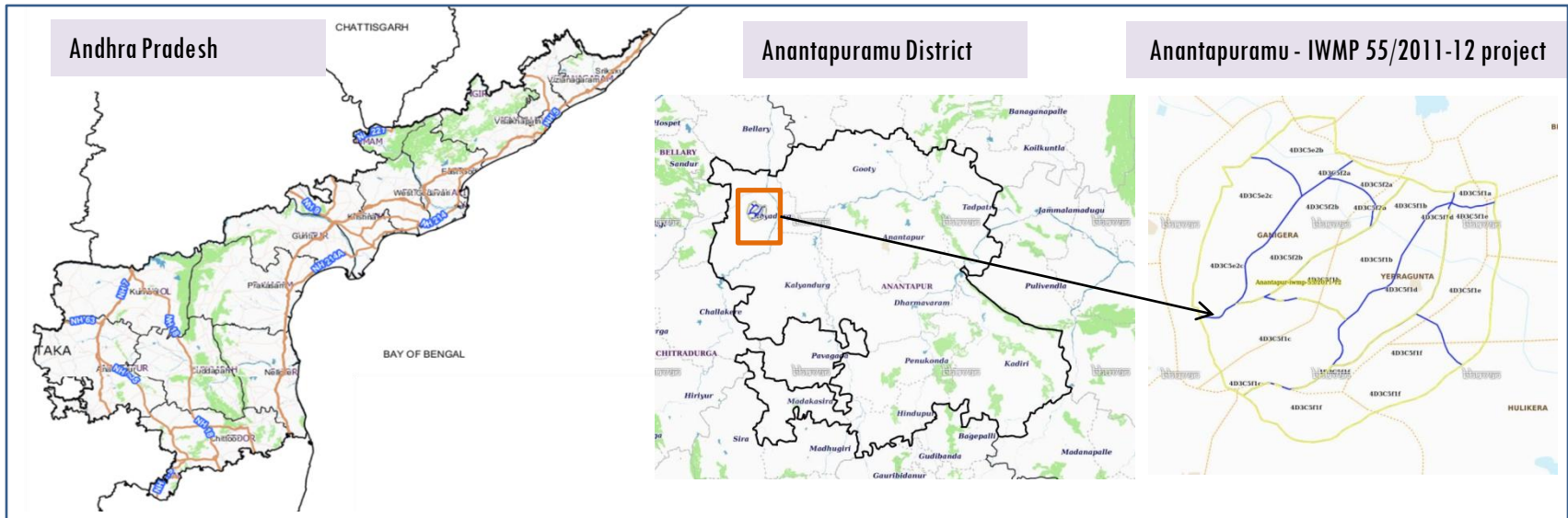
E X E C U T I V E S U M M A R Y

- Integrated Watersheds Management Project (IWMP) is a flagship programme of Department of Land Resources (DoLR), Ministry of Rural Development (MRD).
- National Remote Sensing Centre (NRSC), ISRO has designed and developed Bhuvan Geo-ICT Web portal tools namely - Srishti and Drishti for monitoring and evaluation of IWMP watersheds. It uses high spatial and temporal resolution sensors viz., Carto-1/2(2.5 m) , LISS-IV(5.8 m color).
- Current summary report gives details of Project - IWMP-55/2011-12, Anantapuramu District of Andhra Pradesh. The total geographical area of the project is 7048.42 ha. It comprises of 10 micro watersheds.
- In the project area 206 Drishti photos were uploaded showing check dams/Rock fill dam, livelihood activities, and remaining showing other activities.
- Water bodies have shown an increased by 5.1 ha , which correspond to the other land use classes that have been converted into various water bodies in this period.
- Major percentage i.e. 93 % is covered by the agriculture, 1.5 % is covered by Scrub land, 1.1 % is covered by water body and remaining by other land use classes.

PROJECT : ANANTAPURAMU - IWMP-55/2011-12

DISTRICT : ANANTAPURAMU , STATE : ANDHRA PRADESH

- The study area falls in Kanekal Mandal of Anantapuramu district of Andhra Pradesh state. The total geographical area of the project is 7048.42 ha. It comprises of 10 micro watersheds. Location Map of the study area is shown in Figure below. Analysis is done for 2011-12 (T0) period (*Batch -1*) projects taking 2019-20 (T5) period satellite images



- Anantapuram has a semi-arid climate, with hot and dry conditions for most of the year. Summers start in late February and peak in May with average high temperatures around the 37 °C range and it reaches around 44 °C to 45 °C.
- Anantapuram gets pre-monsoon showers starting as early as March, mainly through north-easterly winds blowing in from Kerala. Monsoon arrives in September and lasts until early November with about 250 mm (9.8 in) of precipitation. A dry and mild winter starts in late November and lasts until early February; with little humidity and average temperatures in the 22-23 °C (72-73 °F) range. Total annual rainfall is about 22 in (560 mm).
- Anantapuram district receives moderate to good rainfall from July to October month.

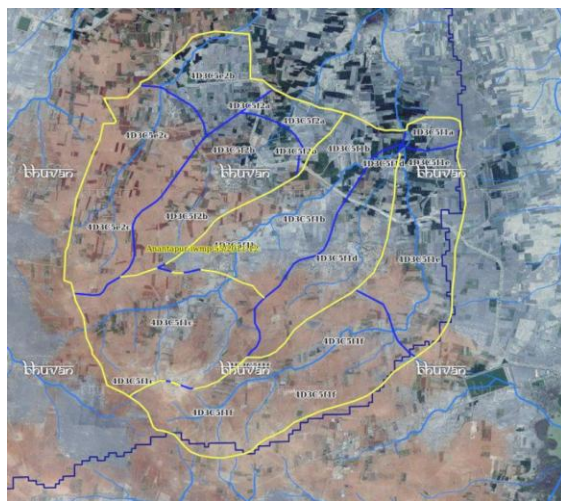
Satellite Data and Ancillary Data

Satellite data*	T0-A**	T0-B**	T5
	2011-12	2013-14	2019-20
LISS IV	2011-12		
SCENE 1			1-Apr-20
SCENE2			
SCENE 3			
SCENE 4			
CARTO	2011-12		
SCENE 1			1-Apr-20
SCENE2			
SCENE 3			
SCENE 4			

Ancillary Data

	Category	Sub category	Status
1	Thematic maps		
	LULC (1: 10 000)		
		DRAIANGE	YES
		SETTLEMENT	YES
		ROADS/RAILS	No
	LULC (1: 50 000)		
		2005-06	
		2008-09	
2	Activity Plan Maps		
3	Drishhti Photographs		
		Total	206
4	Detailed Project Report		

Natural Color Composite overlaid with Project boundaries and high detail stream network



Legend



Drainage (1:10000 Scale)

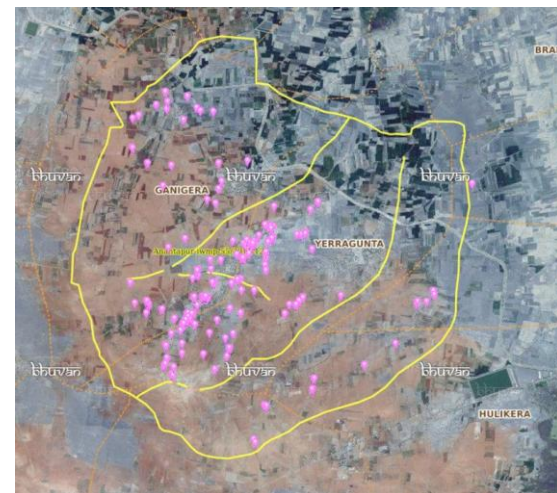


MWS Boundary



Project Boundary

Natural Color Composite overlaid with Drishhti Points



Drishhti Upload Status

Classification of the Activities

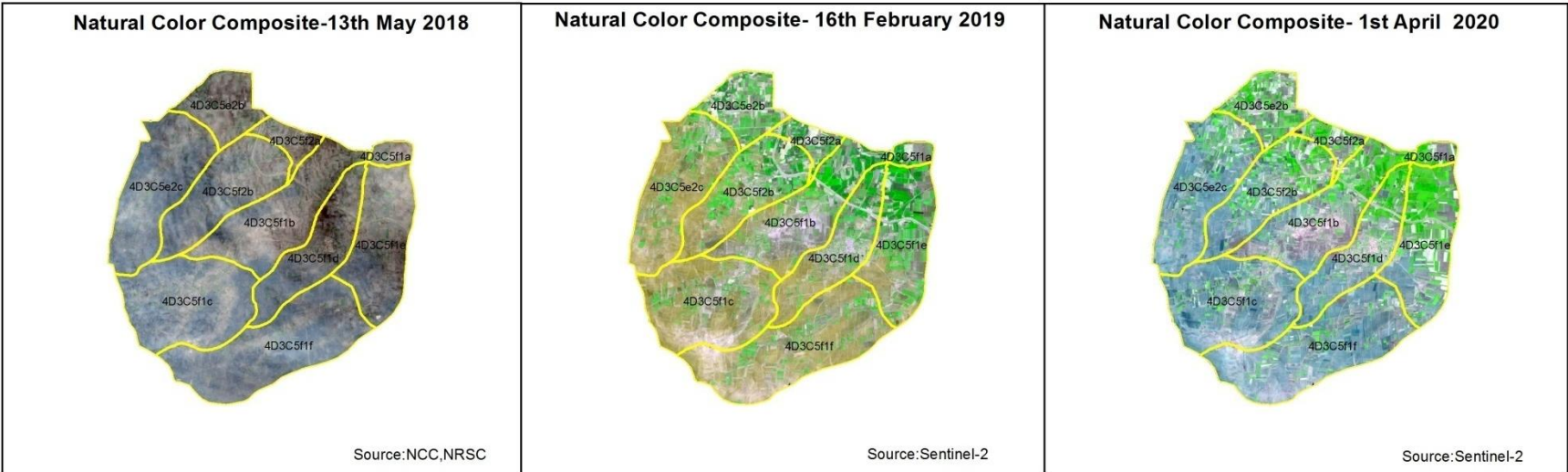
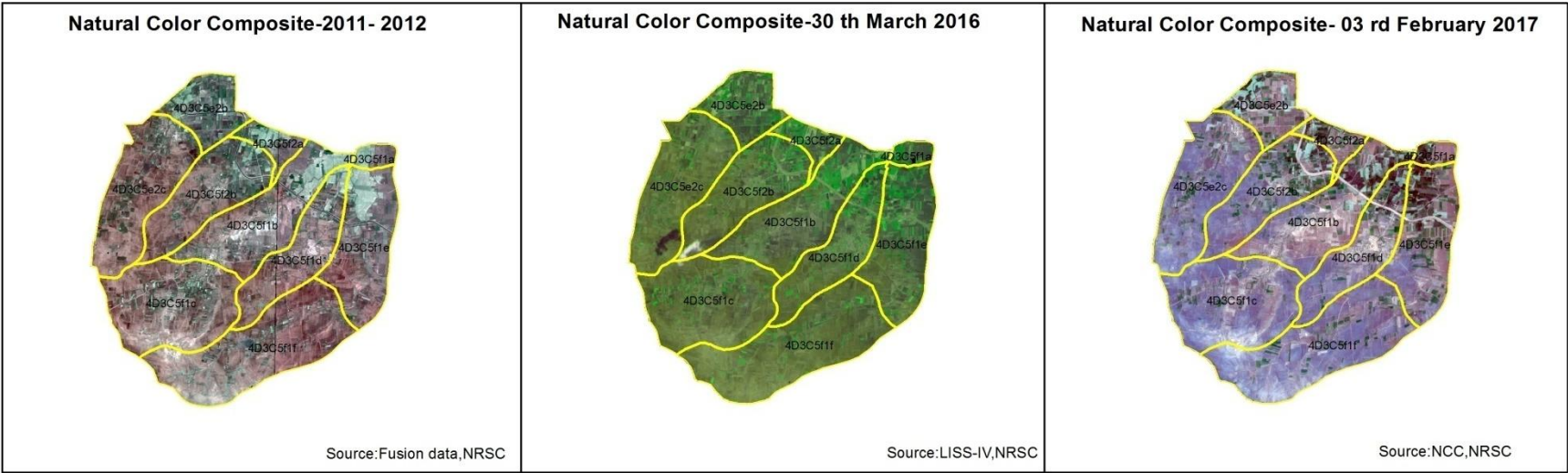
Sr. No	Activity	Drishti Photo	Visible on satellite
1	Afforestation	1	1
2	Horticulture	0	0
3	Agriculture	1	1
4	Pasture	0	0
5	Trench	0	0
6	Field Bunds	0	0
7	Terrace	0	0
8	Checks & Plugs	19	18
9	Gabion structure	0	0
10	Farm ponds/Dug out pit	12	12
11	Civil work-Check dams/Rock fill dam	95	92
12	Nallah Bunds/Drainage treatment	0	0
13	Percolation tanks / Ground water recharge structure	0	0
14	Production System and Micro-Enterprises	0	0
15	Livelihood Activities-Plantation/Horticulture	0	0
16	Capacity Building Activities	0	0
17	Entry Point Activity	0	0
18	Others	87	82
	TOTAL	215	206

MONITORING IN THE PROJECT AREA

Site Wise Changes in the Project

- Impacts of the activities carried out are presented through combination of Drishti and Srishti captures.
- T0 is the baseline period before implementation (2011-12) and T5 is 2019-20 period for monitoring.
- Captures are also provided wherever changes are observed in satellite images, that may match expected activity related impact, even though they don't have Drishti report yet.

Natural Colour Composite (NCC)



Monitoring of activities in Anantapuram Dt Andhra Pradesh. IWMP-55/2011-12



T0

T0: 2011-12



T1

T1: 23 March 2017



Drishti SI no. 1025456 MWS : 4D3C5f1b

Check dam



T0

T0: 2011-12



T1

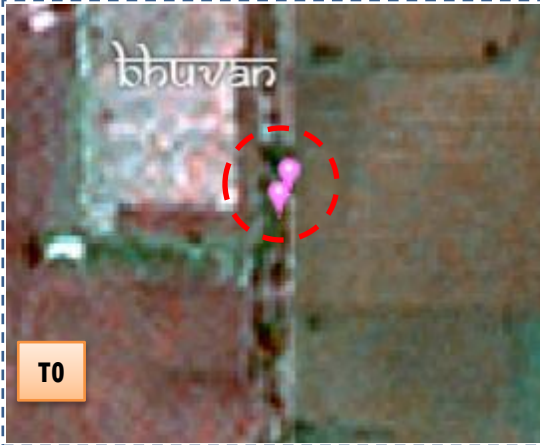
T1: 23 March 2017



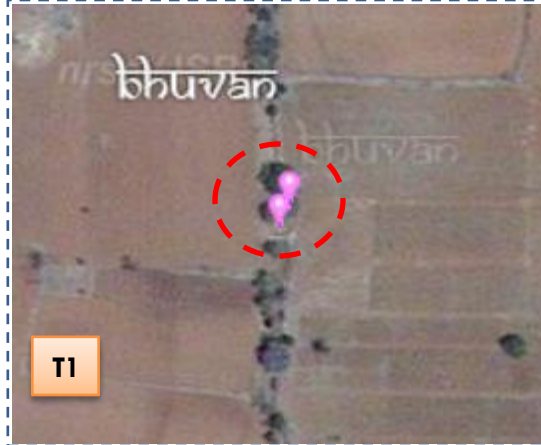
Drishti SI no. 1033776 MWS : 4D3C5f2b

Check dam

Monitoring of activities in Anantapuram Dt Andhra Pradesh. IWMP-55/2011-12



T0: 2011-12

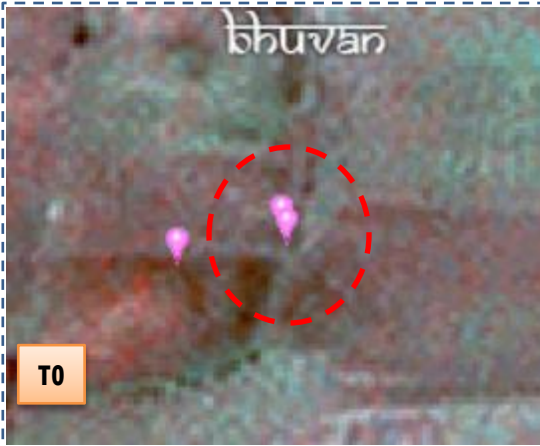


T1: 23 March 2017



Drishti Sl no. 2486076 MWS : 4D3C5f1f

Check dam



T0: 2011-12



T1: 23 March 2017



Drishti Sl no. 7017342 MWS : 4D3C5f1c

Farm Pond

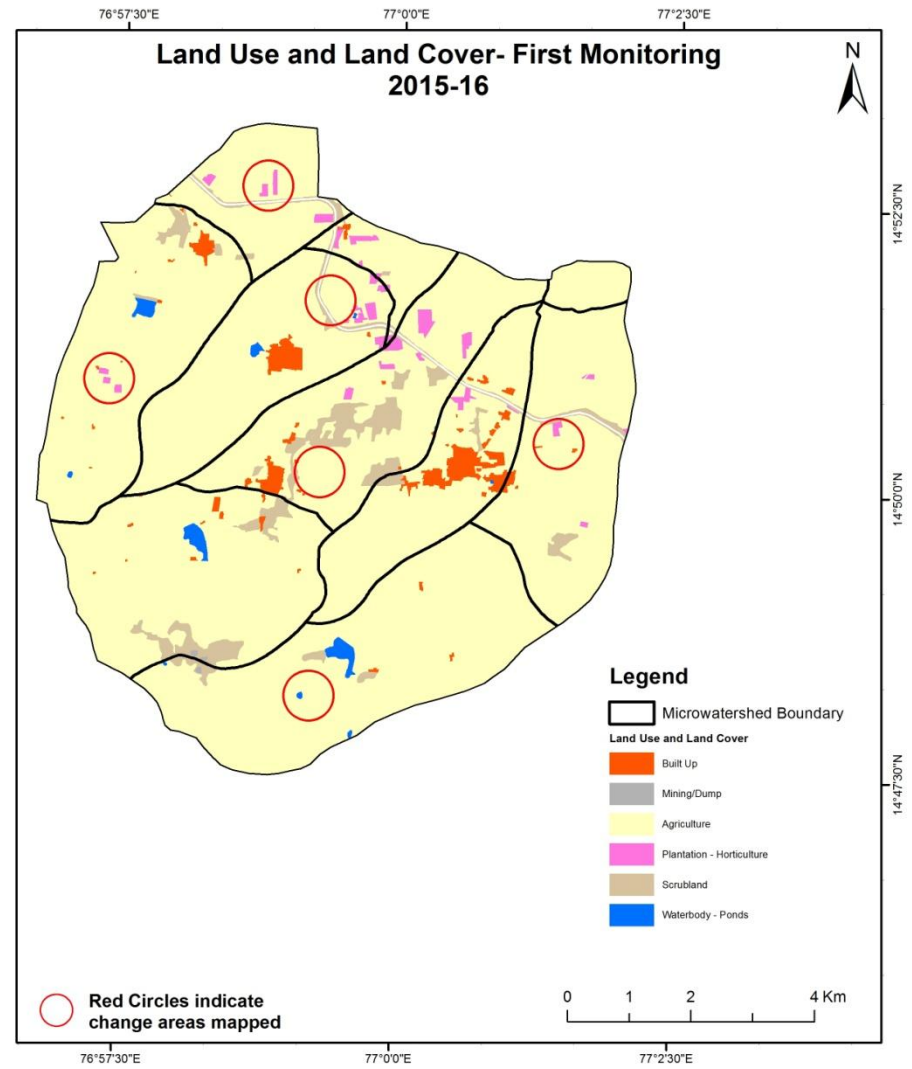
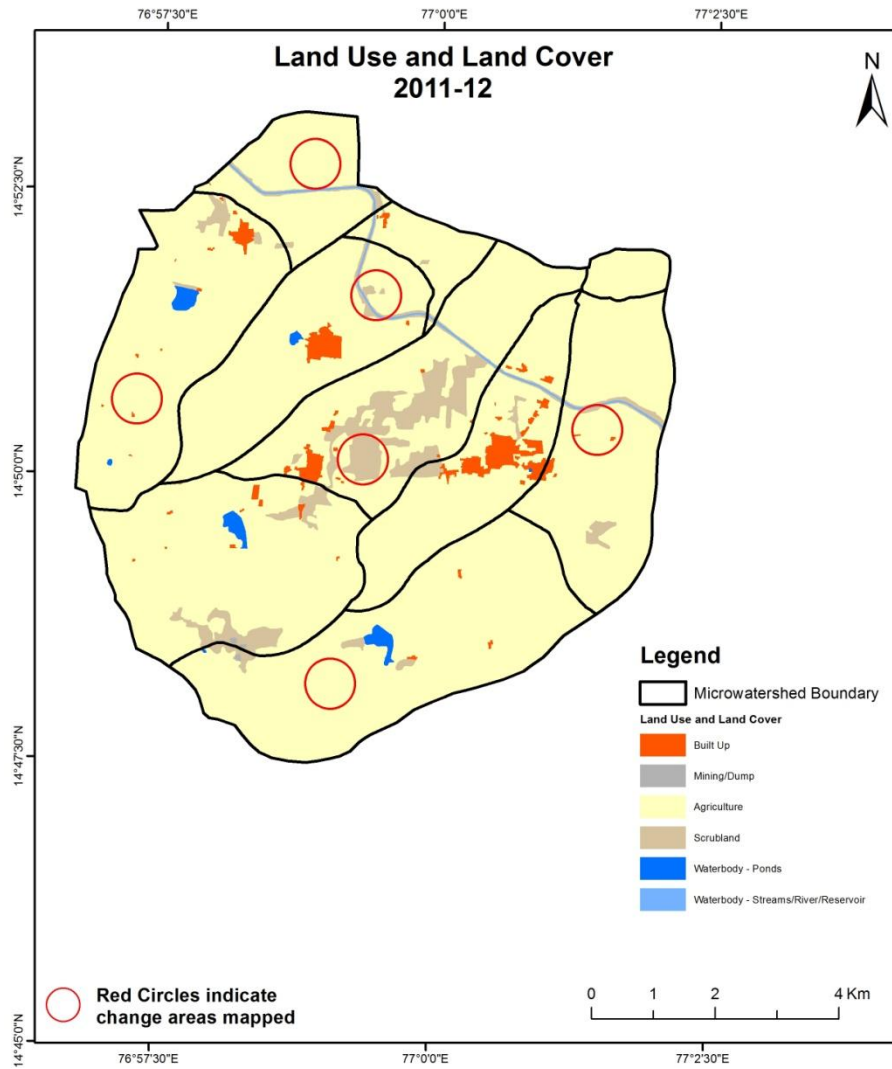
MONITORING IN THE PROJECT AREA

Land use and Land cover Changes in the Project

- Change in land use and land cover from T0 to T5 are analyzed in terms of built up, mining/dump, agriculture, plantation- horticulture, forest, barren rocky waterbody-streams/river/reservoir and waterbody -ponds.
- Captures are also provided wherever changes are observed in satellite images, that may match expected activity related impact, even though they don't have Drishti report yet.
- The result obtained for the period T0 to T5 are given in the change matrix table.
- In matrix table column represents the T0 (2011-12) and row represents the T5 (2019-20)

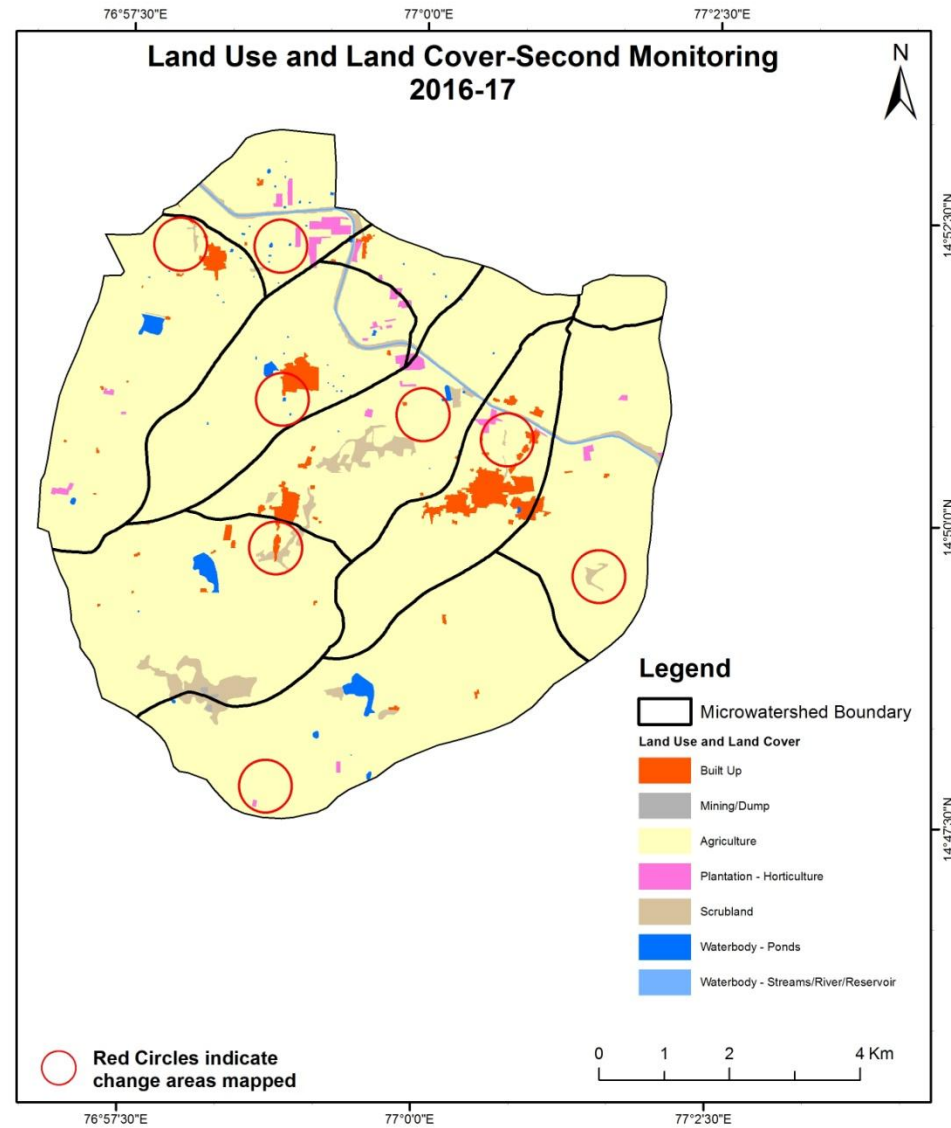
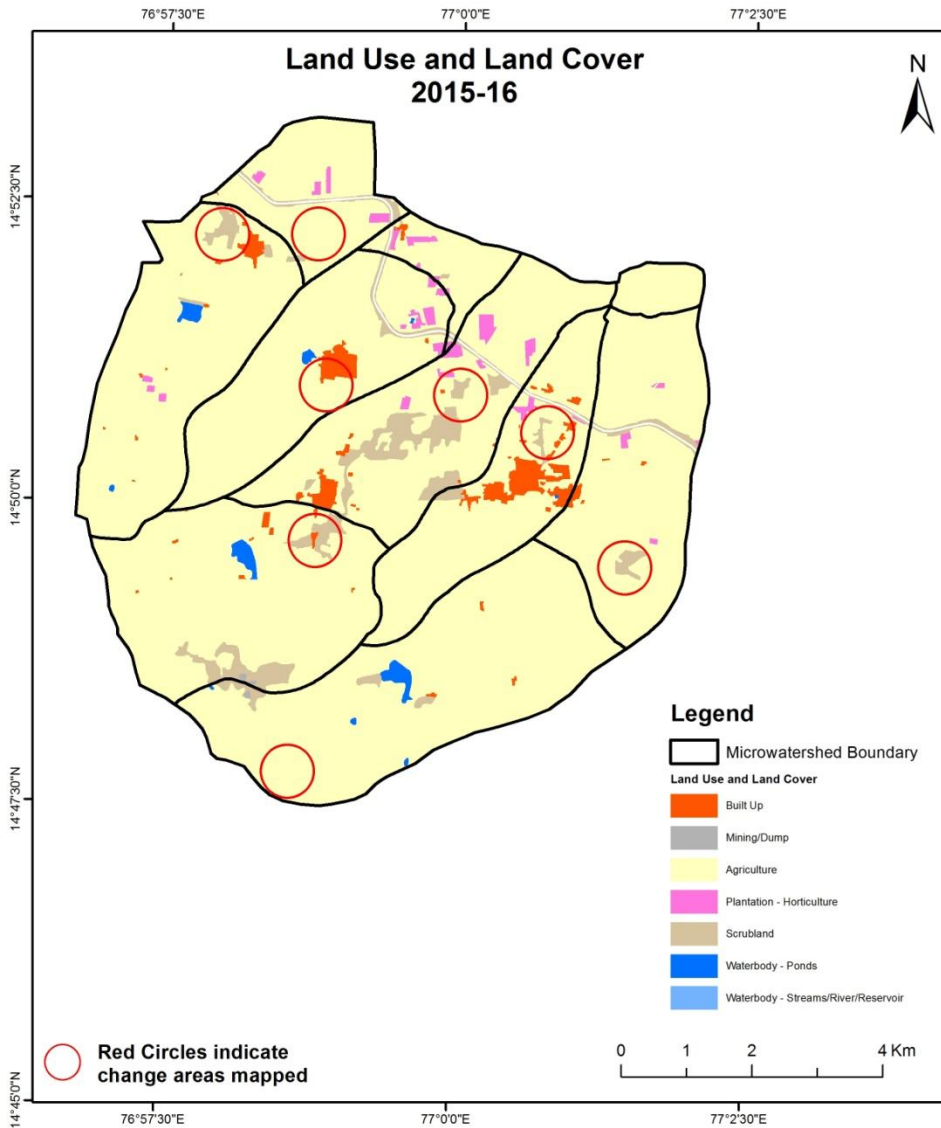
Comparative assessment of Land Use and Land Cover for Pre and Post IWMP implementation (2011-12 to 2015-16)

Scale: 1:10000



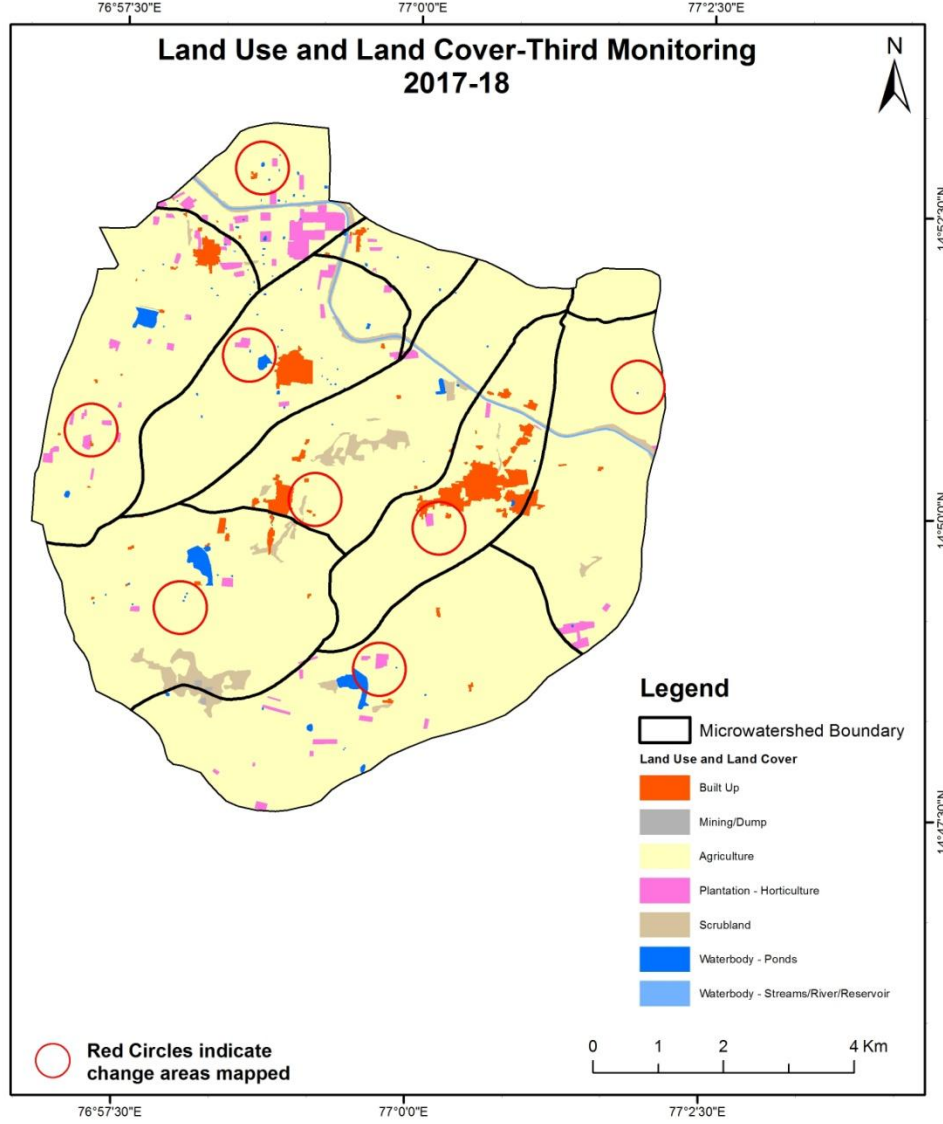
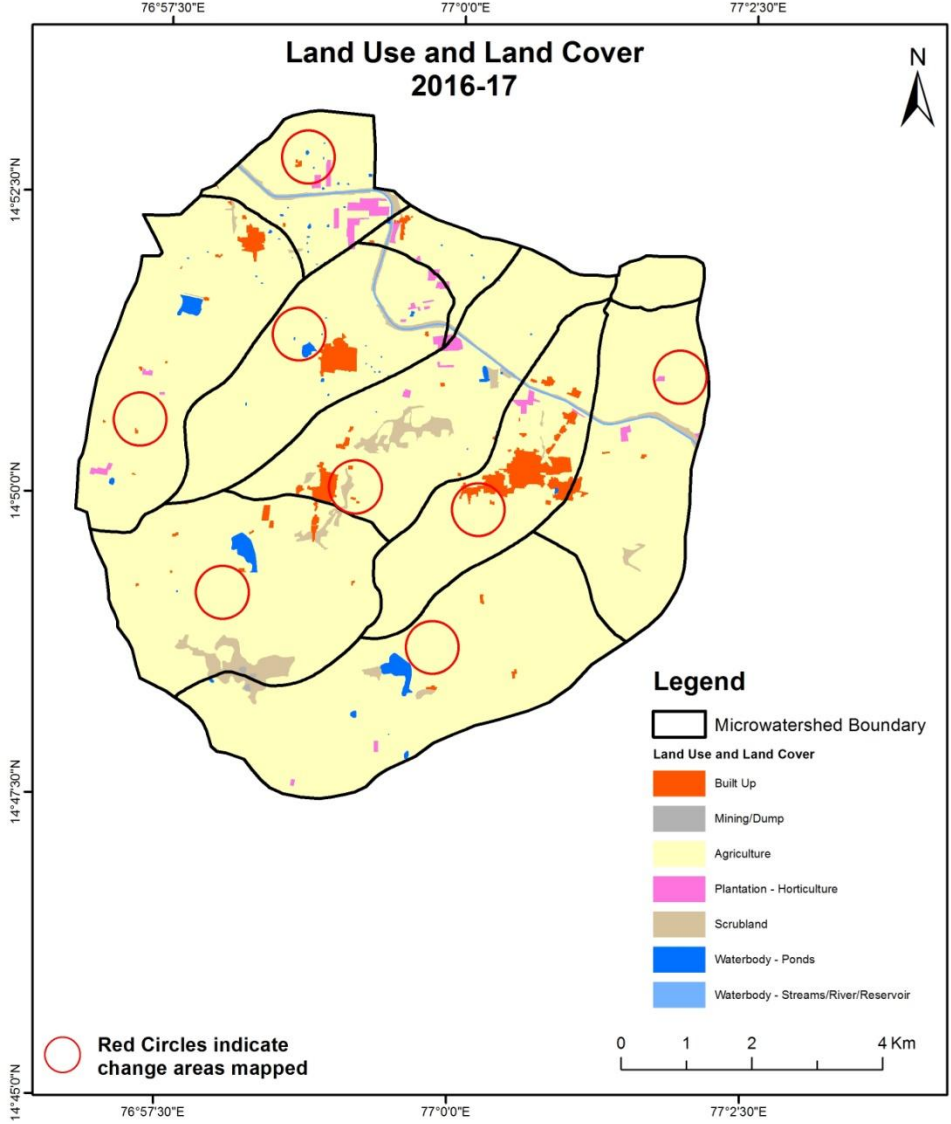
Comparative assessment of Land Use and Land Cover for Pre and Post IWMP implementation (2015-16 to 2016-17)

Scale: 1:10000



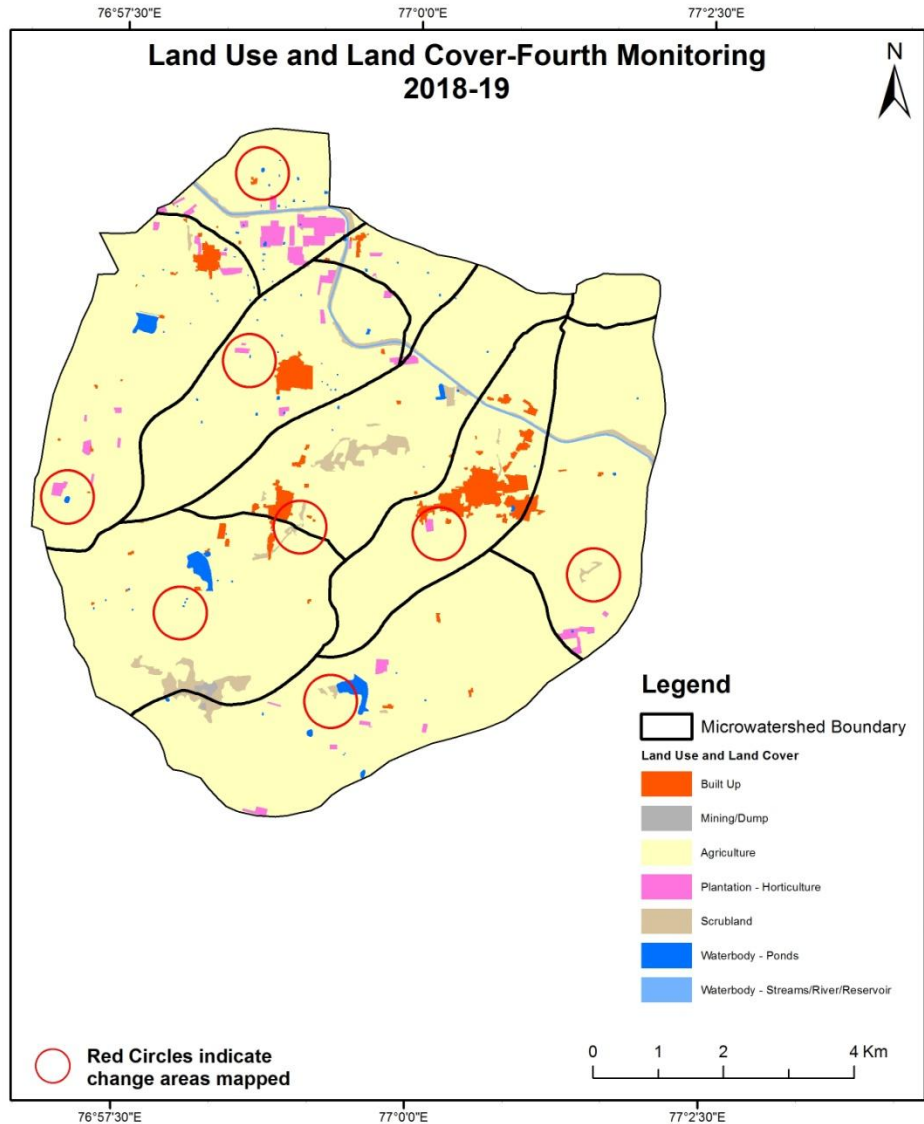
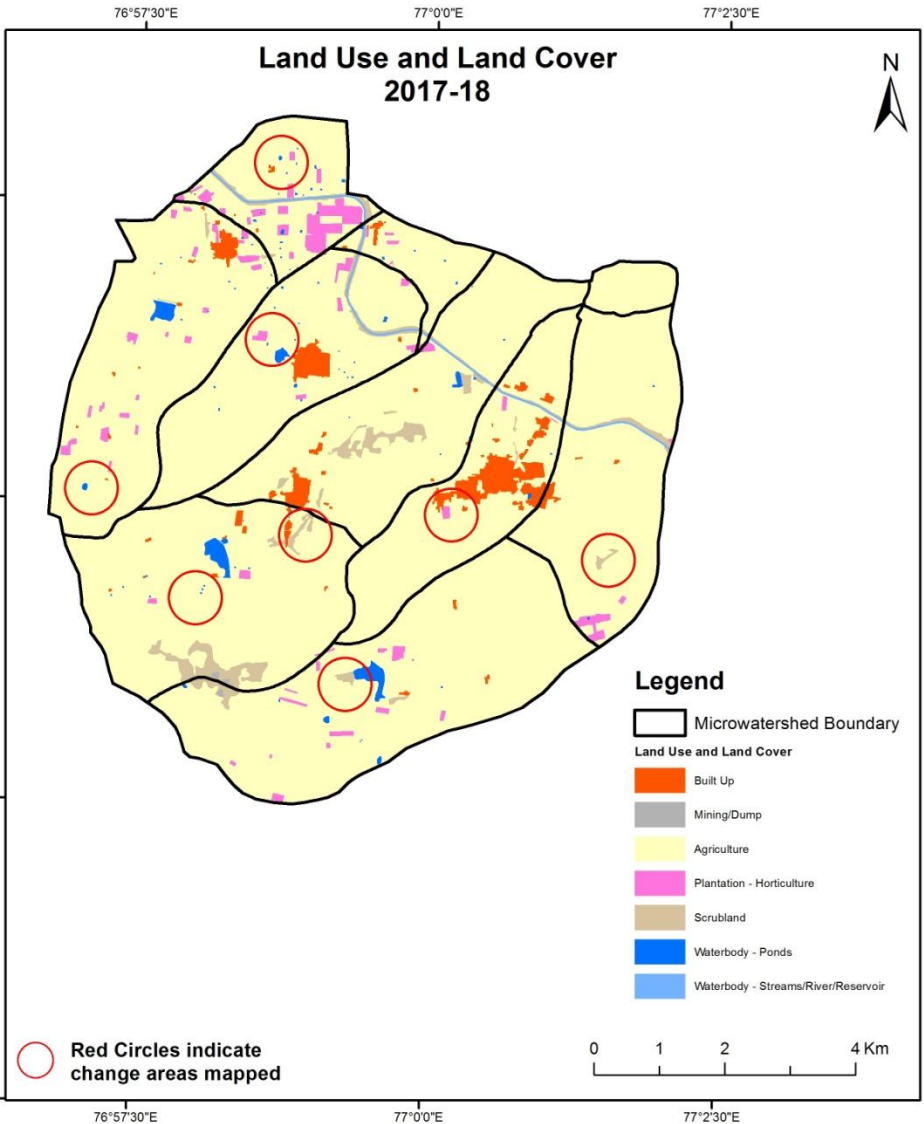
Comparative assessment of Land Use and Land Cover for Pre and Post IWMP implementation (2016-17 to 2017-18)

Scale: 1:10000



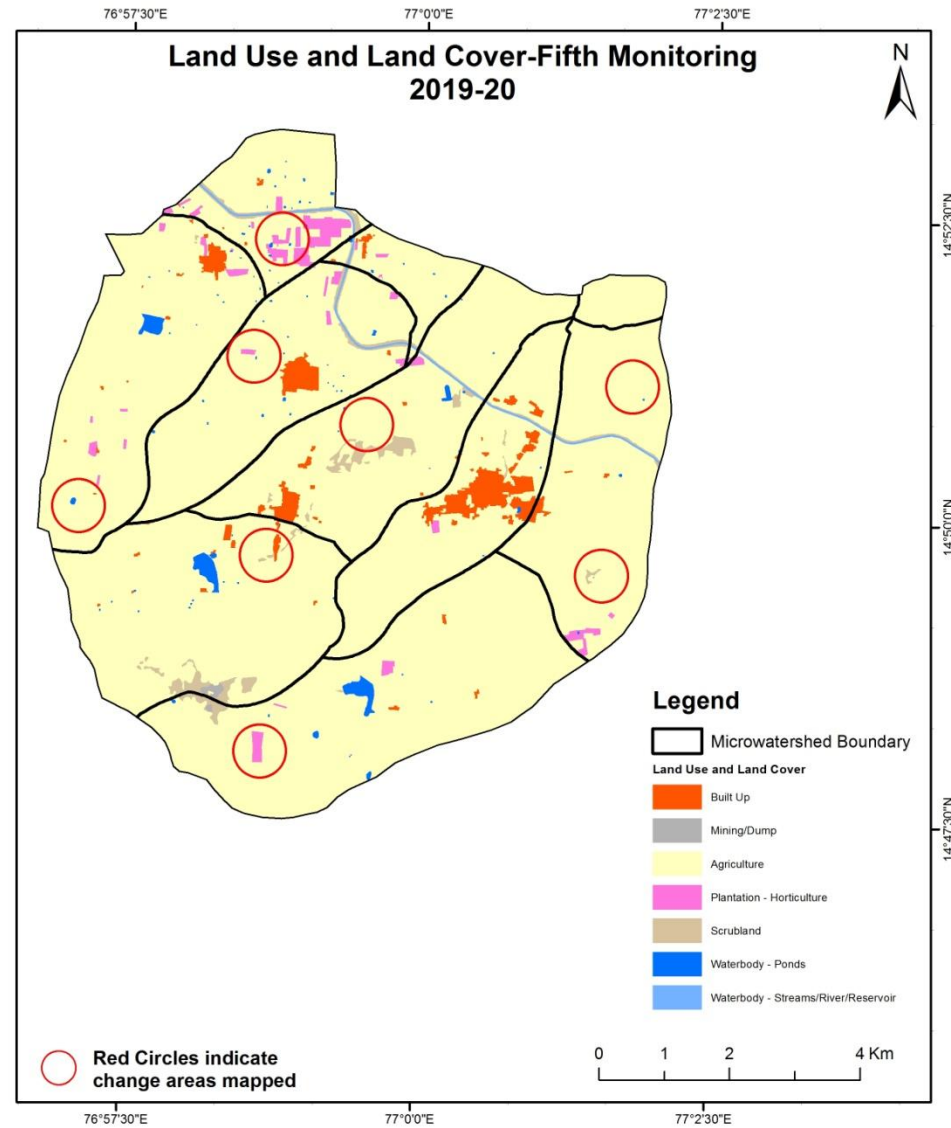
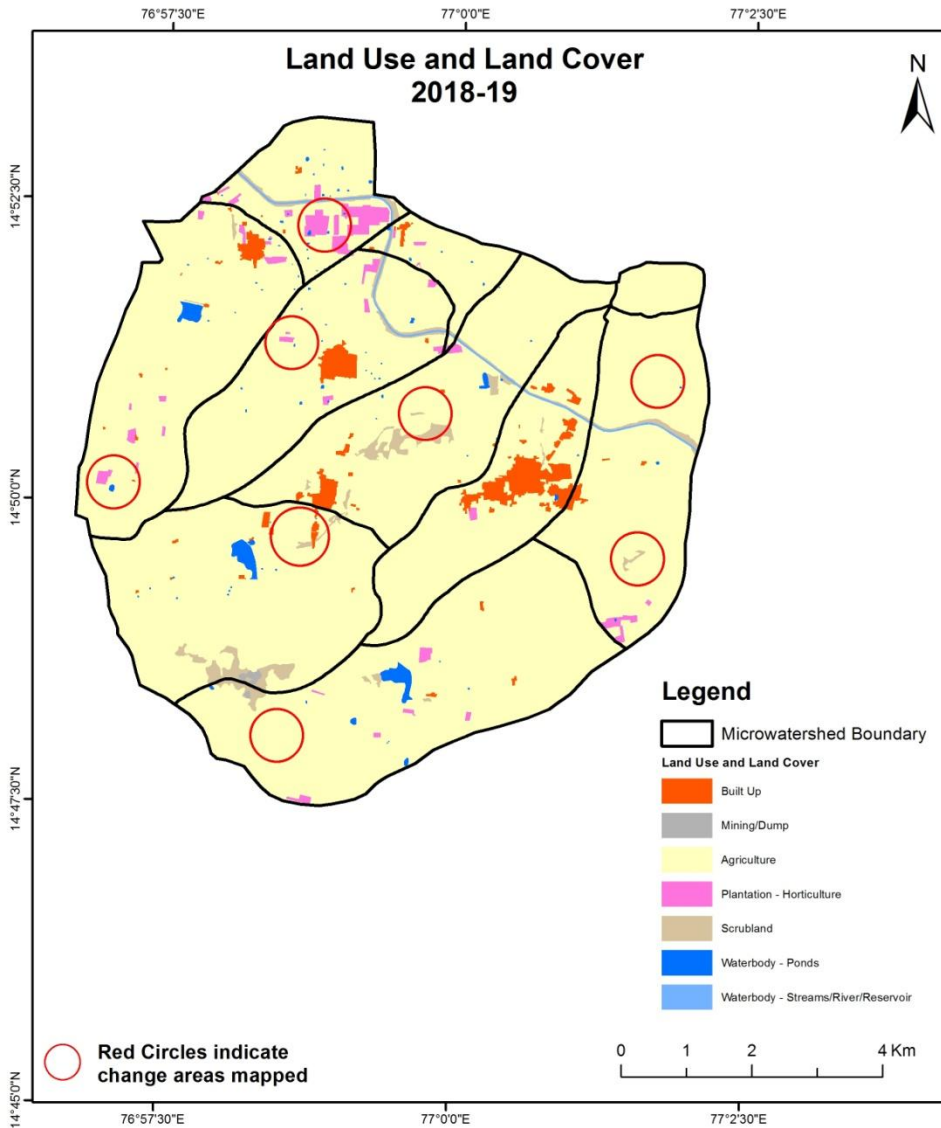
Comparative assessment of Land Use and Land Cover for Pre and Post IWMP implementation (2017-18 to 2018-19)

Scale: 1:10000



Comparative assessment of Land Use and Land Cover for Pre and Post IWMP implementation (2018-19 to 2019-20)

Scale: 1:10000

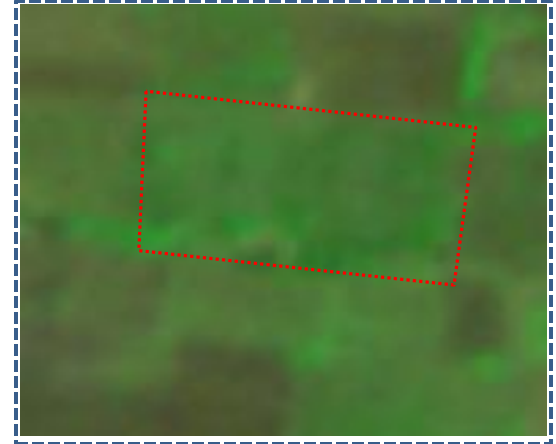


Land Use and Land Cover changes for Pre and Post treatment dates

Agriculture to Plantation



T0: 2011-12 (76°57'19.301"E 14°50'59.995"N)



T1: 30 March 2016

Agriculture to Plantation



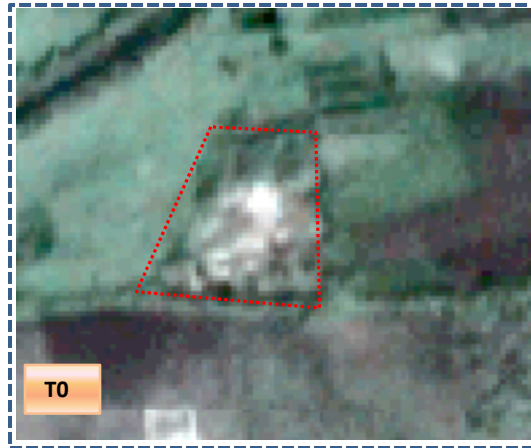
T0: 2011-12 (76°58'14.003"E 14°52'41.439"N)



T1: 30 March 2016

Land Use and Land Cover changes for Pre and Post treatment dates

Scrub to Agriculture

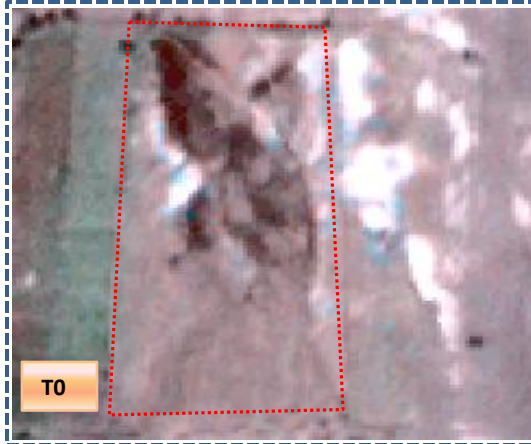


T0: 2011-12 (76°59'28.431"E 14°51'38.501"N)

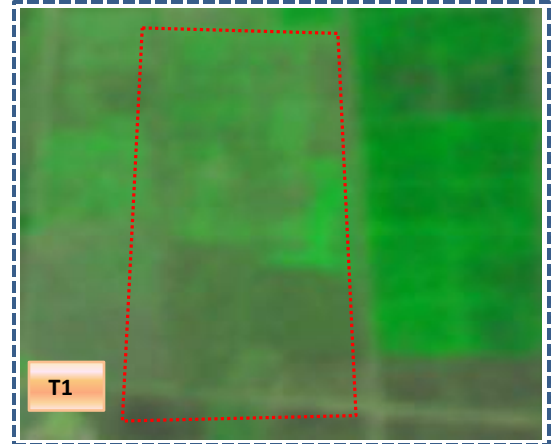


T1: 30 March 2016

Scrub to Agriculture



T0: 2011-12 (77°0'7.891"E 14°50'54.811"N)



T1: 30 March 2016

Table showing change matrix depicting Land cover transitions during study period-2011-12 to 2015-16

Land cover	Monitoring period (T1)										Units in Hectares		
	Built up	Mining/ dump	Agriculture	Plantation Horticulture	Forest	Forest Plantation	Barren Rocky	Scrub	Waterbody- Streams/River	Water body Ponds	Grand Total		
T0													
Built up	137.68												137.68
Mining/dump		2.66											2.66
Agriculture			6364.58	75.02							2.21		6441.81
Plantation Horticulture													
Forest													
Forest Plantation													
Barren Rocky													
Scrub			91.15					301.26					392.41
Waterbody- Streams/River									30.28				30.28
Waterbody – Ponds			4.01								39.56		43.57
Grand Total	137.68	2.66	6459.74	75.02				301.26	30.28		41.77		7048.42

- In matrix table diagonal elements represent the both periods in the same class and off diagonal elements represents change in between the classes.
- In T0 77 ha of the agriculture area has decreased and it is converted into plantation and water body in T1.
- In T1 91 ha of the agriculture area has increased from scrubland and water body of T0.
- The additional agriculture are coming from waterbody in T1 represents seasonal agriculture.

Table showing change matrix depicting Land cover transitions during study period-2015-16 to 2016-17

Land cover	Monitoring period (T2)										Units in Hectares	
	Built up	Mining/ dump	Agriculture	Plantation Horticulture	Forest	Forest Plantation	Barren Rocky	Scrub	Waterbody- Streams/River	Water body Ponds	Grand Total	
T1												
Built up	137.68										137.68	
Mining/dump		2.66									2.66	
Agriculture	15.94		6415.31	21.15						7.35	6459.74	
Plantation Horticulture			32.99	41.95						0.09	75.02	
Forest												
Forest Plantation												
Barren Rocky												
Scrub	1.52		126.02					173.59		0.13	301.26	
Waterbody- Streams/River									30.28		30.28	
Waterbody – Ponds										41.77	41.77	
Grand Total	155.14	2.66	6574.31	63.10				173.59	30.28	49.33	7048.42	

- In matrix table diagonal elements represent the both periods in the same class and off diagonal elements represents change in between the classes.
- In T1 44 ha of the agriculture area has decreased and it is converted into Built-up, plantation and water body in T2.
- In T2 159 ha of the agriculture area has increased from plantations and scrubland of T1. The additional agriculture are coming from waterbody in T2 represents seasonal agriculture.

Table showing change matrix depicting Land cover transitions during study period-2016-17 to 2017-18

Land cover	Monitoring period (T3)										Units in Hectares	
	Built up	Mining/ dump	Agriculture	Plantation Horticulture	Forest	Forest Plantation	Barren Rocky	Scrub	Waterbody- Streams/River	Water body Ponds	Grand Total	
Built up	155.14										155.14	
Mining/dump		2.66									2.66	
Agriculture	8.28		6456.10	106.74						3.18	6574.31	
Plantation Horticulture			33.10	30.01							63.10	
Forest												
Forest Plantation												
Barren Rocky												
Scrub									30.28		30.28	
Waterbody- Streams/River			17.48					156.11			173.59	
Waterbody – Ponds			1.33	0.14						47.86	49.33	
Grand Total	163.42	2.66	6508.02	136.89				156.11	30.28	51.04	7048.42	

- In matrix table diagonal elements represent the both periods in the same class and off diagonal elements represents change in between the classes.
- In T2 118 ha of the agriculture area has decreased and it is converted into Built-up , plantations and water body in T3.
- In T3 33 ha of the agriculture area has increased from plantations and water body of T2.
- The additional agriculture are coming from waterbody in T3 represents seasonal agriculture.

Table showing change matrix depicting Land cover transitions during study period-2017-18 to 2018-19

Land cover	Monitoring period (T4)										Units in Hectares		
	Built up	Mining/ dump	Agriculture	Plantation Horticulture	Forest	Forest Plantation	Barren Rocky	Scrub	Waterbody- Streams/River	Water body Ponds	Grand Total		
T3													
Built up	163.42												163.42
Mining/dump		2.66											2.66
Agriculture	1.29		6488.43	17.73							0.57		6508.02
Plantation Horticulture			49.84	87.05									136.89
Forest													
Forest Plantation													
Barren Rocky													
Scrub		2.83	18.11					135.17					156.11
Waterbody- Streams/River									30.28				30.28
Waterbody – Ponds			3.30								47.73		51.04
Grand Total	164.71	5.49	6559.68	104.78				135.17	30.28		48.31		7048.42

- In matrix table diagonal elements represent the both periods in the same class and off diagonal elements represents change in between the classes.
- In T3 19 ha of the agriculture area has decreased and it is converted into Built-up, plantations and water body in T4.
- In T4 67 ha of the agriculture area has increased from plantations, scrubland and water body of T3.
- The additional agriculture are coming from waterbody in T4 represents seasonal agriculture.

Table showing change matrix depicting Land cover transitions during study period-2018-19 to 2019-20

Land cover	Monitoring period (T5)										Units in Hectares		
	Built up	Mining/ dump	Agriculture	Plantation Horticulture	Forest	Forest Plantation	Barren Rocky	Scrub	Waterbody- Streams/River	Water body Ponds	Grand Total		
T4													
Built up	164.71												164.71
Mining/dump		5.49											5.49
Agriculture	0.46		6547.14	11.69							0.40		6559.68
Plantation Horticulture			22.84	81.94									104.78
Forest													
Forest Plantation													
Barren Rocky													
Scrub									30.28				30.28
Waterbody- Streams/River			25.59					109.58					135.17
Waterbody – Ponds											48.31		48.31
Grand Total	165.16	5.49	6595.57	93.63				109.58	30.28		48.71		7048.42

- In matrix table diagonal elements represent the both periods in the same class and off diagonal elements represents change in between the classes.
- In T4 12 ha of the agriculture area has decreased and it is converted into Built-up, plantations and water body in T5.
- In T5 22 ha of the agriculture area has increased from plantations and scrubland of T4.
- The additional agriculture are coming from waterbody in T5 represents seasonal agriculture.

Conclusion

1. DPR of the project is uploaded on to Bhuvan Portal.
2. The LULC shows that there is an increase in Crop land, Built up area, Reservoir / Tanks & decrease in Scrubland as presented in the change matrix for different years.
3. There is an increase of 5.4 Hectares in Reservoir / Tanks area as compared between baseline LU/LC data 2011-12 (T0) & 2019-20 (T5) years.
4. There is an increase of 17, 114 & 51 Hectares From T0 to T1, T1-T2 & T3 to T4 respectively and overall increase of 153 Hectares in Crop land area as compared between baseline LU/LC data 2011-12 (T0) & 2019-20 (T5) years.
5. There is an increase of 93 ha of the Plantation/Horticulture area has been increased between 2011-12 (T0) & 2019-20 (T5) years.
6. There is a decrease of 282 Hectares in Scrubland area as compared between 2011-12 (T0) & 2019-20 (T5) years.
7. Farm ponds (12) is visible on IWMP Bhuvan Srishti portal out of Bhuvan Drishti photo of Farm ponds (12) verified from the portal.