

MONITORING OF IWMP WATERSHED PROJECTS USING GEO-INFORMATION

SUMMARY REPORT

ANANTAPURAMU -52/2011-12
Andhra Pradesh

Submitted to NRSC, Balanagar, Hyderabad
January-2022

T 0 - T 1 - T 2 - T 3 - T 4 - T 5



AGRICULTURE & SOIL
DIVISION
Andhra Pradesh Space
Applications Centre (APSAC)
ITE&C Department Govt. of
Andhra Pradesh



RURAL DEVELOPMENT AND
WATERSHED MONITORING
DIVISION
Land Resources and Land Use
Mapping and Monitoring Group,
Remote Sensing Application Area,
National Remote Sensing Centre, ISRO



DEPARTMENT OF LAND
RESOURCES
Ministry of Rural Development
Government of India

C O N T E N T S

- **EXECUTIVE SUMMARY**

01. STUDY AREA
02. SATELLITE & ANCILLARY DATA INCLUDING DRISHTI STATUS
03. MONITORING IN THE PROJECT AREA : Site wise changes in the project
04. CONCLUSIONS

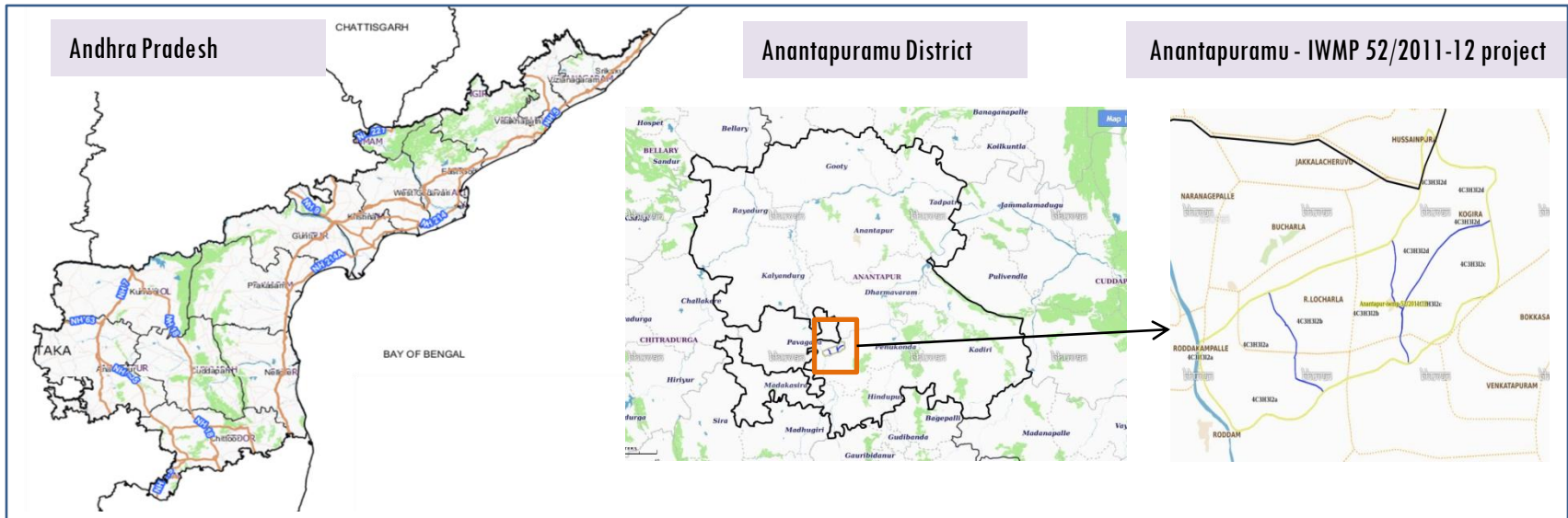
E X E C U T I V E S U M M A R Y

- Integrated Watersheds Management Project (IWMP) is a flagship programme of Department of Land Resources (DoLR), Ministry of Rural Development (MRD).
- National Remote Sensing Centre (NRSC), ISRO has designed and developed Bhuvan Geo-ICT Web portal tools namely - Srishti and Drishti for monitoring and evaluation of IWMP watersheds. It uses high spatial and temporal resolution sensors viz., Carto-1/2(2.5 m) , LISS-IV(5.8 m color).
- Current summary report gives details of Project - IWMP-52/2011-12, Anantapuramu District of Andhra Pradesh. The total geographical area of the project is 4,507 ha. It comprises of 4 micro watersheds.
- In the project area 276 Drishti photos were uploaded showing check dams/Rock fill dam, livelihood activities, and remaining showing other activities.
- Water bodies have shown an increased by 7.7 ha , which correspond to the other land use classes that have been converted into various water bodies in this period.
- Major percentage i.e. 80 % is covered by the agriculture, 11 % is covered by Scrub land, 4 % is covered by water body and remaining by other land use classes.

PROJECT : ANANTAPURAMU - IWMP-52/2011-12

DISTRICT : ANANTAPURAMU , STATE : ANDHRA PRADESH

- The study area falls in Roddam Mandal of Anantapuramu district of Andhra Pradesh state. The total geographical area of the project is 4,507 ha. It comprises of 4 micro watersheds. Location Map of the study area is shown in Figure below. Analysis is done for 2011-12 (T0) period (*Batch -1*) projects taking 2019-20 (T5) period satellite images



- Anantapuram has a semi-arid climate, with hot and dry conditions for most of the year. Summers start in late February and peak in May with average high temperatures around the 37 °C range and it reaches around 44 °C to 45 °C.
- Anantapuram gets pre-monsoon showers starting as early as March, mainly through north-easterly winds blowing in from Kerala. Monsoon arrives in September and lasts until early November with about 250 mm (9.8 in) of precipitation. A dry and mild winter starts in late November and lasts until early February; with little humidity and average temperatures in the 22–23 °C (72–73 °F) range. Total annual rainfall is about 22 in (560 mm).
- Anantapuram district receives moderate to good rainfall from July to October month.

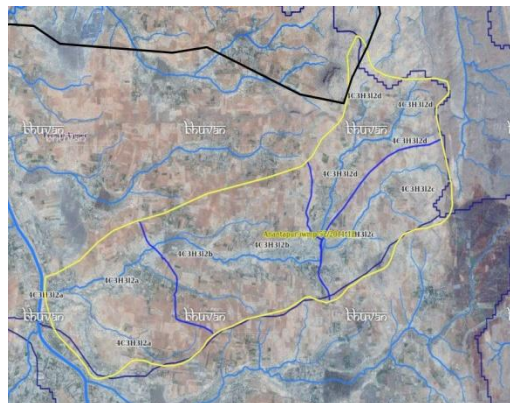
Satellite Data and Ancillary Data

Satellite data*	T0-A**	T0-B**	T5
	2009-10	2011-12	2019-20
LISS IV	2009-10		
SCENE 1			13-Jan-14
SCENE2			02-02-2020
SCENE 3			
SCENE 4			
CARTO	2009-10		
SCENE 1			2-Feb-20
SCENE2			
SCENE 3			
SCENE 4			

Ancillary Data

	Category	Sub category	Status
1	Thematic maps		
	LULC (1: 10 000)		
		DRAIANGE	YES
		SETTLEMENT	YES
		ROADS/RAILS	No
	LULC (1: 50 000)		
		2005-06	
		2008-09	
2	Activity Plan Maps		
3	Drishiti Photographs		
		Total	276
4	Detailed Project Report		

Natural Color Composite overlaid with Project boundaries and high detail stream network



Legend



Drainage (1:10000 Scale)

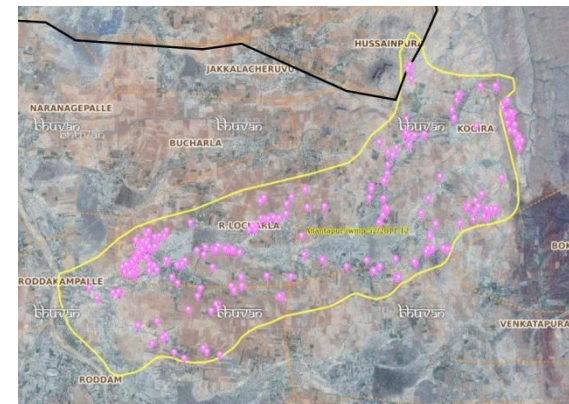


MWS Boundary



Project Boundary

Natural Color Composite overlaid with Drishiti Points



Drishiti Upload Status

Classification of the Activities

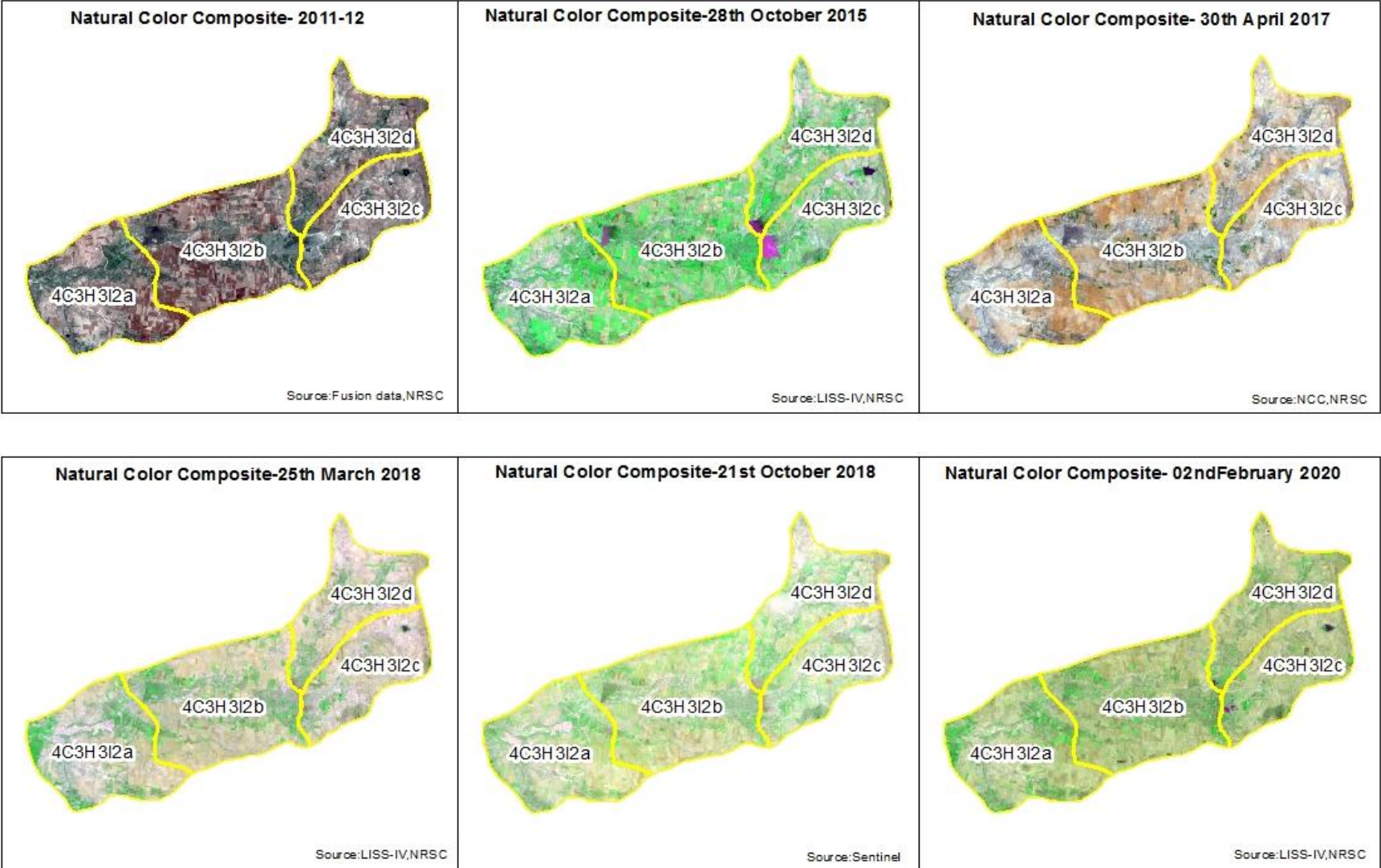
Sr. No	Activity	Drishti Photo	Visible on satellite
1	Afforestation	4	4
2	Horticulture	0	0
3	Agriculture	53	53
4	Pasture	0	0
5	Trench	0	0
6	Field Bunds	0	0
7	Terrace	0	0
8	Checks & Plugs	29	29
9	Gabion structure	0	0
10	Farm ponds/Dug out pit	33	33
11	Civil work-Check dams/Rock fill dam	52	30
12	Nallah Bunds/Drainage treatment	0	0
13	Percolation tanks / Ground water recharge structure	0	0
14	Production System and Micro-Enterprises	0	0
15	Livelihood Activities-Plantation/Horticulture	32	32
16	Capacity Building Activities	0	0
17	Entry Point Activity	0	0
18	Others	120	95
	TOTAL	323	276

MONITORING IN THE PROJECT AREA

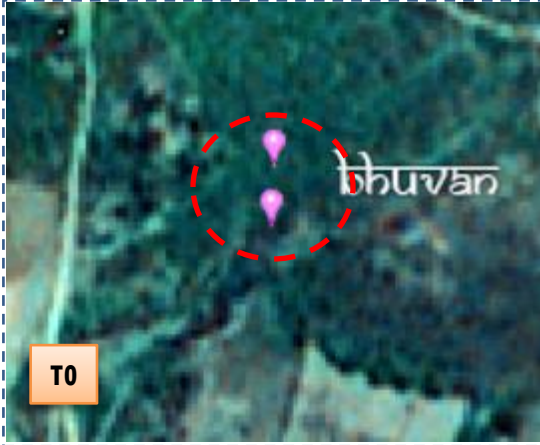
Site Wise Changes in the Project

- Impacts of the activities carried out are presented through combination of Drishti and Srishti captures.
- T0 is the baseline period before implementation (2011-12) and T5 is 2019-20 period for monitoring.
- Captures are also provided wherever changes are observed in satellite images, that may match expected activity related impact, even though they don't have Drishti report yet.

Natural Colour Composite (NCC)



Monitoring of activities in Anantapuram Dt Andhra Pradesh. IWMP-52/2011-12



T0:2011-12



T1: 07 February 2017

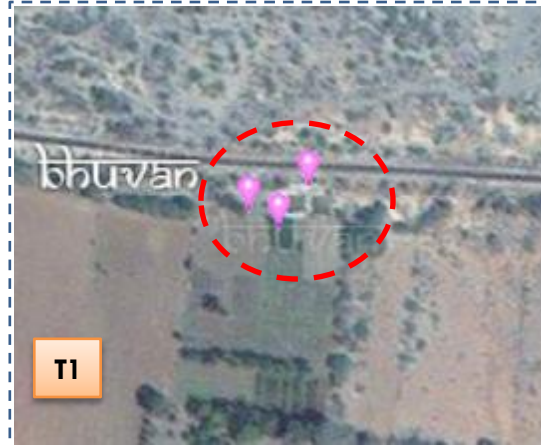


Drishti SI no. 136860 MWS : 4C3H3I2d

Check dam



T0:2011-12



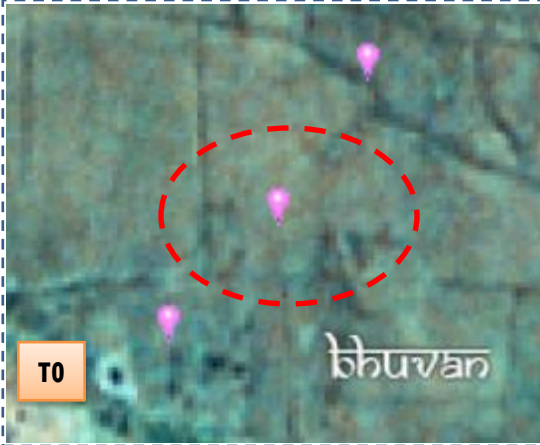
T1: 07 February 2017



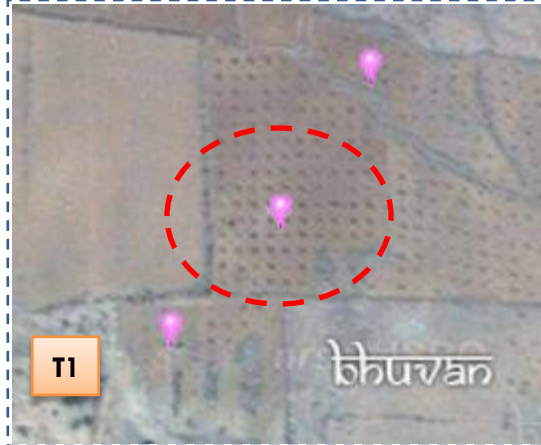
Drishti SI no. 7038292 MWS : 4C3H3I2b

Farm pond

Monitoring of activities in Anantapuram Dt Andhra Pradesh. IWMP-52/2011-12



T0:2011-12

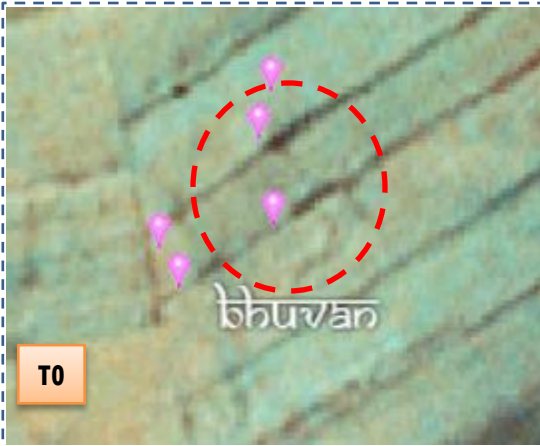


T1: 07 February 2017

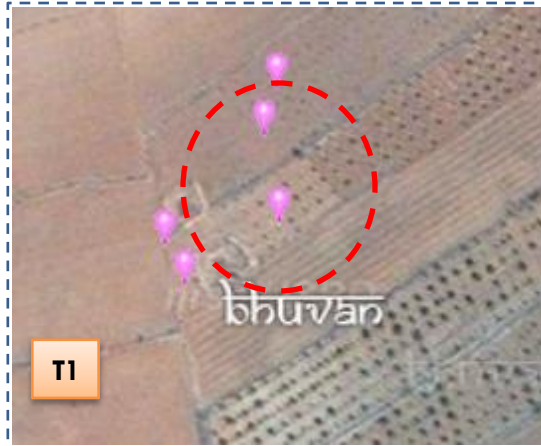


Drishti SI no. 130150 MWS : 4C3H3I2c

Horticulture



T0:2011-12



T1: 07 February 2017



Drishti SI no. 138964 MWS : 4C3H3I2a

Horticulture

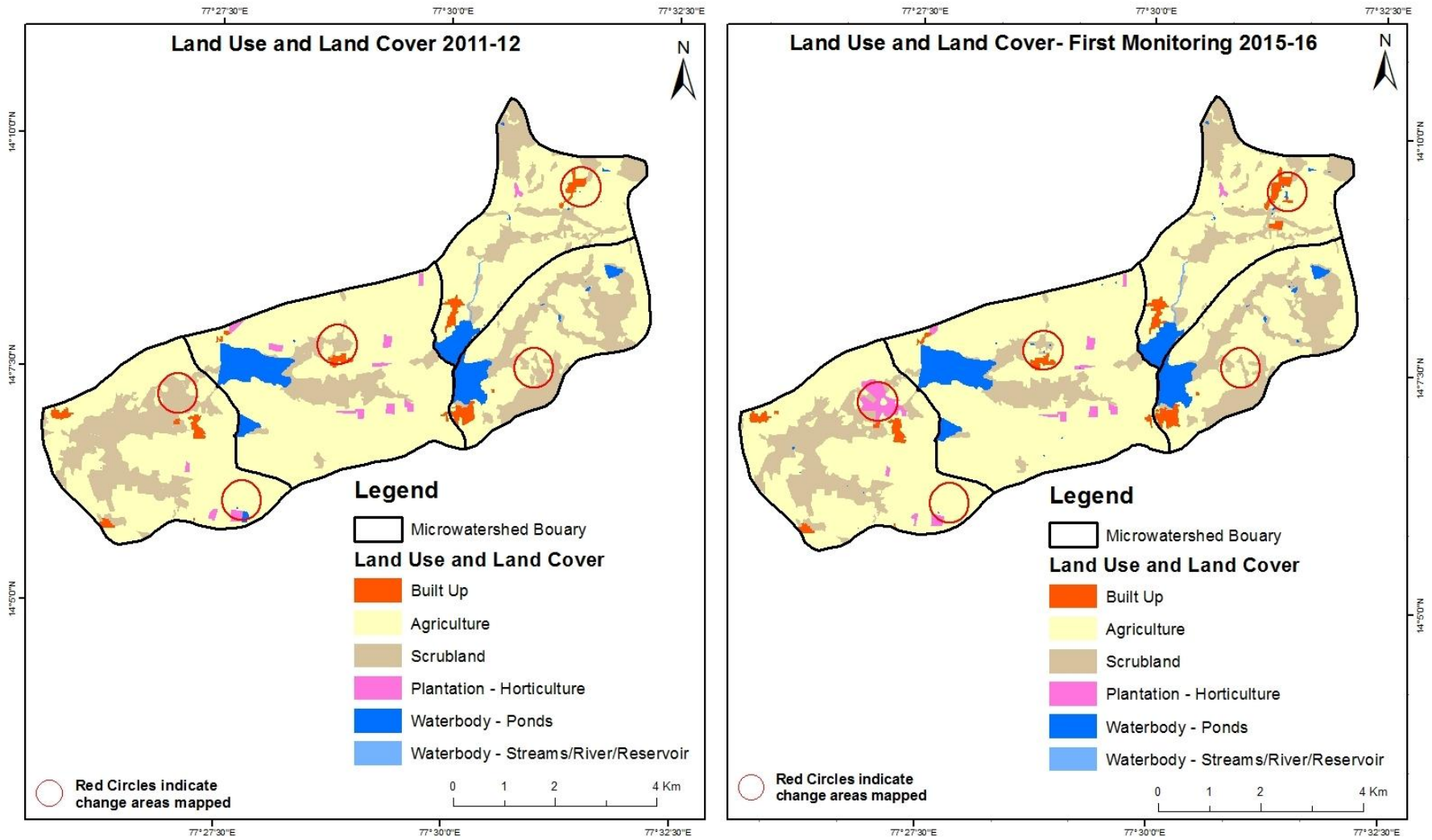
MONITORING IN THE PROJECT AREA

Land use and Land cover Changes in the Project

- Change in land use and land cover from T0 to T5 are analyzed in terms of built up, mining/dump, agriculture, plantation- horticulture, forest, barren rocky waterbody-streams/river/reservoir and waterbody -ponds.
- Captures are also provided wherever changes are observed in satellite images, that may match expected activity related impact, even though they don't have Drishti report yet.
- The result obtained for the period T0 to T5 are given in the change matrix table.
- In matrix table column represents the T0 (2011-12) and row represents the T5 (2019-20)

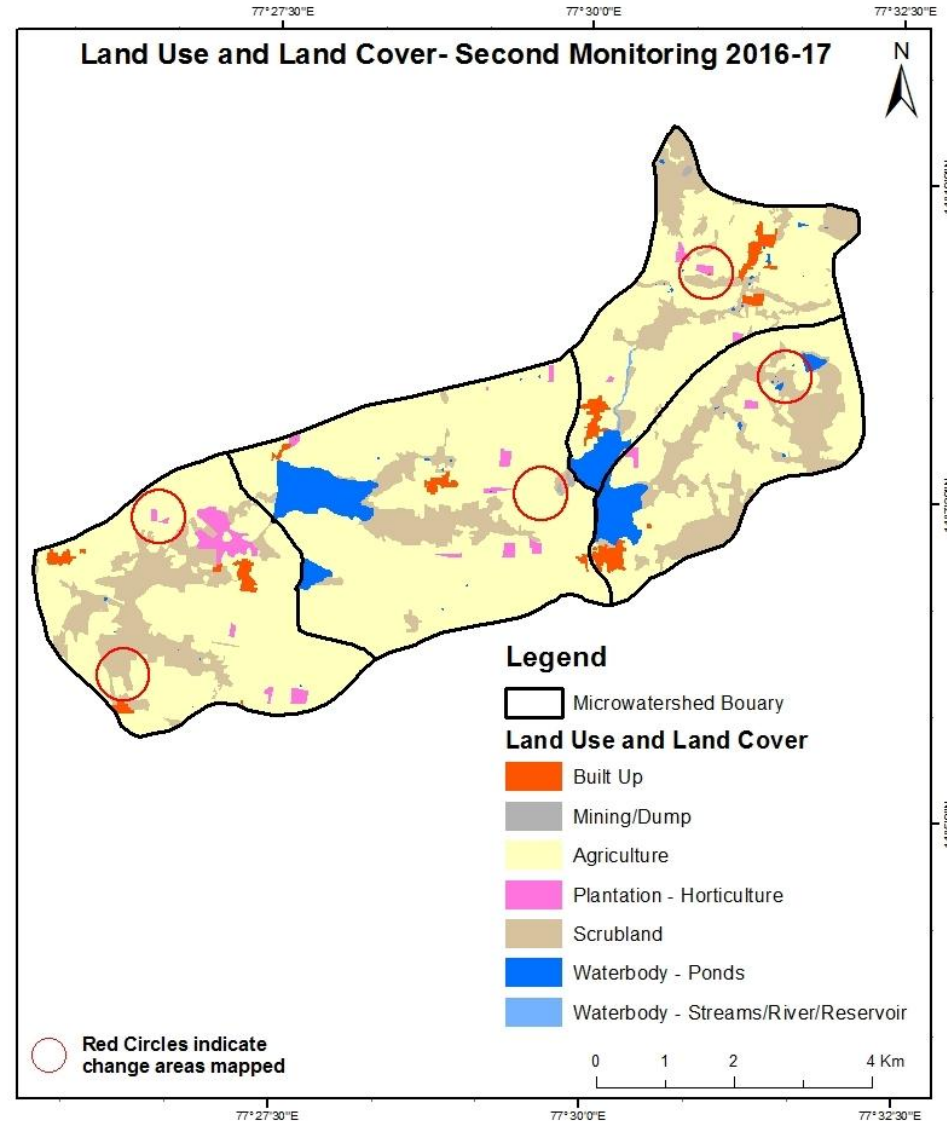
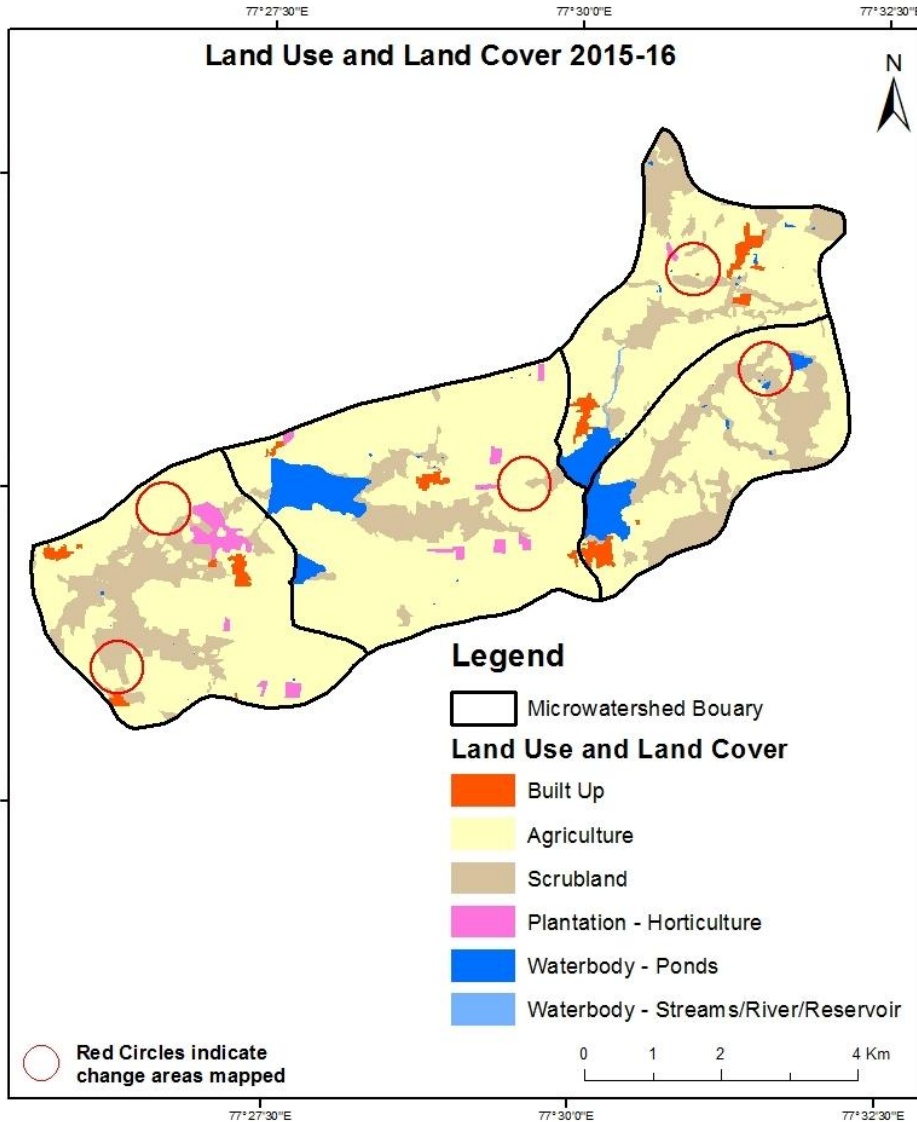
Comparative assessment of Land Use and Land Cover for Pre and Post IWMP implementation (2011-12 to 2015-16)

Scale: 1:10000



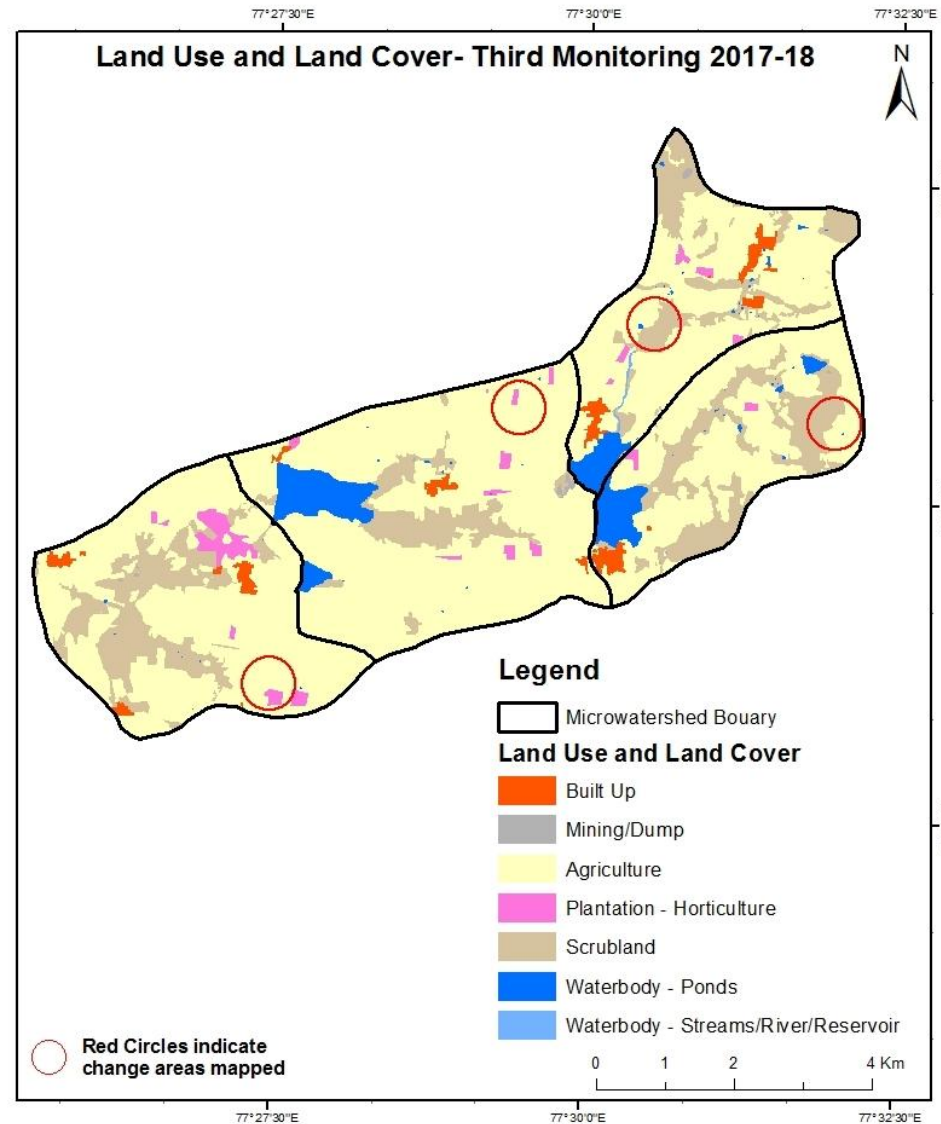
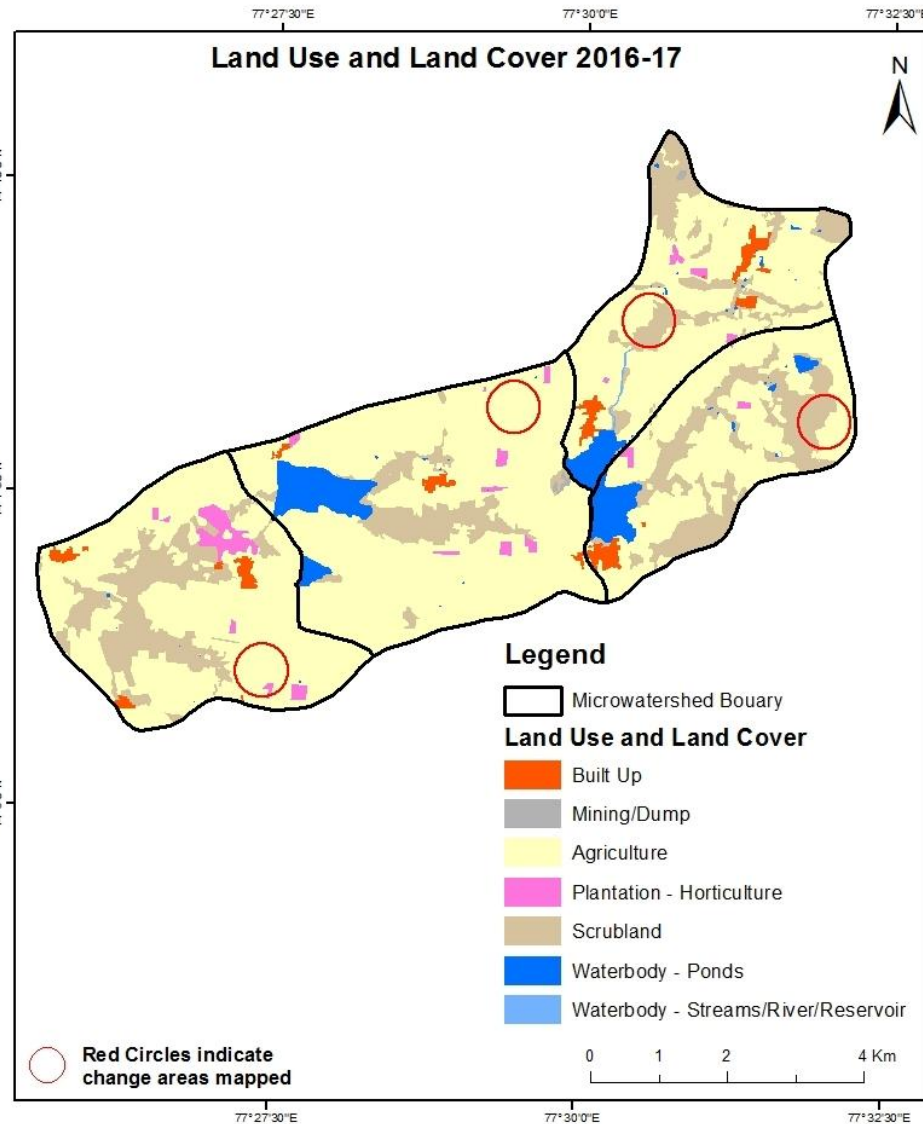
Comparative assessment of Land Use and Land Cover for Pre and Post IWMP implementation (2015-16 to 2016-17)

Scale: 1:10000



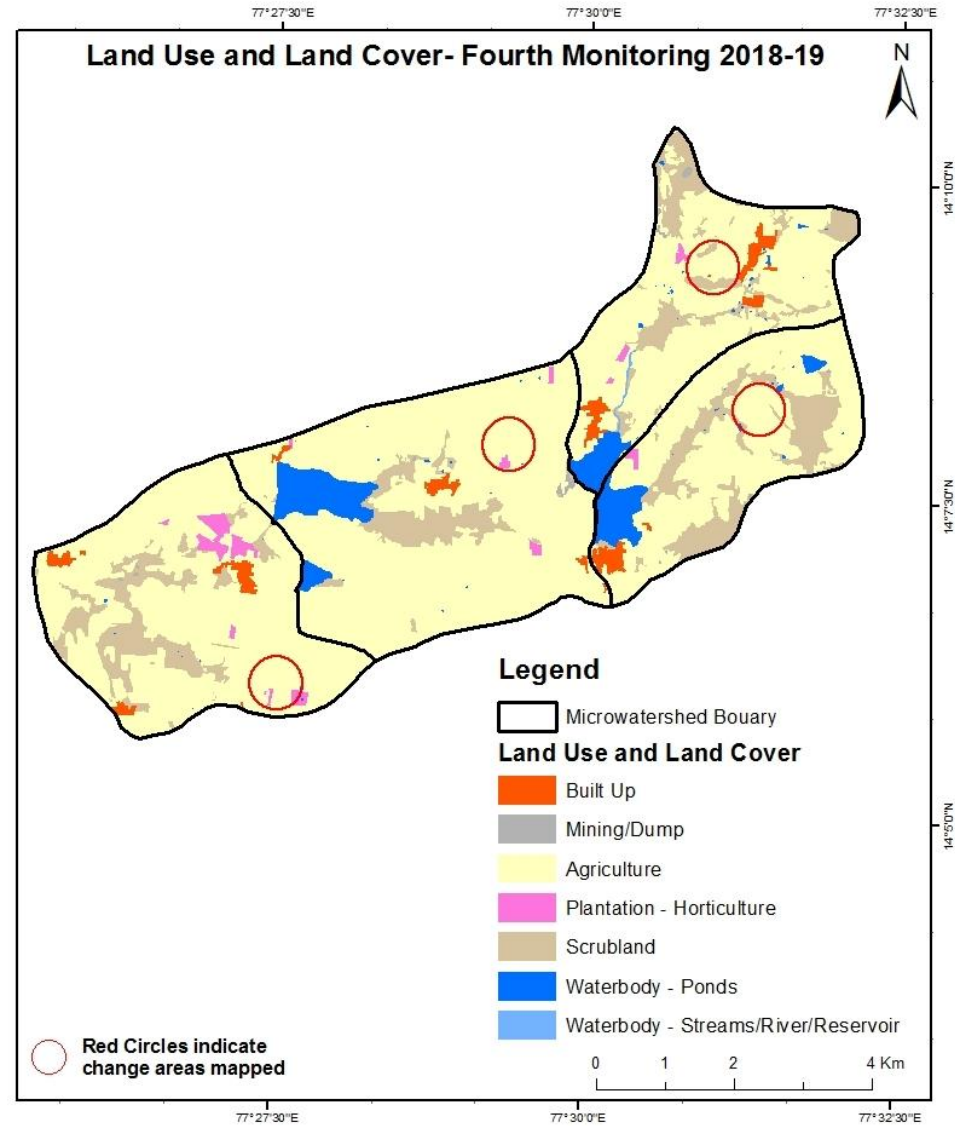
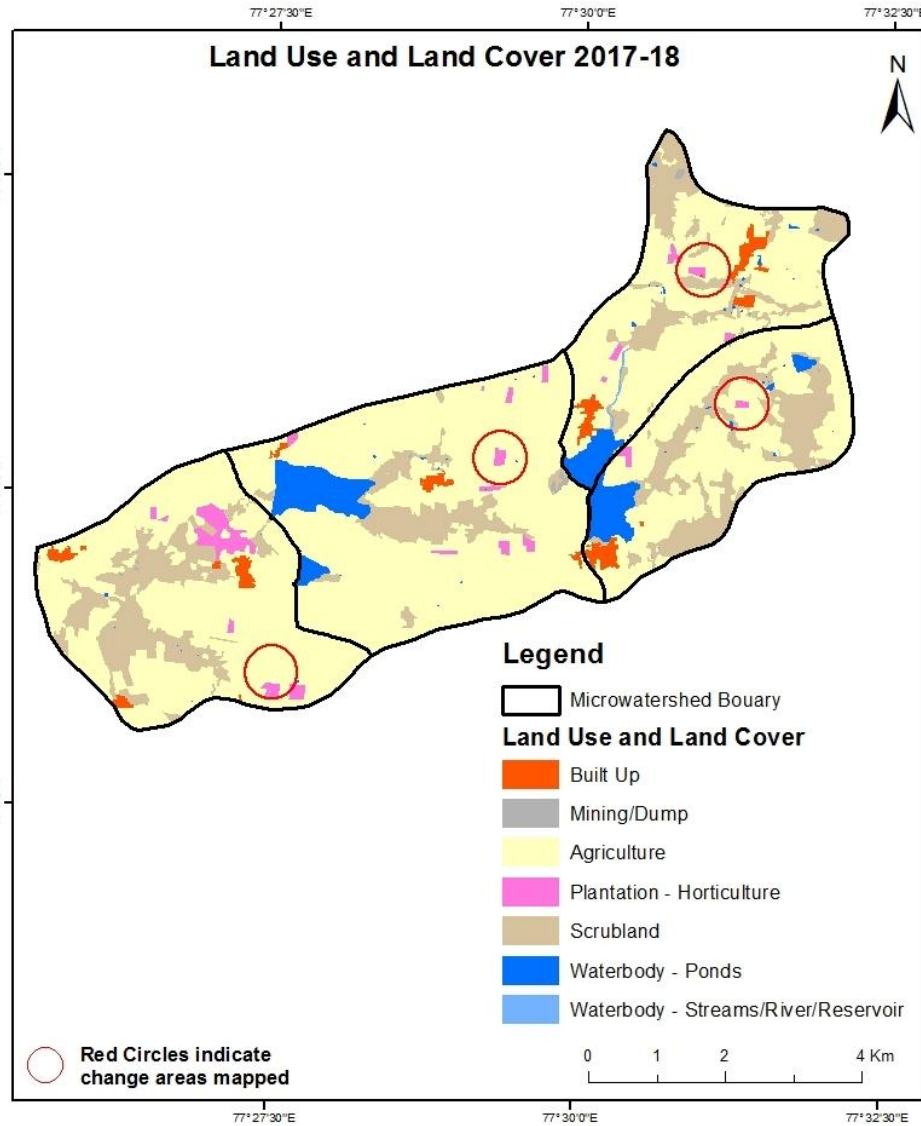
Comparative assessment of Land Use and Land Cover for Pre and Post IWMP implementation (2016-17 to 2017-18)

Scale: 1:10000



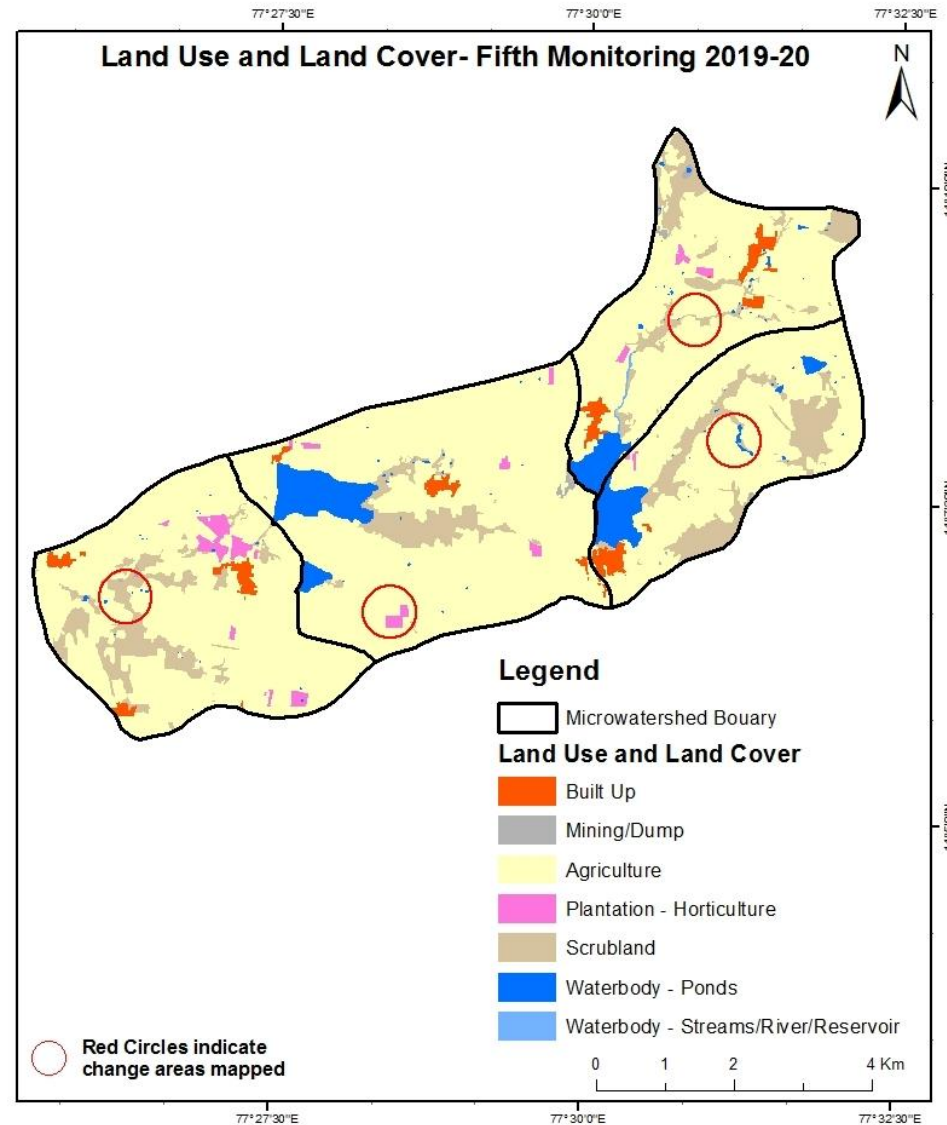
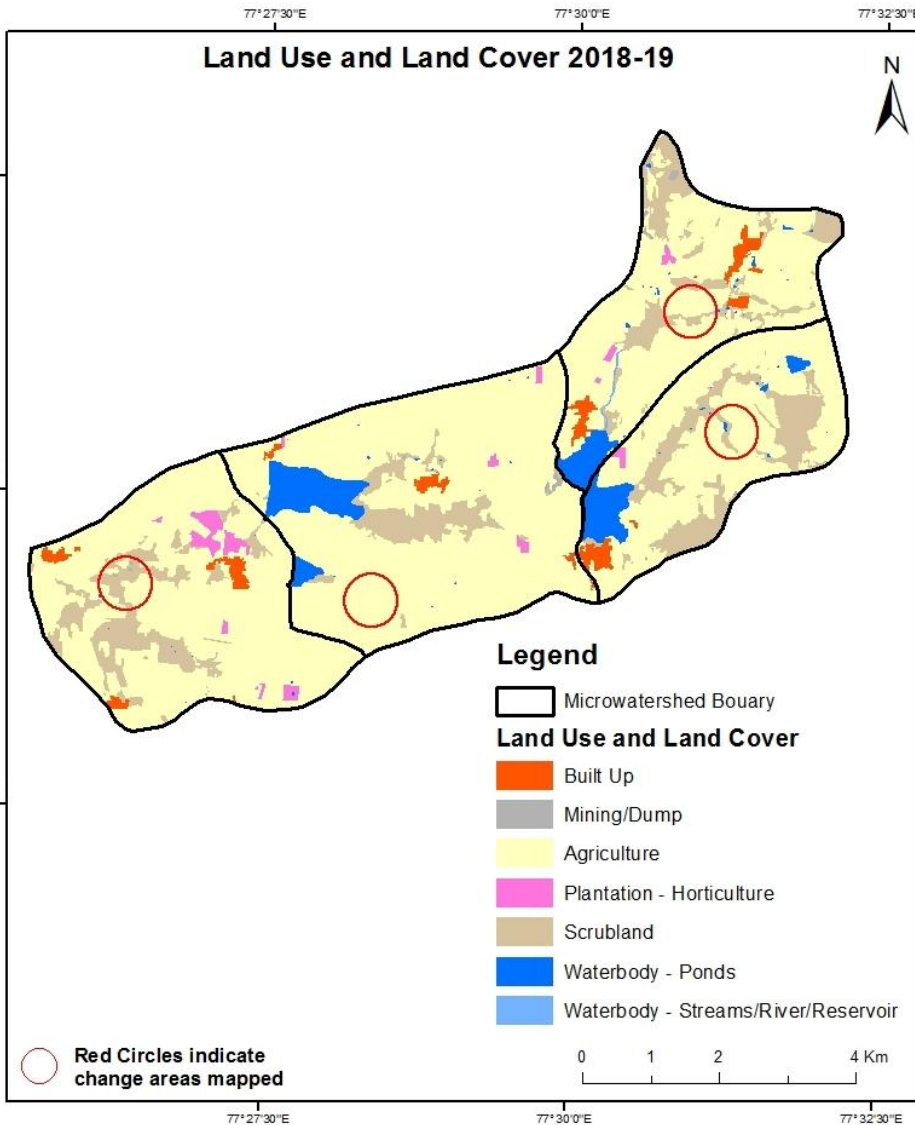
Comparative assessment of Land Use and Land Cover for Pre and Post IWMP implementation (2017-18 to 2018-19)

Scale: 1:10000



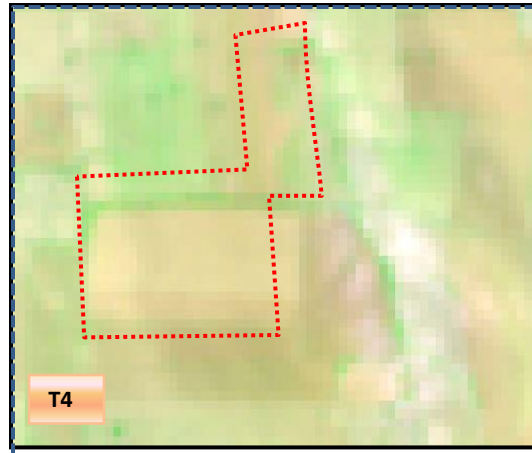
Comparative assessment of Land Use and Land Cover for Pre and Post IWMP implementation (2018-19 to 2019-20)

Scale: 1:10000

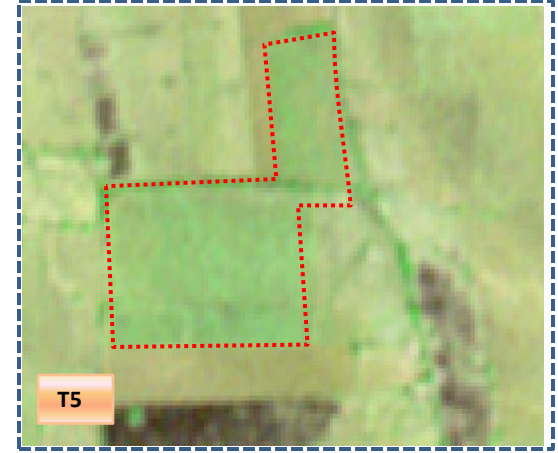


Land Use and Land Cover changes for Pre and Post treatment dates

Agriculture to Plantation

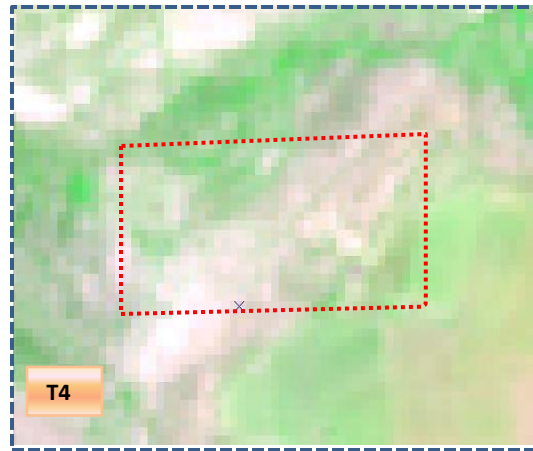


T4: 2018-19 (77°28'30.659"E 14°6'34.819"N)

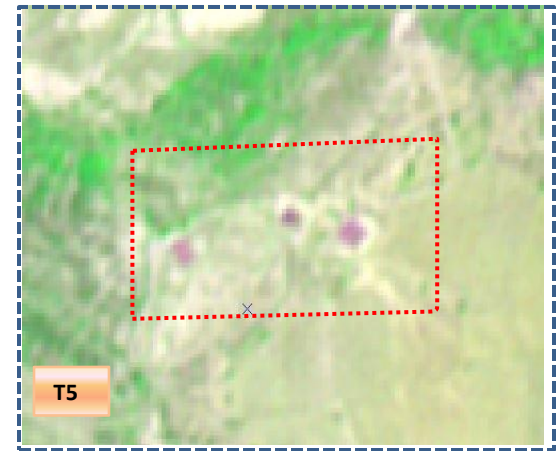


T5: 02 February 2020

Scrub to Waterbody



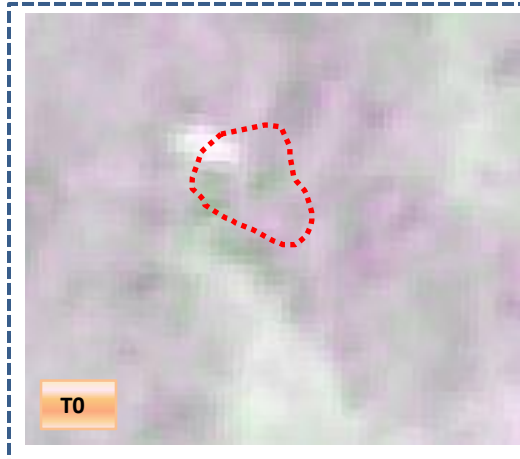
T4: 2018-19 (77°26'28.401"E 14°6'44.897"N)



T5: 02 February 2020

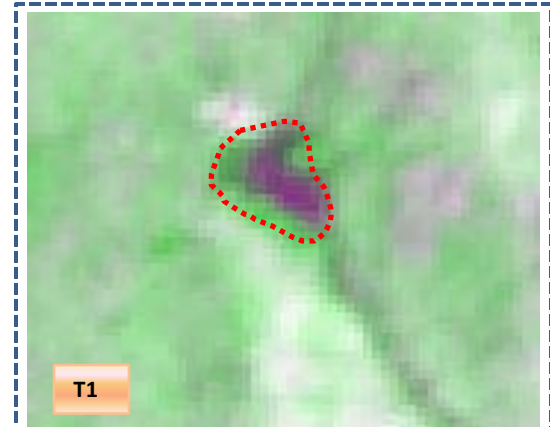
Land Use and Land Cover changes for Pre and Post treatment dates

Scrub to Waterbody



T0

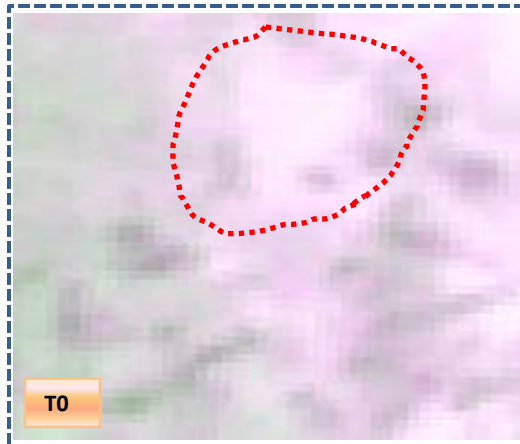
T0: 2011-12 (77°30'33.969"E 14°10'9.786"N)



T1

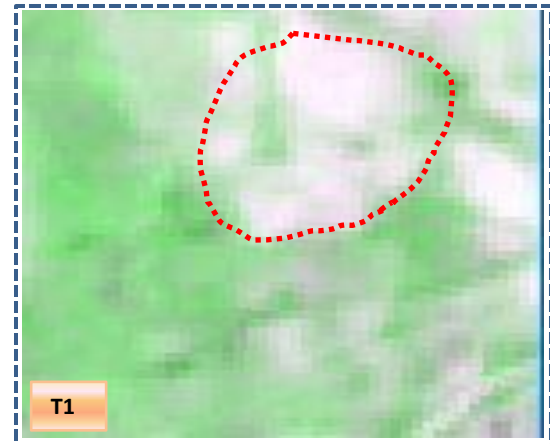
T1: 28 October 2015

Scrub to Agriculture



T0

T0: 2011-12 (77°50'36.572"E 14°23'35.957"N)

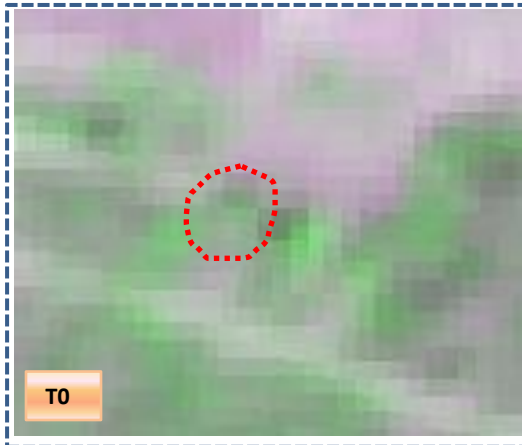


T1

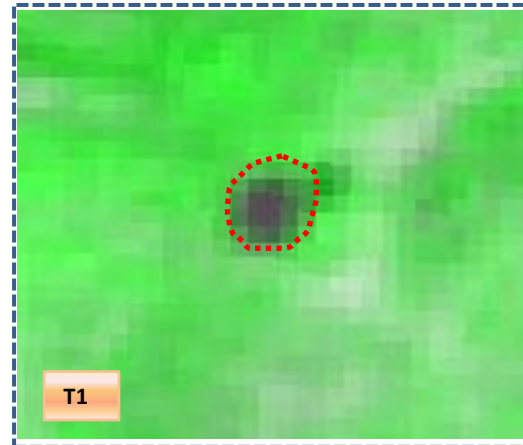
T1: 28 October 2015

Land Use and Land Cover changes for Pre and Post treatment dates

Agriculture to Waterbody

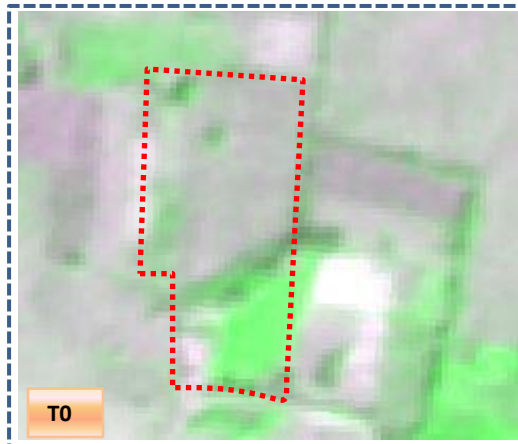


T0: 2011-12 (77°31'18.089E 14°9'15.741N)



T1: 28 October 2015

Agriculture to Built Up



T0: 2011-12 (77°25'57.666"E 14°7'5.652"N)



T1: 28 October 2015

Table showing change matrix depicting Land cover transitions during study period-2011-12 to 2015-16

Land cover	Monitoring period (T1)										Units in Hectares	
	Built up	Mining/ dump	Agriculture	Plantation Horticulture	Forest	Forest Plantation	Barren Rocky	Scrub	Waterbody- Streams/River	Water body Ponds	Grand Total	
Built up	67.20										67.20	
Mining/dump												
Agriculture	12.26		3169.77							1.19	3183.22	
Plantation Horticulture	0.15		5.63	32.34						0.05	38.17	
Forest												
Forest Plantation												
Barren Rocky												
Scrub	1.43		68.54	33.54				907.83		1.78	1013.12	
Waterbody- Streams/River									3.67		3.67	
Waterbody – Ponds			2.59							199.98	202.57	
Grand Total	81.03		3246.52	65.89				907.83	3.67	202.99	4507.95	

- In matrix table diagonal elements represent the both periods in the same class and off diagonal elements represents change in between the classes.
- In T0 13 ha of the agriculture area has decreased and it is converted into Built-up and water body in T1.
- In T1 74 ha of the agriculture area has increased from plantations, scrubland and water body of T0.
- The additional agriculture are coming from waterbody in T1 represents seasonal agriculture.

Table showing change matrix depicting Land cover transitions during study period-2015-16 to 2016-17

Land cover	Monitoring period (T2)										Units in Hectares	
	Built up	Mining/ dump	Agriculture	Plantation Horticulture	Forest	Forest Plantation	Barren Rocky	Scrub	Waterbody- Streams/River	Water body Ponds	Grand Total	
Built up	81.03										81.03	
Mining/dump												
Agriculture	1.73		3228.15	14.63				1.82		0.20	3246.52	
Plantation Horticulture			2.65	63.24							65.89	
Forest												
Forest Plantation												
Barren Rocky												
Scrub	0.75	5.06	40.47					861.10		0.45	907.83	
Waterbody- Streams/River									3.67		3.67	
Waterbody – Ponds										202.99	202.99	
Grand Total	83.52	5.06	3271.27	77.87				862.92	3.67	203.64	4507.95	

- In matrix table diagonal elements represent the both periods in the same class and off diagonal elements represents change in between the classes.
- In T1 16 ha of the agriculture area has decreased and it is converted into Built-up, plantation, scrubland and water body in T2.
- In T2 43 ha of the agriculture area has increased from plantations and scrubland of T1. The additional agriculture are coming from waterbody in T2 represents seasonal agriculture.

Table showing change matrix depicting Land cover transitions during study period-2016-17 to 2017-18

Land cover	Monitoring period (T3)										Units in Hectares	
	Built up	Mining/ dump	Agriculture	Plantation Horticulture	Forest	Forest Plantation	Barren Rocky	Scrub	Waterbody- Streams/River	Water body Ponds	Grand Total	
Built up	83.52										83.52	
Mining/dump		5.06									5.06	
Agriculture			3260.34	7.41				2.70		0.82	3271.27	
Plantation Horticulture			0.42	77.44							77.87	
Forest												
Forest Plantation												
Barren Rocky												
Scrub		2.00	19.67					840.94		0.32	862.92	
Waterbody- Streams/River									3.67		3.67	
Waterbody – Ponds										203.64	203.64	
Grand Total	83.52	7.06	3280.43	84.86				843.64	3.67	204.78	4507.95	

- In matrix table diagonal elements represent the both periods in the same class and off diagonal elements represents change in between the classes.
- In T2 10 ha of the agriculture area has decreased and it is converted into plantations, scrubland and water body in T3.
- In T3 20 ha of the agriculture area has increased from plantations and scrubland of T2.
- The additional agriculture are coming from waterbody in T3 represents seasonal agriculture.

Table showing change matrix depicting Land cover transitions during study period-2017-18 to 2018-19

Land cover	Monitoring period (T4)										Units in Hectares	
	Built up	Mining/ dump	Agriculture	Plantation Horticulture	Forest	Forest Plantation	Barren Rocky	Scrub	Waterbody- Streams/River	Water body Ponds	Grand Total	
T3												
Built up	83.52										83.52	
Mining/dump		7.06									7.06	
Agriculture	5.02	1.09	3274.32								3280.43	
Plantation Horticulture			31.52	53.20						0.13	84.86	
Forest												
Forest Plantation												
Barren Rocky												
Scrub	0.62	0.88	205.00					637.08		0.07	843.64	
Waterbody- Streams/River									3.67		3.67	
Waterbody – Ponds										204.78	204.78	
Grand Total	89.16	9.03	3510.83	53.20				637.08	3.67	204.97	4507.95	

- In matrix table diagonal elements represent the both periods in the same class and off diagonal elements represents change in between the classes.
- In T3 06 ha of the agriculture area has decreased and it is converted into Built-up and mining/dump in T4.
- In T4 236 ha of the agriculture area has increased from plantations and scrubland of T3.
- The additional agriculture are coming from waterbody in T4 represents seasonal agriculture.

Table showing change matrix depicting Land cover transitions during study period-2018-19 to 2019-20

Land cover	Monitoring period (T5)										Units in Hectares	
T4	Built up	Mining/ dump	Agriculture	Plantation Horticulture	Forest	Forest Plantation	Barren Rocky	Scrub	Waterbody- Streams/River	Water body Ponds	Grand Total	
Built up	89.16											89.16
Mining/dump		8.64								0.39		9.03
Agriculture	3.88	1.09	3493.63	11.02						1.21		3510.83
Plantation Horticulture			2.69	50.38						0.14		53.20
Forest												
Forest Plantation												
Barren Rocky												
Scrub	0.24	0.76	109.14					523.36		3.57		637.08
Waterbody- Streams/River									3.67			3.67
Waterbody – Ponds										204.97		204.97
Grand Total	93.29	10.49	3605.46	61.39				523.36	3.67	210.28		4507.95

- In matrix table diagonal elements represent the both periods in the same class and off diagonal elements represents change in between the classes.
- In T4 17 ha of the agriculture area has decreased and it is converted into Built-up, mining/dump, plantations and water body in T5.
- In T5 111 ha of the agriculture area has increased from plantations and scrubland of T4.
- The additional agriculture are coming from waterbody in T5 represents seasonal agriculture.

Conclusion

1. DPR of the project is uploaded on to Bhuvan Portal.
2. The LULC shows that there is an increase in Crop land, Built up area, Reservoir / Tanks & decrease in Scrubland as presented in the change matrix for different years.
3. There is an increase of 7.7 Hectares in Reservoir / Tanks area as compared between baseline LU/LC data 2011-12 (T0) & 2019-20 (T5) years.
4. There is an increase of 63, 24, 09, 230 & 94 Hectares From T1 to T2, T2-T3, T3 to T4 & T4-T5 respectively and overall increase of 422 Hectares in Crop land area as compared between baseline LU/LC data 2011-12 (T0) & 2019-20 (T5) years.
5. There is an increase of 23 ha of the Plantation/Horticulture area has been increased between 2011-12 (T0) & 2019-20 (T5) years.
6. There is a decrease of 489 Hectares in Scrubland area as compared between 2011-12 (T0) & 2019-20 (T5) years.
7. Farm ponds (33) is visible on IWMP Bhuvan Srishti portal out of Bhuvan Drishti photo of Farm ponds (33) verified from the portal.