

MONITORING OF IWMP WATERSHED PROJECTS USING GEO-INFORMATION

SUMMARY REPORT

ANANTAPURAMU -37/2010-11

Andhra Pradesh

Submitted to NRSC, Balanagar, Hyderabad
March-2021

T 0 - T 1 - T 2 - T 3 - T 4 - T 5



AGRICULTURE & SOIL
DIVISION
Andhra Pradesh Space
Applications Centre (APSAC)
ITE&C Department Govt. of
Andhra Pradesh



RURAL DEVELOPMENT AND
WATERSHED MONITORING
DIVISION
Land Resources and Land Use
Mapping and Monitoring Group,
Remote Sensing Application Area,
National Remote Sensing Centre, ISRO



DEPARTMENT OF LAND
RESOURCES
Ministry of Rural Development
Government of India

C O N T E N T S

- **EXECUTIVE SUMMARY**

01. STUDY AREA

02. SATELLITE & ANCILLARY DATA INCLUDING DRISHTI STATUS

03. MONITORING IN THE PROJECT AREA : Site wise changes in the project

04. CONCLUSIONS

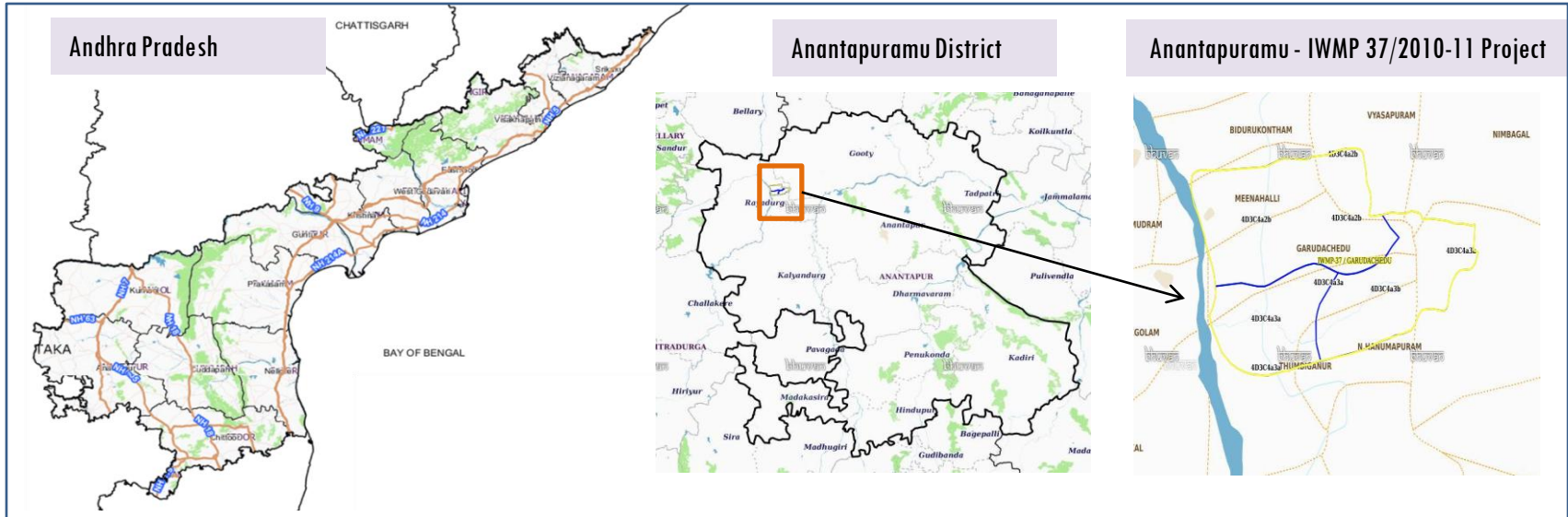
E X E C U T I V E S U M M A R Y

- Integrated Watersheds Management Project (IWMP) is a flagship programme of Department of Land Resources (DoLR), Ministry of Rural Development (MRD).
- National Remote Sensing Centre (NRSC), ISRO has designed and developed Bhuvan Geo-ICT Web portal tools namely - Srishti and Drishti for monitoring and evaluation of IWMP watersheds. It uses high spatial and temporal resolution sensors viz., Carto-1/2(2.5 m) , LISS-IV(5.8 m color).
- Current summary report gives details of Project - IWMP-37/2010-11, Anantapuramu District of Andhra Pradesh. The total geographical area of the project is 3,681 ha. It comprises of 3 micro watersheds.
- In the project area 160 Drishti photos were uploaded showing check dams/Rock fill dam, livelihood activities, and remaining showing other activities.
- Water bodies have shown an increase by 31 ha , which correspond to the other land use classes that have been converted into various water bodies in this period.
- Major percentage i.e. 94.71 % is covered by the agriculture, 1.30 % is covered by Scrub land and remaining by other land use classes.

PROJECT : ANANTAPURAMU – IWMP-37/2010-11

DISTRICT : ANANTAPURAMU , STATE : ANDHRA PRADESH

- The study area falls in Kanekal Mandal of Anantapuramu district of Andhra Pradesh state. The total geographical area of the project is 3,681 ha. It comprises of 3 micro watersheds. Location Map of the study area is shown in Figure below. Analysis is done for 2010-11 (T0) period (**Batch -II**) projects taking 2018-19 (T5) period satellite images



- Anantapuram has a semi-arid climate, with hot and dry conditions for most of the year. Summers start in late February and peak in May with average high temperatures around the 37 °C range and it reaches around 44 °C to 45 °C.
- Anantapuram gets pre-monsoon showers starting as early as March, mainly through north-easterly winds blowing in from Kerala. Monsoon arrives in September and lasts until early November with about 250 mm (9.8 in) of precipitation. A dry and mild winter starts in late November and lasts until early February; with little humidity and average temperatures in the 22-23 °C (72-73 °F) range. Total annual rainfall is about 22 in (560 mm).
- Anantapuram district receives moderate to good rainfall from July to October month.

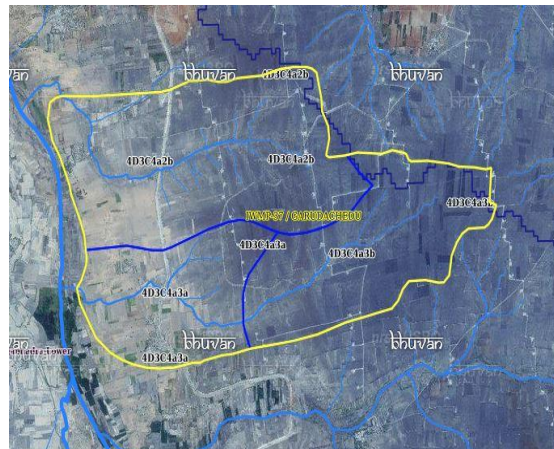
Satellite Data and Ancillary Data

Satellite data*	T0-A**	T0-B**	T5
	2010-11	2011-12	2018-19
LISS IV	2010-11		
SCENE 1			8-Mar-19
SCENE2			
SCENE 3			
SCENE 4			
CARTO	2010-11		
SCENE 1			8-Mar-19
SCENE2			
SCENE 3			
SCENE 4			

Ancillary Data

	Category	Sub category	Status
1	Thematic maps		
	LULC (1: 10 000)		
		DRAIANGE	YES
		SETTLEMENT	YES
		ROADS/RAILS	No
	LULC (1: 50 000)		
		2005-06	
		2008-09	
2	Activity Plan Maps		
3	Drishhti Photographs		
		Total	160
4	Detailed Project Report		

Natural Color Composite overlaid with Project boundaries and high detail stream network



Legend



Drainage (1:10000 Scale)

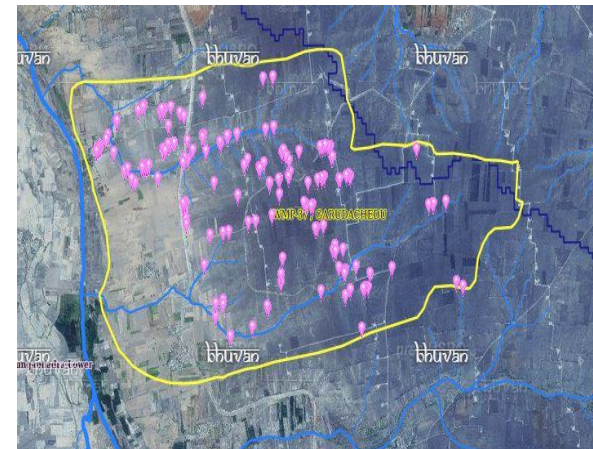


MWS Boundary



Project Boundary

Natural Color Composite overlaid with Drishhti Points



Drishhti Upload Status

Classification of the Activities

Sr. No	Activity	Drishti Photo	Visible on satellite
1	Afforestation	8	8
2	Agriculture/Horticulture	0	0
3	Pasture	0	0
4	Trench	0	0
5	Field Bunds	0	0
6	Terrace	0	0
7	Checks & Plugs	2	2
8	Gabion structure	0	0
9	Farm ponds/Dug out pit	21	20
10	Civil work-Check dams/Rock fill dam	148	130
11	Nallah Bunds/Drainage treatment	0	0
12	Percolation tanks / Ground water recharge structure	0	0
13	Production System and Micro-Enterprises	0	0
14	Livelihood Activities-Plantation/Horticulture	0	0
15	Capacity Building Activities	0	0
16	Entry Point Activity	0	0
17	Others	0	0
	TOTAL	179	160

MONITORING IN THE PROJECT AREA

Site Wise Changes in the Project

- Impacts of the activities carried out are presented through combination of Drishti and Srishti captures.
- T0 is the baseline period before implementation (2010-11) and T5 is 2018-19 period for monitoring.
- Captures are also provided wherever changes are observed in satellite images, that may match expected activity related impact, even though they don't have Drishti report yet.

Anantapuramu-IWMP-37/2010-11

2010-11



Feb-2014



Feb-2017



April-2018



2019



Drishti Sl.No.: 1024015
M.No.: 9100986121
Uuid: 25e6718dfa147d1d

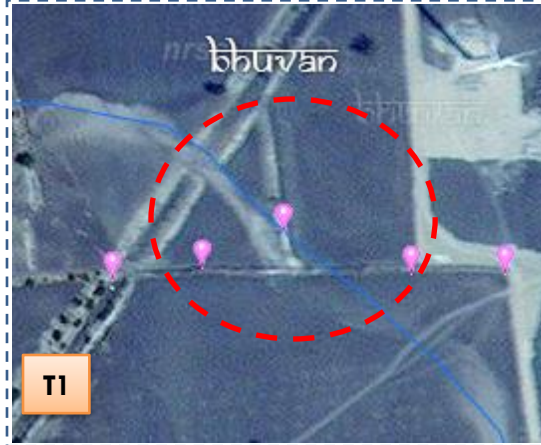
Activity : check dam

Monitoring of activities in Anantapuram Dt Andhra Pradesh. IWMP-37/2010-11



T0

T0:2010-11



T1

T1: 30 November 2014



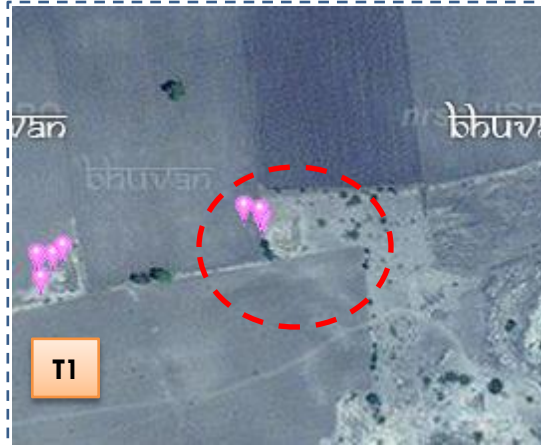
Drishti SI no. 1638693 MWS : 4D3C4a2b

Check dam



T0

T0:2010-11



T1

T1: 30 November 2014



Drishti SI no. 1026301 MWS : 4D3C4a2b

Farm pond

Monitoring of activities in Anantapuram Dt Andhra Pradesh. IWMP-37/2010-11



T0:2010-11



T1: 30 November 2014



Drishti SI no. 1639026 MWS : 4D3C4a2b

Farm pond



T0:2010-11



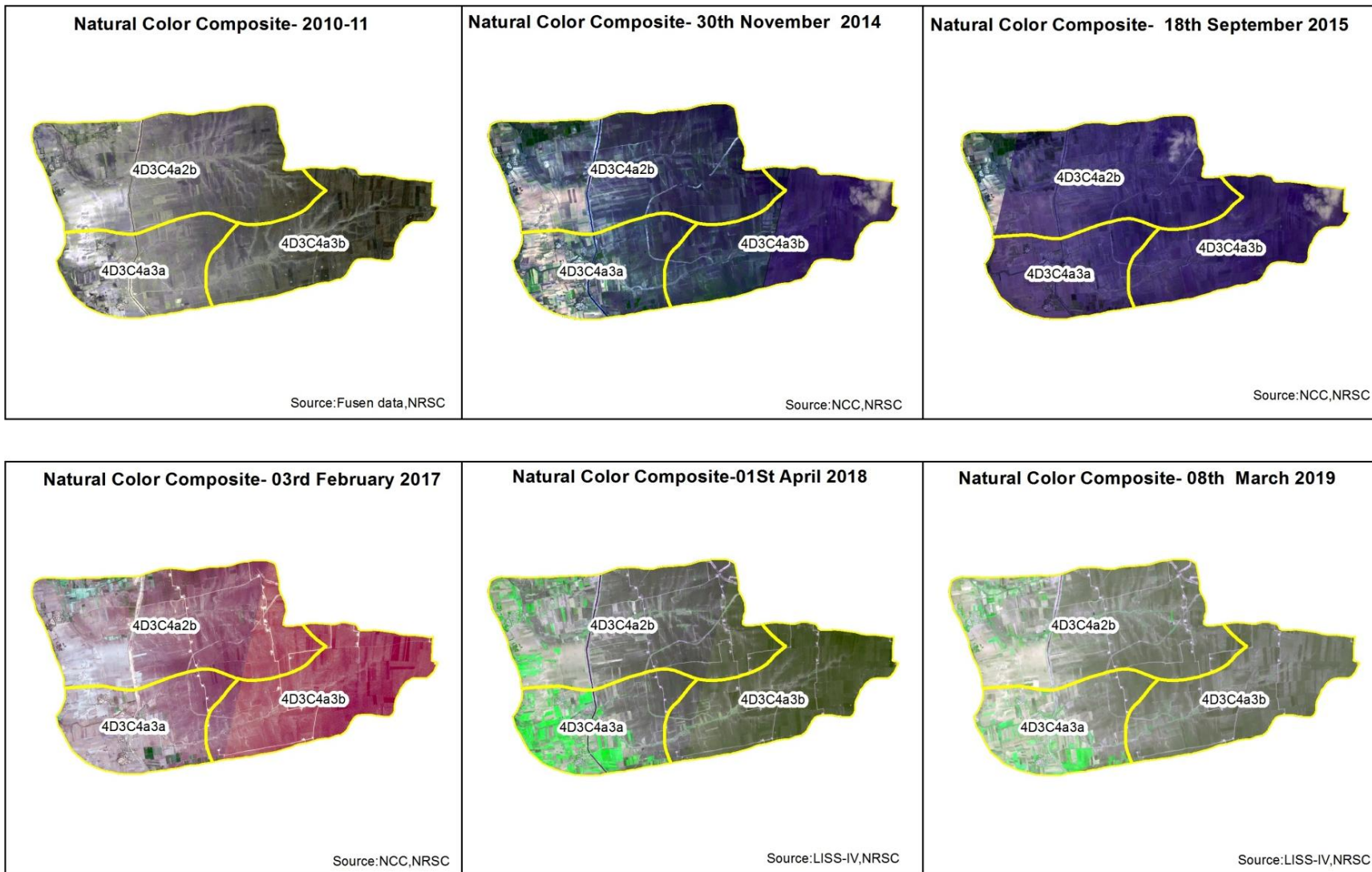
T1: 30 November 2014



Drishti SI no. 1641838 MWS : 4D3C4a2b

Farm pond

Natural Color Composite – 2010-11 to 2018-19



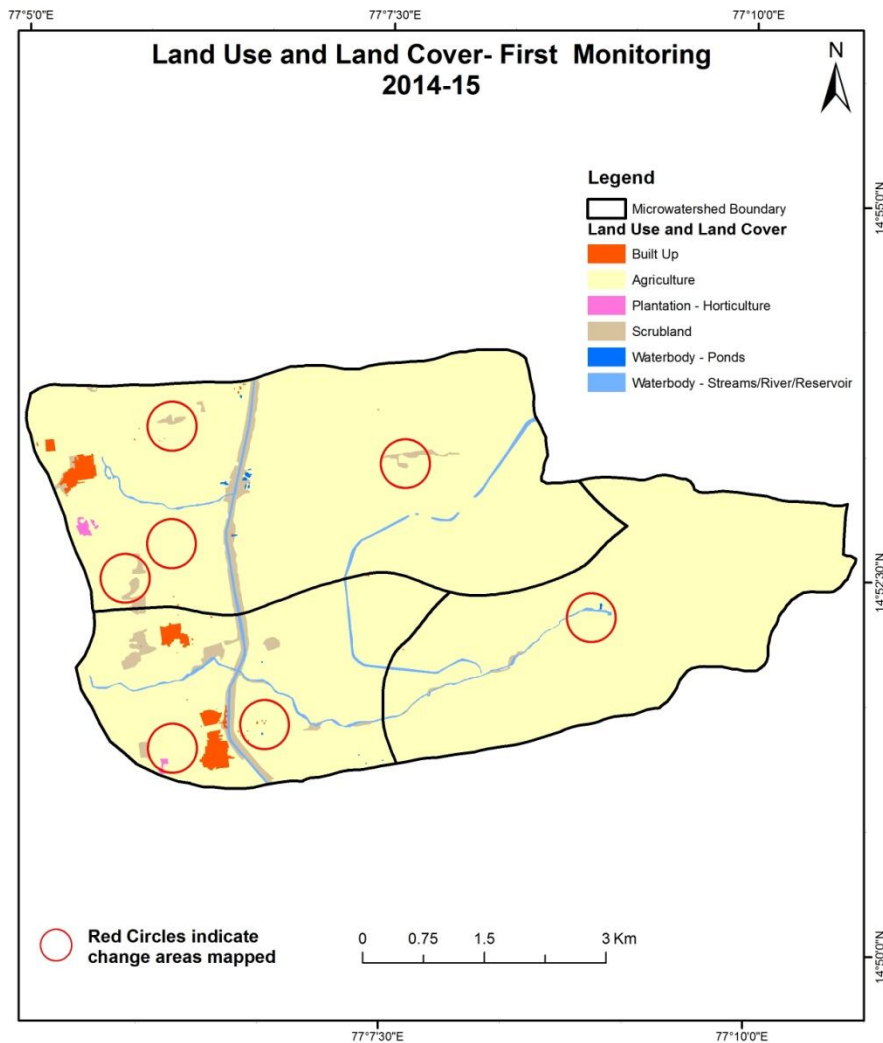
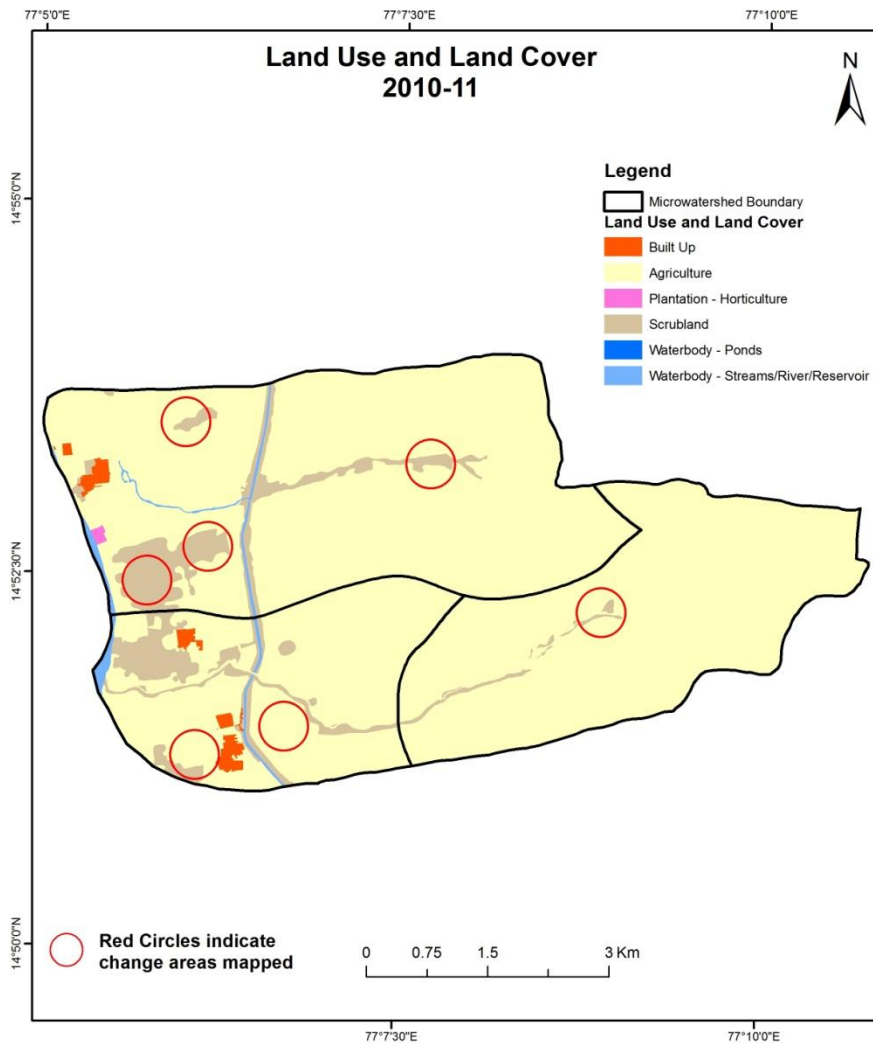
MONITORING IN THE PROJECT AREA

Land use and Land cover Changes in the Project

- Change in land use and land cover from T0 to T5 are analyzed in terms of built up, mining/dump, agriculture, plantation- horticulture, forest, barren rocky waterbody-streams/river/reservoir and waterbody -ponds.
- Captures are also provided wherever changes are observed in satellite images, that may match expected activity related impact, even though they don't have Drishti report yet.
- The result obtained for the period T0 to T5 are given in the change matrix table.
- In matrix table column represents the T0 (2010-11) and row represents the T5 (2018-19)

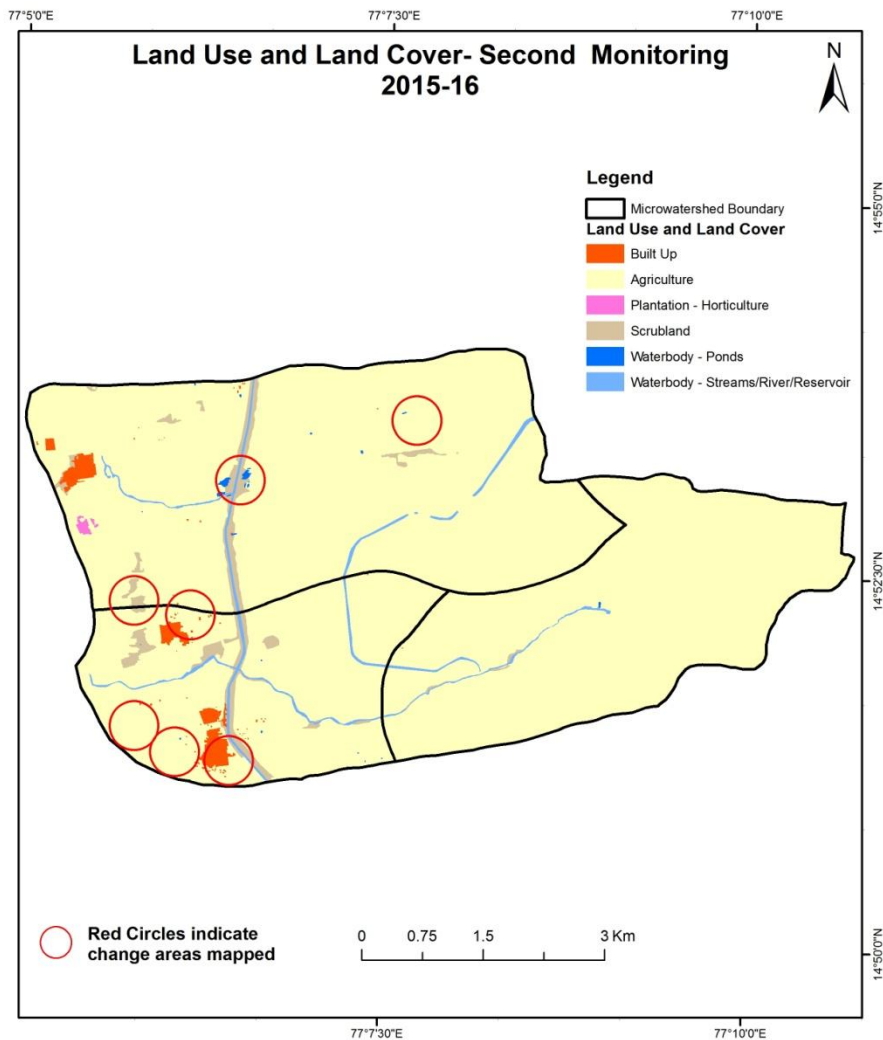
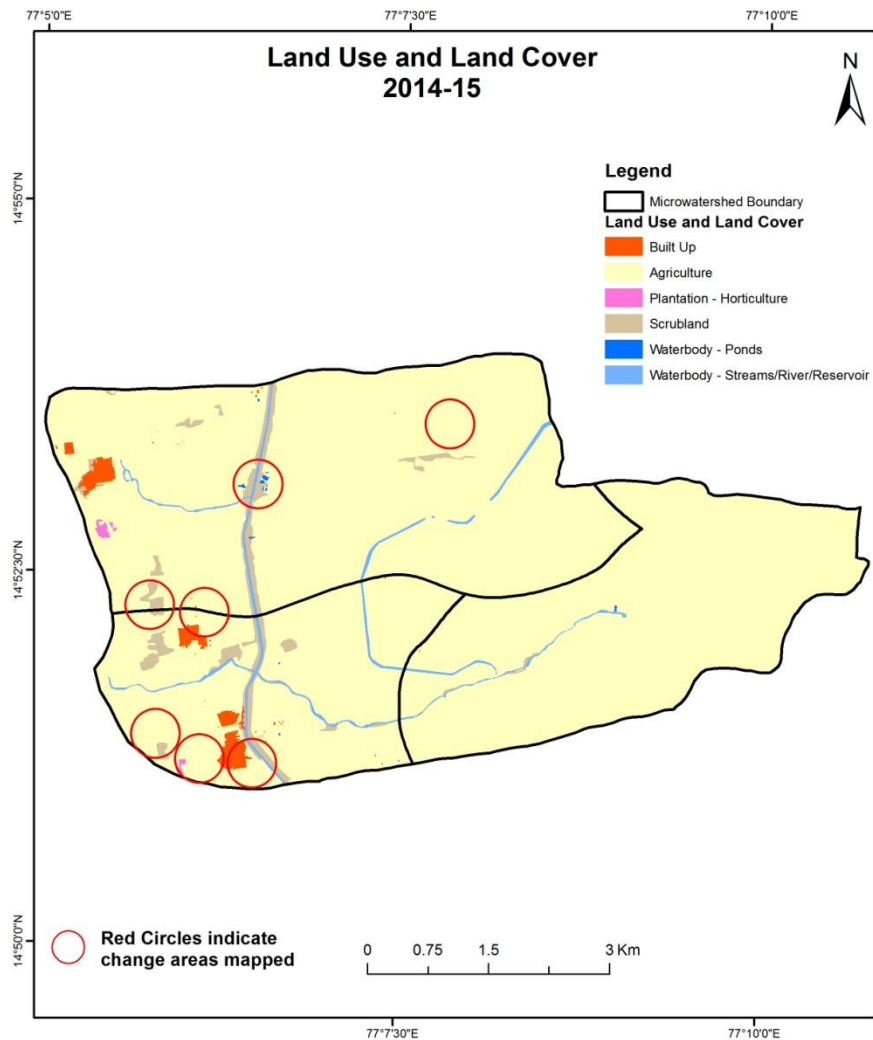
Comparative assessment of Land Use and Land Cover for Pre and Post IWMP implementation (2010-11 to 2014-15)

Scale: 1:10000



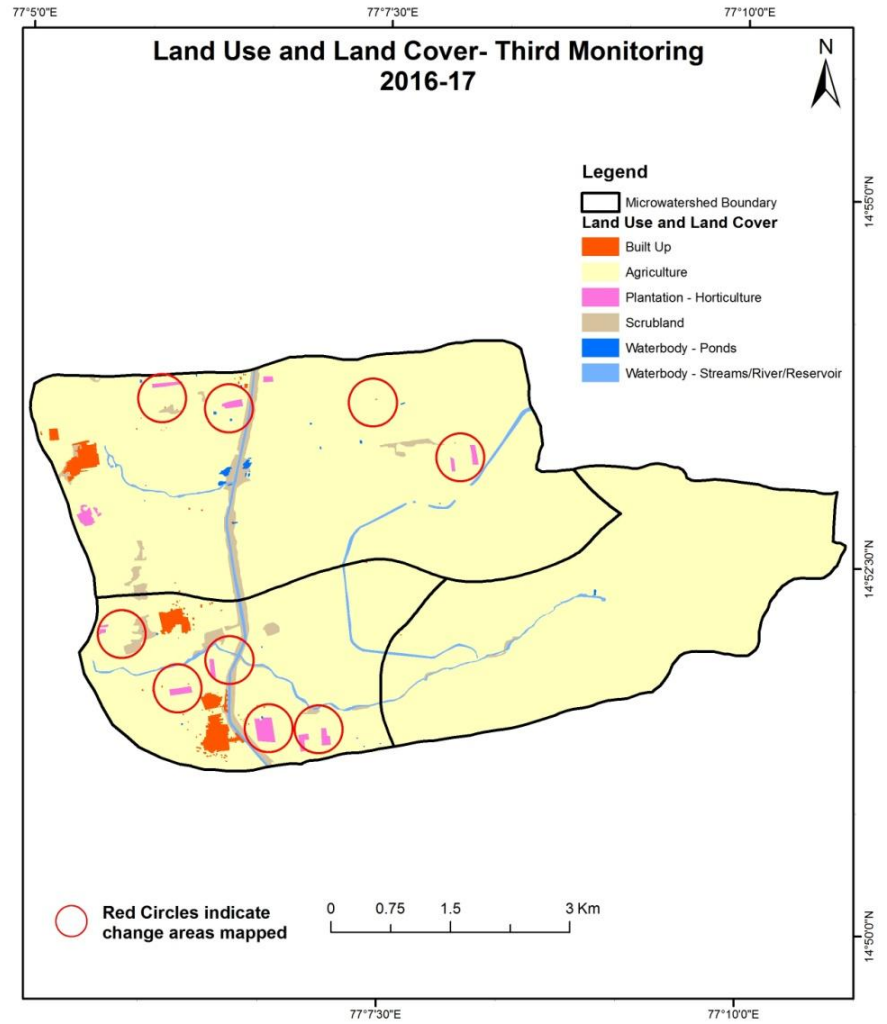
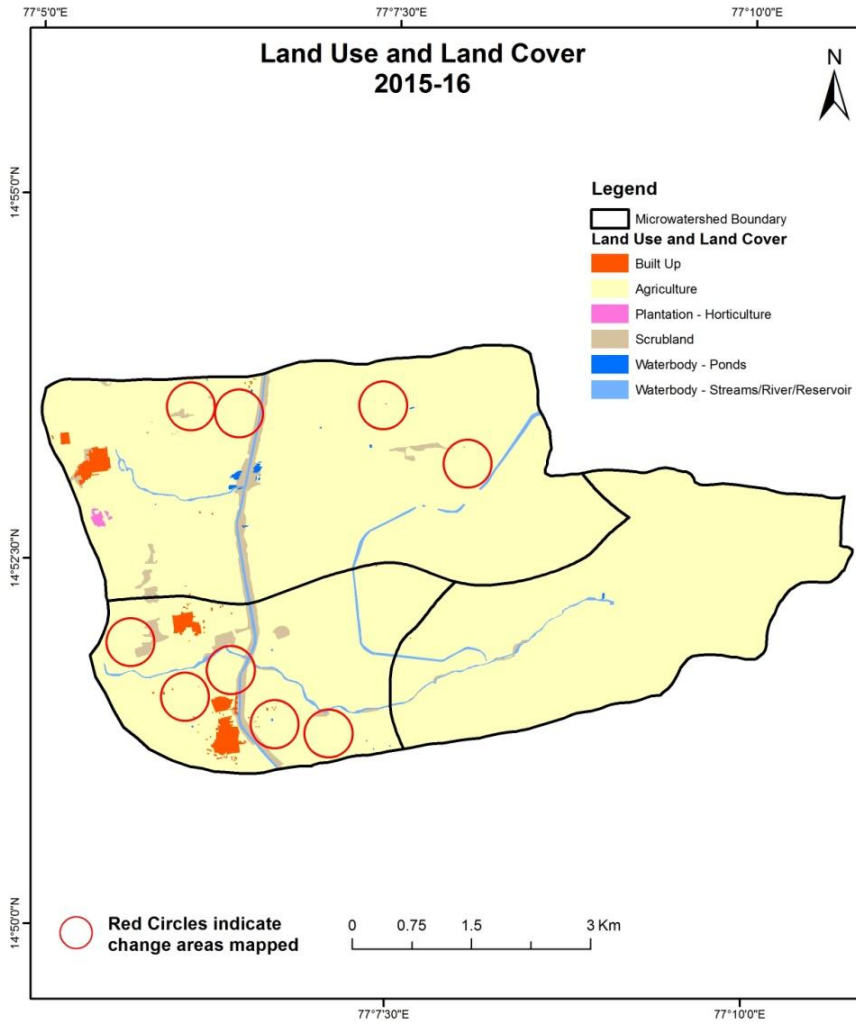
Comparative assessment of Land Use and Land Cover for Pre and Post IWMP implementation (2014-15 to 2015-16)

Scale: 1:10000



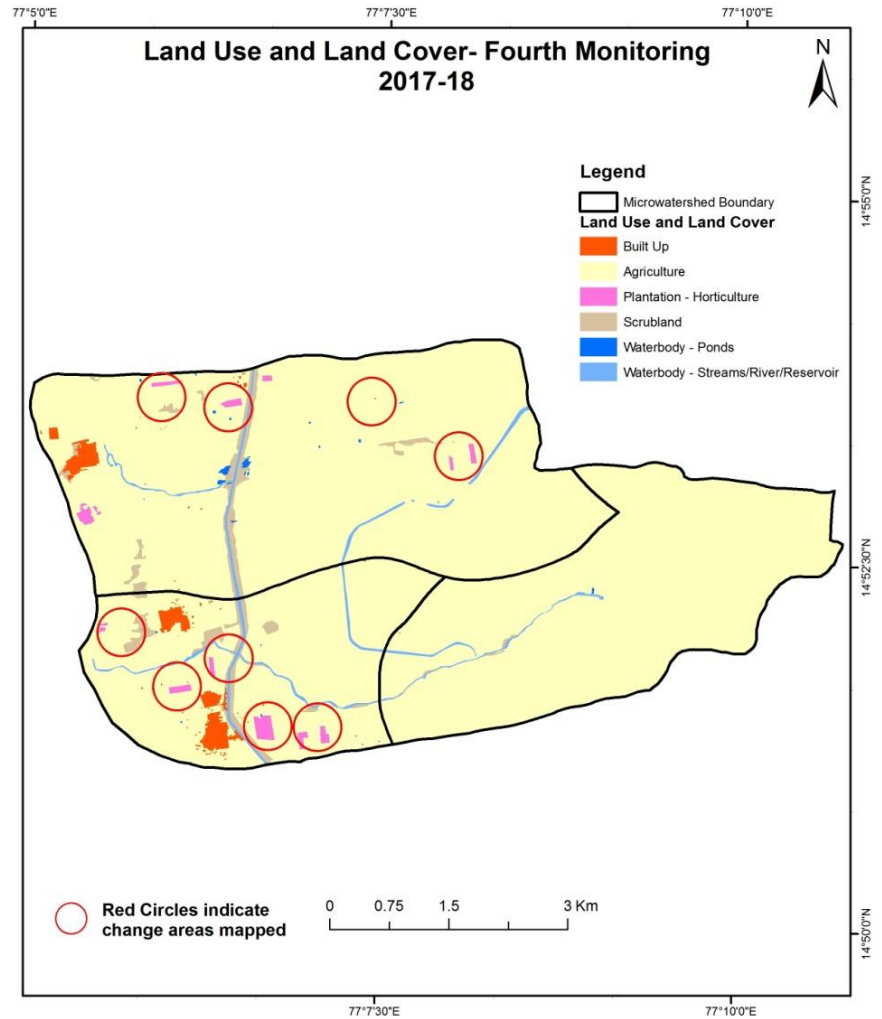
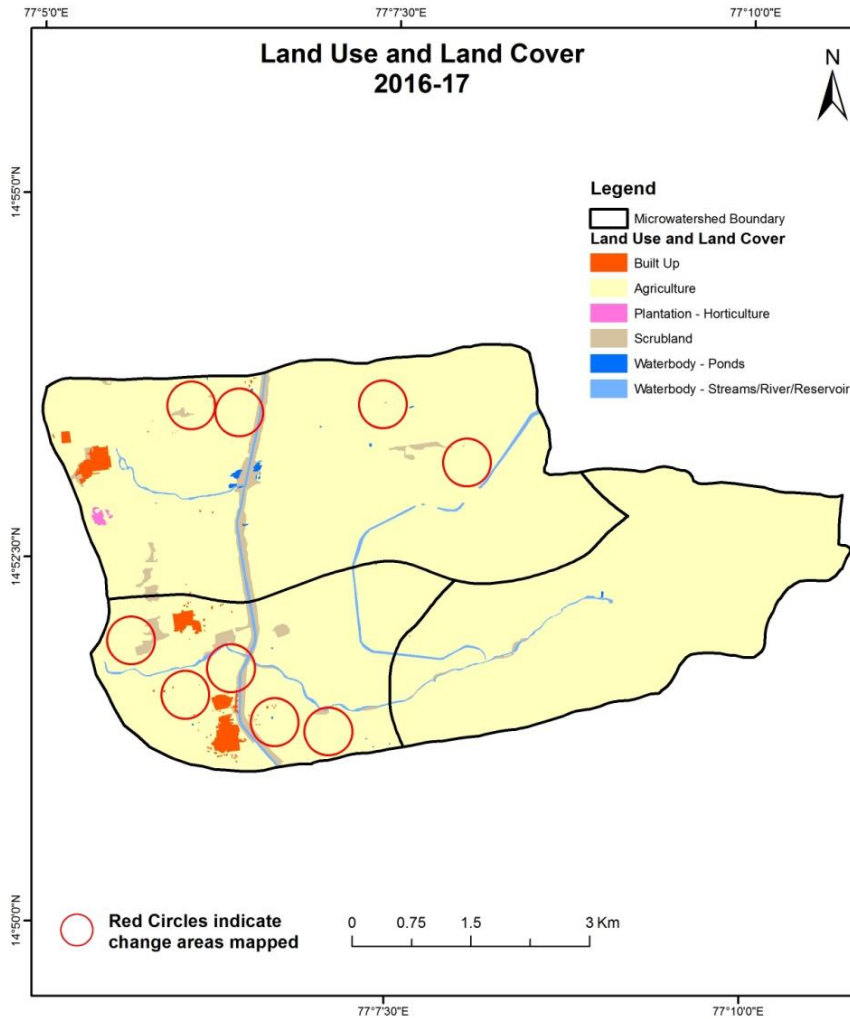
Comparative assessment of Land Use and Land Cover for Pre and Post IWMP implementation (2015-16 to 2016-17)

Scale: 1:10000



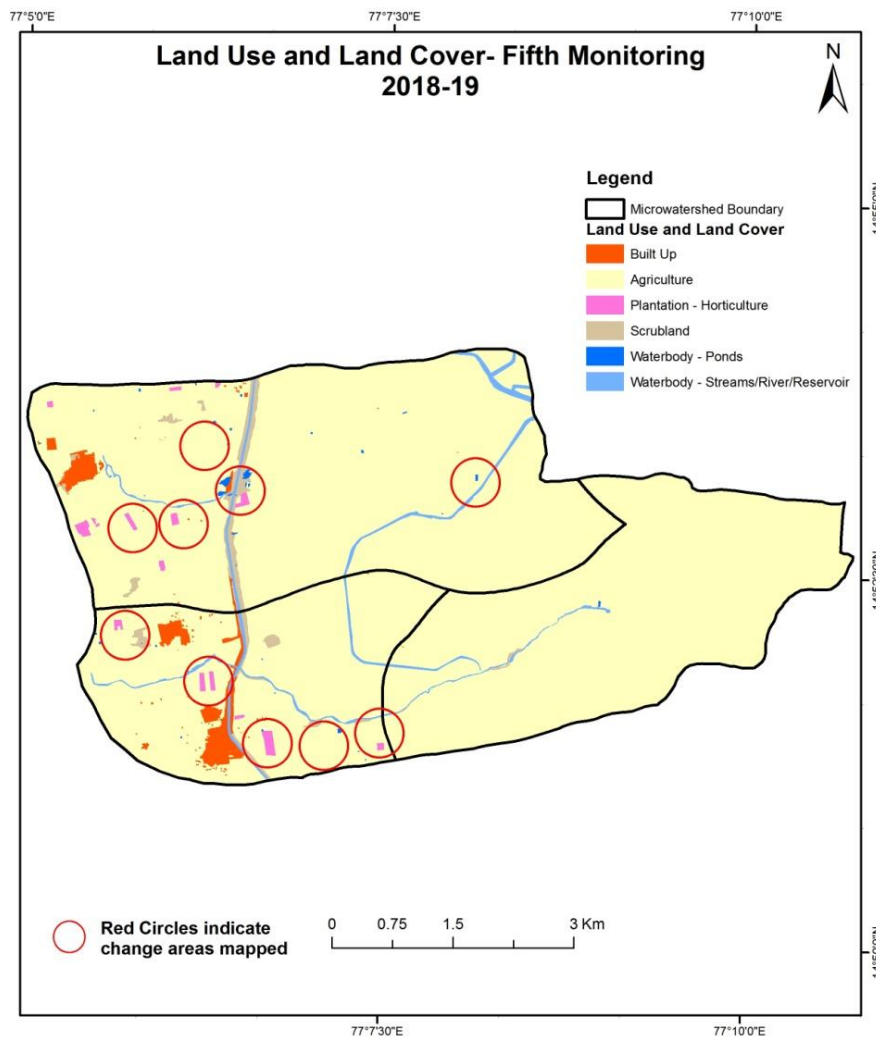
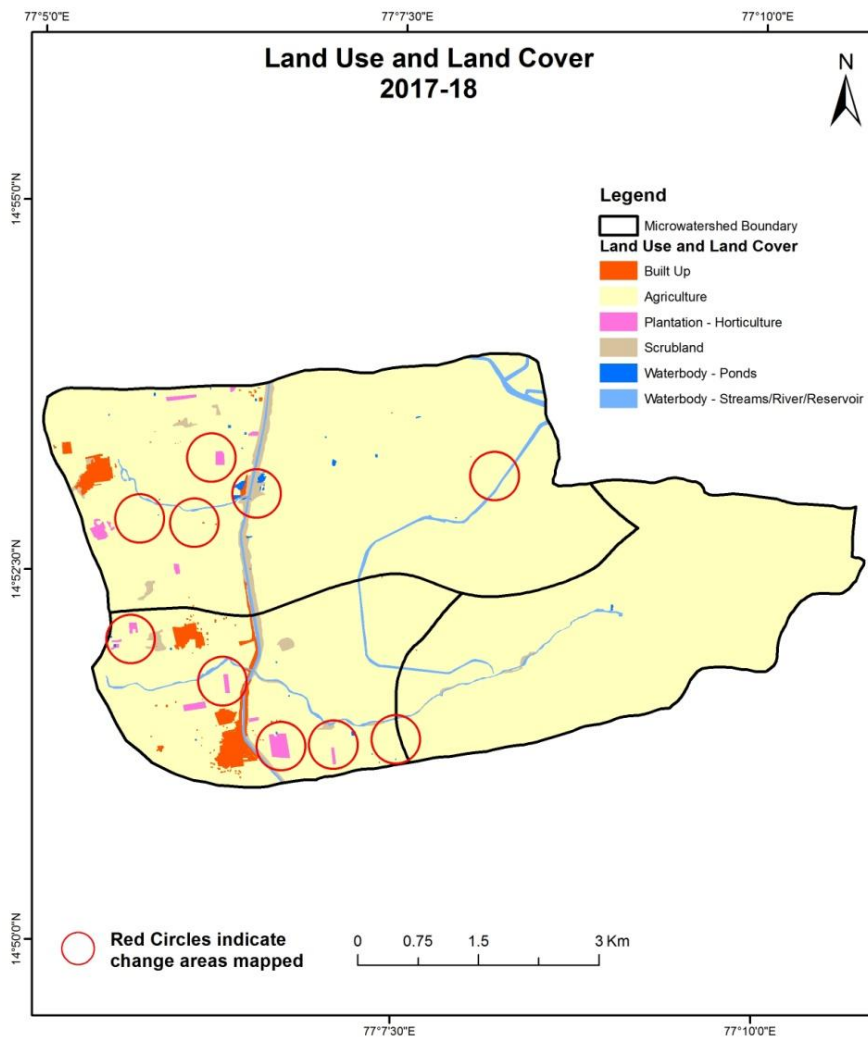
Comparative assessment of Land Use and Land Cover for Pre and Post IWMP implementation (2016-17 to 2017-18)

Scale: 1:10000



Comparative assessment of Land Use and Land Cover for Pre and Post IWMP implementation (2017-18 to 2018-19)

Scale: 1:10000

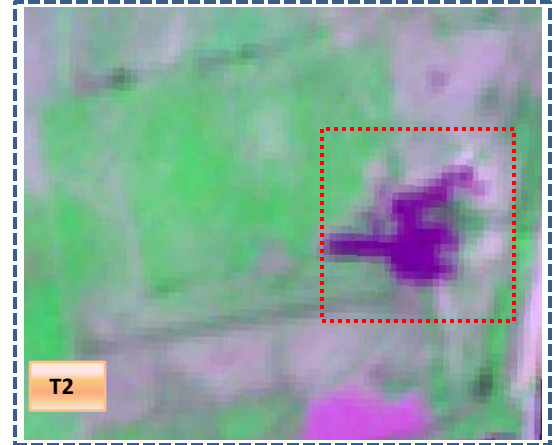


Land Use and Land Cover changes for Pre and Post treatment dates

Agriculture
to water body

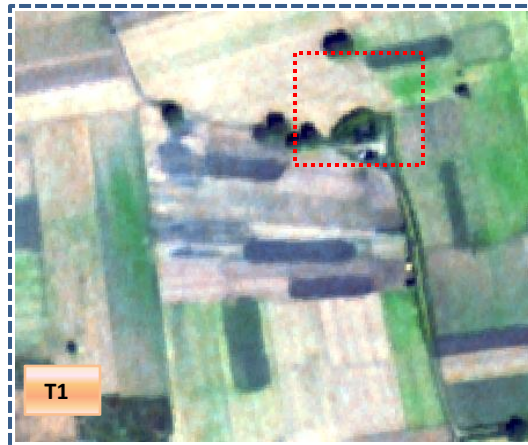


T1: 2014-15 (77°6'23.197E 14°53'4.541N)



T2: 18 September 2015

Agriculture
to water body



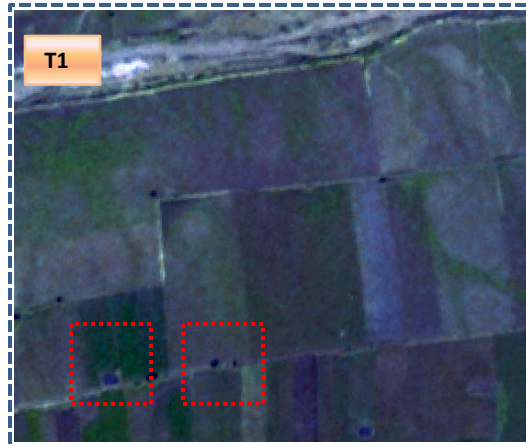
T1: 2014-15 (77°6'7.256E 14°51'21.986N)



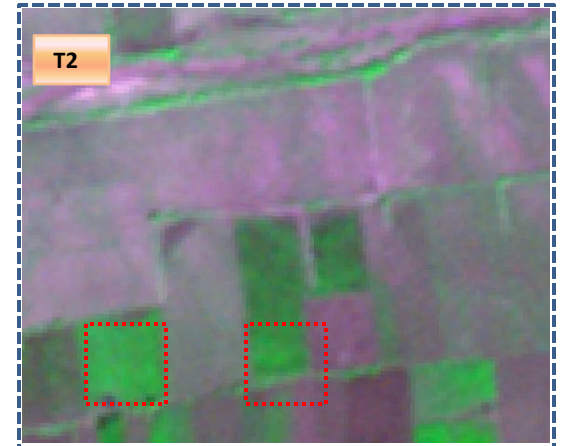
T2: 18 September 2015

Land Use and Land Cover changes for Pre and Post treatment dates

Water body to
Agriculture

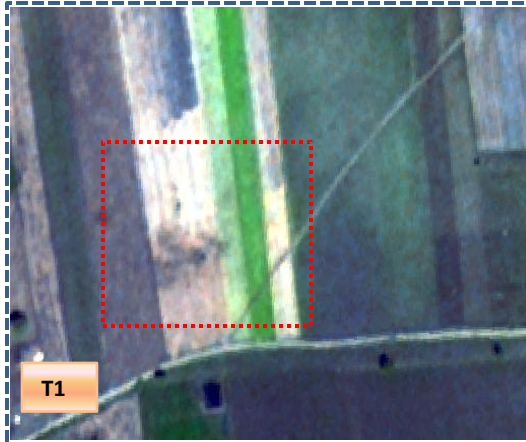


T1: 2014-15 (77°7'20.236E 14°51'16.744N)



T2: 18 September 2015

Agriculture to Built Up



T1: 2014-15 (77°7'20.236E 14°51'16.744N)



T2: 18 September 2015

Land Use and Land Cover changes for Pre and Post treatment dates

Agriculture to Built up



T0

T0: 2010-11(77°6'23.287"E 14°51'32.823"N)



T1

T1: 30 November 2014

Agriculture to Canal



T0

T0: 2010-11(77°8'18.765"E 14°53'17.646"N)



T1

T1: 30 November 2014

Land Use and Land Cover changes for Pre and Post treatment dates

Scrub to Agriculture



T0: 2010-11(77°5'43.42E 14°51'42.814N)



T1: 30 November 2014

Scrub to Agriculture



T0: 2010-11(77°6'4.227E 14°53'34.528N)



T1: 30 November 2014

Table showing change matrix depicting Land cover transitions during study period-2010-11 to 2014-15

Land cover	Monitoring period (T1)										
	Units in Hectares										Grand Total
T0	Built up	Mining/ dump	Agriculture	Plantation Horticulture	Forest	Forest Plantation	Barren Rocky	Scrub	Waterbody- Streams/River	Water body Ponds	
Built up	31.16										31.16
Mining/dump											
Agriculture	5.89		3286.00	1.66				1.43	32.76	0.76	3328.49
Plantation Horticulture			1.22	1.75							2.97
Forest											
Forest Plantation											
Barren Rocky											
Scrub	1.00		189.80	0.82				88.17	0.14	0.97	280.89
Waterbody- Streams/River			18.69						19.65		38.35
Waterbody – Ponds											
Grand Total	38.05		3495.72	4.23				89.60	52.55	1.73	3681.87

- In matrix table diagonal elements represent the both periods in the same class and off diagonal elements represents change in between the classes.
- In T0 42.49 ha of agriculture are decreased and it is converted into built-up, plantation, scrubland and water body of T1.
- In T1 209.72 ha of agriculture are increased from plantation, scrubland and water body of T0. The additional agriculture are coming from water body in T1 represents seasonal agriculture.

Table showing change matrix depicting Land cover transitions during study period-2014-15 to 2015-16

Land cover	Monitoring period (T2)										Units in Hectares		
	Built up	Mining/ dump	Agriculture	Plantation Horticulture	Forest	Forest Plantation	Barren Rocky	Scrub	Waterbody- Streams/River	Water body Ponds	Grand Total		
T1													
Built up	38.05												38.05
Mining/dump													
Agriculture	1.71		3492.26								1.74		3495.72
Plantation Horticulture			1.21	3.01									4.23
Forest													
Forest Plantation													
Barren Rocky													
Scrub			5.87					83.63			0.10		89.60
Waterbody- Streams/River									52.55				52.55
Waterbody – Ponds											1.73		1.73
Grand Total	39.75		3499.34	3.01				83.63	52.55		3.57		3681.87

- In matrix table diagonal elements represent the both periods in the same class and off diagonal elements represents change in between the classes.
- In T1 3.45 ha of agriculture are decreased and it is converted into built-up and water body of T2.
- In T2 7.08 ha of agriculture are increased from plantation and scrubland of T1. The additional agriculture are coming from waterbody in T2 represents seasonal agriculture.

Table showing change matrix depicting Land cover transitions during study period-2015-16 to 2016-17

Land cover	Monitoring period (T3)										Units in Hectares		
	Built up	Mining/ dump	Agriculture	Plantation Horticulture	Forest	Forest Plantation	Barren Rocky	Scrub	Waterbody- Streams/River	Water body Ponds	Grand Total		
Built up	39.75												39.75
Mining/dump													
Agriculture	2.86		3473.83	22.24						0.41			3499.34
Plantation Horticulture				3.01									3.01
Forest													
Forest Plantation													
Barren Rocky													
Scrub	0.53							83.05		0.06			83.63
Waterbody- Streams/River									52.55				52.55
Waterbody – Ponds										3.57			3.57
Grand Total	43.14		3473.83	25.25				83.05	52.55	4.05			3681.87

- In matrix table diagonal elements represent the both periods in the same class and off diagonal elements represents change in between the classes.
- In T2 25.51 ha of agriculture are decreased and it is converted into built-up, mining/dump, plantation, scrubland and water body of T3.
- In No change was observed in T3 of T2. The additional agriculture are coming from waterbody in T3 represents seasonal agriculture.

Table showing change matrix depicting Land cover transitions during study period-2016-17 to 2017-18

Land cover	Monitoring period (T4)										Units in Hectares	
	Built up	Mining/ dump	Agriculture	Plantation Horticulture	Forest	Forest Plantation	Barren Rocky	Scrub	Waterbody- Streams/River	Water body Ponds	Grand Total	
T3												
Built up	43.14										43.14	
Mining/dump												
Agriculture	3.25		3451.09	6.07				12.64	0.78		3473.83	
Plantation Horticulture			8.97	16.20					0.08		25.25	
Forest												
Forest Plantation												
Barren Rocky												
Scrub	11.06		23.21				48.73		0.04		83.05	
Waterbody- Streams/River								52.55			52.55	
Waterbody – Ponds									4.05		4.05	
Grand Total	57.46		3483.27	22.26			48.73	65.19	4.95		3681.87	

- In matrix table diagonal elements represent the both periods in the same class and off diagonal elements represents change in between the classes.
- In T3 22.74 ha of agriculture are decreased and it is converted into built-up, plantation and water body of T4.
- In T4 32.18 ha of agriculture are increased from plantation and scrubland of T3. The additional agriculture are coming from waterbody in T4 represents seasonal agriculture.

Table showing change matrix depicting Land cover transitions during study period-2017-18 to 2018-19

Land cover	Monitoring period (T5)										Units in Hectares	
	Built up	Mining/ dump	Agriculture	Plantation Horticulture	Forest	Forest Plantation	Barren Rocky	Scrub	Waterbody- Streams/River	Water body Ponds	Grand Total	
Built up	57.46										57.46	
Mining/dump												
Agriculture	1.00		3474.43	7.60						0.24	3483.27	
Plantation Horticulture			11.33	10.93							22.26	
Forest												
Forest Plantation												
Barren Rocky												
Scrub			0.83					47.91			48.73	
Waterbody- Streams/River									65.19		65.19	
Waterbody – Ponds			0.34							4.60	4.95	
Grand Total	58.46		3486.94	18.54				47.91	65.19	4.84	3681.87	

- In matrix table diagonal elements represent the both periods in the same class and off diagonal elements represents change in between the classes.
- In T4 8.84 ha of agriculture are decreased and it is converted into built-up, plantation and water body of T5.
- In T5 12.50 ha of agriculture are increased from plantation, scrubland and water body of T4. The additional agriculture are coming from waterbody in T5 represents seasonal agriculture.

Conclusion

1. DPR of the project is uploaded on to Bhuvan Portal.
2. The LULC shows that there is an increase in Crop land, Built up area, Reservoir / Tanks & decrease in Scrubland as presented in the change matrix for different years.
3. There is an increase of 31.69 Hectares in Reservoir / Tanks area as compared between baseline LU/LC data 2010-11 (T0) & 2018-19 (T5) years.
4. There is an increase of 167.23, 2.63, 9.44 & 3.66 Hectares From T0 to T1, T1 to T2, T3 to T4 & T4 to T5 and There is an decrease of 25.51 Hectares From T2 to T3. The overall increase of 158.45 Hectares in cropland area as compared between baseline LU/LC data 2010-11 (T0) & 2018-19 (T5) years.
5. There is increase of 15.56 ha of the Plantation/Horticulture area has been increased between 2010-11 (T0) & 2018-19 (T5) years.
6. There is a decrease of 232.99 Hectares in Scrubland area as compared between 2010-11 (T0) & 2018-19 (T5) years.
7. Farm ponds (21) is visible on IWMP Bhuvan Srishti portal out of Bhuvan Drishti photo of Farm ponds (20) verified from the portal.