



OMIDYAR
NETWORK



Investment
firm focused
on social
impact

Funded by
philanthropic
capital of Pam
& Pierre
Omidyar,
founder of
eBay

Part of a global
network

OVERVIEW



We invest in bold entrepreneurs who help create a meaningful life for every Indian

OUR PURPOSE




76
active
investments

₹2100 cr.
(\$290M)
invested

300M
lives touched

OUR PROGRESS



Dual
chequebook:
equity
investments
and grants


Tech DNA:
Silicon Valley
heritage

Investments at
three levels:
entrepreneurs,
market
infrastructure,
policy

A UNIQUE APPROACH




**Digital
Identity**




Education



**Emerging
Tech**



**Financial
Inclusion**



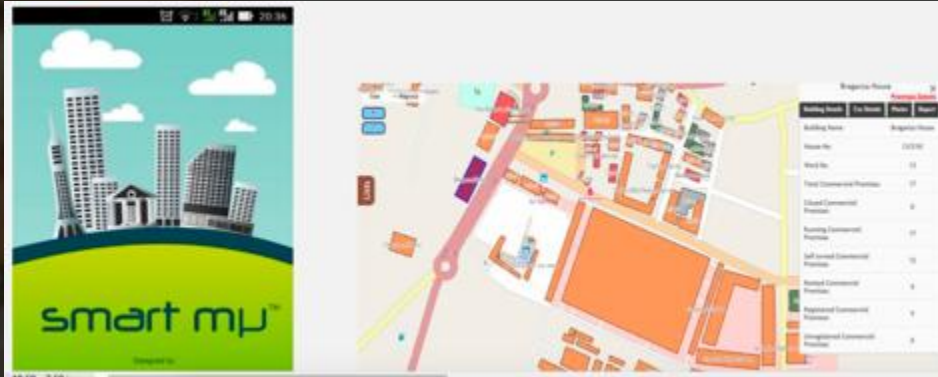
**Governance
& Citizen
Engagement**



**Property
Rights**

FOCUS AREAS

Property tax and geospatial solutions for ULBs



Drone maps of slums

Case Study: In Odisha, we used drones to map settlements, engage communities and expedite delivery of 60,000+ titles in slums

Context

- As per the 2011 census, **23% of the urban population** of the state (~5L households) was living in slums without any security of tenure

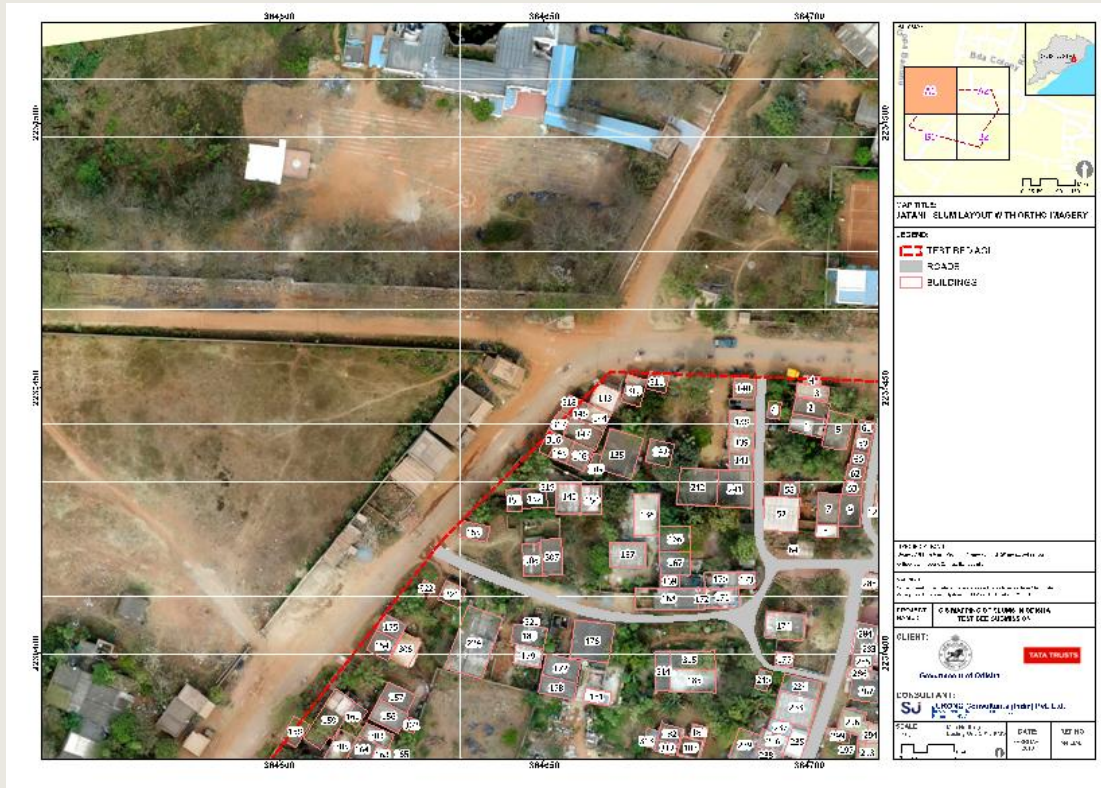
Objective

- The Act intends to **assign land rights to eligible slum dwellers** for redevelopment, rehabilitation and up-gradation of slums in the NAC areas and Municipalities in urban Odisha

Key Activities

- Selection, training and on-boarding of external partners and district level stakeholders
- Identification of eligible slums and conducting drone surveys for accurate mapping of households
- Community mobilization, formation of slum dwellers associations and collection of household data
- Community participation in verification of land rights claims (plot, boundary, family details)
- Creation of slum layout and settlement maps and collective application for land rights
- Validation of household eligibility and dispute resolution for granting land rights
- Linking of land rights to housing benefits, civic services, amenities, etc

Drones are highly accurate, efficient and...



...is a powerful tool to include communities and reduce conflict compared to traditional forms of mapping

