

One Day Workshop

Dissemination of Land Resource Products of Andhra Pradesh

Land Use Planning and Utilisation Trends

- ❖ Urban area planning
- ❖ Industrial investment zones planning
- ❖ Eco sensitive area planning
- ❖ Mining area planning
- ❖ Watershed management for productivity of agricultural lands
- ❖ Coastal zone planning
- ❖ Land administration
- ❖ Infrastructure planning

LAND UTILISATION PATTERN OVER GOVERNMENT LANDS IN SRIKAKULAM DISTRICT USING GEO-SPATIAL TECHNIQUES

Government Lands in 22 A List

22 A list, the identification of prohibited lands and Government lands were prepared based on the category wise (1(a), 1(b), 1(c), 1(d), 1(e)). All the lists furnished by the concerned authorities shall be filed in a separate new file book titled as intimations / notifications of prohibited properties under Sec 22(A). Type of lands which will be covered under type of categories are:

- 22(A)(1)(a) - Relating to Assigned lands.
- 22(A)(1)(b) - Relating to Lands owned by Government.
- 22(A)(1)(c) - Relating to Endowments / Wakfs lands.
- 22(A)(1)(d) - Relating to Surplus Lands.
- 22(A)(1)(e) - Relating to lands having interest of Central or State Government.

22(A)(1)(a) - Relating to Assigned lands : the alienation or transfer, prohibited under any statute of State or Central Government

22(A)(1)(b) - Relating to Lands owned by Government : transfer of property by way of sale, agreement of sale, gift, exchange or lease ,owned by the State or Central Government (when executed by persons other than those Statutorily empowered to do so)

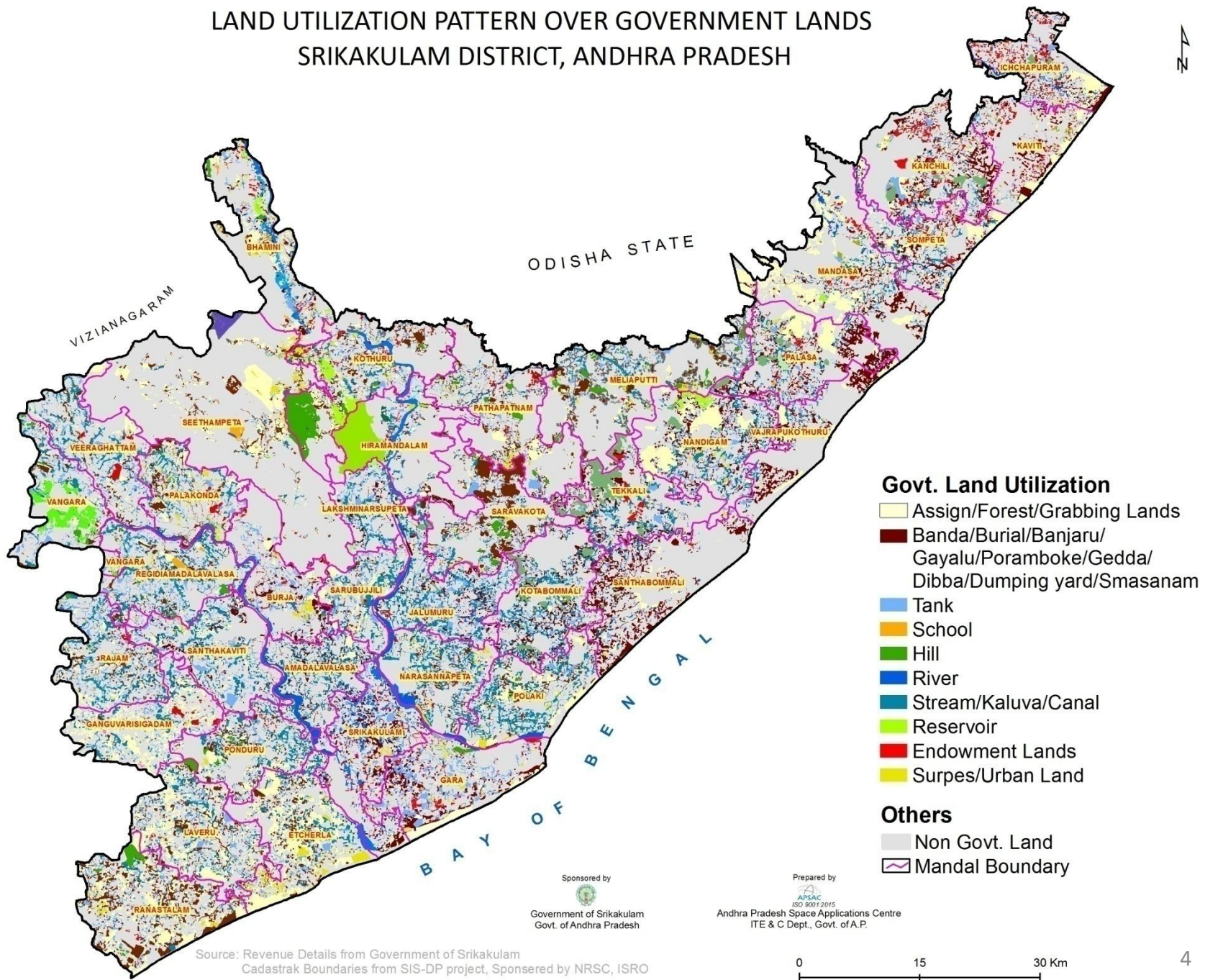
22(A)(1)(c) - Relating to Endowments /Wakfs lands : transfer of property by way of sale, agreement of sale, gift, exchange or lease exceeding (ten) 10 years, owned by religious and charitable endowments or by Wakfs (when executed by persons other than those statutorily empowered to do so)

22(A)(1)(d) - Relating to Surplus Lands: transfer of Agricultural or urban lands declared as surplus under the Andhra Pradesh Land Reforms (Ceiling on Agricultural Holdings) Act, 1973 and the Urban Land (Ceiling and Regulation) Act, 1976.

22(A)(1)(e) - Relating to lands having interest of Central or State Government : Transfer of such properties (in which avowed or accrued interests of Central and State Governments, Local Bodies, Educational, Cultural, Religious and Charitable Institutions, those attached by Civil, Criminal, Revenue Courts and Direct and Indirect Tax Laws and others which are likely to adversely affect these interest) notified by the State Government prohibiting the registration

LAND UTILIZATION PATTERN OVER GOVERNMENT LANDS SRIKAKULAM DISTRICT, ANDHRA PRADESH

1-2



- Govt. Land Utilization**
- Assign/Forest/Grabbing Lands
 - Banda/Burial/Banjaru/
Gayalu/Poramboke/Gedda/
Dibba/Dumping yard/Smasanam
 - Tank
 - School
 - Hill
 - River
 - Stream/Kaluva/Canal
 - Reservoir
 - Endowment Lands
 - Surpes/Urban Land
- Others**
- Non Govt. Land
 - Mandal Boundary

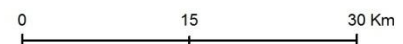
Sponsored by

 Government of Srikakulam
 Govt. of Andhra Pradesh

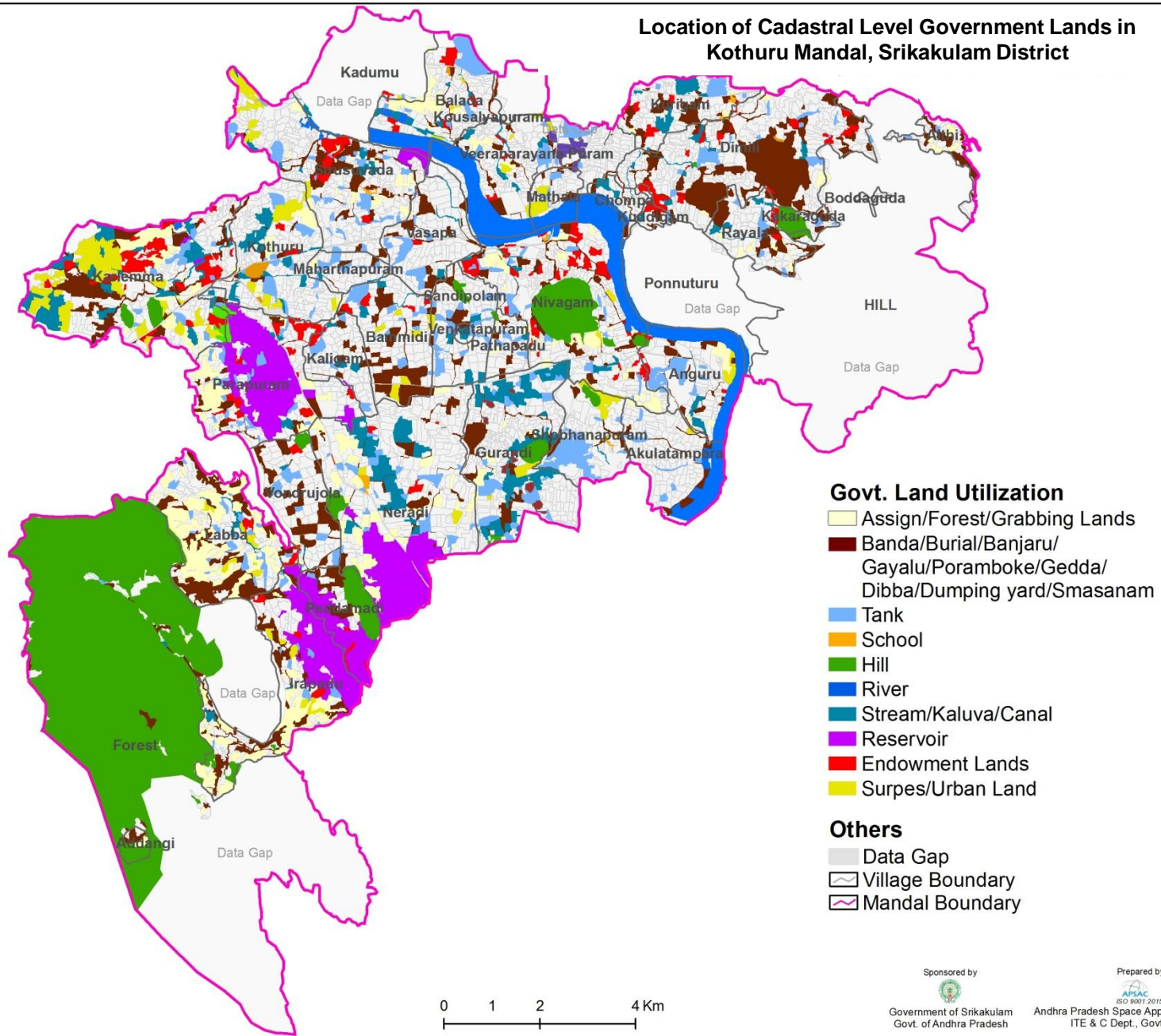
Prepared by

 APSAC
 ISO 9001:2015
 Andhra Pradesh Space Applications Centre
 ITE & C Dept., Govt. of A.P.

Source: Revenue Details from Government of Srikakulam
 Cadastrak Boundaries from SIS-DP project, Sponsored by NRSC, ISRO



Location of Cadastral Level Government Lands in Kothuru Mandal, Srikakulam District

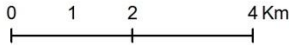


Govt. Land Utilization

- Assign/Forest/Grabbing Lands
- Banda/Burial/Banjaru/ Gayalu/Poramboke/Gedda/ Dibba/Dumping yard/Smasanam
- Tank
- School
- Hill
- River
- Stream/Kaluva/Canal
- Reservoir
- Endowment Lands
- Surpes/Urban Land

Others

- Data Gap
- Village Boundary
- Mandal Boundary



Sponsored by

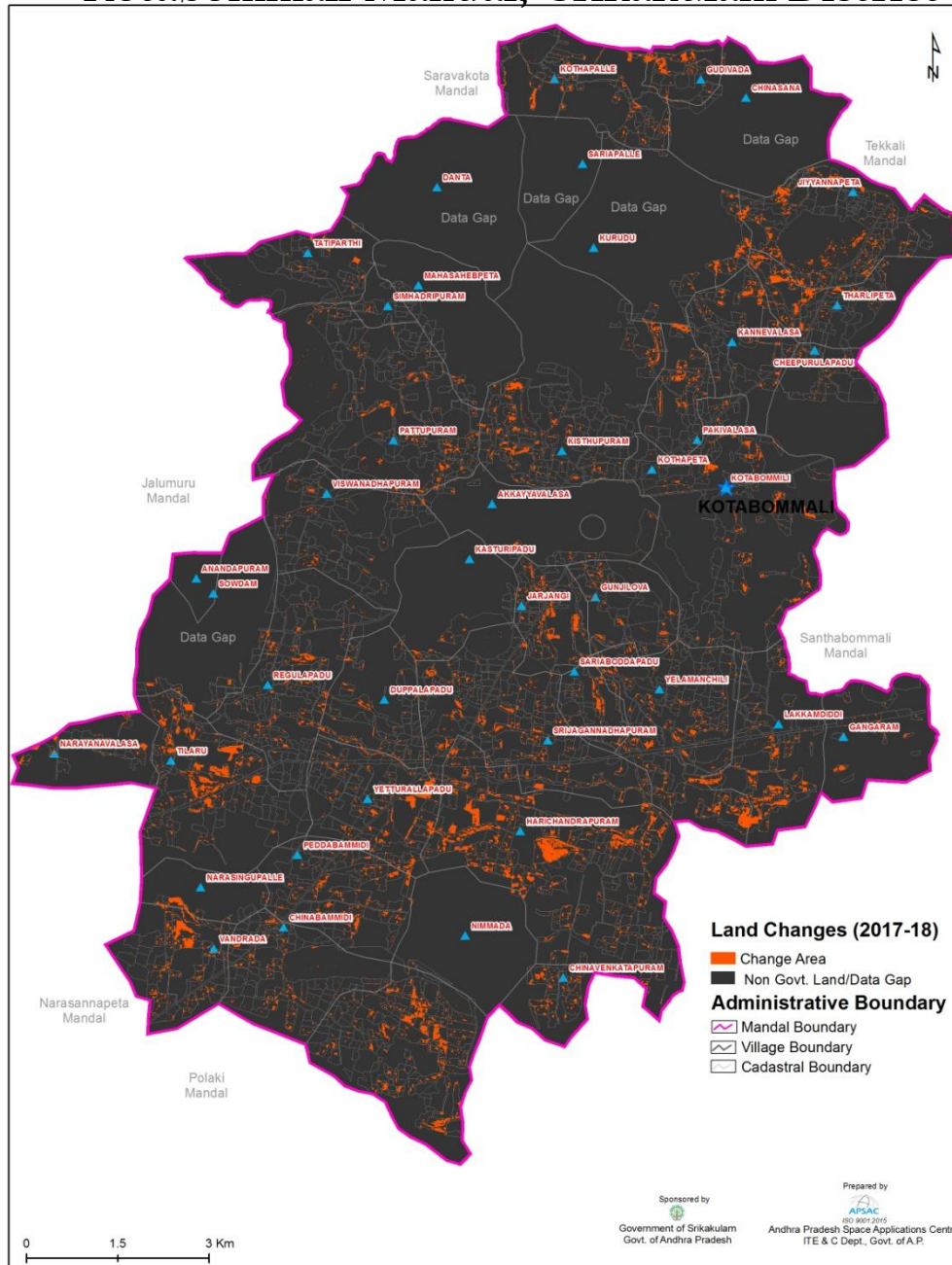


Prepared by

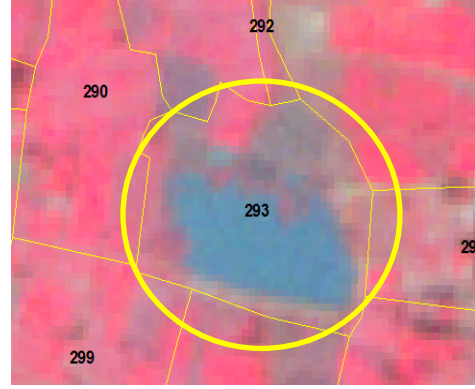
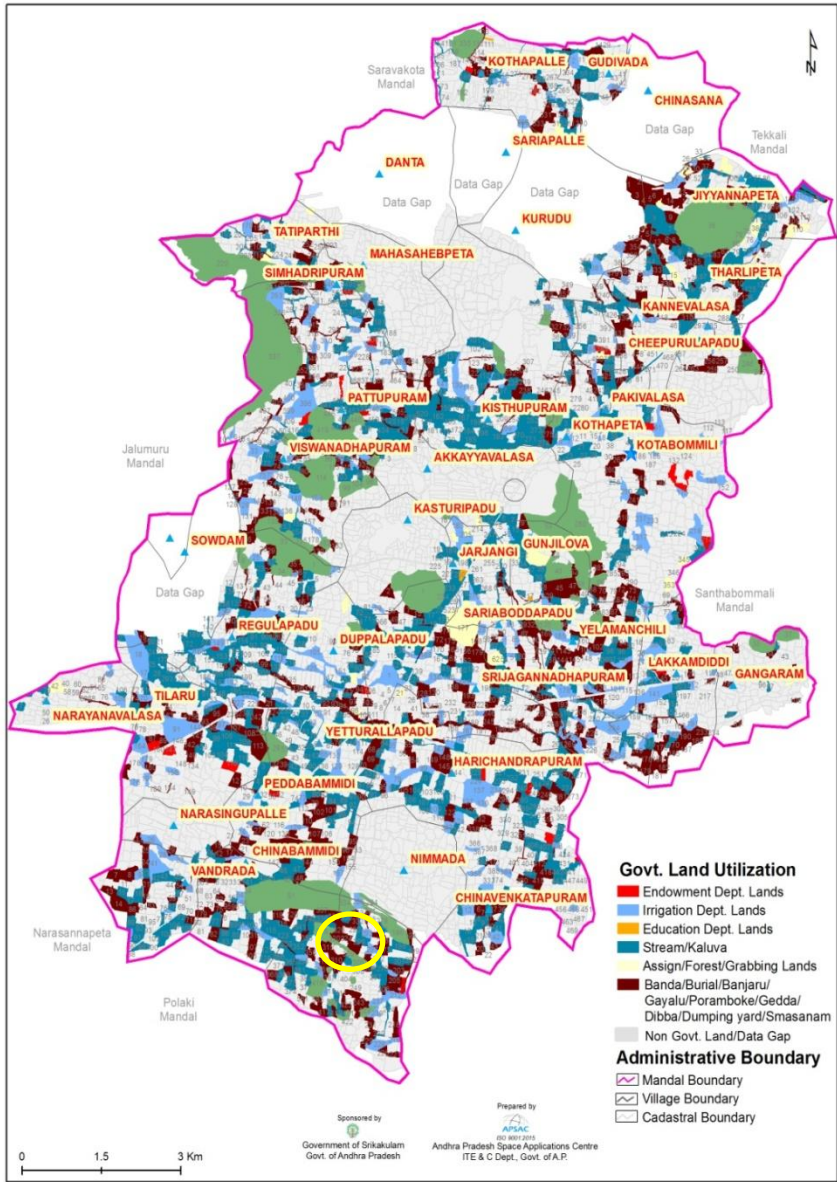


Land Use/Land Cover Change Map (2017-2018)

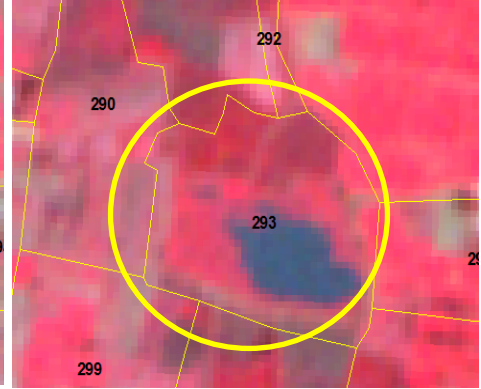
Kotabommali Mandal, Srikakulam District



Changes in Survey number wise Government lands From 2017 to 2018 in Chittivalasa Village, Kotabommali Mandal



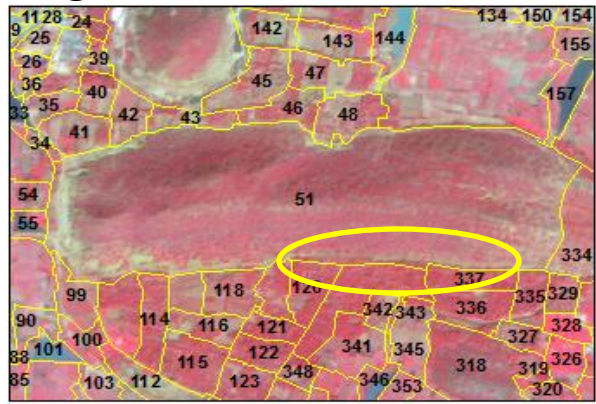
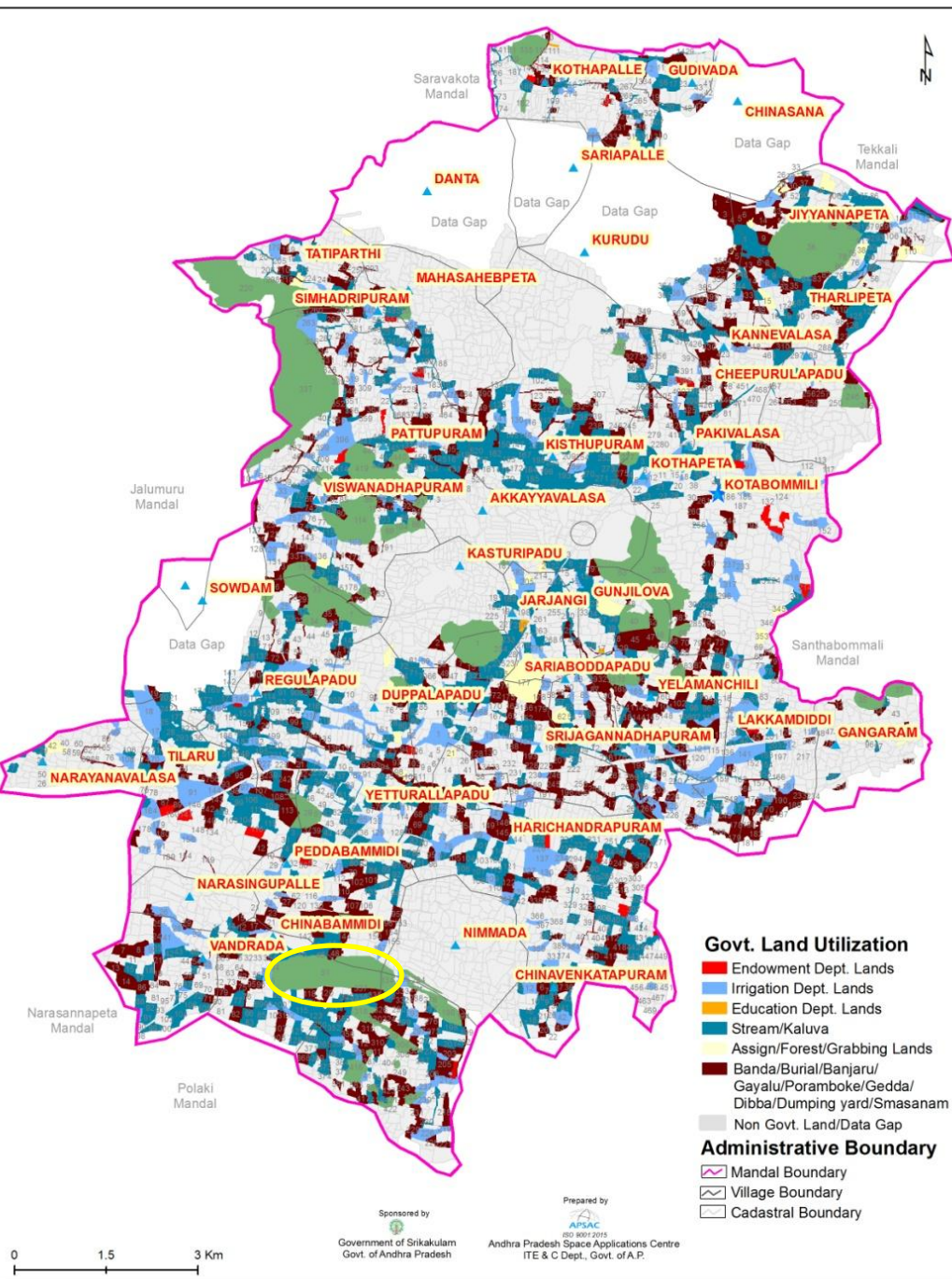
IRS R2 LISS IV January, 2017



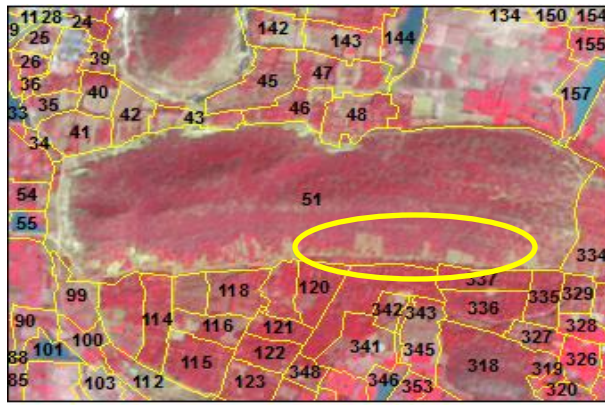
IRS R2 LISS IV February, 2018

63	Srikakulam	Kotabommali	Chittivalasa	288-1	-	-	0.72	Gorja	Revenue Dept
64	Srikakulam	Kotabommali	Chittivalasa	290-4	-	-	0.30	Kaluva	Irrigation Dept
65	Srikakulam	Kotabommali	Chittivalasa	290-18	-	-	0.20	Gorja	Revenue Dept
66	Srikakulam	Kotabommali	Chittivalasa	292	-	-	0.37	Gedda	Irrigation Dept
67	Srikakulam	Kotabommali	Chittivalasa	293	-	-	6.30	Butchayya	Irrigation Dept
68	Srikakulam	Kotabommali	Chittivalasa	294-1	-	-	0.26	Gorja	Revenue Dept
69	Srikakulam	Kotabommali	Chittivalasa	296-14	-	-	0.41	Gorja	Revenue Dept
70	Srikakulam	Kotabommali	Chittivalasa	297-	-	-	7.81	Mamidi	Irrigation Dept
71	Srikakulam	Kotabommali	Chittivalasa	298-3	-	-	0.11	Kaluva	Irrigation Dept
72	Srikakulam	Kotabommali	Chittivalasa	298-5	-	-	0.44	Kaluva	Irrigation Dept

Changes in Survey number wise Government lands From 2017 to 2018 in Chinnabammidi Village, Kotamommali Mandal



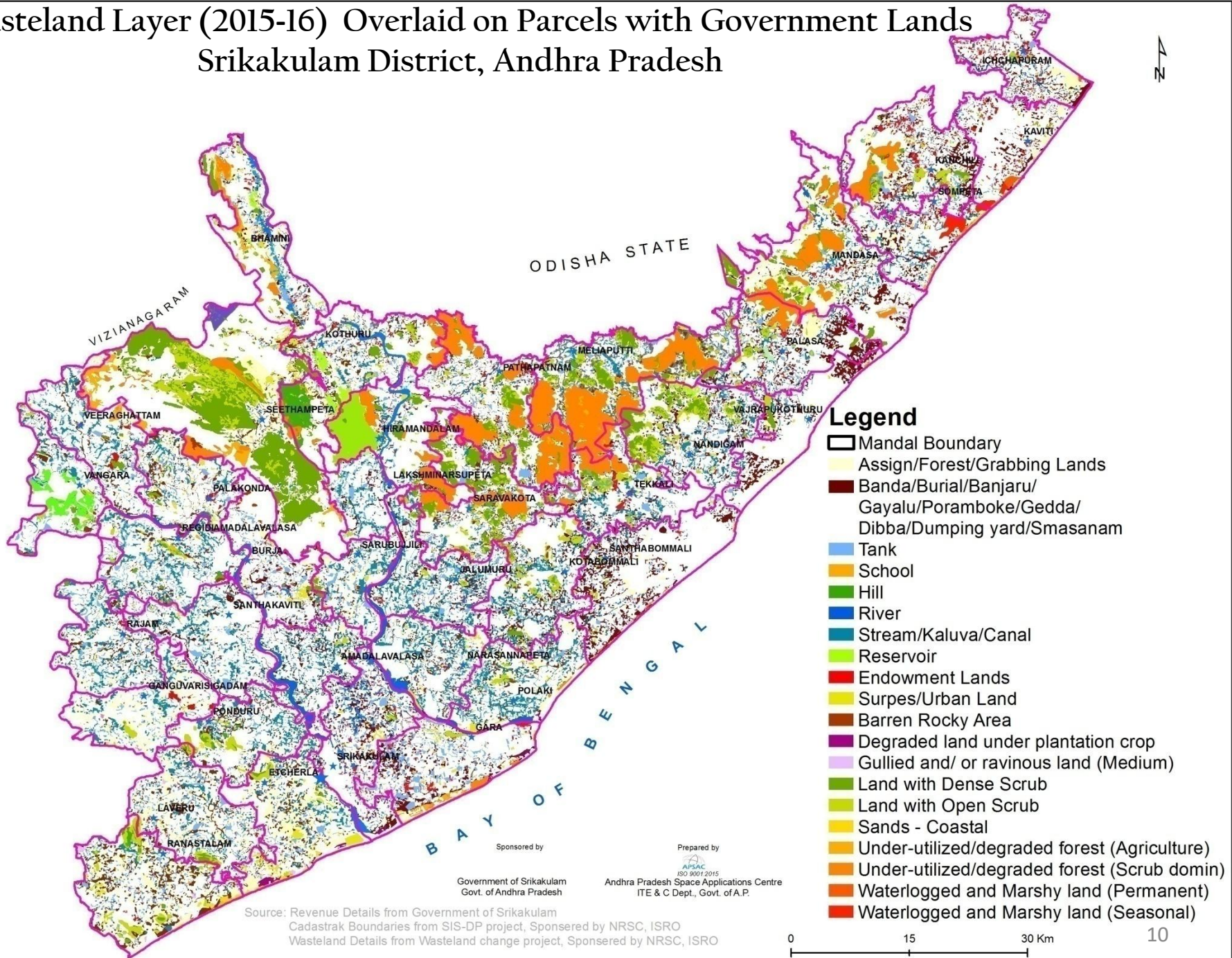
IRS R2 LISS IV January, 2017



IRS R2 LISS IV February, 2018

Sl. No.	Village	Survey Number	Area (Ha)	Area (Acres)	Area (Cents)	Land Use	Department	
33	Kotabommali	Chinnabammidi	47-23	-	-	0.44	Kaluva	Irrigation Dept
34	Kotabommali	Chinnabammidi	48-3	-	-	0.16	Metta	Revenue Dept
35	Kotabommali	Chinnabammidi	51	-	-	250.00	Tivvakonda	Revenue Dept
36	Kotabommali	Chinnabammidi	54-6	-	-	0.74	Koneru	Irrigation Dept
37	Kotabommali	Chinnabammidi	55-6	-	-	2.60	Seetasagaram	Irrigation Dept
38	Kotabommali	Chinnabammidi	56-3	-	-	0.84	Kaluva	Irrigation Dept

Wasteland Layer (2015-16) Overlaid on Parcels with Government Lands Srikakulam District, Andhra Pradesh



Legend

- Mandal Boundary
- Assign/Forest/Grabbing Lands
- Banda/Burial/Banjaru/
Gayalu/Poramboke/Gedda/
Dibba/Dumping yard/Smasanam
- Tank
- School
- Hill
- River
- Stream/Kaluva/Canal
- Reservoir
- Endowment Lands
- Surpes/Urban Land
- Barren Rocky Area
- Degraded land under plantation crop
- Gullied and/ or ravinous land (Medium)
- Land with Dense Scrub
- Land with Open Scrub
- Sands - Coastal
- Under-utilized/degraded forest (Agriculture)
- Under-utilized/degraded forest (Scrub domin)
- Waterlogged and Marshy land (Permanent)
- Waterlogged and Marshy land (Seasonal)

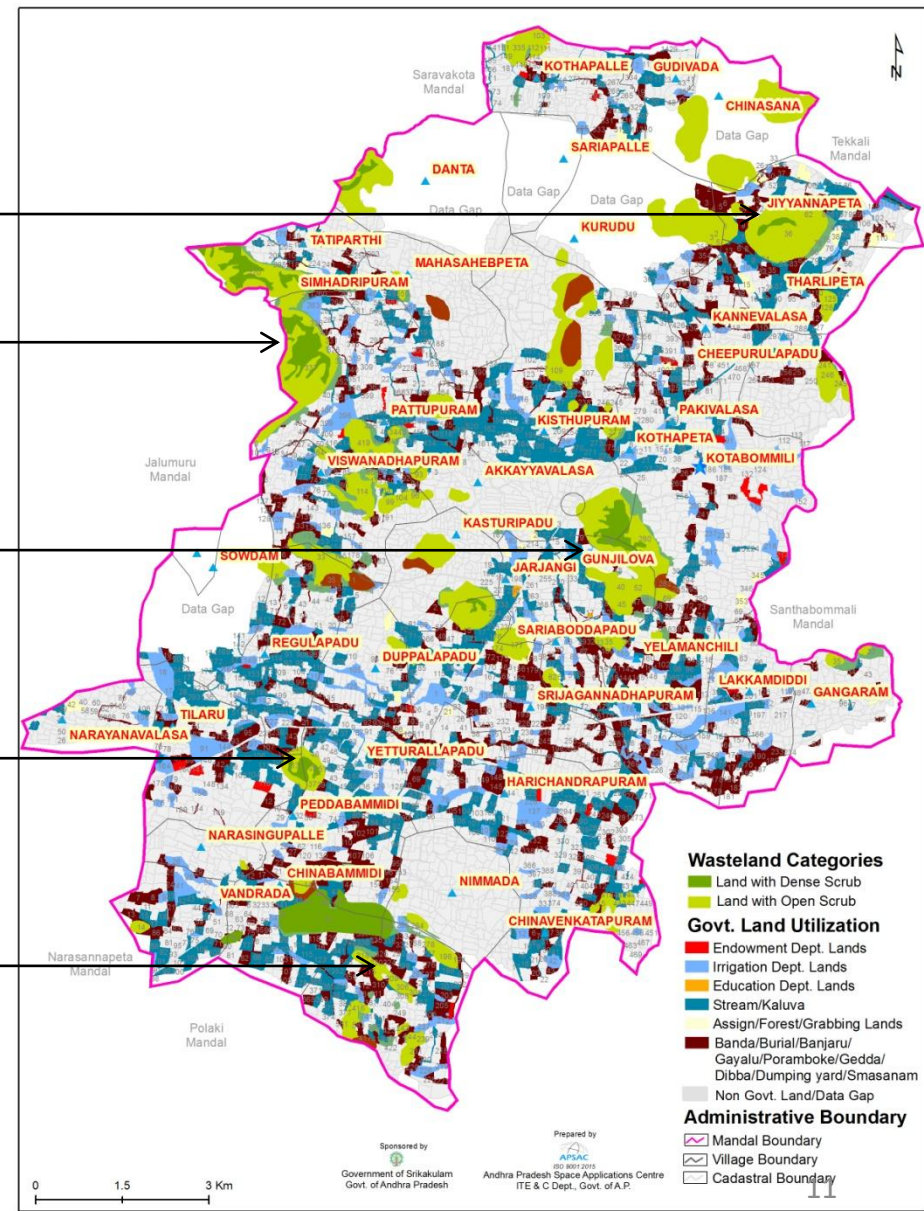
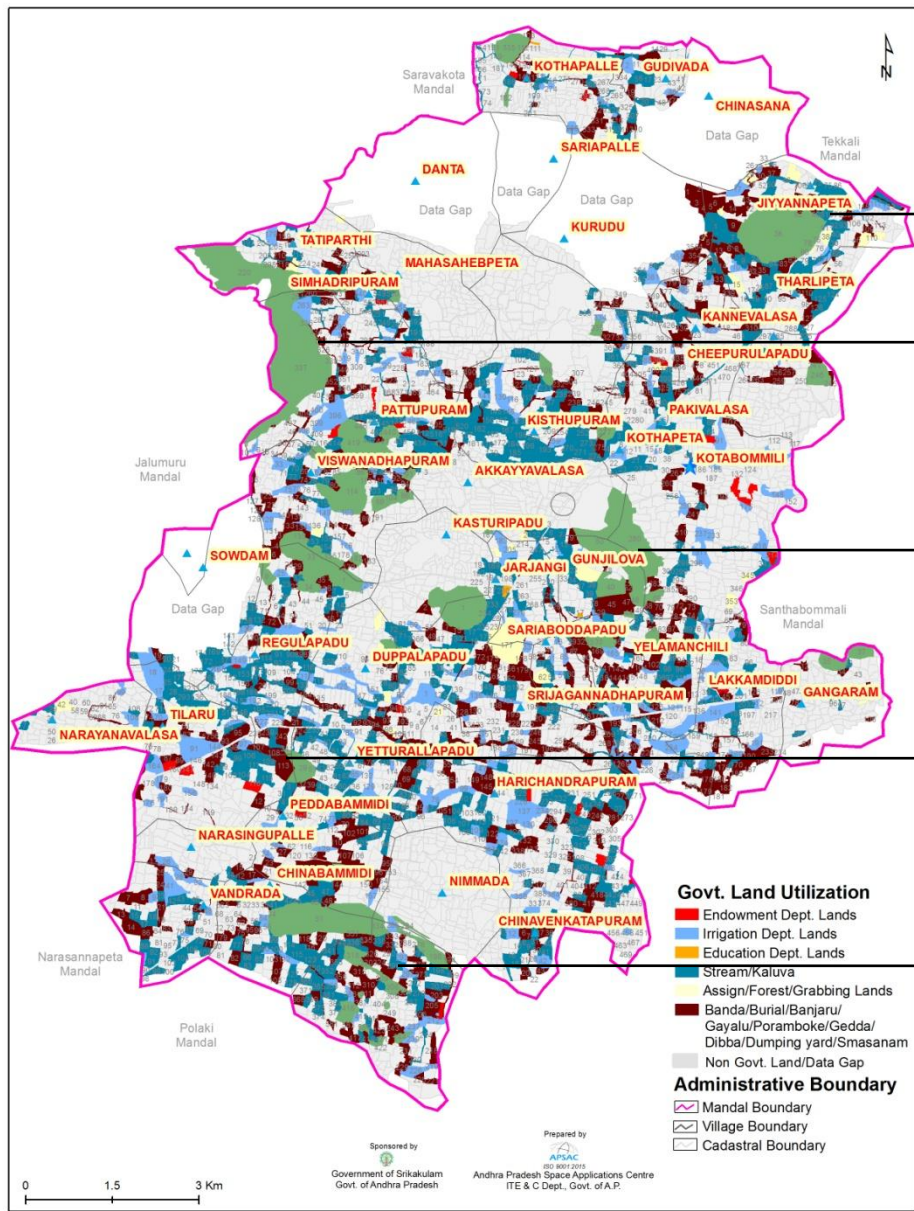
Source: Revenue Details from Government of Srikakulam
Cadastral Boundaries from SIS-DP project, Sponsored by NRSC, ISRO
Wasteland Details from Wasteland change project, Sponsored by NRSC, ISRO

Sponsored by
Government of Srikakulam
Govt. of Andhra Pradesh

Prepared by
APSC
ISO 9001:2015
Andhra Pradesh Space Applications Centre
ITE & C Dept., Govt. of A.P.

0 15 30 Km 10

Wasteland Layer (2015-16) Overlaid on Parcels with Government Land Kotabommali Mandal, Srikakulam District, Andhra Pradesh



URBAN VEGETATION EXTENT IN 16 ULBs IN ANDHRA PRADESH

Vegetation Status of Tirupati Urban, Chittoor District, A.P.



Sentinel 2A- Satellite FCC, April 2017

Vegetation Status of Vijayawada Urban, Krishna District, A.P.



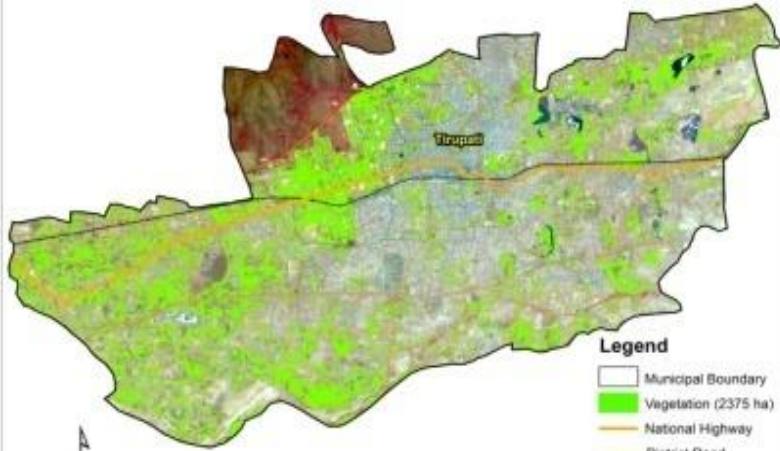
Sentinel 2A- Satellite FCC, March 2017



Classified image of the Urban area

Legend

- Municipal Boundary
- Vegetation (1203 ha)
- National Highway
- State Highway
- District Road
- Railway Line

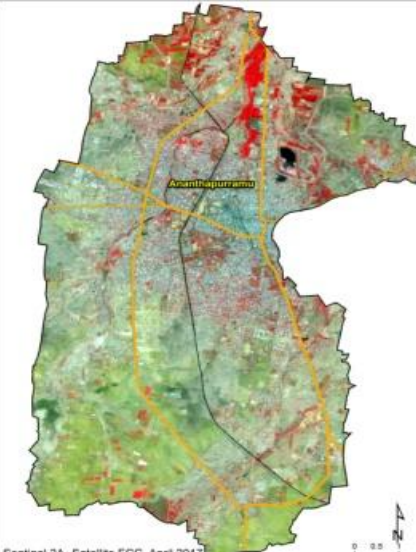


Classified image of the Urban area

Legend

- Municipal Boundary
- Vegetation (2375 ha)
- National Highway
- District Road
- Railway Line

Vegetation Status of Ananthapuramu Urban, Ananthapuramu District, A.P.



Sentinel 2A- Satellite FCC, April 2017



Classified image of the Urban area

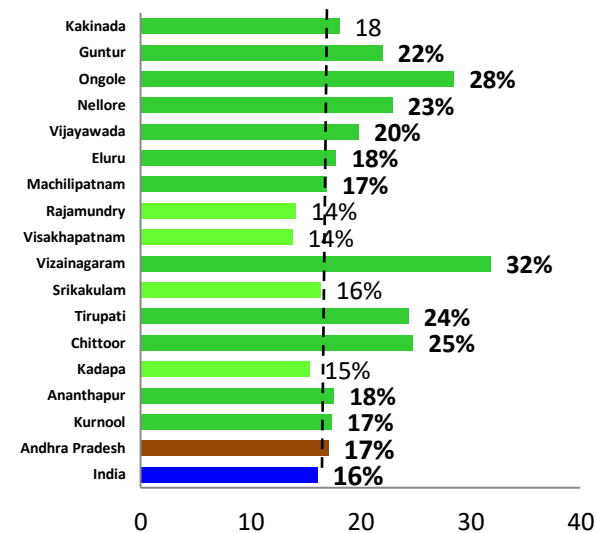
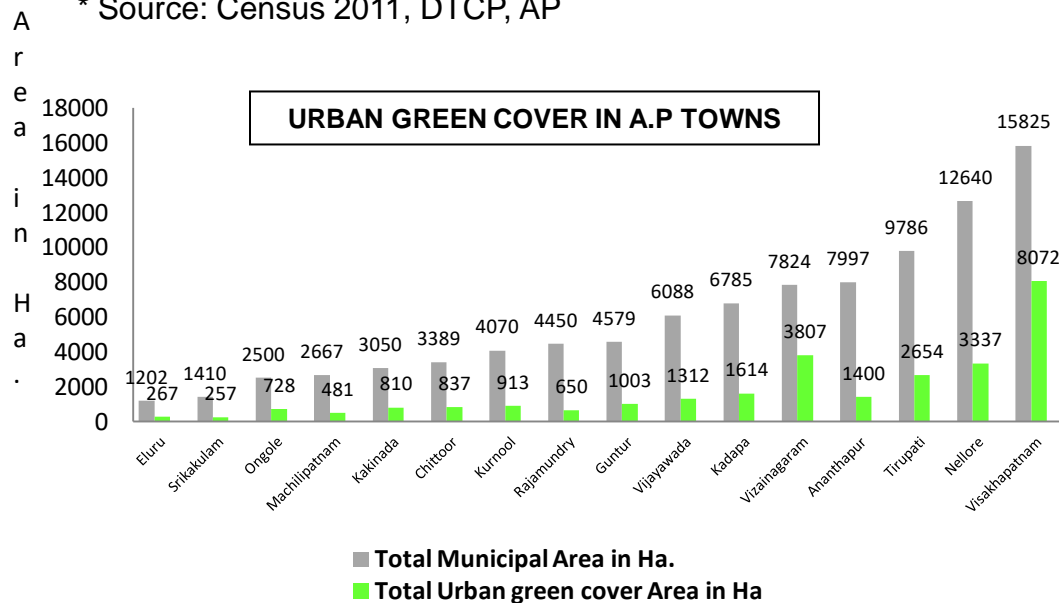
Legend

- Municipal Boundary
- Vegetation (1072 ha)
- National Highway
- State Highway
- District Road
- Railway Line

VEGETATION EXTENT IN ULBs

S.No.	Name of the Town	Name of the District	Town population in 2011*	Total Municipal Area in Ha.	Total Urban green cover Area in Ha.	Urban green cover without Hills in Ha.	% Green Cover	Per Capita Green Cover
1	Visakhapatnam	Visakhapatnam	2035922	15825	8072	2174	14	0.001
2	Rajamundry	East Godavari	376333	4450	650	625	14	0.002
3	Kadapa	Kadapa	344893	6785	1614	1035	15	0.003
4	Srikakulam	Srikakulam	137944	1410	257	230	16	0.002
5	Machilipatnam	Krishna	169892	2667	481	449	17	0.003
6	Kurnool	Kurnool	457633	4070	913	704	17	0.002
7	Ananthapur	Ananthapur	267161	7997	1400	1400	18	0.005
8	Eluru	West Godavari	218020	1202	267	213	18	0.002
9	Kakinada	East Godavari	312538	3050	810	557	18	0.003
10	Vijayawada	Krishna	1143232	6088	1312	1203	20	0.001
11	Guntur	Guntur	670073	4579	1003	1003	22	0.001
12	Nellore	Nellore	547621	12640	3337	2884	23	0.005
13	Tirupati	Chittoor	295323	9786	2654	2375	24	0.008
14	Chittoor	Chittoor	160722	3389	837	837	25	0.005
15	Ongole	Prakasam	208344	2500	728	710	28	0.003
16	Vizainagaram	Vizainagaram	228720	7824	3807	2484	32	0.011

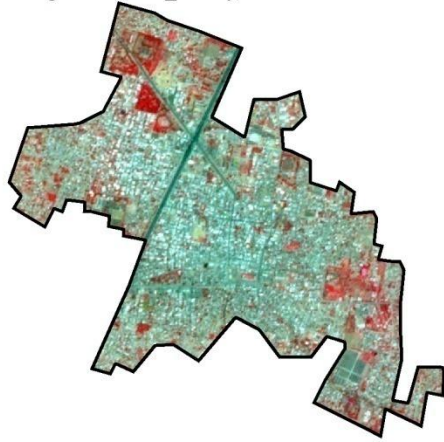
* Source: Census 2011, DTCP, AP



District wise percentage of Urban Green Cover

VEGETATION CHANGE ANALYSIS OF CHILAKALURIPET TOWN, GUNTUR DISTRICT

Satellite Image of LISS-IV_20May, 2007



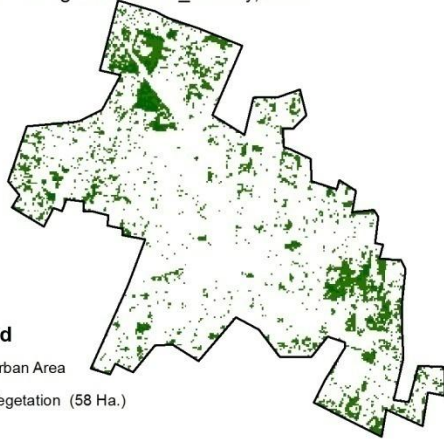
Satellite Image of LISS-IV_24 May, 2012



Satellite Image of Sentinel-2_11 April, 2017

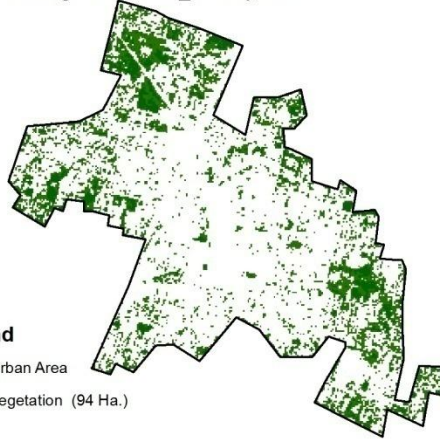


Classified Image of LISS-IV_20 May, 2007



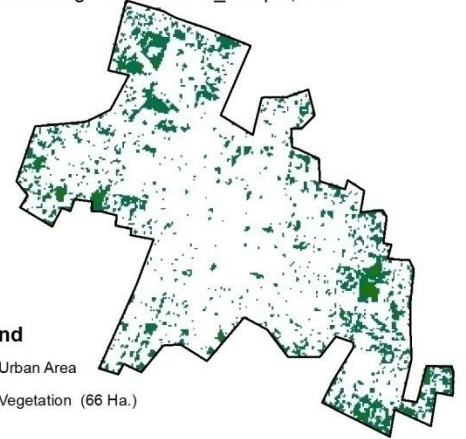
Legend
 □ Urban Area
 ■ Vegetation (58 Ha.)

Classified Image of LISS-IV_24 May, 2012



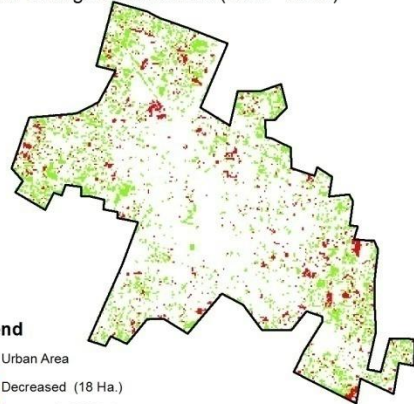
Legend
 □ Urban Area
 ■ Vegetation (94 Ha.)

Classified Image of Sentinel-2_11 April, 2017



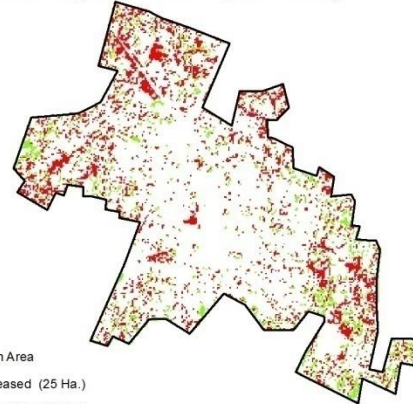
Legend
 □ Urban Area
 ■ Vegetation (66 Ha.)

Vegetation Change Occurrences (2007 - 2012)

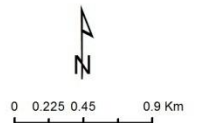


Legend
 □ Urban Area
 ■ Decreased (18 Ha.)
 ■ Increased (53 Ha.)

Vegetation Change Occurrences (2012 - 2017)

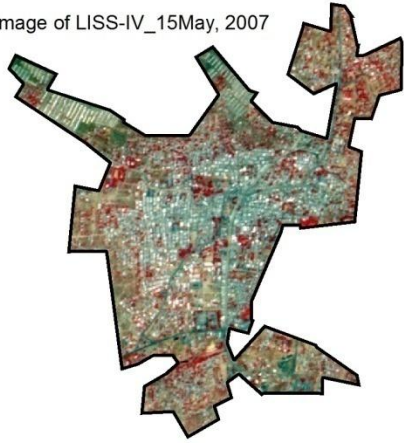


Legend
 □ Urban Area
 ■ Decreased (25 Ha.)
 ■ Increased (54 Ha.)

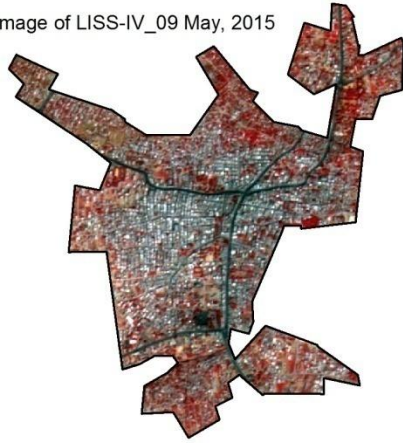


VEGETATION CHANGE ANALYSIS OF PULVINDULA TOWN, Y.S.R.KADAPA DISTRICT

Satellite Image of LISS-IV_15May, 2007



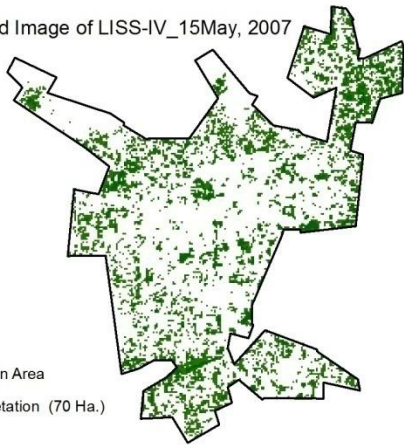
Satellite Image of LISS-IV_09 May, 2015



Satellite Image of Sentinel-2_04 April, 2017

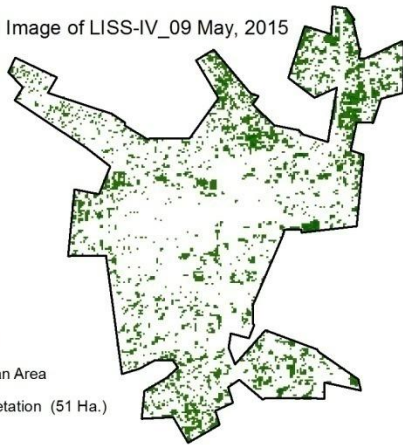


Classified Image of LISS-IV_15May, 2007



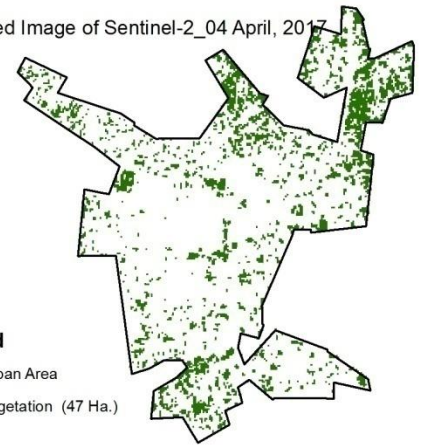
Legend
 □ Urban Area
 ■ Vegetation (70 Ha.)

Classified Image of LISS-IV_09 May, 2015



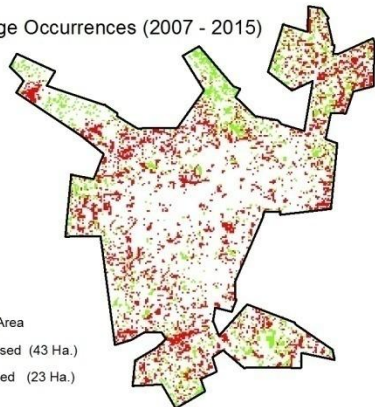
Legend
 □ Urban Area
 ■ Vegetation (51 Ha.)

Classified Image of Sentinel-2_04 April, 2017



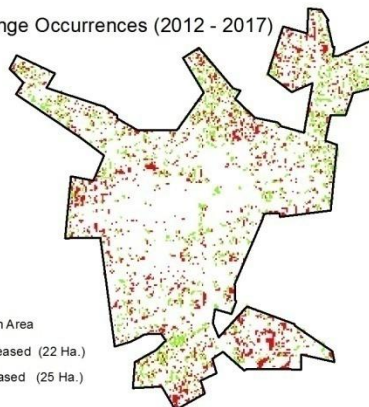
Legend
 □ Urban Area
 ■ Vegetation (47 Ha.)

Vegetation Change Occurrences (2007 - 2015)

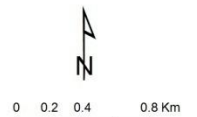


Legend
 □ Urban Area
 ■ Decreased (43 Ha.)
 ■ Increased (23 Ha.)

Vegetation Change Occurrences (2012 - 2017)



Legend
 □ Urban Area
 ■ Decreased (22 Ha.)
 ■ Increased (25 Ha.)



S.No.	Name of the Town	Name of the District	Total Green cover (Area in Ha.)			Change between 2007- 2012	Change between 2012- 2017
			Year 2007	Year 2012	Year 2017		
1	Chilakaluripet	Guntur	60	94	65	-34	29
2	Srikalahasthi	Chittoor	47	30	16	16	14
3	Rajampeta	Y.S.R.Kadapa	53	31	20	22	11
4	Pulivendula	Kadapa	70	51	47	20	4
5	Venkatagiri	S.P.S.Nellore	77	55	60	22	-5
6	Jammalamadugu	Kadapa	89	60	76	30	-16
7	Nandyal	Kurnool	151	95	114	56	-19