



**Geospatial Caravan
MGNREGS
Rural Development**

**ANDHRA PRADESH
6th September 2019**

GIS Based Integrated Planning

- 8 GIS Facility Centres established at Anantapuram, Chittoor, Kurnool, Kadapa, Prakasham, Srikakulam, Vizianagaram, Visakhapatnam and at state office – Vijayawada.
- The 8 GIS centres infrastructure and training provided by the RD Department & GIZ, Delhi.
- With technical support from GIS Facility Centres and by using Google Earth PRO, Global mapper, Activity planning maps are being prepared by using 18 thematic maps

GIS Based Integrated Planning

GIS use was done at two levels:

- Special Web – GIS through integrated thematic maps with support of AP Space Application Centre for Mission Water Conservation blocks.
- Use of thematic layers available on Bhuvan State Portal.
- The entire process for downloading and preparing GP Plans are done as per online e-SAKSHAM module.
- GIS Portal developed under NREGS Website for monitoring purpose -

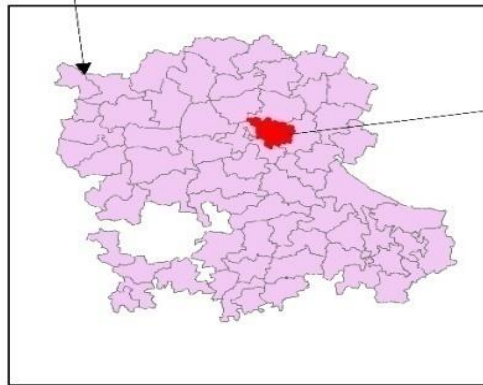
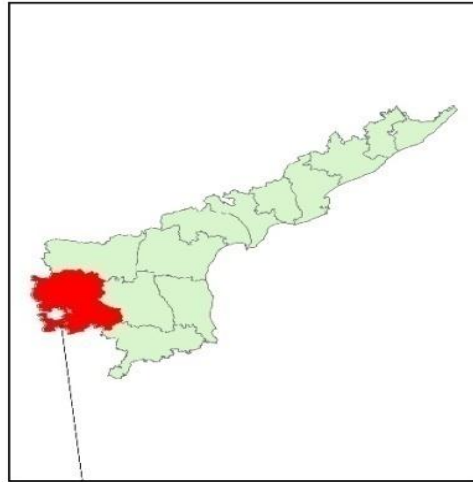
<http://www.nrega.ap.gov.in/Nregs/GISPortal.do>

GIS BASED INTEGRATED DPR

**Danduvaripalli GP,
Bukkarayasamudram Block,
Anantapuramu District
Andhra Pradesh**

Plan of Danduvaripalli GP, Bukkarayasamudram Mandal, Anantapuramu District

LOCATION MAP OF DANDUVARIPALLI GP BUKKARAYASAMUDRAM MANDAL
Anantapuramu District



Plan of Danduvaripalli GP, Bukkarayasamudram Mandal, Anantapuramu District

Grama Panchayat

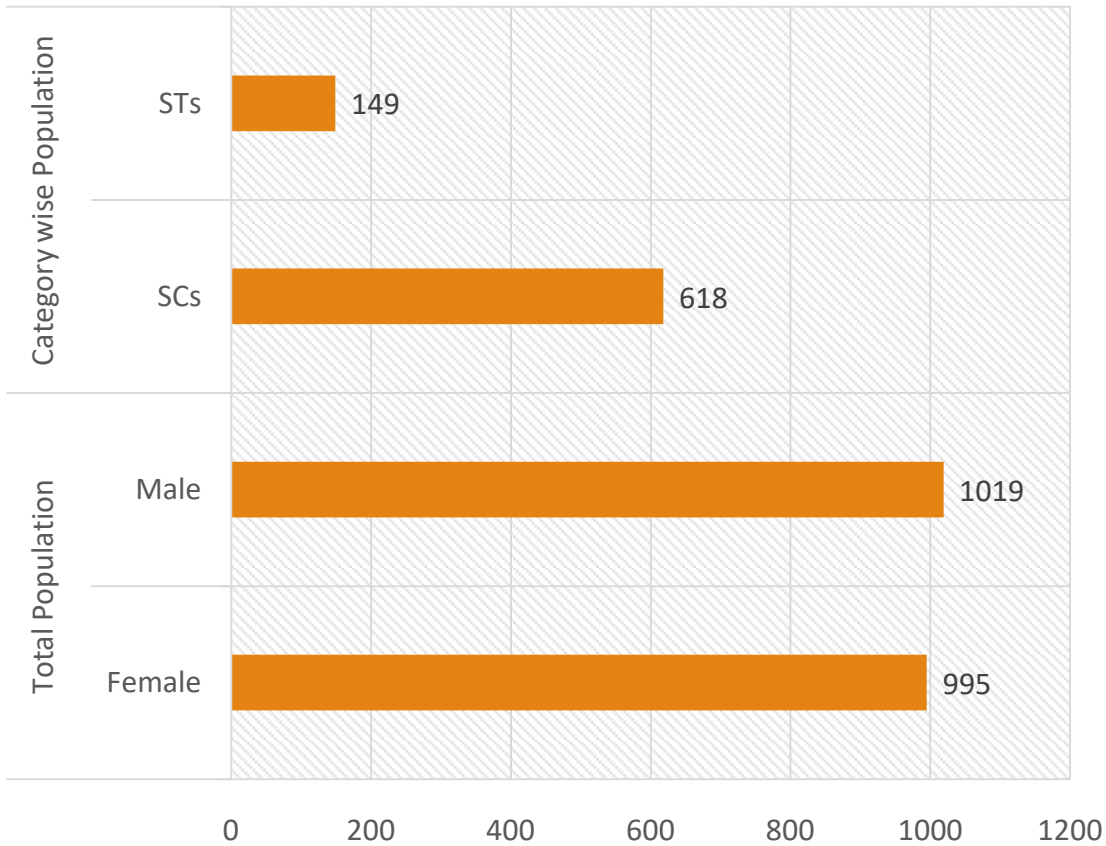
Rs. 11,281 GP Average per HH exp

Rs 182 lakhs Projected Estimated Cost

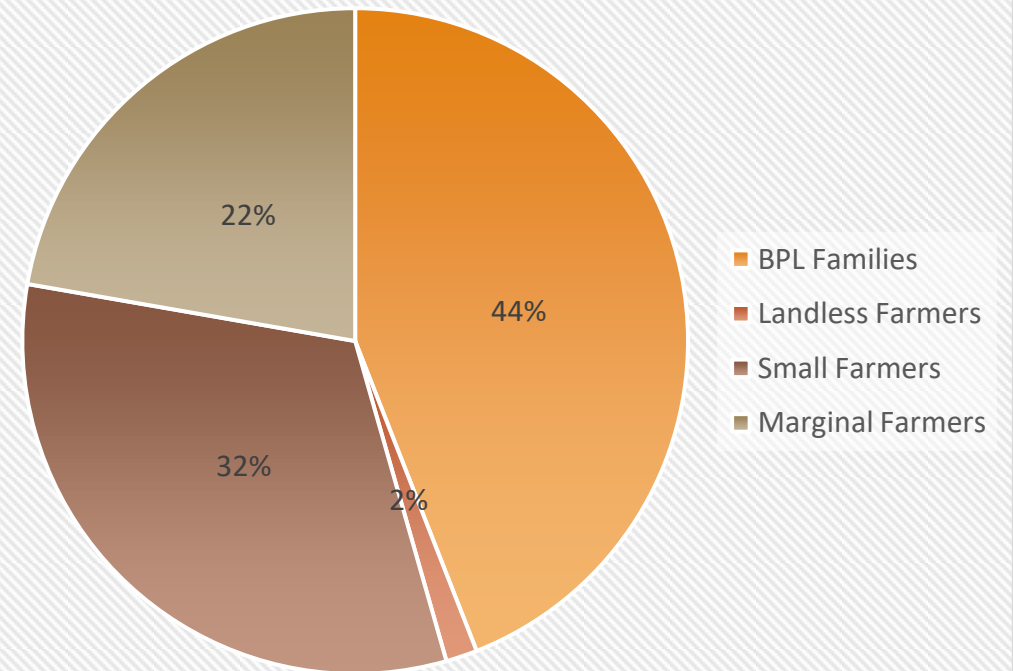
Avg. Exp. in Last 3 Years : = Rs. 45.08 Lakh 

GIS BASED INTEGRATED PLAN : Dhanduvaripalli GP, Anantapuram district GP Profile

Total Population & SC & ST population



Vulnerability parameters

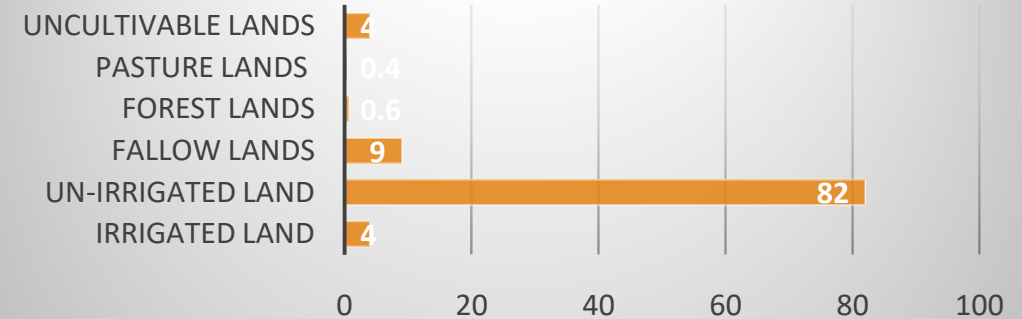


GIS BASED INTEGRATED PLAN :

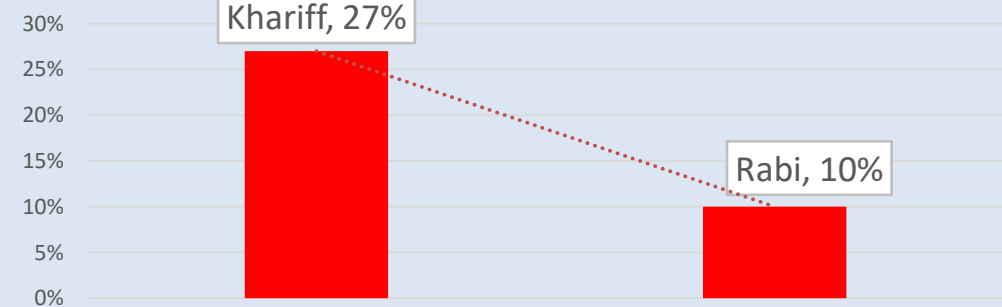
Dhanduvaripalli GP, Anantapuram district GP Profile

- Average Rainfall : 504mm
- Geographical Area : 2254 ha
- Status of Ground Water : **Over Exploited**
- Small & Marginal Farmers : 714
- **Percentage area under Irrigation**
 - Tanks : 3 %
 - Bore well : 5 %
- **Animal Wealth (no) : 8882**
 - Cattle & Buffaloes : **15 %**
 - Small Ruminants: **62 %**
 - Poultry: **22 %**
- Runoff potential for harvesting: **51 Ha.M**

Percentage of Land Type

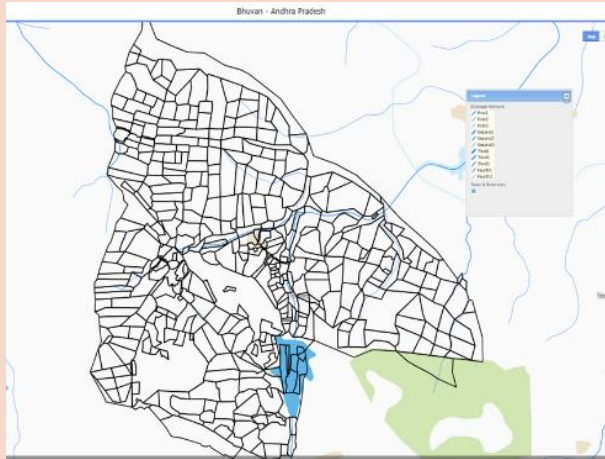


Actual Cropped Area for 2017-18

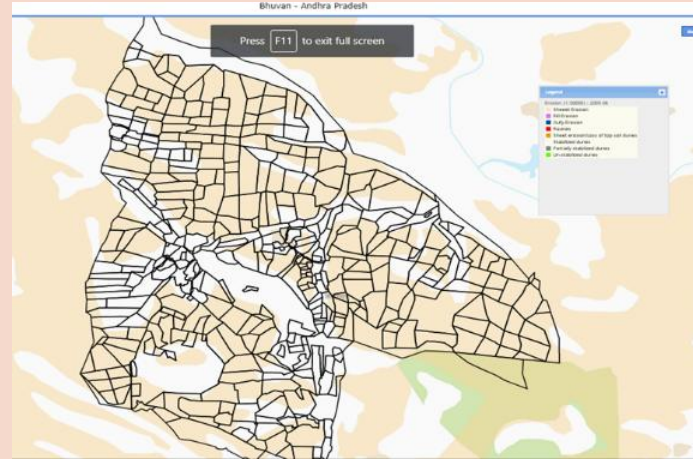


GIS BASED INTEGRATED PLAN : GIS Profile

Drainage Line Map



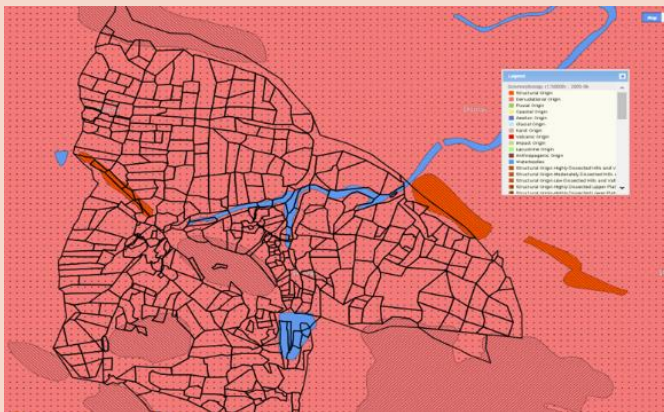
Soil Erosion Map



Land Use Land Cover



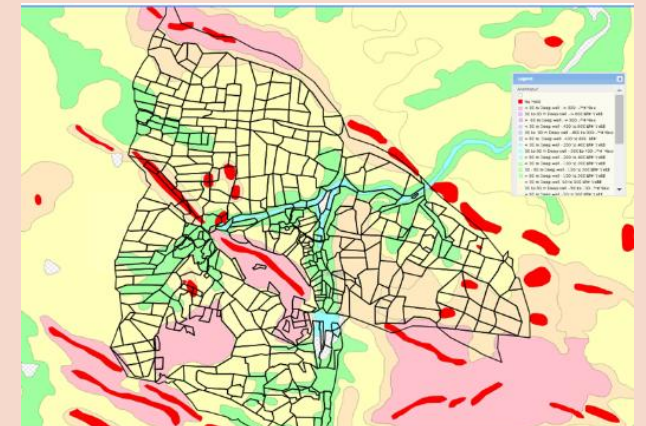
Geomorphology Map



Lineament Map



Ground Water Perspective



GIS BASED INTEGRATED PLAN :

Dhanduvaripalli GP, Anantapuram district GIS Profile

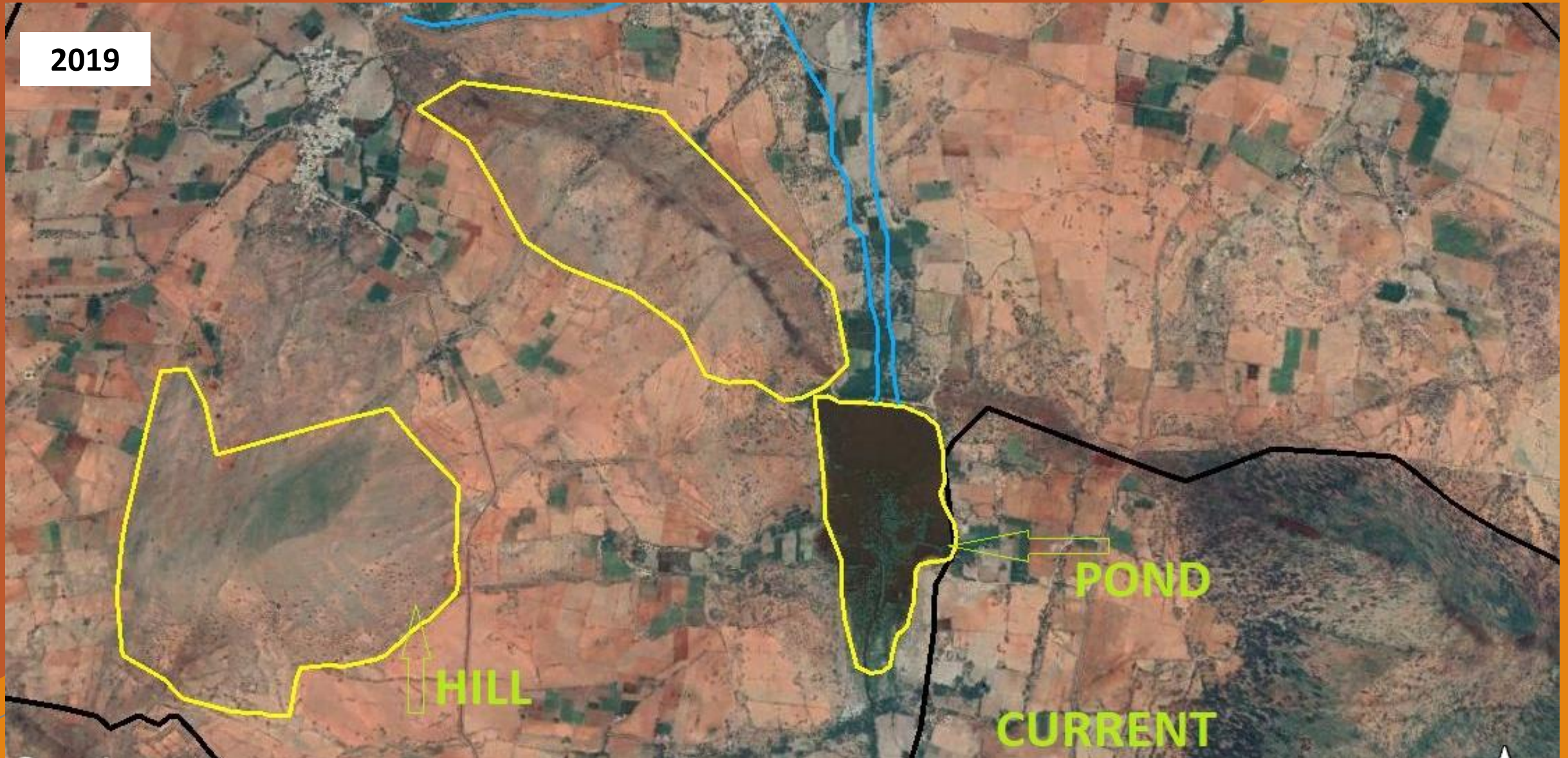
S NO	Key Thematic Layer	Key Inferences
1	Drainage Lines	<ul style="list-style-type: none">• Four First order drains• Two Second order drains• One third order drain
2	Erosion Map	<ul style="list-style-type: none">• 90% of area under sheet erosion
3	Geomorphology & salt affected	Lands around drainage lines are salt affected
4	Liniment	Liniments passing through hillocks
5	Ground water perspective	Moderate and low ground water potential
6	Waste lands	Forests foot hills are degraded
7	Land Use Land Cover	Significant area under Revenue Hillocks are degraded

Plan of Danduvaripalli GP, Bukkarayasamudram Mandal, Anantapuramu District



Plan of Danduvaripalli GP, Bukkarayasamudram Mandal, Anantapuramu District

2019



Illustrative Pictures



Major Work Identified

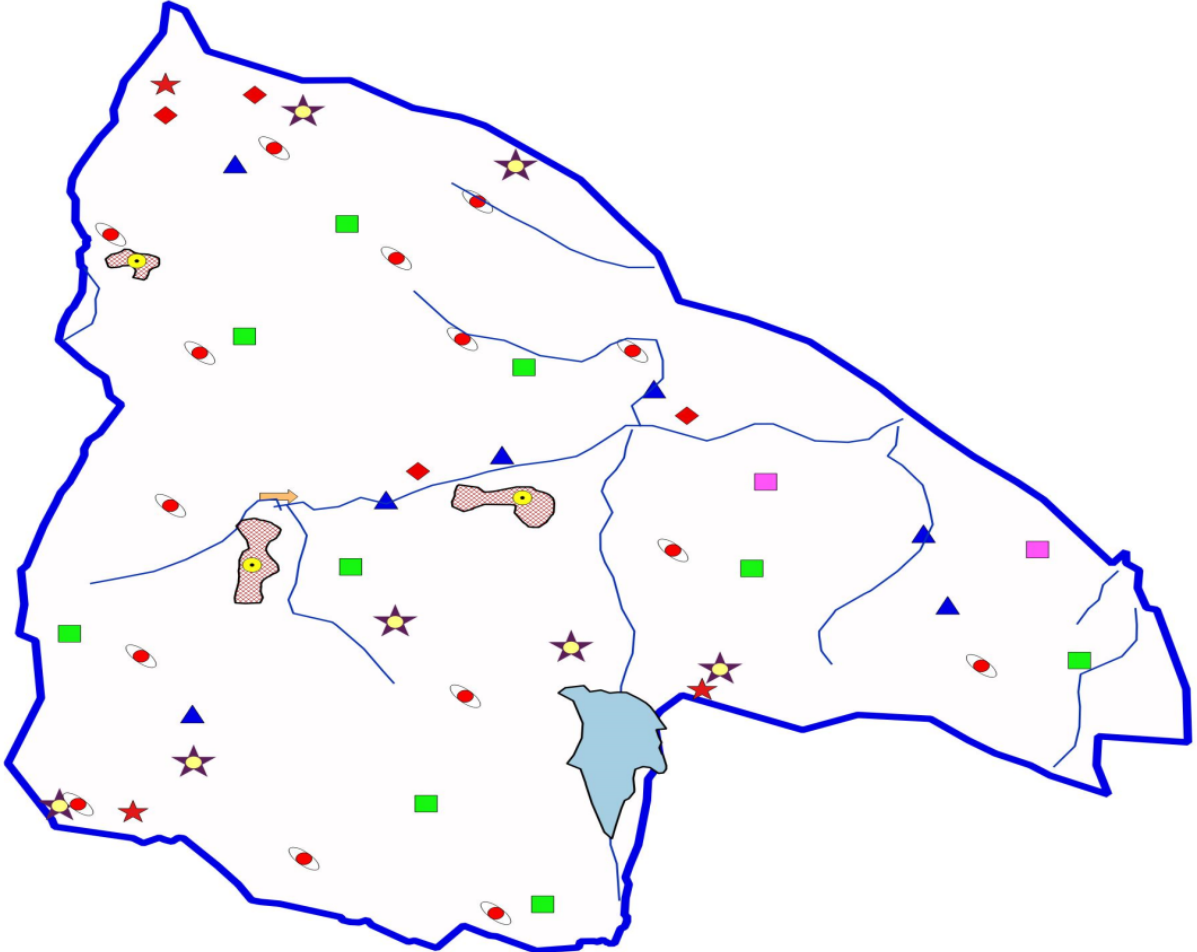
Total No. of Works : 111

Estimated Cost : Rs. 1.82 Crs

NO. OF WORKS	NRM WORKS
2	MINOR IRRIGATION RESTORATION PROJECT
31	FARM POND
17	BOUNDARY TRENCH
7	CHECK DAM Works
4	DUGOUT POND
7	WATER ABSORPTION TRENCHS
3	STAGGERED TRENCHS
4	OTHER WROKS
	NON- NRM WORKS
12	SOAK PITS
2	BURIAL GROUND
5	HOUSING
5	MINI GOKULAM
6	SERICULTURE
6	TRESHING FLOOR

Proposed Plan for Danduvari Palli Gram Panchayat

MGNREGS-AP
DHANDUVARIPALLI GP ACTIVITY PLAN FOR NRM WORKS



Legend

ADMINISTRATIVE

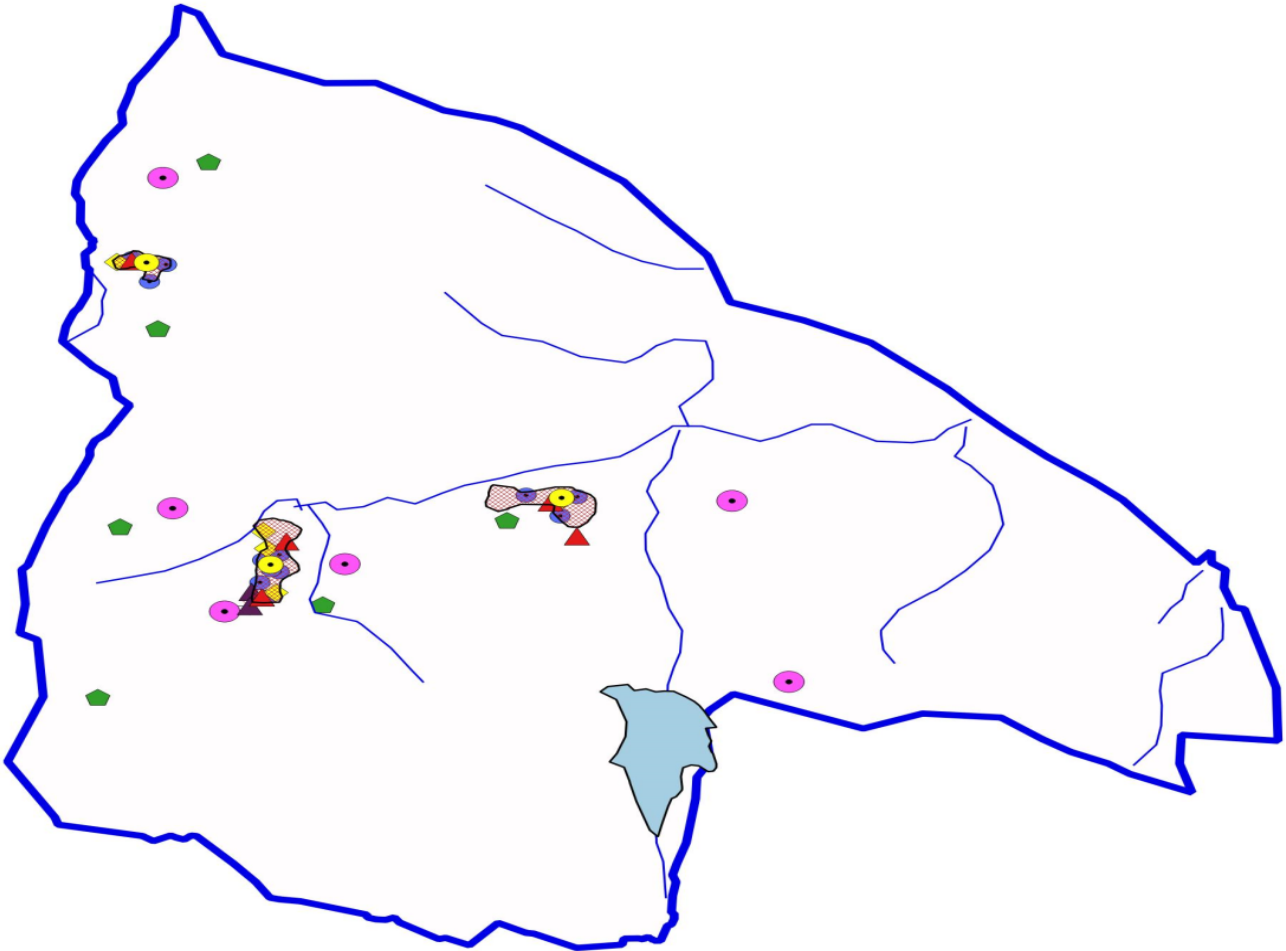
- HABITATION
- SETTLEMENT
- MI TANK
- DRAINAGE 2 ORDER STREAM

WORKS

- SILT APPLICATION
- DUGOUT PONDS
- FEEDER CHANNEL
- MI TANK PERIPHERALI TRENCH
- BOUNDARY TRENCH
- FARM POND
- STAGGERED TRENCHES
- SURFACE STORAGE POND
- REPAIRS TO CD'S
- WATER ABSORPTION TRENCHES
- BOUNDARY

Proposed Plan for Danduvari Palli Gram Panchayat

MGNREGS-AP
DHANDUVARIPALLI GP ACTIVITY PLAN FOR NON-NRM WORKS



Legend

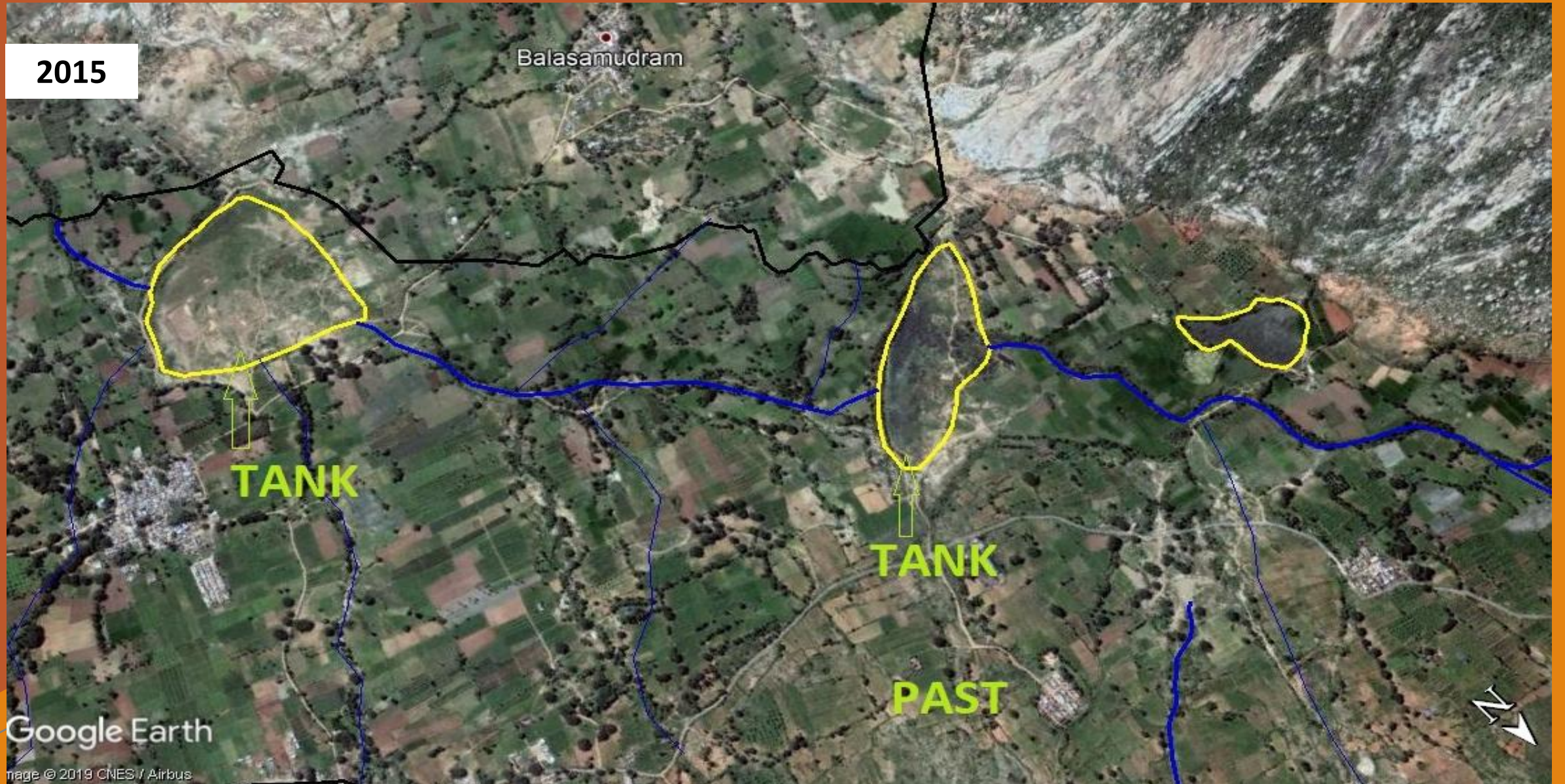
ADMINISTRATIVE

- HABITATION
- ▨ SETTLEMENT
- MI TANK
- DRAINAGE NETWORK

WORKS

- ▲ Housing
- ▲ BURIAL GROUND
- ◆ Mini Gokulam
- ◆ Sericulture
- Soak Pits
- Treshing Floor
- * SWPC
- ▭ BOUNDARY

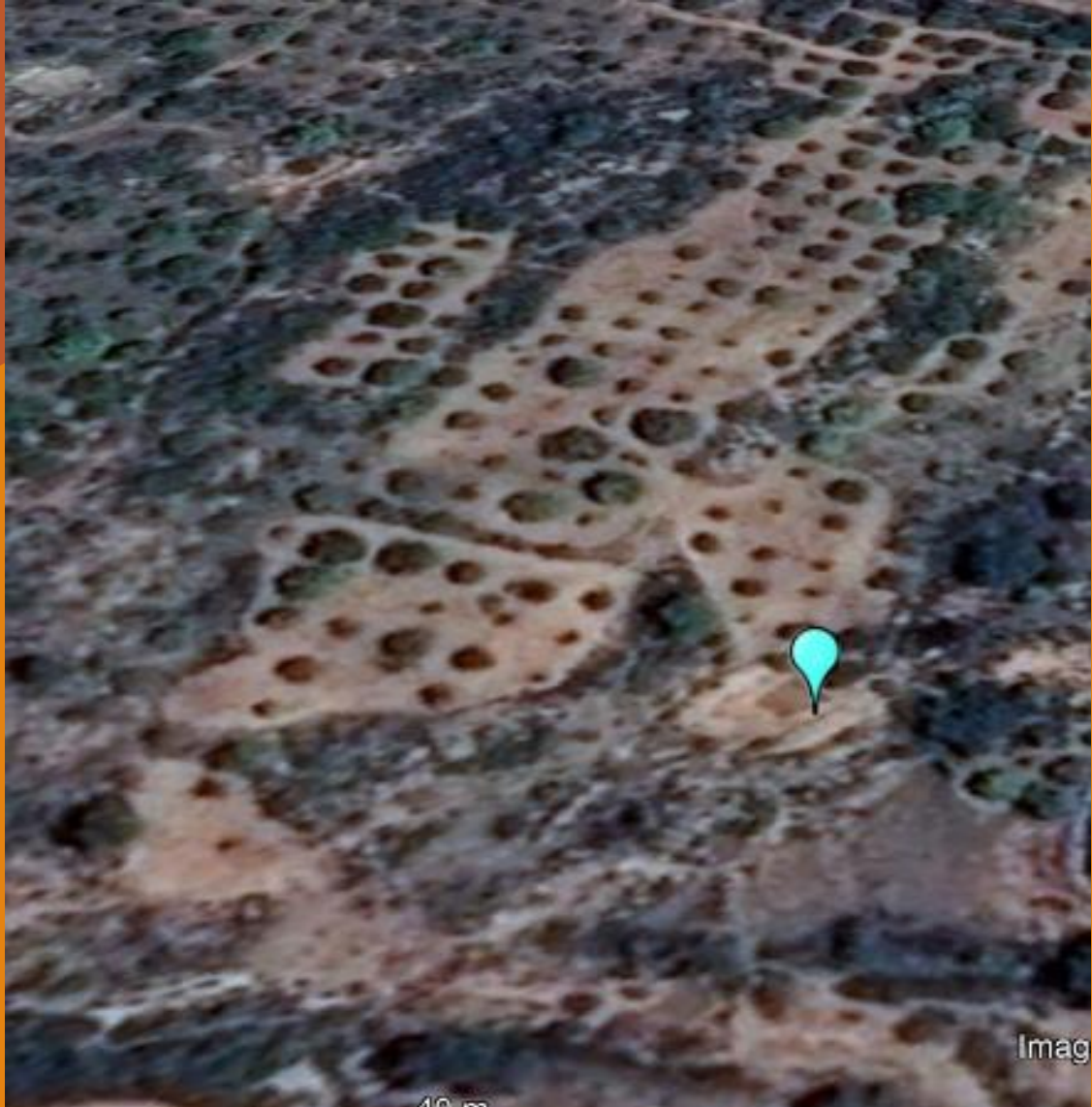
Plan of R.Nadimpalle GP, Ramamudram Mandal Chittoor District



Plan of R.Nadimpalle GP, Ramasamudram Mandal Chittoor District



Illustrative Pictures



THANK YOU